

全地面起重机 / All Terrain Crane

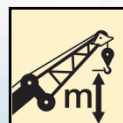
QAY200



200t



61m



96m

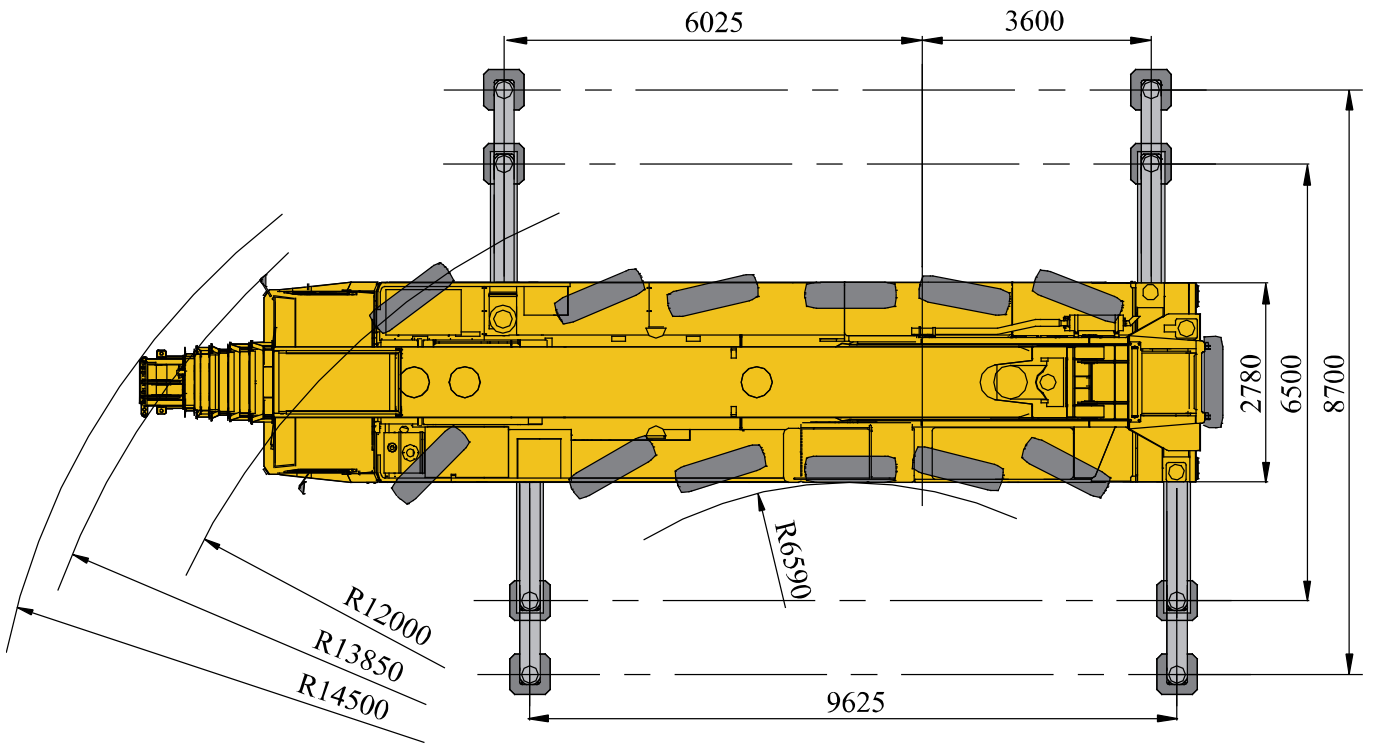
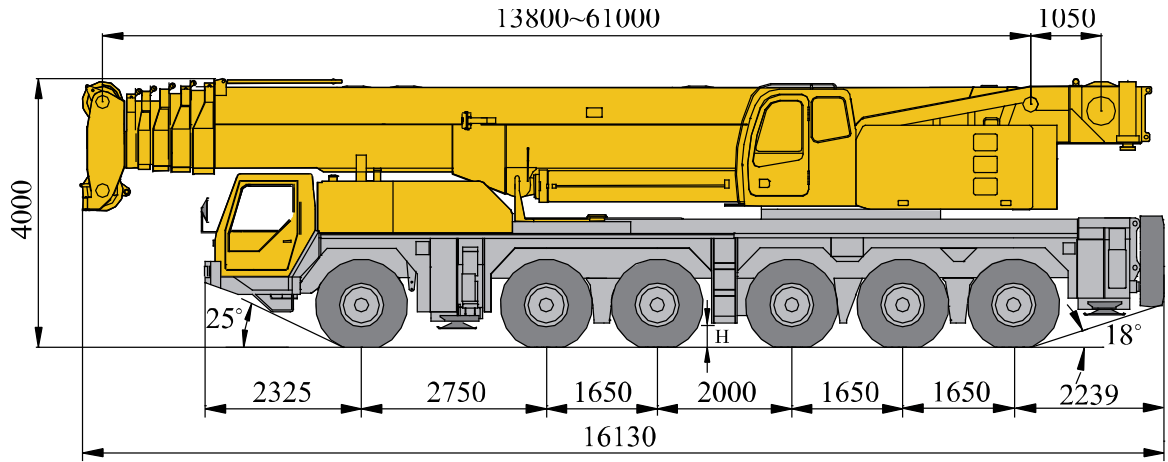


目录

Content

目录	
Content	
尺寸参数	3
Dimensions	
技术规格	4-7
Technical Specifications	
重量/作业速度	8
Weight / Working speeds	
平衡重	9
Counterweight	
臂架组合方案	10-11
Boom / Jib combinations	
主臂	12-17
Boom	
副臂	18-22
Jib	
独立臂头	23-25
Independent jib	
符号标识	26
Description of symbols	
注意事项	27
Notes	

尺寸参数 Dimensions



385/95 R 25
(14.00 R 25)

H

278mm

技术规格

Technical specifications



底盘

车架	徐工设计、制造，全覆盖式走台板，防扭转箱型结构，高强度钢材制造。
支腿	4支腿，H形布置，采用双级水平支腿，水平伸缩和垂直伸缩由液压控制，底盘两侧装有电控操纵控制台，控制台板装有水平仪、照明灯和增速按钮，支腿油缸均设有单向阀，且垂直支腿带有双向液压锁。
发动机	OM502LA.III/3，V形八缸水冷电喷柴油发动机，戴姆勒制造，额定功率390kW/1800rpm，最大扭矩2400Nm/1200rpm，国III排放标准。 燃油箱容积：400L。
液压系统	变量泵通过取力器联接至变速箱，用于控制支腿、电比例转向和悬挂动作。
变速箱	德国ZF手、自一体电控变速箱，16个前进档，2个倒档，带缓速制动。
分动箱	德国KESSLER机械式分动箱，装有应急转向油泵。
车桥	德国KESSLER高强度车桥，配备气控鼓式制动器。
悬挂	所有车桥均采用油气悬挂系统，减震效果好，具有自动调平、悬架升降、弹性刚性转换等功能。
轮胎	12个轮胎，1个备胎，每桥均装单胎，米其林制造，承载力大。 轮胎规格：385/95R25（14.00R25）
转向	机械加液压助力转向，通过液压切换系统，提升3轴和4轴后实现蟹形模式行驶，适应多种行驶工况需求。
制动	行车制动：双回路气压制动，作用于所有车轮。

驻车制动：弹簧储能制动，作用于2-6轴车轮。

辅助制动：发动机排气制动和缓速制动，安全可靠，延长制动摩擦片使用寿命。

驾驶室

新型钢结构豪华全宽驾驶室，采用悬浮式连接结构，后部装有减震器。主驾采用高档气悬浮座椅，可自动调节高度。副驾采用双座椅，可展开为简易卧铺，便于驾驶员临时休息。配备电动升降器的安全玻璃，电动加热、电动调节后视镜，可调节高度及角度方向盘。组合式中控台布局安全合理，采用圆弧造型，体现人性化的设计。标配CD、冷暖空调。

电气系统 直流24伏特，2个的电池组串联。



上车

结构	徐工设计、制造，高强度钢材制造。
上车发动机	TAD720VE，直列六缸水冷电控柴油发动机，沃尔沃制造，额定功率162kW/2100rpm，最大扭矩854Nm/1400rpm，国II排放标准。 燃油箱容积：300L。
液压系统	上车发动机驱动变量泵，用于起升、变幅、伸缩，驱动闭式泵用于回转。采用专用大通径多路阀，与变量柱塞泵进行良好的匹配，启停平稳，风冷式液压油冷却器，有效降低系统油温。
操纵方式	先导电比例操纵，无级调速，由左右2个操纵手柄控制起重机的全部动作。
主起升机构	双折线绳槽卷筒，由液压马达驱动，内置行星齿轮减速器和常闭式制动器，

技术规格

Technical specifications

并带有平衡阀。

进口钢丝绳，钢丝绳端带绳头，直接安装于索套内，提高了更换速度，方便快捷。

回转机构 三排滚柱外齿式回转支承，双回转机构，液压马达驱动，内置行星齿轮减速器和回转制动器。具有动力控制或自由滑转的功能，可无级调速。

操纵室 带大圆弧玻璃，外开式门，可调式座椅，可翻仰20°，装有安全玻璃和顶部保护栏，配备力矩限制器、电控箱、风扇、电动前窗刮水器、发动机动力加速踏板、发动机起动开关、前窗遮阳帘等。
标配冷暖空调。

安全装置 液压平衡阀、液压溢流阀、液压双向锁、力矩限制器；三圈保护器，防止钢丝绳过放；臂头设置高度限位，防止钢丝绳过卷；风速仪，检测高空风速。

力矩限制器 当实际力矩接近过载时，发出听视觉警报，并在过载之前自动停止危险动作。具有超载记忆功能（黑匣子）和故障自诊断功能。

组合配重 总重65t，有0t、22t、32t、42t和65t五种组合方式。

电气系统 直流24伏特，2个电池串联。



臂架系统

主臂 6节，“U”形截面的筒形焊接结构。单缸插销伸缩机构，1个装有安全阀的双作用的伸缩油缸，控制每节臂的伸缩，多种伸缩模式可供选择。

主臂长度：13.8m~61m。

副臂 2节，桁架式和箱型焊接结构，有0°、15°和30°三种固定副臂安装角。
副臂长度：11.55m~20m。

臂端单滑轮 单滑轮，安装在主臂顶端用于单股钢丝绳起重作业。臂端单滑轮的起重性能同11.55m副臂0°安装角的起重性能。

选装配置

上车发动机 BF6M1013ECP，直列六缸水冷机械柴油发动机，道依茨（大连）制造，额定功率173kW/2100rpm，最大扭矩906Nm/1400rpm，国II排放标准。

副臂加长节 2节，桁架式焊接结构，副臂长度可增加至28m、36m。

副起升机构 双折线绳槽卷筒，由液压马达驱动，内置行星齿轮减速器和常闭式制动器，并带有平衡阀。

轮胎 12个轮胎，1个备胎，每桥均装单胎，双钱制造，承载力大。
轮胎规格：385/95R25（14.00R25）

吊钩 200t吊钩，最大倍率16，自重2400kg，双钩。

产品各部件明细如上所述，具体部件明细请参照产品报价单

技术规格

Technical specifications



Chassis

Frame	Designed and manufactured by XCMG, with all covered walking surface, anti-torsion box structure and optimal load-bearing structure design, made of imported high strength steel.
Outrigger	4 outriggers, H-shaped arrangement, lateral and vertical outrigger controlled by the hydraulic control. Both sides of the chassis equipped with electronic control console, the console installed with luminous level, lighting and speed buttons; outrigger cylinders equipped with one-way valve, and the vertical outrigger has two-way hydraulic lock.
Engine	OM502LA .III/3, V-shaped eight-cylinder water-cooled EFI diesel engine, manufactured by Daimler, rated power 390kW /1800rpm, max. torque 2400Nm / 1200rpm, the national III emission standards. Fuel tank capacity : 400L
Hydraulic system	The variable pump is connected to the transmission through PTO for controlling the movements of outriggers, steering and suspension.
Gearbox	Mechanical transmission imported from ZF Germany, with manual MT and auto-matic AT control, equipped with retarded brake, with 16 forward gears and 2 reverse gears available.
Transfercase	Mechanical transfer box is originally imported from KESSLER Germany, equipped with an emergency steering oil pump.
Axles	High strength axle with reliable performance, imported originally from KESSLER Germany, equipped with pneumatically controlled drum brake.
Suspension	Hydro-pneumatic suspension is adopted for all axles, providing good shock absorbing effect. Functions of automatic leveling, suspension lifting, elastic/rigid state switch-over, etc. are available.
Tires	12 tires and 1 spare tire, Each axle is equipped with single tire, manufactured by Michelin, large bearing capacity. Tire specifications: 385/95R25 (14.00R25)
Steering	Mechanical and hydraulic powered steering is adopted, which can lift axles 3 and 4 by hydraulic selector system to realize the crabbing mode.
Brakes	Service brake: double-circuit air pressure brake, acting on all wheels. Parking brake: spring energy brake, acting on

Brakes

wheels of 2-6 axles.

Auxiliary brake: engine retarded brake, engine exhaust brake, transmission retarded brake, safe and reliable, which prolongs the service life of brake and friction disc.

Driver's cab

New type steel structure full dimension cab with suspension connecting structure and there is shock absorb fitted at the rear of the cab. An air-floating seat designed for the driver is automatically adjustable in height. A double-seat designed for the co-driver may be used as a berth for rest. Safety glass is heat proof and electrically operated door window lift is equipped. Electric-heating and adjusted mirrors make operation convenient and safe. Steering wheel adjustable in height and angle is suitable for operators with various heights. Combined control panel arranged safely, reasonably and ergonomically presents humanized design concept. CD player, heater and air conditioner are standard.

Electrical System

DC 24 volts is in series with two 12-volt battery packs.



Superstructure

Frame

Designed and manufactured by XCMG; Full-covered walking platform, made of high-strength steel

Superstructure Engine

TAD720VE, inline six-cylinder water-cooled EFI diesel engine, manufactured by Volvo, rated power 162kW / 2100rpm, max. torque of 854Nm / 1400rpm, state II emission standards. Fuel tank capacity : 320L.

Hydraulic system

Variable pump driven by superstructure engine, used for hoisting, elevating, telescoping and slewing operation. Imported electro-hydraulic direction valve, matching perfectly stably. Air-cooled hydraulic oil cooler, which may effectively reduce the temperature of oil in the system, suction filter and return filter.

Operating mode

The electric-proportional pilot control and PLC integrated intelligent control technology are adopted in the system. A control network between superstructure and carrier are formed through electric brush, all movements of the crane may be realized smoothly and flexibly after combined with normal electric system.

Main winch system

Hydraulic controlled speed regulation, with groove drum equipped, driven by hydraulic variable motor through planetary gear reducer

技术规格

Technical specifications

	and with built-in constant closed brake and balance valve fitted. Imported wire rope is equipped. Imported pouch socket makes reeving easy and fast. It has features of high speed with light load and low speed with heavy load.
Slewing system	3-row roller type external gearing slewing ring, with symmetrically arranged double slewing mechanism. Hydraulic motor drives planetary gear reducer to drive, for 360° continuous rotation. Power control and free slewing function as well as stepless speed regulation are available.
Operator's cab	Large arc glass, outward opening door, adjustable seat with 20° tilting are adopted. Safety glass and top protective rails, LMI, controller box, electric fan, electric windshield wipers, engine accelerator pedal, engine start switch and windshield visor, etc. are also available.
Safety devices	Hydraulic counterbalance valve, Hydraulic relief valve, Hydraulic double-way valve, LMI, Lowering limiter avoids wire rope over-releasing; Anti-two block at boom head avoids wire rope over-winding; Anemometer: check whether aerial wind velocity is in safe working range.
LMI	The safety protection device is installed in operator's cab. When actual moment approaches overload value, it may send out visual alarm, and automatically stop dangerous movements before overloading. Overload memory function (black box) and fault self-diagnosis function are available.
Combined counterweight	Total weight is 65t. 5 counterweight combinations of 0t, 22t, 32t, 42t and 65t are available.
Electrical System	DC 24 volts is in series with two 12-volt battery packs.



Boom system

Boom	6-section, U-shape cross section, welding structure. Single-cylinder pinning interlocked telescoping system. One double-acting cylinder with safe valve assemblies used for control of the telescoping movement of all boom sections, realizing various boom length combinations. Various telescoping pattern are available. Boom length:13.8m~ 61m.
-------------	---

Jib	2-section, lattice and box welding structure, with 0° , 15° and 30° jib offset angles available. Jib length:11.55m~ 20m.
Single top	Single pulley, Fitted at boom head, used for single line operation. Its lifting performance is the same as that for 11.55 jib with 0° offset angle.

Additional equipment

Superstructure Engine	BF6M1013ECP, inline six-cylinder water-cooled mechanical diesel engine, manufactured by DEUTZ(Dalian), rated power 173kW / 2100rpm, max. torque 906Nm / 1400rpm, state II emission standards.
Extension jib	2-section, lattice welding structure, combined jib length can reach 28m, 36m.
Auxiliary winch system	Hydraulic controlled speed regulation, with groove drum equipped, driven by hydraulic variable motor through planetary gear reducer, and with built-in constant closed brake and balance valve fitted.
Tires	12 tires and 1 spare tire, each axle is equipped with single tire, manufactured by Double coin, large bearing capacity. Tire specifications: 385/95R25 (14.00R25)
Hook	200t hook block; the maximum parts of line are 16 and the hook dead weight is 2400kg; double hook.

Product parts details As mentioned above, please refer to the product quotation for specific parts.

重量 Weight





车桥 Axle	1	2	3	4	5	6	总重量 Total weight
t	11.75	11.75	11.85	11.85	11.9	11.9	71








吊钩 Hook	倍率 No. of lines	吊钩重量 Weight kg	备注 Remarks
130t	12	1600	双钩 Double hook
65t	6	1000	单钩 Single hook
30t	3	500	单钩 Single hook

作业速度 Working speeds

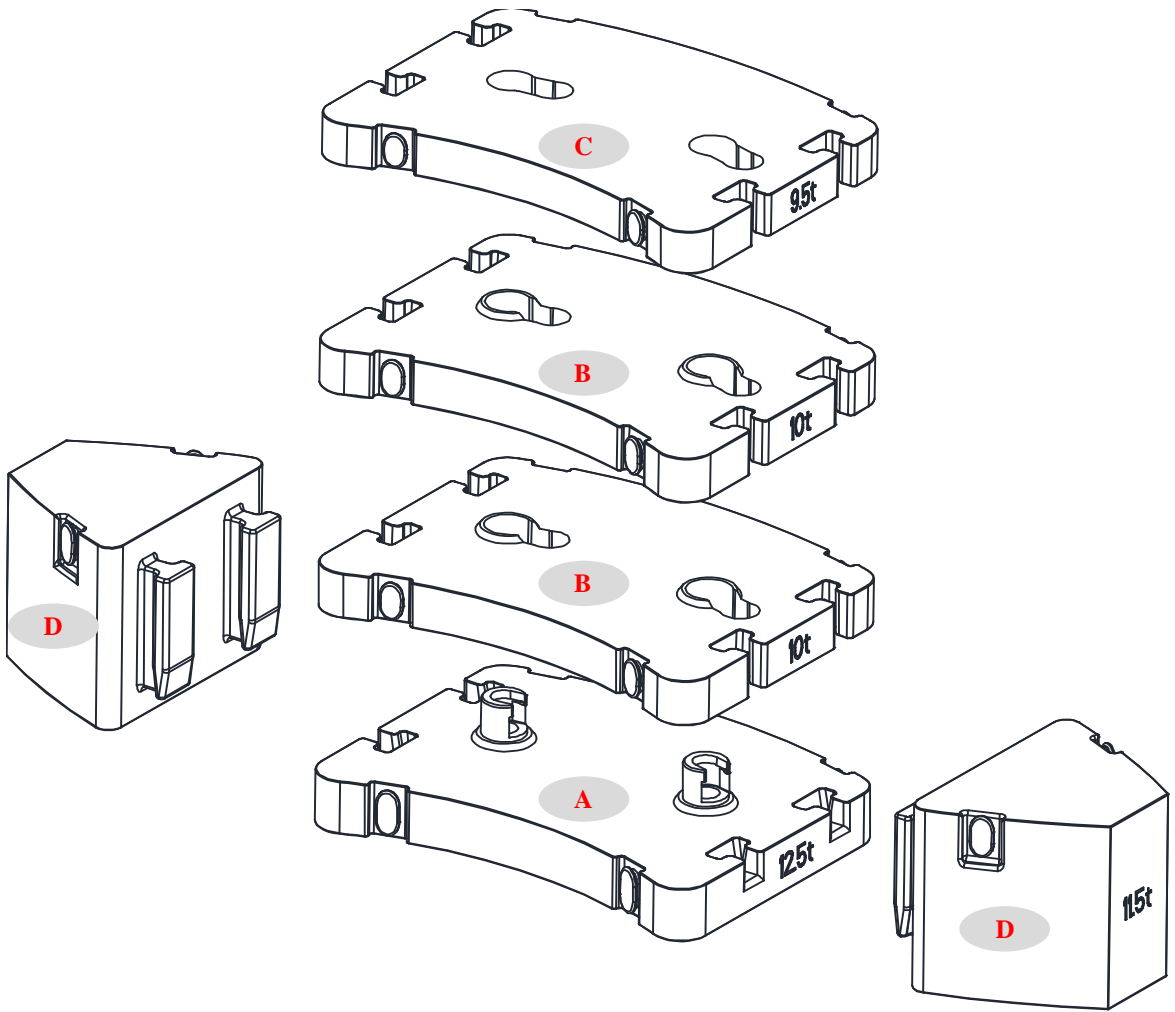


		
385/95 R 25 (14.00 R 25)	2.1 ~ 71	48%



作业机构 Drive	作业速度 Working speed	最大单绳拉力 Max. single line pull	钢丝绳直径/长度 Rope diameter/ length
	0-120 m/min, 单绳, 第四层 m/min, single line, 4th layer	148 kN	26 mm/280 m
	0-110 m/min, 单绳, 第四层 m/min, single line, 4th layer	122 kN	26 mm/210 m
	0-1.9 r/min		
	从-1°抬起至82°约60s Approx. 60s for boom elevation from -1° to 82°		
	从13.8m伸出至61m约550s Approx. 550s for boom extension from 13.8m to 61m		

平衡重 Counterweight

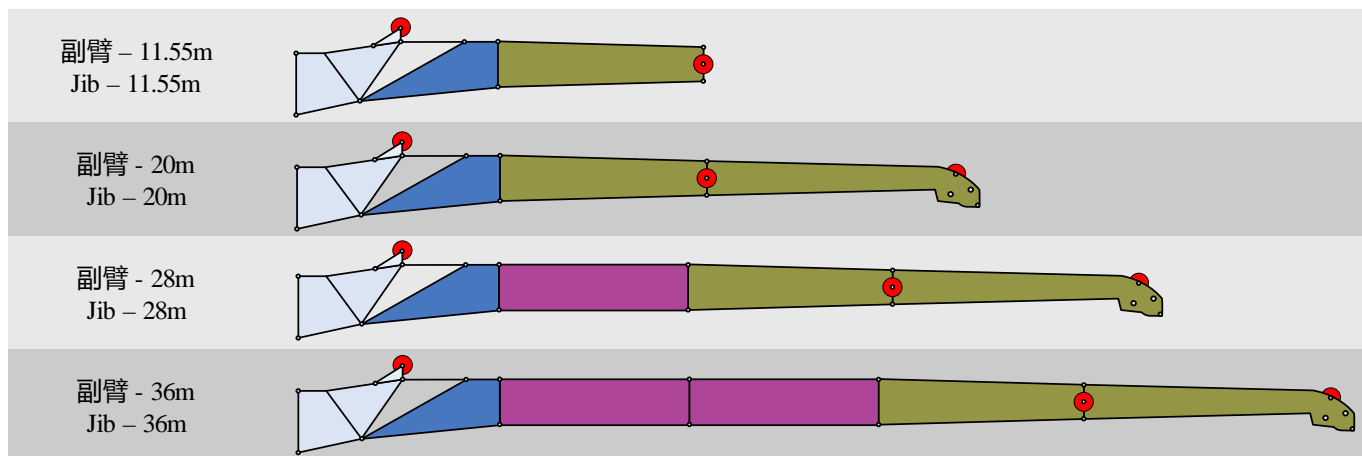


平衡重 Counterweight	A	B	C	D
尺寸 (长×宽×高) mm Size (L×W×H) mm	3050×2254×505	3050×2254×239	3050×2254×223	1780×1490×983
重量 t Weight t	12.5	10	9.5	11.5

工况模式 Working mode	65t	42t	32t	22t
组合形式 Combinations	A+B×2+C+D×2	A+B×2+C	A+B+C	A+C

臂架组合方案

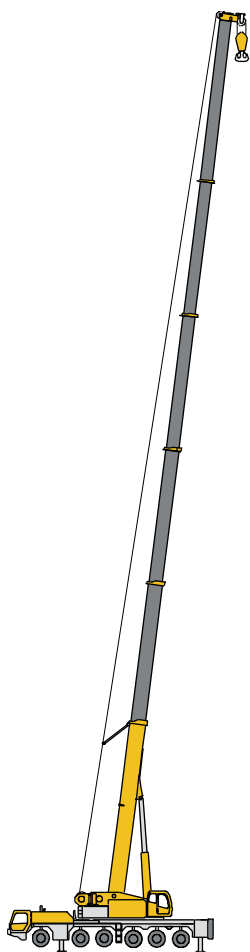
Boom/ Jib combinations



部件 Component	结构形式 Structure	尺寸 (长×宽×高) mm Size (L×W×H) mm	重量 kg Weight kg
连接架 Connection bracket		2400×850×1528	370
旋转架 Swinging bracket		3050×730×880	330
一节副臂总成 First jib section assembly		7700×700×900	700
二节副臂总成 Second jib section assembly		8530×400×580	565
副臂加长节 Jib extension		8000×600×900	560

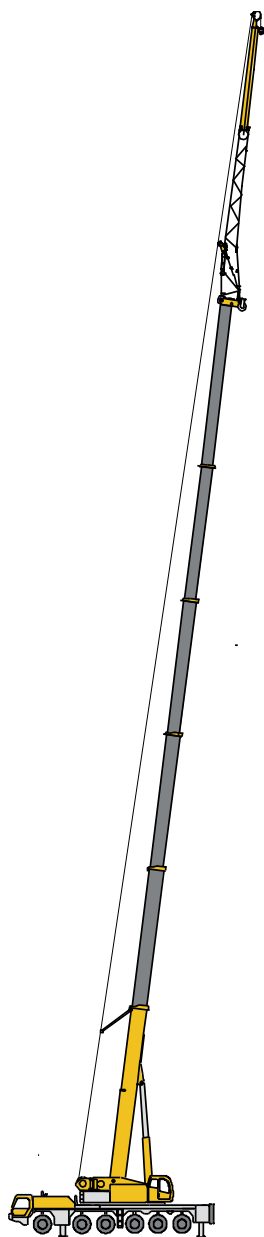
臂架组合方案

Boom/ Jib combinations



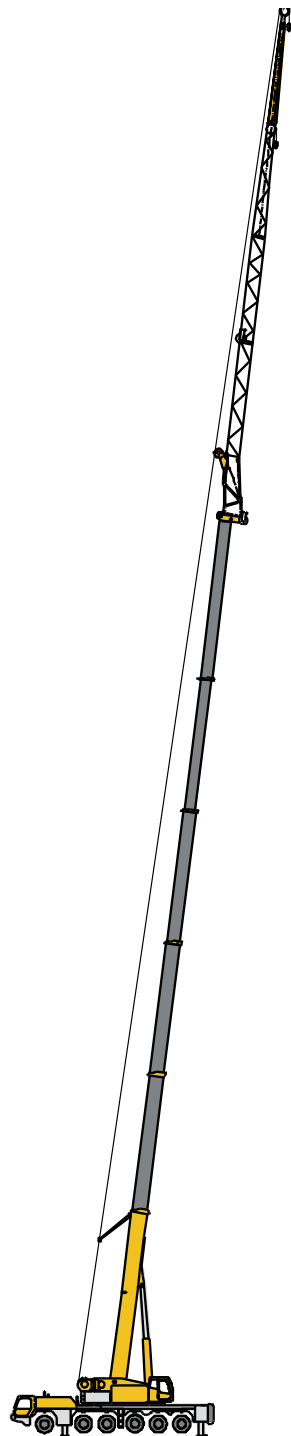
主臂
Telescopic boom

T : 13.8~61m



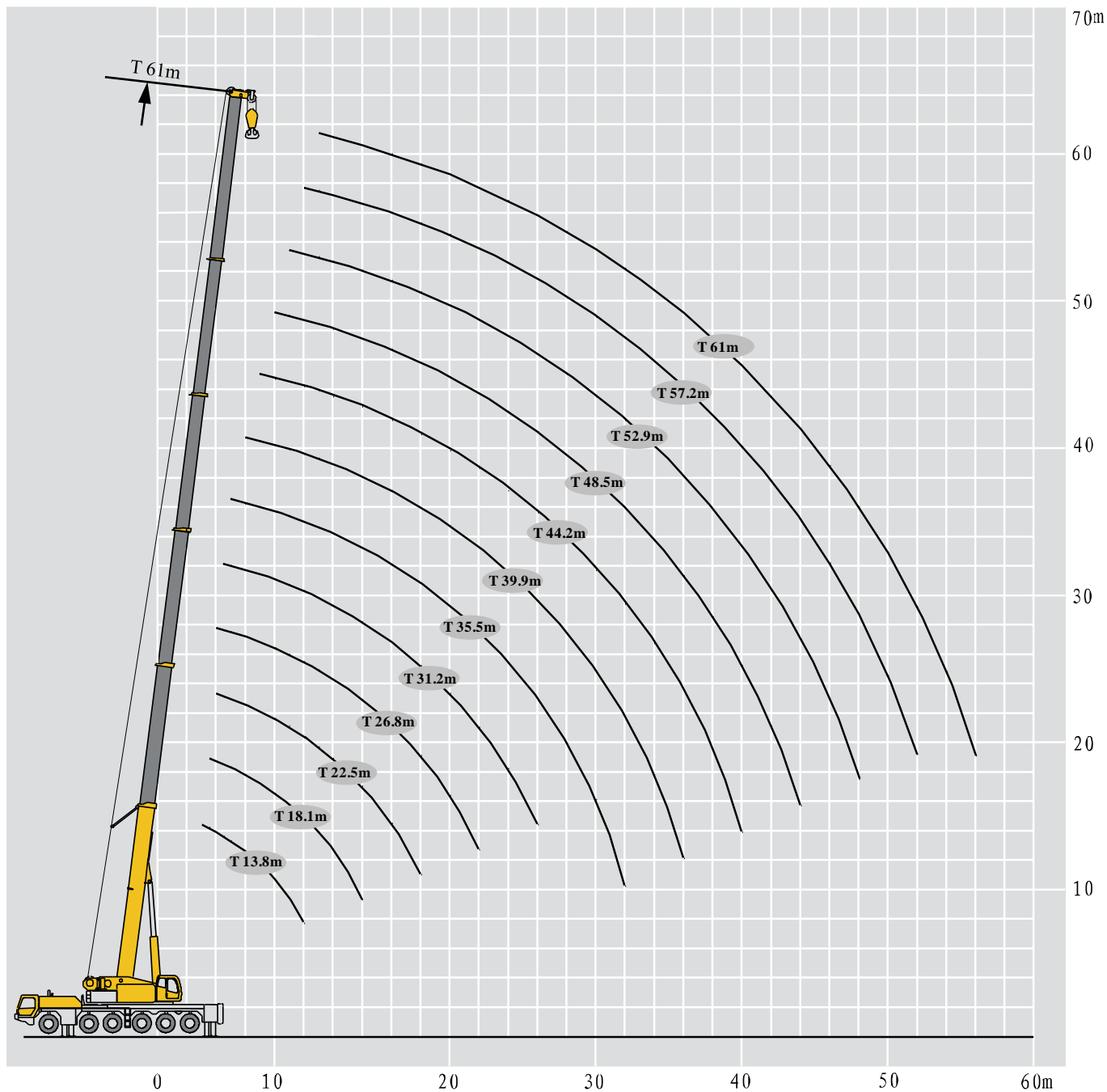
副臂
Jib

T : 44.2~61m
J : 11.55~20 m



副臂 + 加长节
Jib + Jib extension

T : 44.2~61m
J : 11.55~20 m
E : 8~16m



起重性能表

Lifting capacities

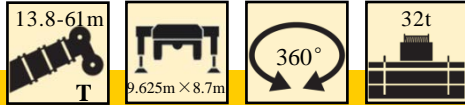
T 13.8~61m

m	13.8-61m T												m
	13.8m	18.1m	22.5m	26.8m	31.2m	35.5m	39.9m	44.2m	48.5m	52.9m	57.2m	61m	
3	200.0												3
3.5	185.0	120.0											3.5
4	170.0	118.0	115.0	98.0									4
4.5	153.6	115.0	112.0	95.0	78.0								4.5
5	138.2	110.0	104.5	91.0	75.0	61.0							5
6	114.7	105.0	92.5	85.0	72.5	60.0	50.0						6
7	97.4	98.4	84.0	78.0	68.0	57.0	48.5	41.0					7
8	84.2	85.3	73.5	72.5	63.0	52.0	45.2	39.0	32.5				8
9	73.8	74.9	68.0	65.5	57.0	48.0	43.2	37.0	32.0	26.5			9
10	65.4	66.5	61.0	58.0	53.0	45.0	40.6	35.0	31.0	26.0	22.5		10
11		59.5	57.0	53.0	49.0	42.0	38.2	33.8	30.0	25.5	21.2	19.4	11
12		53.3	53.0	48.0	47.0	40.0	36.2	32.5	28.6	24.8	20.0	18.2	12
14		43.5	44.6	43.0	42.0	35.0	31.6	28.9	26.0	23.2	18.5	16.8	14
16			36.5	37.4	37.0	31.0	28.5	26.0	23.6	21.4	17.0	15.5	16
18			29.9	30.7	31.7	28.0	25.8	23.5	21.6	19.6	15.6	14.5	18
20				25.6	26.6	25.5	23.5	21.2	19.6	18.1	14.4	13.5	20
22				21.7	22.6	22.5	21.8	19.2	18.0	16.8	13.4	12.5	22
24					19.4	20.5	19.5	17.6	16.5	15.5	12.5	11.5	24
26					16.8	19.2	18.3	16.5	15.2	14.5	11.7	10.8	26
28						17.2	16.1	15.2	14.0	13.4	11.0	10.0	28
30						15.3	14.2	14.2	13.0	12.2	10.5	9.2	30
32						13.4	12.6	13.0	12.0	11.5	10.0	8.5	32
34							11.2	11.6	11.2	10.5	9.5	7.8	34
36							9.9	10.3	10.5	9.6	8.5	7.2	36
38								9.3	9.6	8.8	7.5	6.8	38
40								8.3	8.8	8.4	6.8	6.2	40
42									7.9	7.8	6.5	5.9	42
44									7.1	7.5	6.2	5.6	44
46										7.0	5.9	5.3	46
48										6.3	5.4	5.0	48
50											5.0	4.7	50
52											4.7	4.4	52
54												4.1	54
56												3.8	56
组合	00000	00100	01100	11100	12100	21110	21111	22111	22211	22221	22222	33333	组合

起重性能表

Lifting capacities

T 13.8~61m

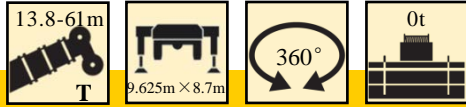


m	13.8m 18.1m 22.5m 26.8m 31.2m 35.5m 39.9m 44.2m 48.5m 52.9m 57.2m 61m												m
	13.8m	18.1m	22.5m	26.8m	31.2m	35.5m	39.9m	44.2m	48.5m	52.9m	57.2m	61m	
3	198.7												3
3.5	171.9	120.0											3.5
4	151.1	118.0	115.0	98.0									4
4.5	134.4	115.0	112.0	95.0	78.0								4.5
5	120.9	110.0	104.5	91.0	75.0	61.0							5
6	100.0	101.0	92.5	85.0	72.5	60.0	50.0						6
7	84.2	85.3	84.0	78.0	68.0	57.0	48.5	41.0					7
8	71.2	72.3	73.5	72.5	63.0	52.0	45.2	39.0	32.5				8
9	61.2	62.4	63.5	64.3	57.0	48.0	43.2	37.0	32.0	26.5			9
10	50.8	51.9	53.5	54.5	53.0	45.0	40.6	35.0	31.0	26.0	22.5		10
11		43.3	44.7	45.7	46.9	42.0	38.2	33.8	30.0	25.5	21.2	19.4	11
12		36.6	38.1	39.0	40.1	40.0	36.2	32.5	28.6	24.8	20.0	18.2	12
14		27.1	28.5	29.4	30.5	31.3	31.6	28.9	26.0	23.2	18.5	16.8	14
16			22.1	22.9	24.0	24.7	25.6	26.0	23.6	21.4	17.0	15.5	16
18			17.4	18.3	19.3	20.0	20.9	21.3	21.6	19.6	15.6	14.5	18
20				14.7	15.7	16.4	17.3	17.7	18.3	18.1	14.4	13.5	20
22				11.9	12.9	13.6	14.4	14.9	15.4	16.0	13.4	12.5	22
24					10.7	11.4	12.2	12.6	13.1	13.7	12.5	11.5	24
26					8.8	9.5	10.3	10.7	11.2	11.9	11.7	10.8	26
28						8.0	8.7	9.1	9.7	10.3	10.8	10.0	28
30						6.6	7.4	7.8	8.3	8.9	9.4	9.2	30
32						5.7	6.3	6.7	7.2	7.8	8.3	8.5	32
34							5.3	5.7	6.2	6.8	7.3	7.6	34
36							4.4	4.8	5.3	5.9	6.4	6.7	36
38								4.0	4.6	5.1	5.6	6.0	38
40								3.3	3.9	4.4	4.9	5.3	40
42									3.3	3.8	4.3	4.7	42
44									2.7	3.3	3.7	4.1	44
46										2.8	3.2	3.6	46
48										2.3	2.8	3.1	48
50											2.4	2.7	50
52											2.0	2.3	52
54												2.0	54
56												1.6	56
组合	00000	00100	01100	11100	12100	21110	21111	22111	22211	22221	22222	33333	组合

起重性能表

Lifting capacities

T 13.8~61m

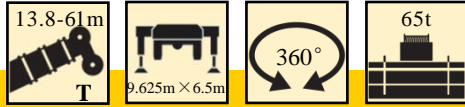


m	T 13.8~61m												m
	13.8m	18.1m	22.5m	26.8m	31.2m	35.5m	39.9m	44.2m	48.5m	52.9m	57.2m	61m	
3	172.0												3
3.5	149.0	120.0											3.5
4	130.0	118.0	115.0	98.0									4
4.5	115.0	115.0	112.0	95.0	78.0								4.5
5	101.0	103.0	104.0	91.0	75.0	61.0							5
6	80.6	81.7	83.0	83.8	72.5	60.0	50.0						6
7	56.1	57.4	59.5	60.8	62.5	57.0	48.5	41.0					7
8	40.4	41.6	43.4	44.6	46.1	47.2	45.2	39.0	32.5				8
9	30.5	31.6	33.3	34.4	35.7	36.7	37.9	37.0	32.0	26.5			9
10	23.6	24.8	26.3	27.3	28.6	29.5	30.6	31.2	31.0	26.0	22.5		10
11		19.7	21.2	22.2	23.4	24.3	25.3	25.8	26.6	25.5	21.2	19.4	11
12		15.5	17.1	18.1	19.4	20.3	21.3	21.8	22.5	23.2	20.0	18.2	12
14		9.7	11.2	12.1	13.3	14.2	15.2	15.7	16.3	17.1	17.8	16.8	14
16			7.3	8.2	9.3	10.1	11.1	11.5	12.2	12.9	13.5	13.9	16
18			4.5	5.4	6.5	7.3	8.2	8.6	9.2	9.9	10.5	10.9	18
20				3.3	4.4	5.1	6.0	6.5	7.1	7.7	8.3	8.7	20
22				1.7	2.7	3.5	4.3	4.8	5.4	6.0	6.6	6.9	22
24					1.4	2.2	3.0	3.4	4.0	4.6	5.2	5.6	24
26						1.1	1.9	2.4	2.9	3.5	4.1	4.4	26
28							1.0	1.4	2.0	2.6	3.1	3.5	28
30									1.2	1.8	2.3	2.7	30
32										1.2	1.7	2.0	32
34											1.1	1.4	34
组合	00000	00100	01100	11100	12100	21110	21111	22111	22211	22221	22222	33333	组合

起重性能表

Lifting capacities

T 13.8~61m



m	T												m	
	13.8m	18.1m	22.5m	26.8m	31.2m	35.5m	39.9m	44.2m	48.5m	52.9m	57.2m	61m		
3	200.0													3
3.5	185.0	120.0												3.5
4	170.0	118.0	115.0	98.0										4
4.5	153.6	115.0	112.0	95.0	78.0									4.5
5	138.2	110.0	104.5	91.0	75.0	61.0								5
6	114.7	105.0	92.5	85.0	72.5	60.0	50.0							6
7	97.4	98.4	84.0	78.0	68.0	57.0	48.5	41.0						7
8	84.2	85.3	73.5	72.5	63.0	52.0	45.2	39.0	32.5					8
9	73.8	74.9	68.0	65.5	57.0	48.0	43.2	37.0	32.0	26.5				9
10	61.5	62.6	61.0	58.0	53.0	45.0	40.6	35.0	31.0	26.0	22.5			10
11		52.9	54.3	53.0	49.0	42.0	38.2	33.8	30.0	25.5	21.2	19.4		11
12		45.5	46.8	47.7	47.0	40.0	36.2	32.5	28.6	24.8	20.0	18.2		12
14		34.7	36.0	36.9	37.9	35.0	31.6	28.9	26.0	23.2	18.5	16.8		14
16			28.6	29.4	30.4	31.0	28.5	26.0	23.6	21.4	17.0	15.5		16
18			23.1	23.9	24.9	25.7	25.8	23.5	21.6	19.6	15.6	14.5		18
20				19.8	20.8	21.5	22.3	21.2	19.6	18.1	14.4	13.5		20
22				16.5	17.5	18.2	19.0	19.2	18.0	16.8	13.4	12.5		22
24					14.8	15.5	16.3	16.7	16.5	15.5	12.5	11.5		24
26					12.6	13.3	14.1	14.5	15.0	14.5	11.7	10.8		26
28						11.5	12.3	12.7	13.2	13.4	11.0	10.0		28
30						9.9	10.7	11.1	11.6	12.2	10.5	9.2		30
32						8.8	9.3	9.7	10.3	10.8	10.0	8.5		32
34							8.2	8.6	9.1	9.6	9.5	7.8		34
36							7.1	7.5	8.0	8.6	8.5	7.2		36
38								6.6	7.1	7.7	7.5	6.8		38
40								5.8	6.3	6.9	6.8	6.2		40
42									5.6	6.1	6.5	5.9		42
44									4.9	5.5	5.9	5.6		44
46										4.9	5.3	5.3		46
48										4.3	4.8	5.0		48
50											4.3	4.6		50
52											3.8	4.1		52
54												3.7		54
56												3.3		56
组合	00000	00100	01100	11100	12100	21110	21111	22111	22211	22221	22222	33333	组合	

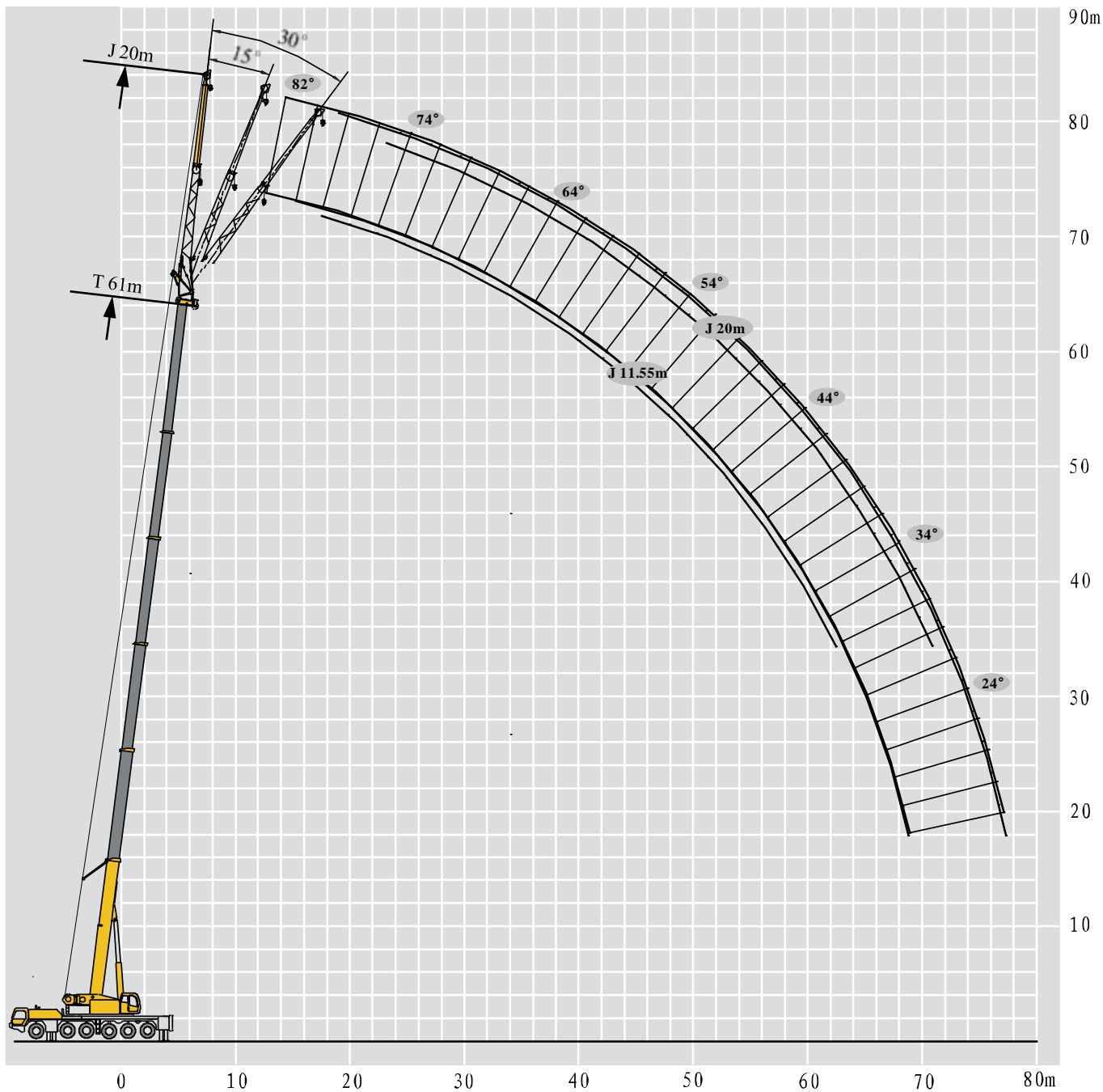
起重性能表

Lifting capacities

T 13.8~61m

		13.8-61m T		9.625m × 6.5m		360°		32t														
m		13.8m	18.1m	22.5m	26.8m	31.2m	35.5m	39.9m	44.2m	48.5m	52.9m	57.2m	61m	m								
3	199.0													3								
3.5	172.0	120.0												3.5								
4	151.0	118.0	115.0	98.0										4								
4.5	134.0	115.0	112.0	95.0	78.0									4.5								
5	121.0	110.0	105.0	91.0	75.0	61.0								5								
6	100.0	101.0	92.5	85.0	72.5	60.0	50.0							6								
7	75.6	76.9	78.7	78.0	68.0	57.0	48.5	41.0						7								
8	57.0	58.1	59.8	60.9	62.3	52.0	45.2	39.0	32.5					8								
9	44.8	45.9	47.4	48.5	49.7	48.0	43.2	37.0	32.0	26.5				9								
10	36.2	37.3	38.7	39.7	40.9	41.8	40.6	35.0	31.0	26.0	22.5			10								
11		30.9	32.3	33.2	34.3	35.2	36.2	33.8	30.0	25.5	21.2	19.4		11								
12		25.9	27.3	28.2	29.3	30.1	31.1	31.6	28.6	24.8	20.0	18.2		12								
14		18.7	20.1	21.0	22.0	22.8	23.7	24.1	24.7	23.2	18.5	16.8		14								
16			15.1	16.0	17.0	17.7	18.6	19.0	19.6	20.3	17.0	15.5		16								
18			11.5	12.3	13.3	14.1	14.9	15.3	15.9	16.5	15.6	14.5		18								
20				9.6	10.5	11.3	12.1	12.5	13.1	13.7	14.2	13.5		20								
22				7.4	8.4	9.1	9.9	10.3	10.8	11.4	12.0	12.3		22								
24					6.6	7.3	8.1	8.5	9.0	9.6	10.1	10.5		24								
26					5.1	5.8	6.6	7.0	7.5	8.1	8.6	9.0		26								
28						4.6	5.4	5.8	6.3	6.9	7.4	7.7		28								
30						3.5	4.3	4.7	5.2	5.8	6.3	6.6		30								
32						2.9	3.4	3.8	4.3	4.9	5.4	5.7		32								
34							2.6	3.0	3.5	4.1	4.6	4.9		34								
36							1.9	2.3	2.8	3.4	3.9	4.2		36								
38								1.7	2.2	2.8	3.2	3.6		38								
40								1.1	1.6	2.2	2.7	3.0		40								
42									1.1	1.7	2.2	2.5		42								
44										1.3	1.7	2.1		44								
46											1.3	1.7		46								
48												1.0	1.3	48								
组合	00000	00100	01100	11100	12100	21110	21111	22111	22211	22221	22222	33333	组合									

		13.8-61m T		9.625m × 6.5m		360°		0t														
m		13.8m	18.1m	22.5m	26.8m	31.2m	35.5m	39.9m	44.2m	48.5m	52.9m	57.2m	61m	m								
3	172.0													3								
3.5	149.0	120.0												3.5								
4	130.0	118.0	115.0	98.0										4								
4.5	115.0	115.0	112.0	95.0	78.0									4.5								
5	101.0	103.0	104.0	91.0	75.0	61.0								5								
6	80.6	81.7	83.0	83.8	72.5	60.0	50.0							6								
7	31.4	32.7	34.5	35.8	37.3	38.5	39.8	40.5						7								
8	22.1	23.2	24.9	26.0	27.4	28.4	29.6	30.2	31.1					8								
9	16.0	17.1	18.6	19.6	20.9	21.9	23.0	23.5	24.3	25.1				9								
10	11.6	12.7	14.2	15.1	16.3	17.2	18.3	18.8	19.5	20.3	21.0			10								
11		9.5	10.9	11.8	13.0	13.8	14.8	15.3	16.0	16.8	17.4	17.9		11								
12		7.0	8.4	9.2	10.3	11.2	12.1	12.6	13.3	14.0	14.6	15.1		12								
14		3.3	4.7	5.5	6.6	7.4	8.3	8.7	9.3	10.0	10.6	11.0		14								
16			2.1	3.0	4.0	4.7	5.6	6.0	6.6	7.3	7.8	8.3		16								
18				1.1	2.1	2.8	3.7	4.1	4.7	5.3	5.8	6.2		18								
20					1.4	2.2	2.6	3.2	3.8	4.3	4.7	5.0		20								
22								1.4	2.0	2.6	3.1	3.5		22								
24										1.6	2.1	2.5		24								
26											1.3	1.7		26								
组合	00000	00100	01100	11100	12100	21110	21111	22111	22211	22221	22222	33333	组合									



起重性能表

Lifting capacities

T 44.2~61m

	44.2-61m		11.55m			9.625m×8.7m			360°			65t				
	44.2m			48.5m			52.9m			57.2m			61m			
	11.55m			11.55m			11.55m			11.55m			11.55m			
	0°	15°	30°	0°	15°	30°	0°	15°	30°	0°	15°	30°	0°	15°		30°
82°	12.0	8.3	6.0	12.0	8.3	6.0	12.0	8.3	6.0	12.0	8.3	6.0	12.0	8.3	6.0	82°
80°	12.0	8.3	6.0	12.0	8.3	6.0	12.0	8.3	6.0	12.0	8.3	6.0	12.0	8.3	6.0	80°
78°	11.5	8.0	5.9	11.5	8.0	5.9	11.5	8.0	5.9	11.5	8.0	5.9	11.5	8.0	5.9	78°
76°	10.8	7.7	5.7	10.8	7.7	5.7	10.8	7.7	5.7	10.8	7.7	5.7	10.8	7.7	5.7	76°
74°	10.3	7.4	5.5	10.3	7.4	5.5	10.3	7.4	5.5	10.3	7.4	5.5	10.3	7.4	5.5	74°
72°	9.8	7.1	5.3	9.8	7.1	5.3	9.8	7.1	5.3	9.8	7.1	5.3	9.8	7.1	5.3	72°
70°	9.4	6.8	5.2	9.4	6.8	5.2	9.4	6.8	5.2	9.4	6.8	5.2	9.4	6.8	5.2	70°
68°	9.0	6.5	5.1	9.0	6.5	5.1	9.0	6.5	5.1	9.0	6.5	5.1	9.0	6.5	5.1	68°
66°	8.6	6.2	5.0	8.6	6.2	5.0	8.6	6.2	5.0	8.6	6.2	5.0	8.6	6.2	5.0	66°
64°	8.2	6.0	4.9	8.2	6.0	4.9	8.2	6.0	4.9	8.2	6.0	4.9	8.2	6.0	4.9	64°
62°	7.9	5.8	4.9	7.9	5.8	4.9	7.9	5.8	4.9	7.9	5.8	4.9	7.9	5.8	4.9	62°
60°	7.6	5.6	4.7	7.6	5.6	4.7	7.6	5.6	4.7	7.6	5.6	4.7	7.6	5.6	4.7	60°
58°	7.3	5.4	4.6	7.3	5.4	4.6	7.3	5.4	4.6	7.3	5.4	4.6	7.3	5.4	4.6	58°
56°	7.0	5.2	4.5	7.0	5.2	4.5	7.0	5.2	4.5	7.0	5.2	4.5	7.0	5.2	4.5	56°
54°	6.7	5.1	4.4	6.7	5.1	4.4	6.7	5.1	4.4	6.7	5.1	4.4	6.7	5.1	4.4	54°
52°	6.4	5.0	4.3	6.4	5.0	4.3	6.4	5.0	4.3	6.4	5.0	4.3	6.4	5.0	4.3	52°
50°	6.2	4.9	4.3	6.2	4.9	4.3	6.2	4.9	4.3	6.2	4.9	4.3	6.2	4.9	4.3	50°
48°	6.0	4.8	4.2	6.0	4.8	4.2	6.0	4.8	4.2	6.0	4.8	4.2	5.8	4.8	4.2	48°
46°	5.8	4.7	4.2	5.8	4.7	4.2	5.8	4.7	4.2	5.8	4.7	4.2	5.4	4.7	4.2	46°
44°	5.6	4.6	4.2	5.6	4.6	4.2	5.6	4.6	4.2	5.5	4.6	4.2	5.0	4.6	4.2	44°
42°	5.4	4.5	4.1	5.4	4.5	4.1	5.4	4.5	4.1	5.2	4.5	4.1	4.7	4.5	4.1	42°
40°	5.2	4.4	4.1	5.2	4.4	4.1	5.2	4.4	4.1	4.8	4.4	4.1	4.3	4.2	4.1	40°
38°	5.0	4.3	4.1	5.0	4.3	4.1	5.0	4.3	4.1	4.5	4.3	4.1	4.1	4.0	3.9	38°
36°	4.9	4.3	4.0	4.9	4.3	4.0	4.8	4.3	4.0	4.3	4.1	4.0	3.8	3.7	3.7	36°
34°	4.8	4.2	4.0	4.8	4.2	4.0	4.6	4.2	4.0	4.0	3.9	3.9	3.6	3.5	3.5	34°
32°	4.8	4.2		4.8	4.2		4.3	4.2		3.8	3.7		3.4	3.3		32°
30°	4.7	4.2		4.7	4.2		4.1	4.0		3.6	3.5		3.2	3.2		30°
28°	4.6	4.1		4.5	4.1		3.9	3.8		3.4	3.4		3.1	3.0		28°
26°	4.5	4.1		4.3	4.1		3.8	3.7		3.3	3.2		2.9	2.9		26°
24°	4.4	4.1		4.1	4.1		3.6	3.5		3.2	3.1		2.8	2.7		24°
22°	4.3	4.1		4.0	3.9		3.5	3.4		3.0	3.0		2.7	2.6		22°
20°	4.3	4.0		3.9	3.8		3.4	3.3		2.9	2.9		2.6	2.5		20°
18°	4.2	4.0		3.8	3.7		3.3	3.2		2.8	2.8		2.5	2.5		18°
16°	4.2			3.7			3.2			2.8			2.4			16°
组合	22111/12211/11122			22211/12221/11222			22221/12222			22222			33333			组合

起重性能表

Lifting capacities

T 44.2~61m

	44.2-61m		20m		9.625m×8.7m		360°		65t																								
	44.2m			48.5m			52.9m			57.2m			61m																				
	20m			20m			20m			20m			20m																				
	0°	15°	30°	0°	15°	30°	0°	15°	30°	0°	15°	30°	0°	15°	30°	0°	15°	30°															
82°	6.4	3.7	2.5	6.4	3.7	2.5	6.4	3.7	2.5	6.4	3.7	2.5	6.4	3.7	2.5	6.4	3.7	2.5															
80°	6.2	3.5	2.3	6.2	3.5	2.3	6.2	3.5	2.3	6.2	3.5	2.3	6.2	3.5	2.3	6.2	3.5	2.3															
78°	5.8	3.3	2.2	5.8	3.3	2.2	5.8	3.3	2.2	5.8	3.3	2.2	5.8	3.3	2.2	5.8	3.3	2.2															
76°	5.4	3.1	2.1	5.4	3.1	2.1	5.4	3.1	2.1	5.4	3.1	2.1	5.4	3.1	2.1	5.4	3.1	2.1															
74°	5.0	2.9	2.0	5.0	2.9	2.0	5.0	2.9	2.0	5.0	2.9	2.0	5.0	2.9	2.0	5.0	2.9	2.0															
72°	4.6	2.7	2.0	4.6	2.7	2.0	4.6	2.7	2.0	4.6	2.7	2.0	4.6	2.7	2.0	4.6	2.7	2.0															
70°	4.2	2.6	1.9	4.2	2.6	1.9	4.2	2.6	1.9	4.2	2.6	1.9	4.2	2.6	1.9	4.2	2.6	1.9															
68°	3.9	2.5	1.9	3.9	2.5	1.9	3.9	2.5	1.9	3.9	2.5	1.9	3.9	2.5	1.9	3.9	2.5	1.9															
66°	3.6	2.4	1.8	3.6	2.4	1.8	3.6	2.4	1.8	3.6	2.4	1.8	3.6	2.4	1.8	3.6	2.4	1.8															
64°	3.4	2.3	1.8	3.4	2.3	1.8	3.4	2.3	1.8	3.4	2.3	1.8	3.4	2.3	1.8	3.4	2.3	1.8															
62°	3.2	2.2	1.7	3.2	2.2	1.7	3.2	2.2	1.7	3.2	2.2	1.7	3.2	2.2	1.7	3.2	2.2	1.7															
60°	3.0	2.1	1.7	3.0	2.1	1.7	3.0	2.1	1.7	3.0	2.1	1.7	3.0	2.1	1.7	3.0	2.1	1.7															
58°	2.8	2.0	1.7	2.8	2.0	1.7	2.8	2.0	1.7	2.8	2.0	1.7	2.8	2.0	1.7	2.8	2.0	1.7															
56°	2.7	2.0	1.6	2.7	2.0	1.6	2.7	2.0	1.6	2.7	2.0	1.6	2.7	2.0	1.6	2.7	2.0	1.6															
54°	2.6	1.9	1.6	2.6	1.9	1.6	2.6	1.9	1.6	2.6	1.9	1.6	2.6	1.9	1.6	2.6	1.9	1.6															
52°	2.4	1.9	1.6	2.4	1.9	1.6	2.4	1.9	1.6	2.4	1.9	1.6	2.4	1.9	1.6	2.4	1.9	1.6															
50°	2.3	1.8	1.5	2.3	1.8	1.5	2.3	1.8	1.5	2.3	1.8	1.5	2.3	1.8	1.5	2.3	1.8	1.5															
48°	2.2	1.8	1.5	2.2	1.8	1.5	2.2	1.8	1.5	2.2	1.8	1.5	2.2	1.8	1.5	2.2	1.8	1.5															
46°	2.1	1.7	1.5	2.1	1.7	1.5	2.1	1.7	1.5	2.1	1.7	1.5	2.1	1.7	1.5	2.1	1.7	1.5															
44°	2.1	1.7	1.5	2.1	1.7	1.5	2.1	1.7	1.5	2.1	1.7	1.5	2.1	1.7	1.5	2.1	1.7	1.5															
42°	2.0	1.6	1.5	2.0	1.6	1.5	2.0	1.6	1.5	2.0	1.6	1.5	2.0	1.6	1.5	2.0	1.6	1.5															
40°	2.0	1.6	1.5	2.0	1.6	1.5	2.0	1.6	1.5	2.0	1.6	1.5	2.0	1.6	1.5	2.0	1.6	1.5															
38°	1.9	1.6	1.5	1.9	1.6	1.5	1.9	1.6	1.5	1.9	1.6	1.5	1.9	1.6	1.5	1.9	1.6	1.5															
36°	1.9	1.5	1.4	1.9	1.5	1.4	1.9	1.5	1.4	1.9	1.5	1.4	1.9	1.5	1.4	1.9	1.5	1.4															
34°	1.8	1.5	1.4	1.8	1.5	1.4	1.8	1.5	1.4	1.8	1.5	1.4	1.8	1.5	1.4	1.8	1.5	1.4															
32°	1.8	1.5		1.8	1.5		1.8	1.5		1.8	1.5		1.8	1.5		1.8	1.5																
30°	1.7	1.5		1.7	1.5		1.7	1.5		1.7	1.5		1.7	1.5		1.7	1.5																
28°	1.7	1.5		1.7	1.5		1.7	1.5		1.7	1.5		1.7	1.5		1.7	1.5																
26°	1.7	1.5		1.7	1.5		1.7	1.5		1.7	1.5		1.7	1.5		1.7	1.5																
24°	1.6	1.5		1.6	1.5		1.6	1.5		1.6	1.5		1.6	1.5		1.6	1.5																
22°	1.6	1.5		1.6	1.5		1.6	1.5		1.6	1.5		1.6	1.5		1.6	1.5																
20°	1.6	1.5		1.6	1.5		1.6	1.5		1.6	1.5		1.6	1.5		1.6	1.5																
18°	1.5	1.5		1.5	1.5		1.5	1.5		1.5	1.5		1.5	1.5		1.5	1.5																
16°	1.5			1.5			1.5			1.5			1.5			1.5																	
组合	22111/12211/11122			22211/12221/11222			22221/12222			22222			33333			组合																	

起重性能表

Lifting capacities

T 44.2~61m

	44.2-61m		11.55m			9.625m×8.7m			360°			32t				
	44.2m			48.5m			52.9m			57.2m			61m			
	11.55m			11.55m			11.55m			11.55m			11.55m			
	0°	15°	30°	0°	15°	30°	0°	15°	30°	0°	15°	30°	0°	15°		30°
82°	12.0	8.3	6.0	12.0	8.3	6.0	12.0	8.3	6.0	12.0	8.3	6.0	12.0	8.3	6.0	82°
80°	12.0	8.3	6.0	12.0	8.3	6.0	12.0	8.3	6.0	12.0	8.3	6.0	12.0	8.3	6.0	80°
78°	12.0	8.0	5.9	12.0	8.0	5.9	12.0	8.0	5.9	12.0	8.0	5.9	12.0	8.0	5.9	78°
76°	11.0	7.7	5.7	11.0	7.7	5.7	11.0	7.7	5.7	11.0	7.7	5.7	11.0	7.7	5.7	76°
74°	10.0	7.4	5.5	10.0	7.4	5.5	10.0	7.4	5.5	10.0	7.4	5.5	10.0	7.4	5.5	74°
72°	9.8	7.1	5.3	9.8	7.1	5.3	9.8	7.1	5.3	9.8	7.1	5.3	9.8	7.1	5.3	72°
70°	9.4	6.8	5.2	9.4	6.8	5.2	9.4	6.8	5.2	9.4	6.8	5.2	9.4	6.8	5.2	70°
68°	9.0	6.5	5.1	9.0	6.5	5.1	9.0	6.5	5.1	9.0	6.5	5.1	8.9	6.5	5.1	68°
66°	8.6	6.2	5.0	8.6	6.2	5.0	8.6	6.2	5.0	8.5	6.2	5.0	7.7	6.2	5.0	66°
64°	8.2	6.0	4.9	8.2	6.0	4.9	8.2	6.0	4.9	7.4	6.0	4.9	6.7	6.0	4.9	64°
62°	7.9	5.8	4.9	7.9	5.8	4.9	7.4	5.8	4.9	6.5	5.8	4.9	5.8	5.4	4.9	62°
60°	7.6	5.6	4.7	7.4	5.6	4.7	6.5	5.6	4.7	5.7	5.3	4.7	5.1	4.8	4.6	60°
58°	7.3	5.4	4.6	6.6	5.4	4.6	5.8	5.4	4.6	5.0	4.7	4.5	4.5	4.2	4.0	58°
56°	7.0	5.2	4.5	5.9	5.2	4.5	5.1	4.8	4.5	4.5	4.2	4.0	4.0	3.7	3.6	56°
54°	6.3	5.1	4.4	5.2	4.9	4.4	4.5	4.3	4.1	3.9	3.7	3.6	3.5	3.3	3.2	54°
52°	5.6	5.0	4.3	4.7	4.4	4.2	4.0	3.8	3.7	3.5	3.3	3.2	3.1	2.9	2.8	52°
50°	5.1	4.8	4.3	4.2	3.9	3.8	3.6	3.4	3.3	3.1	2.9	2.8	2.7	2.6	2.5	50°
48°	4.6	4.3	4.1	3.7	3.5	3.4	3.2	3.0	2.9	2.7	2.6	2.5	2.4	2.2	2.2	48°
46°	4.1	3.9	3.8	3.4	3.2	3.1	2.8	2.7	2.6	2.4	2.3	2.2	2.1	2.0	1.9	46°
44°	3.7	3.6	3.4	3.0	2.9	2.8	2.5	2.4	2.3	2.1	2.0	2.0	1.8	1.7	1.7	44°
42°	3.4	3.2	3.1	2.7	2.6	2.5	2.2	2.1	2.1	1.9	1.8	1.7	1.6	1.5	1.5	42°
40°	3.1	2.9	2.9	2.4	2.3	2.3	2.0	1.9	1.9	1.6	1.6	1.5	1.3	1.3	1.3	40°
38°	2.8	2.7	2.6	2.2	2.1	2.0	1.8	1.7	1.7	1.4	1.4	1.3	1.1	1.1	1.1	38°
36°	2.5	2.4	2.4	1.9	1.9	1.8	1.6	1.5	1.5	1.2	1.2	1.2				36°
34°	2.3	2.2	2.2	1.7	1.7	1.6	1.4	1.3	1.3	1.1						34°
32°	2.1	2.0		1.5	1.5		1.2	1.2								32°
30°	1.9	1.9		1.4	1.3		1.1									30°
28°	1.8	1.7		1.2	1.2											28°
26°	1.6	1.6		1.1	1.1											26°
24°	1.5	1.4														24°
22°	1.4	1.3														22°
20°	1.3	1.2														20°
18°	1.2															18°
组合	22111/12211/11122			22211/12221/11222			22221/12222			22222			33333			组合

起重性能表

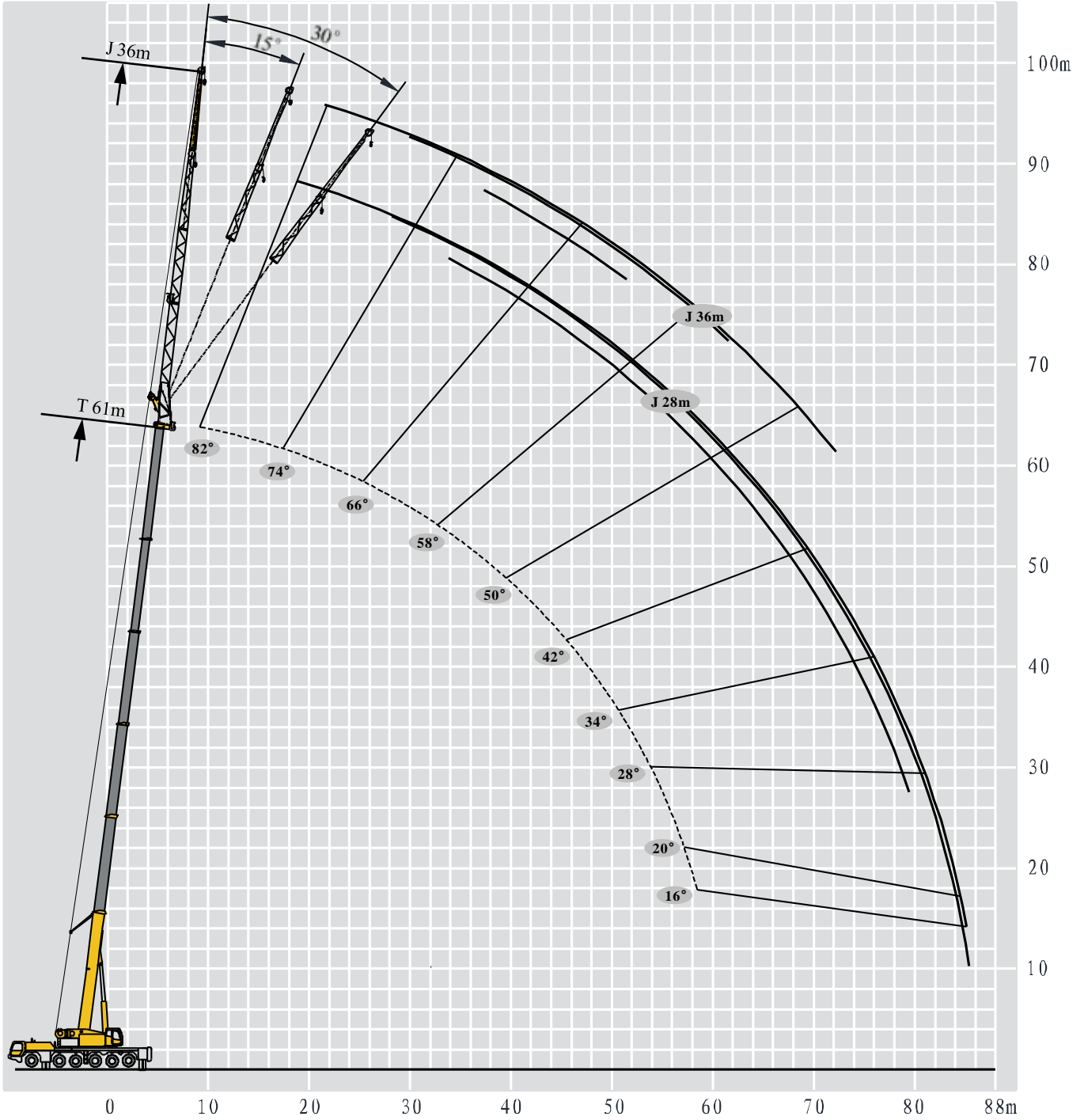
Lifting capacities

T 44.2~61m

	44.2-61m		20m		9.625m×8.7m		360°		32t							
	44.2m			48.5m			52.9m			57.2m			61m			
	20m			20m			20m			20m			20m			
	0°	15°	30°	0°	15°	30°	0°	15°	30°	0°	15°	30°	0°	15°	30°	
82°	6.4	3.7	2.5	6.4	3.7	2.5	6.4	3.7	2.5	6.4	3.7	2.5	6.4	3.7	2.5	
80°	6.2	3.5	2.3	6.2	3.5	2.3	6.2	3.5	2.3	6.2	3.5	2.3	6.2	3.5	2.3	
78°	5.8	3.3	2.2	5.8	3.3	2.2	5.8	3.3	2.2	5.8	3.3	2.2	5.8	3.3	2.2	
76°	5.4	3.1	2.1	5.4	3.1	2.1	5.4	3.1	2.1	5.4	3.1	2.1	5.4	3.1	2.1	
74°	5.0	2.9	2.0	5.0	2.9	2.0	5.0	2.9	2.0	5.0	2.9	2.0	5.0	2.9	2.0	
72°	4.6	2.7	2.0	4.6	2.7	2.0	4.6	2.7	2.0	4.6	2.7	2.0	4.6	2.7	2.0	
70°	4.2	2.6	1.9	4.2	2.6	1.9	4.2	2.6	1.9	4.2	2.6	1.9	4.2	2.6	1.9	
68°	3.9	2.5	1.9	3.9	2.5	1.9	3.9	2.5	1.9	3.9	2.5	1.9	3.9	2.5	1.9	
66°	3.6	2.4	1.8	3.6	2.4	1.8	3.6	2.4	1.8	3.6	2.4	1.8	3.6	2.4	1.8	
64°	3.4	2.3	1.8	3.4	2.3	1.8	3.4	2.3	1.8	3.4	2.3	1.8	3.4	2.3	1.8	
62°	3.2	2.2	1.7	3.2	2.2	1.7	3.2	2.2	1.7	3.2	2.2	1.7	3.2	2.2	1.7	
60°	3.0	2.1	1.7	3.0	2.1	1.7	3.0	2.1	1.7	3.0	2.1	1.7	3.0	2.1	1.7	
58°	2.8	2.0	1.7	2.8	2.0	1.7	2.8	2.0	1.7	2.8	2.0	1.7	2.8	2.0	1.7	
56°	2.7	2.0	1.6	2.7	2.0	1.6	2.7	2.0	1.6	2.7	2.0	1.6	2.7	2.0	1.6	
54°	2.6	1.9	1.6	2.6	1.9	1.6	2.6	1.9	1.6	2.6	1.9	1.6	2.5	1.9	1.6	
52°	2.4	1.9	1.6	2.4	1.9	1.6	2.4	1.9	1.6	2.4	1.9	1.6	2.2	1.9	1.6	
50°	2.3	1.8	1.5	2.3	1.8	1.5	2.3	1.8	1.5	2.2	1.8	1.5	1.9	1.7	1.5	
48°	2.2	1.8	1.5	2.2	1.8	1.5	2.2	1.8	1.5	1.9	1.7	1.5	1.6	1.5	1.4	
46°	2.1	1.7	1.5	2.1	1.7	1.5	2.0	1.7	1.5	1.6	1.5	1.4	1.4	1.3	1.2	
44°	2.1	1.7	1.5	2.1	1.7	1.5	1.7	1.6	1.5	1.4	1.3	1.2	1.1	1.1		
42°	2.0	1.6	1.5	1.8	1.6	1.5	1.5	1.4	1.3	1.2	1.1	1.1				
40°	2.0	1.6	1.5	1.6	1.5	1.4	1.3	1.2	1.1							
38°	1.9	1.6	1.5	1.4	1.3	1.3	1.1									
36°	1.7	1.5	1.4	1.2	1.1	1.1										
34°	1.5	1.4	1.4	1.1												
32°	1.3	1.3														
30°	1.2	1.1														
28°	1.1															
组合	22111/12211/11122			22211/12221/11222			22221/12222			22222			33333			组合

起升高度曲线图 Lifting heights

副臂
Jib



起重性能表

Lifting capacities

T 44.2~61m

	44.2-61m		28m		9.625m×8.7m		360°		65t																							
	44.2m			48.5m			52.9m			57.2m			61m																			
	28m			28m			28m			28m			28m																			
	0°	15°	30°	0°	15°	30°	0°	15°	30°	0°	15°	30°	0°	15°	30°	0°	15°	30°														
82°	4.8	3.3	2.4	4.8	3.3	2.4	4.8	3.3	2.4	4.8	3.3	2.4	4.8	3.3	2.4	4.8	3.3	2.4	82°													
80°	4.5	3.1	2.2	4.5	3.1	2.2	4.5	3.1	2.2	4.5	3.1	2.2	4.5	3.1	2.2	4.5	3.1	2.2	80°													
78°	4.3	2.9	2.1	4.3	2.9	2.1	4.3	2.9	2.1	4.3	2.9	2.1	4.3	2.9	2.1	4.3	2.9	2.1	78°													
76°	4.1	2.7	2.0	4.1	2.7	2.0	4.1	2.7	2.0	4.1	2.7	2.0	4.1	2.7	2.0	4.1	2.7	2.0	76°													
74°	3.9	2.5	1.9	3.9	2.5	1.9	3.9	2.5	1.9	3.9	2.5	1.9	3.9	2.5	1.9	3.9	2.5	1.9	74°													
72°	3.7	2.4	1.8	3.7	2.4	1.8	3.7	2.4	1.8	3.7	2.4	1.8	3.7	2.4	1.8	3.7	2.4	1.8	72°													
70°	3.5	2.3	1.7	3.5	2.3	1.7	3.5	2.3	1.7	3.5	2.3	1.7	3.5	2.3	1.7	3.5	2.3	1.7	70°													
68°	3.3	2.2	1.7	3.3	2.2	1.7	3.3	2.2	1.7	3.3	2.2	1.7	3.3	2.2	1.7	3.3	2.2	1.7	68°													
66°	3.1	2.1	1.6	3.1	2.1	1.6	3.1	2.1	1.6	3.1	2.1	1.6	3.1	2.1	1.6	3.1	2.1	1.6	66°													
64°	2.9	2.0	1.6	2.9	2.0	1.6	2.9	2.0	1.6	2.9	2.0	1.6	2.9	2.0	1.6	2.9	2.0	1.6	64°													
62°	2.7	1.9	1.5	2.7	1.9	1.5	2.7	1.9	1.5	2.7	1.9	1.5	2.7	1.9	1.5	2.7	1.9	1.5	62°													
60°	2.5	1.8	1.5	2.5	1.8	1.5	2.5	1.8	1.5	2.5	1.8	1.5	2.5	1.8	1.5	2.5	1.8	1.5	60°													
58°	2.4	1.7	1.4	2.4	1.7	1.4	2.4	1.7	1.4	2.4	1.7	1.4	2.4	1.7	1.4	2.4	1.7	1.4	58°													
56°	2.3	1.6	1.4	2.3	1.6	1.4	2.3	1.6	1.4	2.3	1.6	1.4	2.3	1.6	1.4	2.3	1.6	1.4	56°													
54°	2.2	1.6	1.3	2.2	1.6	1.3	2.2	1.6	1.3	2.2	1.6	1.3	2.2	1.6	1.3	2.2	1.6	1.3	54°													
52°	2.1	1.5	1.3	2.1	1.5	1.3	2.1	1.5	1.3	2.1	1.5	1.3	2.1	1.5	1.3	2.1	1.5	1.3	52°													
50°	2.0	1.5	1.3	2.0	1.5	1.3	2.0	1.5	1.3	2.0	1.5	1.3	2.0	1.5	1.3	2.0	1.5	1.3	50°													
48°	1.9	1.4	1.3	1.9	1.4	1.3	1.9	1.4	1.3	1.9	1.4	1.3	1.9	1.4	1.3	1.9	1.4	1.3	48°													
46°	1.9	1.4	1.2	1.9	1.4	1.2	1.9	1.4	1.2	1.9	1.4	1.2	1.9	1.4	1.2	1.9	1.4	1.2	46°													
44°	1.8	1.4	1.2	1.8	1.4	1.2	1.8	1.4	1.2	1.8	1.4	1.2	1.8	1.4	1.2	1.8	1.4	1.2	44°													
42°	1.7	1.3	1.2	1.7	1.3	1.2	1.7	1.3	1.2	1.7	1.3	1.2	1.7	1.3	1.2	1.7	1.3	1.2	42°													
40°	1.6	1.3	1.2	1.6	1.3	1.2	1.6	1.3	1.2	1.6	1.3	1.2	1.6	1.3	1.2	1.6	1.3	1.2	40°													
38°	1.6	1.3	1.2	1.6	1.3	1.2	1.6	1.3	1.2	1.6	1.3	1.2	1.6	1.3	1.2	1.6	1.3	1.2	38°													
36°	1.5	1.3	1.2	1.5	1.3	1.2	1.5	1.3	1.2	1.5	1.3	1.2	1.5	1.3	1.2	1.5	1.3	1.2	36°													
34°	1.5	1.3	1.2	1.5	1.3	1.2	1.5	1.3	1.2	1.5	1.3	1.2	1.5	1.3	1.2	1.5	1.3	1.2	34°													
32°	1.4	1.3		1.4	1.3		1.4	1.3		1.4	1.3		1.4	1.3		1.4	1.3		32°													
30°	1.4	1.3		1.4	1.3		1.4	1.3		1.4	1.3		1.4	1.3		1.4	1.3		30°													
28°	1.3	1.3		1.3	1.3		1.3	1.3		1.3	1.3		1.3	1.3		1.3	1.3		28°													
26°	1.3	1.2		1.3	1.2		1.3	1.2		1.3	1.2		1.3	1.2		1.3	1.2		26°													
24°	1.3	1.2		1.3	1.2		1.3	1.2		1.3	1.2		1.3	1.2		1.3	1.2		24°													
22°	1.3	1.2		1.3	1.2		1.3	1.2		1.3	1.2		1.3	1.2		1.3	1.2		22°													
20°	1.3	1.2		1.3	1.2		1.3	1.2		1.3	1.2		1.3	1.2		1.3	1.2		20°													
18°	1.3	1.2		1.3	1.2		1.3	1.2		1.3	1.2		1.3	1.2		1.3	1.2		18°													
16°	1.3			1.3			1.3			1.3			1.3			1.3			16°													
组合	22111/12211/11122			22211/12221/11222			22221/12222			22222			33333			组合																

	44.2-61m		36m		9.625m×8.7m		360°		65t																							
	44.2m			48.5m			52.9m			57.2m			61m																			
	36m			36m			36m			36m			36m																			
	0°	15°	30°	0°	15°	30°	0°	15°	30°	0°	15°	30°	0°	15°	30°	0°	15°	30°														
82°	3.1	2.0	1.3	3.1	2.0	1.3	3.1	2.0	1.3	3.1	2.0	1.3	3.1	2.0	1.3	3.1	2.0	1.3	82°													
80°	2.8	1.9	1.2	2.8	1.9	1.2	2.8	1.9	1.2	2.8	1.9	1.2	2.8	1.9	1.2	2.8	1.9	1.2	80°													
78°	2.6	1.8	1.1	2.6	1.8	1.1	2.6	1.8	1.1	2.6	1.8	1.1	2.6	1.8	1.1	2.6	1.8	1.1	78°													
76°	2.4	1.7	1.1	2.4	1.7	1.1	2.4	1.7	1.1	2.4	1.7	1.1	2.4	1.7	1.1	2.4	1.7	1.1	76°													
74°	2.2	1.6	1.1	2.2	1.6	1.1	2.2	1.6	1.1	2.2	1.6	1.1	2.2	1.6	1.1	2.2	1.6	1.1	74°													
72°	2.1	1.5	1.0	2.1	1.5	1.0	2.1	1.5	1.0	2.1	1.5	1.0	2.1	1.5	1.0	2.1	1.5	1.0	72°													
70°	2.0	1.4		2.0	1.4		2.0	1.4		2.0	1.4		2.0	1.4		2.0	1.4		70°													
68°	1.9	1.3		1.9	1.3		1.9	1.3		1.9	1.3		1.9	1.3		1.9	1.3		68°													
66°	1.8	1.2		1.8	1.2		1.8	1.2		1.8	1.2		1.8	1.2		1.8	1.2		66°													
64°	1.7	1.1		1.7	1.1		1.7	1.1		1.7	1.1		1.7	1.1		1.7	1.1		64°													
62°	1.6	1.1		1.6	1.1		1.6	1.1		1.6	1.1		1.6	1.1		1.6	1.1		62°													
60°	1.5	1.0		1.5	1.0		1.5	1.0		1.5	1.0		1.5	1.0		1.5	1.0		60°													
58°	1.4	1.0		1.4	1.0		1.4	1.0		1.4	1.0		1.4	1.0		1.4	1.0		58°													
56°	1.3			1.3			1.3			1.3			1.3			1.3			56°													
54°	1.2			1.2			1.2			1.2			1.2			1.2			54°													
52°	1.2			1.2			1.2			1.2			1.2			1.2			52°													
50°	1.1			1.1			1.1			1.1			1.1			1.1			50°													
48°	1.1			1.1			1.1			1.1			1.1			1.1			48°													
46°	1.0			1.0			1.0			1.0			1.0			1.0			46°													
组合	22111/12211/11122			22211/12221/11222			22221/12222			22222			33333			组合																

起重性能表

Lifting capacities

T 44.2~61m

	44.2-61m T			28m J			9.625m×8.7m			360°			32t			
	44.2m			48.5m			52.9m			57.2m			61m			
	28m			28m			28m			28m			28m			
	0°	15°	30°	0°	15°	30°	0°	15°	30°	0°	15°	30°	0°	15°	30°	
82°	4.8	3.3	2.4	4.8	3.3	2.4	4.8	3.3	2.4	4.8	3.3	2.4	4.8	3.3	2.4	82°
80°	4.5	3.1	2.2	4.5	3.1	2.2	4.5	3.1	2.2	4.5	3.1	2.2	4.5	3.1	2.2	80°
78°	4.3	2.9	2.1	4.3	2.9	2.1	4.3	2.9	2.1	4.3	2.9	2.1	4.3	2.9	2.1	78°
76°	4.1	2.7	2.0	4.1	2.7	2.0	4.1	2.7	2.0	4.1	2.7	2.0	4.1	2.7	2.0	76°
74°	3.9	2.5	1.9	3.9	2.5	1.9	3.9	2.5	1.9	3.9	2.5	1.9	3.9	2.5	1.9	74°
72°	3.7	2.4	1.8	3.7	2.4	1.8	3.7	2.4	1.8	3.7	2.4	1.8	3.7	2.4	1.8	72°
70°	3.5	2.3	1.7	3.5	2.3	1.7	3.5	2.3	1.7	3.5	2.3	1.7	3.5	2.3	1.7	70°
68°	3.3	2.2	1.7	3.3	2.2	1.7	3.3	2.2	1.7	3.3	2.2	1.7	3.3	2.2	1.7	68°
66°	3.1	2.1	1.6	3.1	2.1	1.6	3.1	2.1	1.6	3.1	2.1	1.6	3.1	2.1	1.6	66°
64°	2.9	2.0	1.6	2.9	2.0	1.6	2.9	2.0	1.6	2.9	2.0	1.6	2.9	2.0	1.6	64°
62°	2.7	1.9	1.5	2.7	1.9	1.5	2.7	1.9	1.5	2.7	1.9	1.5	2.7	1.9	1.5	62°
60°	2.5	1.8	1.5	2.5	1.8	1.5	2.5	1.8	1.5	2.5	1.8	1.5	2.5	1.8	1.5	60°
58°	2.4	1.7	1.4	2.4	1.7	1.4	2.4	1.7	1.4	2.4	1.7	1.4	2.4	1.7	1.4	58°
56°	2.3	1.6	1.4	2.3	1.6	1.4	2.3	1.6	1.4	2.3	1.6	1.4	2.3	1.6	1.4	56°
54°	2.2	1.6	1.3	2.2	1.6	1.3	2.2	1.6	1.3	2.2	1.6	1.3	2.1	1.6	1.3	54°
52°	2.1	1.5	1.3	2.1	1.5	1.3	2.1	1.5	1.3	2.1	1.5	1.3	1.8	1.5	1.3	52°
50°	2.0	1.5	1.3	2.0	1.5	1.3	2.0	1.5	1.3	1.7	1.5	1.3	1.5	1.3	1.2	50°
48°	1.9	1.4	1.3	1.9	1.4	1.3	1.8	1.4	1.3	1.5	1.3	1.2	1.2	1.1	1.0	48°
46°	1.9	1.4	1.2	1.9	1.4	1.2	1.5	1.4	1.2	1.2	1.1	1.0	1.0			46°
44°	1.8	1.4	1.2	1.6	1.4	1.2	1.3	1.1	1.1	1.0						44°
42°	1.7	1.3	1.2	1.4	1.2	1.1	1.0									42°
40°	1.6	1.3	1.2	1.1	1.0	1.0										40°
38°	1.4	1.3	1.2													38°
36°	1.2	1.1	1.0													36°
34°	1.0															34°
组合	22111/12211/11122			22211/12221/11222			22221/12222			22222			33333			组合















	44.2-61m T			36m J			9.625m×8.7m			360°			32t			
	44.2m			48.5m			52.9m			57.2m			61m			
	36m			36m			36m			36m			36m			
	0°	15°	30°	0°	15°	30°	0°	15°	30°	0°	15°	30°	0°	15°	30°	
82°	3.1	2.0	1.3	3.1	2.0	1.3	3.1	2.0	1.3	3.1	2.0	1.3	3.1	2.0	1.3	82°
80°	2.8	1.9	1.2	2.8	1.9	1.2	2.8	1.9	1.2	2.8	1.9	1.2	2.8	1.9	1.2	80°
78°	2.6	1.8	1.1	2.6	1.8	1.1	2.6	1.8	1.1	2.6	1.8	1.1	2.6	1.8	1.1	78°
76°	2.4	1.7	1.1	2.4	1.7	1.1	2.4	1.7	1.1	2.4	1.7	1.1	2.4	1.7	1.1	76°
74°	2.2	1.6	1.1	2.2	1.6	1.1	2.2	1.6	1.1	2.2	1.6	1.1	2.2	1.6	1.1	74°
72°	2.1	1.5	1.0	2.1	1.5	1.0	2.1	1.5	1.0	2.1	1.5	1.0	2.1	1.5	1.0	72°
70°	2.0	1.4		2.0	1.4		2.0	1.4		2.0	1.4		2.0	1.4		70°
68°	1.9	1.3		1.9	1.3		1.9	1.3		1.9	1.3		1.9	1.3		68°
66°	1.8	1.2		1.8	1.2		1.8	1.2		1.8	1.2		1.8	1.2		66°
64°	1.7	1.1		1.7	1.1		1.7	1.1		1.7	1.1		1.7	1.1		64°
62°	1.6	1.1		1.6	1.1		1.6	1.1		1.6	1.1		1.6	1.1		62°
60°	1.5	1.0		1.5	1.0		1.5	1.0		1.5	1.0		1.5	1.0		60°
58°	1.4	1.0		1.4	1.0		1.4	1.0		1.4	1.0		1.4	1.0		58°
56°	1.3			1.3			1.3			1.3			1.3			56°
54°	1.2			1.2			1.2			1.2			1.2			54°
52°	1.2			1.2			1.2			1.2			1.1			52°
50°	1.1			1.1			1.1			1.1						50°
48°	1.1			1.1			1.1									48°
46°	1.0			1.0												46°
组合	22111/12211/11122			22211/12221/11222			22221/12222			22222			33333			组合

符号标识

Description of symbols



常规标识

General symbols

	支腿 Outriggers		车桥 Axle
	工作幅度 Radius		行驶速度 Driving speed
	吊臂仰角 Boom position		爬坡能力 Gradability
	吊臂长度 Boom length		轮胎 Tyres
	吊钩 Hook block		平衡重 Counterweight
	360°全回转 360° rotation		上车 Superstructure
	卷扬 Winch		底盘 Chassis

起重作业标识

Crane specific symbols

	主臂 Boom		副臂 Jib
--	------------	---	-----------

注意事项

Notes

1. 表中额定总起重量值，是在平整的坚固地面上本起重机能够保证的最大总起重量，包括吊钩和吊具的重量，所以为了估算重物重量，必须减去上述的装置重量。
2. 表中的工作幅度为起吊重物离地时起重物到起重机回转轴线的水平距离，是包括起重臂变形量在内的实际值，因而起吊前应考虑起重臂变形量。
3. 只允许在5级(风速14.1m/s，风压125N/m²)风以下进行作业。
4. 吊重前操作者必须对物体的重量和工作范围了解后选择合适的作业工况，严禁超出表中的数值。幅度及臂长在相邻两个数值之间时，应依据两个数值中较小值确定起重作业。
5. 应按主臂仰角范围作业，即使是空载，也不应使主臂仰角处于范围外，谨防整机倾翻。
6. 表中的主臂长度应要按照每节臂的伸缩要求进行伸出。

1. The total rated loads given in the rated load charts are the maximum lifting capacity when the crane is set up on firm and level ground, which includes the weight of the hook block and slings. The weight of above-mentioned devices should be deducted to correctly calculate the load weight.
2. The working radius shown in the rated load charts is the radius when the load is lifted off the ground, and it is the actual value including loaded boom deflection.
3. A lifting operation is permissible only when the wind force is below grade 5 (instantaneous wind speed is 14.1 m/s, wind pressure is 125 N/m²).
4. Before beginning lifting operation, the operator should know the weight of the load to be lifted and its working range, and then select proper working conditions. Never operate the crane beyond the limit shown in the chart. Use the lower value from the chart when the boom length or working radius is between the range of values.
5. Observe the boom angle limit. Never operate the crane with the boom angle beyond the recommended limit even if a load is not being carried. Otherwise, the crane will tip.
6. The boom length given in the rated load charts should accord with the telescoping code of boom sections .



地址：中国江苏徐州市铜山路165号

Add : No.165 Tongshan Road Xuzhou Jiangsu China

电话(Tel) : +86-516-83462242/83462350

质量监督电话(Quality Inquiry Tel) : +86-516-87888268

备件电话(Spare Parts Tel) : +86-516-83461542

邮编(Post Code) : 221004

网址(Web) : www.xcmg.com/qizhongji

服务热线 Service Tel

400-110-9999

400-001-5678



本印刷品不属于合同。出于产品不断改进的需要，我们保留对产品型号、参数、配置进行变更的权利，恕不另行通知。图片仅供参考，具体产品以实物为准。图片中产品可能并非标准配置，部分部件可能需要另行购置。办理牌照和上路行驶需遵守当地法规。

This print does not belong to the contract. We reserve the right to modify the design (such as product model, parameters and configuration) without notice for improvement. The pictures are just for reference. The product in the picture may not be standard configuration. Some parts need to be purchased separately. Conform to the local laws for license application and road traveling.