

XCA180 全地面起重机 / All Terrain Crane

技术规格书

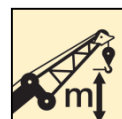
Basic technical specifications



180t



64m



103m

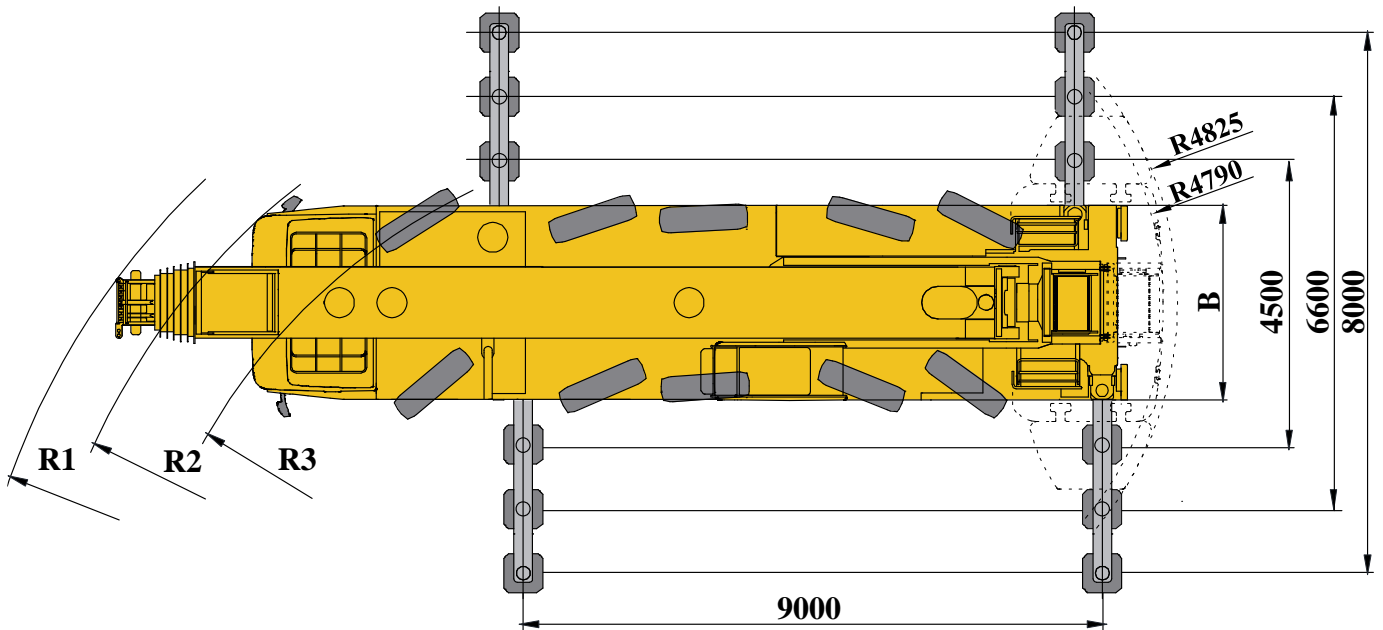
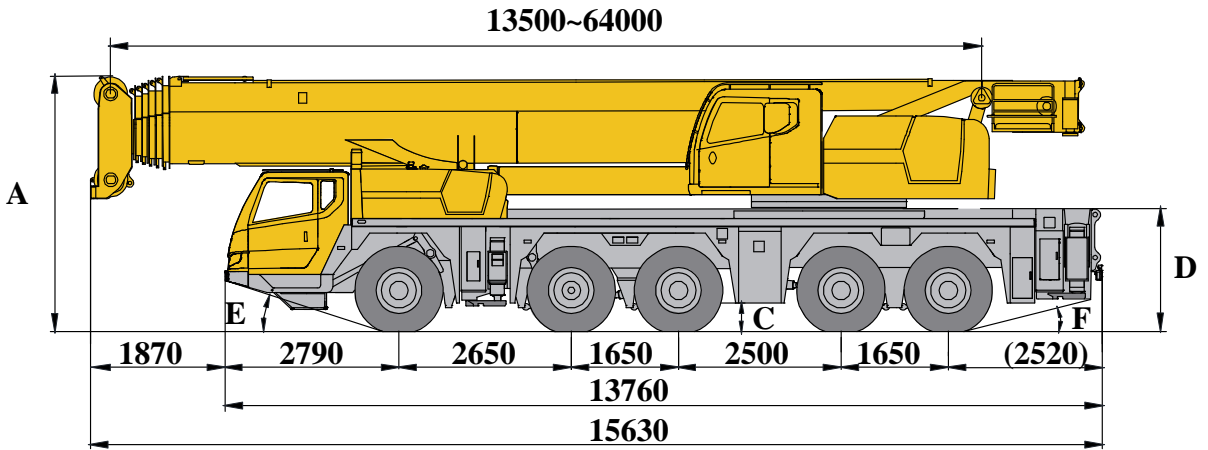



目录

Contents

目录	
Contents	
尺寸参数	3
Dimensions	
技术规格	4-8
Technical specifications	
重量/作业速度	9-10
Weight / Working speeds	
平衡重	11
Counterweight	
运输部件尺寸	12-14
Transportation components dimension	
臂架组合方案	15-16
Boom / Jib combinations	
主臂	17-19
Telescopic Boom	
副臂	20-22
Jib	
主臂加长节	23-24
Telescopic Boom Extension	
符号标识	25
Symbol glossary	
注意事项	26
Notes	


尺寸参数 Dimensions



	A(mm)	B(mm)	C(mm)	D(mm)	E (°)	F (°)	R1	R2	R3
385/95R25 (14.00R25)	3950	2750	330	1905	19	13	12120	11250	9500
445/95R25 (16.00R25)	4000	2750	380	1955	20	14	12120	11250	9500
525/80R25 (20.5R25)	4000	2850	380	1955	20	14	13100	12400	10500


技术规格

Technical specifications

 底盘	配置	
车架	徐工设计、制造，全覆盖式走台板，防扭转箱型结构，高强度钢材制造。 ●	
支腿	双级水平支腿，3种伸缩作业位置（全伸、3/4伸，1/2伸），满足多种作业工况需求。 水平伸缩和垂直伸缩由液压控制，底盘两侧装有电控支腿操纵面板，面板有水平仪显示，支腿附近装有照明灯。垂直支腿带有双向液压锁。 ●	
发动机	MC13.48-50，六缸直列、四冲程、增压中冷、水冷、柴油发动机，额定功率356kW/1900rpm，最大扭矩2300Nm/1050~1400rpm，国五排放标准。 燃油箱容积：460L。 ●	
发动机	MC13.48-30，六缸直列、四冲程、增压中冷、水冷、柴油发动机，额定功率356kW/1900rpm，最大扭矩2300Nm/1050~1400rpm，国三排放标准。 燃油箱容积：460L。 ○	
发动机	OM471LA，六缸直列、四冲程、增压中冷、水冷、柴油发动机，额定功率360kW/1700rpm，最大扭矩2300Nm/1300rpm，StageIV/Tier4F排放标准。 燃油箱容积：460L。 ○	
液压系统	变量开式系统。变量泵通过传动轴连接至发动机后取力口，用于控制支腿、悬挂、电液转向。 ●	
变速箱	自动变速箱，12个前进档，2个倒档，带缓速制动。 ●	
分动箱	德国KESSLER机械式分动箱，装有应急转向油泵，带有PTO接口，可将动力传递到上车作业。 ●	
车桥	断开式高强度车桥，配备气控盘式制动器。 ●	
悬挂	所有车桥均采用独立悬架技术，减震效果好，具有自动调平、悬架升降、弹性刚性转换等功能 ●	
轮胎	10个轮胎，1个备胎。	385/95R25 (14.00R25) ●
		445/95R25 (16.00R25) ○
		525/80R25 (20.5R25) ○
制动	行车制动：双回路气压制动，作用于所有车轮。驻车制动：弹簧储能制动，作用于2-5轴车轮。 辅助制动：发动机排气制动和缓速制动，变速箱缓速制动，安全可靠，延长制动摩擦片使用寿命。 ●	
转向	全桥转向，采用先进的电液比例转向控制技术，可适应多种工况的要求，实现多种转向模式。 ●	
驾驶室	新型复合结构豪华全宽驾驶室，配备电动升降器的安全玻璃、主驾为气悬浮可调式座椅；电加热、电动调节后视镜、可调节高度及角度方向盘，人机交互大屏幕彩色液晶显示器和DVD导航仪等，冷暖一体式空调。 ●	
电气系统	直流24伏特，2个电池串联。 ●	
冷启动装置	用于发动机预热，适应低温环境。 ○	

技术规格

Technical specifications

	上车	配置
结构	徐工设计、制造，高强度钢材制造	●
液压系统	新型全闭式节能液压系统，底盘发动机通过分动箱驱动变量柱塞泵用于起升、变幅、伸缩、回转动作。起升采用变量泵-变量马达的双变量精细调节系统及控制策略，变幅伸缩系统采用变量泵-液压缸容积调速系统，微动性、平顺性优，能量损耗小。	●
操纵方式	电液比例操纵，无级调速，由左右2个操纵手柄控制起重机的主要动作。	●
起升机构	双折线绳槽卷筒，由液压马达驱动，内置行星齿轮减速器和常闭式制动器，并带有平衡阀。钢丝绳端带绳头，直接安装于索套内，提高了更换速度，方便快捷。 主、副起升机构独立操作。	主卷 ●
		副卷 ○
回转机构	单排四点接触球外齿式回转支承，由液压马达驱动，内置行星齿轮减速器和常闭式制动器，可连续回转360°，具有动力控制或自由滑转的功能，可无级调速。	●
操纵室	新型钢制操纵室，装有前景窗，安全玻璃，车窗装有遮阳板，推拉式车门，操纵员座椅靠背可倾斜定位，操纵杆安装在座椅两侧的扶手台上。带推拉踏板。前窗、顶窗装有雨刮器。操纵室内采用人机交互系统控制面板。操纵室可向上翻转约20°，冷暖空调。	●

安全装置	液压平衡阀、液压溢流阀、液压双向锁、力矩限制器；三圈保护器，防止钢丝绳过放；臂头设置高度限位，防止钢丝绳过卷；风速仪，检测高空风速；卷扬监视装置，实时监控卷扬状态。	●
力矩限制器	当实际力矩接近过载时，发出听觉视觉警报，并在过载之前自动停止危险动作。具有超载记忆功能（黑匣子）和故障自诊断功能。	●
组合配重	总重54t，有3.6t、8.5t、18.7t、23.2t、28.1t、33t、54t共7个配重组合作方式。	●
电气系统	直流24伏特，2个电池串联。	●
集中润滑系统	电脑编程控制，集中润滑点为回转支承、主副起升机构轴承座、变幅油缸上下铰点、操纵室翻转油缸铰点、起重臂后铰点。	●
吊钩	11t吊钩	○
	30吨吊钩	●
	65t吊钩	●
	100t吊钩	●
	180t吊钩	○
无线遥控	起重作业动作控制	○

 臂架系统	配置
主臂 主臂长度：13.5m~64m。 6节，卵圆形截面的筒形焊接结构。新型单缸插销伸缩系统，1个装有安全阀的双作用的伸缩油缸，控制每节臂的伸缩，多种伸缩模式可供选择。	●
副臂 副臂长度：11m/18.5m 两节侧置挂接桁架结构副臂，具有0°、20°、40°三种固定副臂安装角 无级变幅	● ○
加长节 3节主臂加长节	7m加长节 ○ 7m加长节 ○ 7m加长节 ○
附加滑轮 主臂2个附加滑轮	○
独立臂头 2.9m独立臂头	○
臂端单滑轮 单滑轮,安装在主臂顶端用于单股钢丝绳起重作业。起重性与主臂相同，但最大起重量不超过7000kg	●


产品各部件明细如上所述，具体部件明细请参照产品报价单

符号说明：

- —— 表示标准配置；
- —— 表示选装配置。


技术规格


Technical specifications

	Chassis	
Frame	Designed and manufactured by XCMG, it is made of high strength steel with fully covered walking surface and anti-torsion box-typed structure.	●
Outrigger	2-stage outrigger beams, and 3 telescoping positions (fully-extended, 3/4 extended, half-extended) are available to meet different working conditions. Four outriggers are hydraulically controlled by control levers. There is an outrigger control station located at each side of the chassis. Level gauge indicator is equipped. Illuminators are equipped besides each outrigger. There is a double-way hydraulic valve fitted in each jack cylinder.	●
Engine	MC13.48-50, in line, six-cylinder, four-stroke, water cooled, supercharging intercooler, diesel engine, with rated power of 356kW/1900rpm, and the max. torque of 2300Nm/1050~1400rpm, compliant with China V emission standard. Fuel tank capacity: 460L.	●
Engine	MC13.48-30, in line, six-cylinder, four-stroke, water cooled, supercharging intercooler, diesel engine, with rated power of 356kW/1900rpm, and the max. torque of 2300Nm/1050~1400rpm, compliant with China III emission standard. Fuel tank capacity: 460L.	○
Engine	OM471LA, in line, six-cylinder, four-stroke, water cooled, supercharging intercooler, diesel engine, with rated power of 360kW/1700rpm, and the max. torque of 2300Nm/1300rpm, compliant with Stage IV/ Tier 4F emission standard. Fuel tank capacity: 460L.	○
Hydraulic system	Open variable-displacement system. Variable-pump is connected to the rear PTO hole of the engine to control the outriggers, suspension and electro-hydraulic steering.	●
Transmission	Automatic control gearbox with retarder brake; 12 forward gears and 2 reverse gears available.	●
Transfer case	German KESSLER mechanical transfer gear is equipped with emergency steering pump and PTO port to transfer power to the superstructure.	●
Axles	Disconnected high strength axle with reliable performance, equipped with pneumatically controlled disc brake.	●
Suspensions	Independent suspension is adopted for all axles, providing good shock absorbing effect. Functions of automatic leveling, suspension lifting, elastic/rigid state switch-over, etc. are available.	●
Tires		385/95R25 (14.00R25) ● 445/95R25 (16.00R25) ○ 525/80R25 (20.5R25) ○
Brakes	Service brake: double-circuit air pressure brake acting on all wheels. Parking brake: spring brake with energy accumulation, acting on wheels of axles 2-5; Auxiliary brake: engine exhaust brake and retarder brake, transmission retarder brake, safe and reliable, and will prolong the service life of brake lining.	●
Steering	All axles steering, advanced technology of electro-hydraulic proportional steering control is suitable for various demands of working conditions and several steering modes can be realized.	●
Driver's cab	New full dimension steel structure cab, equipped with safety glass, electrically operated door window lifter, electric heating and adjustable mirrors, steering wheel adjustable in height and angle, man-machine interactive large screen liquid crystal display, DVD navigator, heater and air-conditioner, etc. An air suspension seat is supplied for driver.	●
Electrical system	DC 24 V, two batteries in series.	●
Cold weather starting device	It is used for engine preheating in order to adapt to the low temperature environment.	○

技术规格

Technical specifications

 Superstructure		
Frame	Designed and manufactured by XCMG, made of high strength steel.	●
Hydraulic system	New fully closed hydraulic system is adopted; a variable plunger pump driven by transfer gear of the chassis engine for lifting, elevating, telescoping, slewing operations. Winch system adopts the double-variable fine control adjusting system and control strategies with variable pump-variable motor; the elevating and telescoping system adopts the variable pump-hydraulic cylinder volume speed adjusting system. Fine control, good smoothness and small energy consumption can be realized.	●
Operating mode	The electric-proportional operation system is equipped with two levers at left and right sides controlling the main movements of the crane, and stepless slewing speed regulation is available.	●
Winch system	<p>Drum with Lebus grooves, driven by a hydraulic motor, with build-in planetary gear reducer, constant closed brake and balance valve. Wire rope has a rope head, which is directly installed in pouch socket. Time for replacing wire rope is shortened, the replacement is easy and fast. The main winch and auxiliary winch can be individually operated.</p>	Main winch ●
		Auxiliary winch ○
Slewing system	A single-row, four-point contact-ball external toothed slewing bearing is driven by hydraulic motor, with built-in planetary gear reducer and constant-closed brake equipped, and may continuously slew 360°. Power control and free slewing function as well as stepless speed regulation are available.	●
Operator's cab	New steel cab is equipped with a front window. Safety glass and sun shield are used for windows. A sliding door is equipped. Standard controls and indicators are ergonomically arranged in the cab. The cab features a new ergonomic seat design with backrest adjustment and armrests with joysticks fitted. A pull-out step is available. Wipers are fitted for the windshield and roof window. Control panel with man-machine interactive system is used in operator's cab. The cab can be tilted up to 20°. Heater and air conditioner are available.	●
Safety device	Hydraulic counterbalance valve, hydraulic relief valve, hydraulic double-way valve and LMI are available. Lowering limiter is equipped in winch to prevent rope over-releasing. Anti-two block is fitted on the boom head to prevent rope over-winding. Anemometer is equipped to check whether aerial wind velocity is in safe working range. Winch monitor is for real-time monitoring of winch running.	●
LMI	When the actual load moment is approaching overloading value, audible warning will be sent out, and the dangerous operation will be automatically stopped ahead of overloading. Overload memory function (black box) and fault self-diagnosis function are available.	●
Combined counterweight	Total weight is 54 t. 7 counterweight combinations of 3.6t, 8.5t, 18.7t, 23.2t, 28.1t, 33t and 54t are available.	●
Electrical system	DC 24 V, two batteries in series.	●
Centralized lubrication system	Controlled by computer program; lubrication points are at slewing ring, bearing pedestals of main winch and auxiliary winch, upper and lower pivots of elevating cylinder, pivot of tilt cylinder and rear pivot of boom.	●
Hook block	11t Hook block	○
	30t Hook block	●
	65t Hook block	●
	100t Hook block	●
	180t Hook block	○
Wireless remote control	Controlling lifting operation .	○

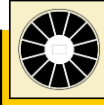
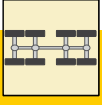
 Boom and jib system			
Boom	Boom length: 13.5m~64m. 6-section boom with oval cross-section, welding structure. New single-cylinder pinning telescoping system is adopted. One double-acting cylinder with safety valve is used for controlling the telescoping movements of all boom sections with various telescoping pattern available.		●
Jib	Jib length: 11m~18.5m Two lattice swing-away jib sections. There are three jib offset angles of 0° , 20° and 40° .		●
	Stepless luffing		○
Extension	Boom extension	7m extension	○
		7m extension	○
		7m extension	○
Additional sheave block	Two additional sheave blocks attached on the boom		○
Independent jib head	Independent jib head of 2.9m		○
Single top	Fitted at boom head, used for single line operation. Its lifting performance is the same as that for boom, but the maximum lifting load does not exceed 7000kg.		●

Product parts list is as mentioned above. Please refer to the product quotation for specific parts.

Symbol explanation:

- —it means the standard configuration;
- —it means the optional configuration.

重量 Weight



							总重量 Total weight	整机宽度 Overall Width
12	10×8×10	385/95 R25	×	×	×	×	55t	2750
12	10×8×10	445/95 R25	30t	3.6	×	×	60t	2750
12	10×8×10	445/95 R25	65t	×	18.5m	√	60t	2820
16.5	10×8×10	445/95 R25	65t	23.2	18.5m	√	82.5t	2820



吊钩最大吊重量 Max. lifting capacity of the hook block	倍率 Parts of line	产品额定吊重量 Rated lifting capacity	备注 Remarks
180t	14	128t	双钩 Double hook
100t	10	94t	双钩 Double hook
65t	7	65t	双钩 Double hook
30t	3	30t	单钩 Single hook
11t	1	10t	单钩 Single hook

作业速度

Working speeds



385/95 R 25 (14.00 R 25)
 445/95R25(16.00R25)
 525/80R25(20.5R25)

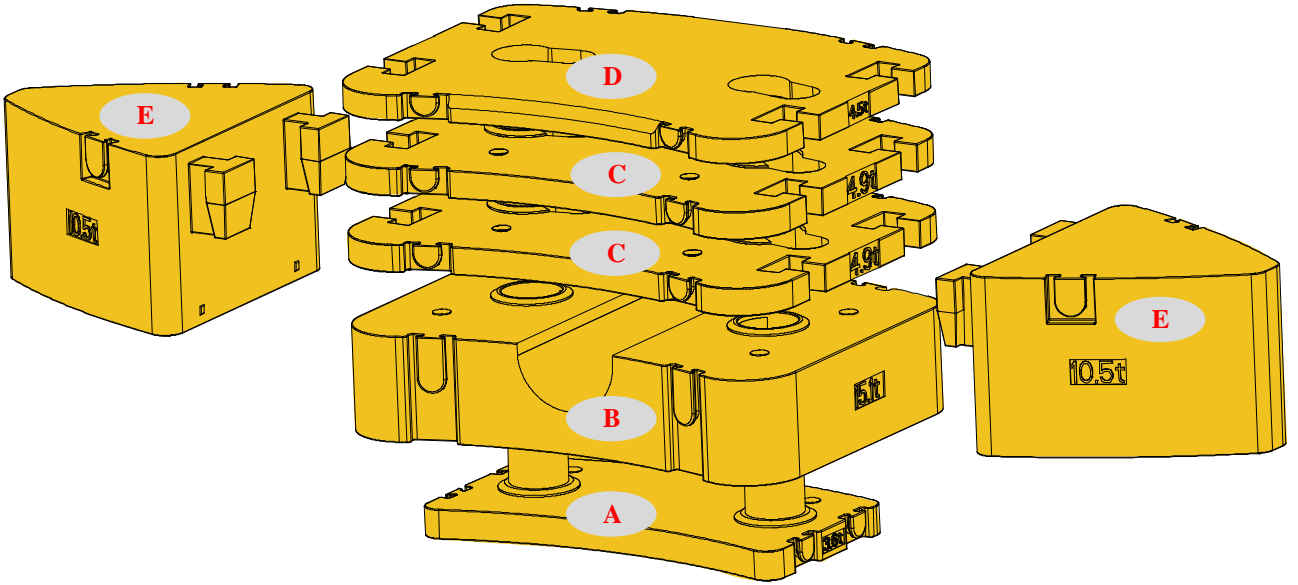
2 ~ 80

65%
 60%



作业机构 Drive	作业速度 Working speed	最大单绳拉力 Max. single line pull	钢丝绳直径/长度 Rope diameter/ length
	0-135 m/min, 单绳, 第四层 m/min, single line, 4th layer	101 kN	22 mm/315 m
	0-135 m/min, 单绳, 第四层 m/min, single line, 4th layer	101 kN	22 mm/215 m
	0-1.5 r/min		
	从0°抬起至82°约60s Approx. 60s for boom elevation from 0° to 82°		
	从13.5m伸出至64m约550s Approx. 550s for boom extension from 13.5m to 64m		

平衡重 Counterweight



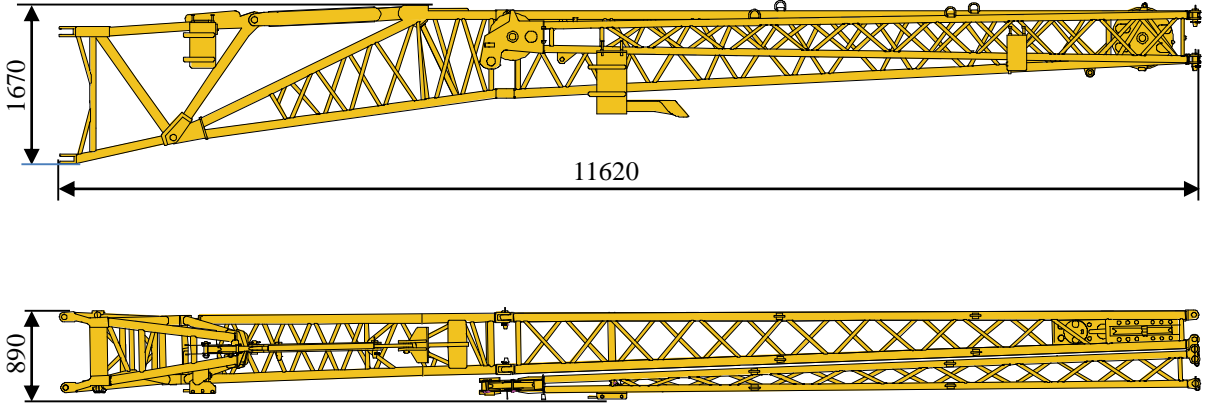
平衡重 Counterweight	A	B	C	D	E
重量 t Weight (t)	3.6	15.1	4.9	4.5	10.5

工况模式 Working mode	3.6t	8.5t	18.7t	23.2t	28.1t	33t	54t
组合形式 Combinations	A	A+C	A+B	A+B+D	A+B+C+D	A+B+C+C+ D	A+B+C+C+ D+E+E

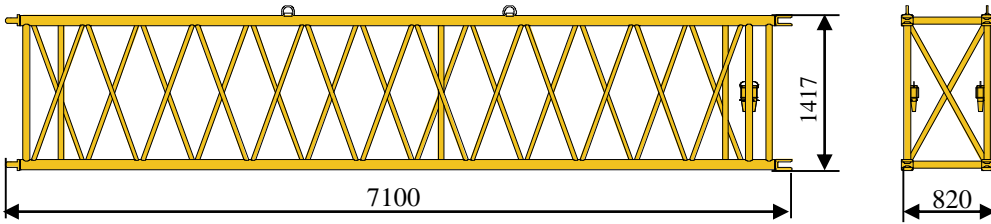
运输部件尺寸

Dimension of transported components

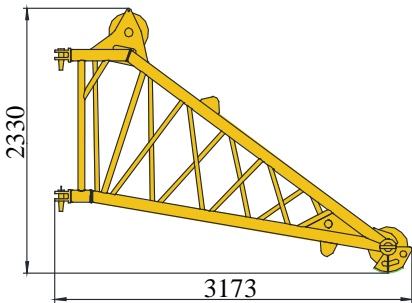
副臂及支架 2407kg
Jib and the bracket 2407kg



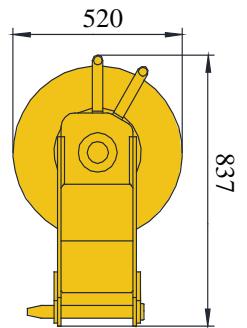
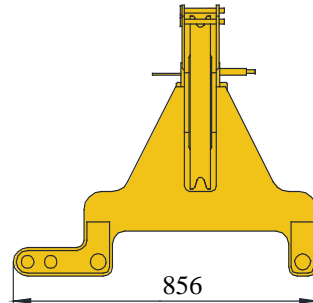
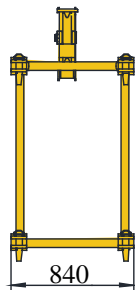
主臂加长节 660kg
Boom extension 660kg



独立臂头 468kg
Independent jib head 468kg



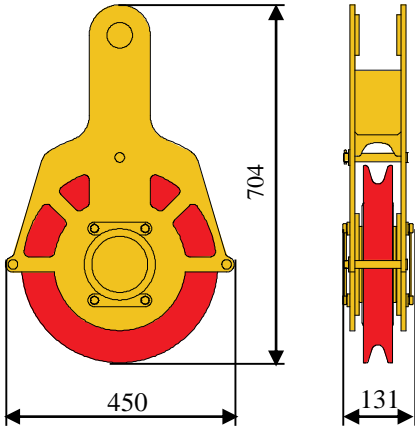
臂端单滑轮 42kg
Single top 42kg



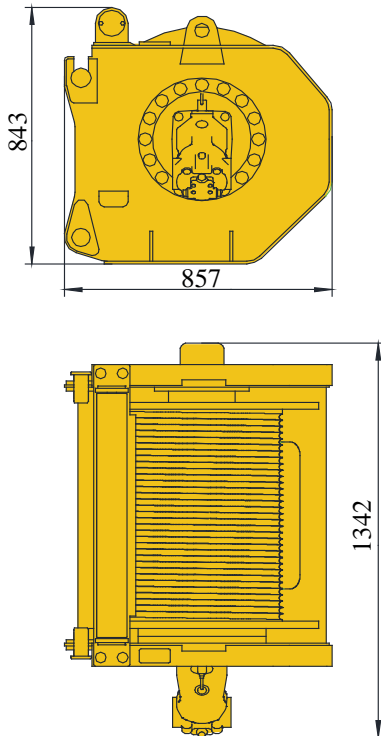
运输部件尺寸

Dimension of transported components

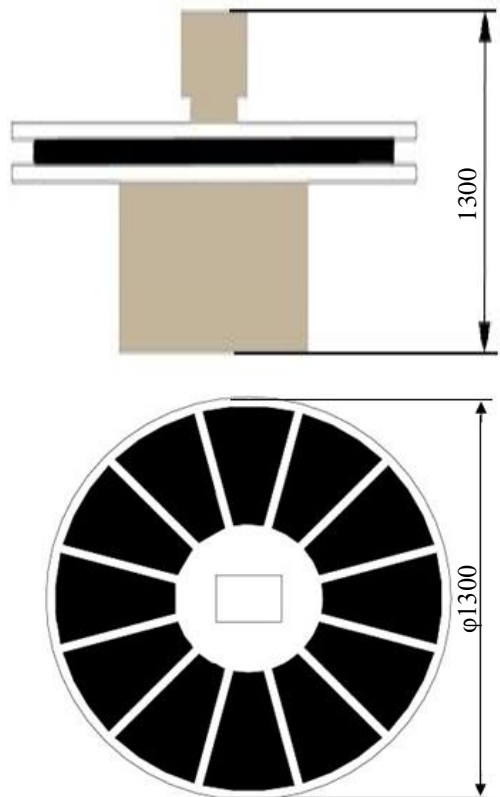
附加滑轮 42kg
Additional sheave block 42kg



副起升机构 (含钢丝绳) 1409kg
Auxiliary winch (rope included) 1409kg



无级变幅卷筒 280kg
Stepless luffing drum 280kg

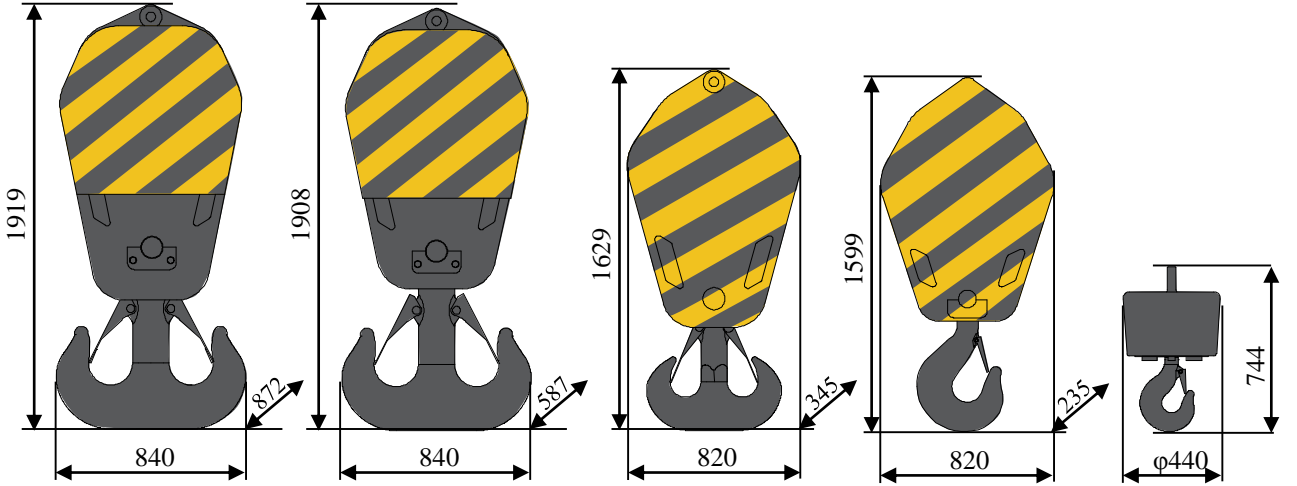


运输部件尺寸

Dimension of transported components

起重钩 4265kg

Hook block 4265kg



180t钩 Hook block
1600kg

100t钩 Hook block
1260kg

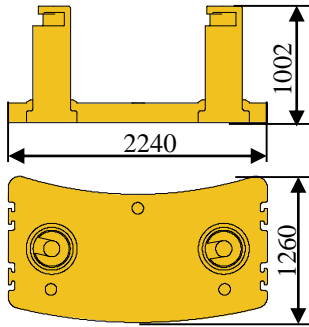
65t钩 Hook block
692kg

30t钩 Hook block
417kg

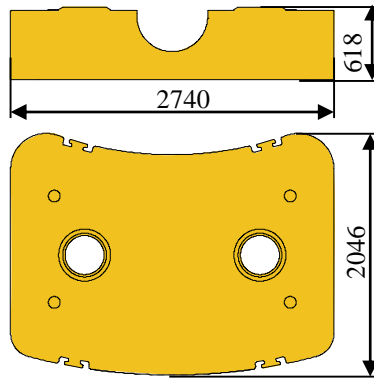
11t钩 Hook block
296kg

平衡重 54000kg (A+B+B+C+C+D+E+E)

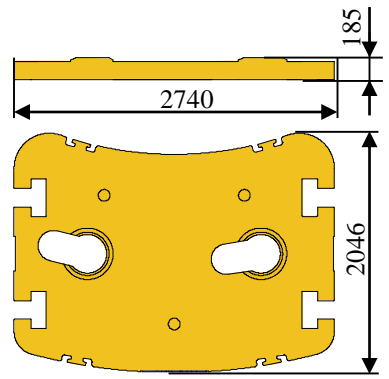
Counterweight 54000kg (A+B+B+C+C+D+E+E)



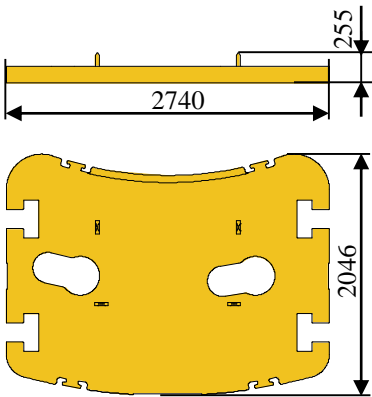
A 3600kg



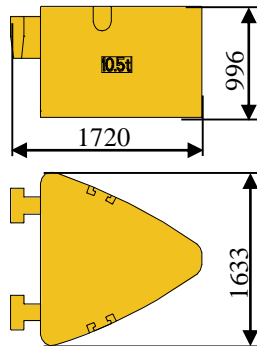
B 15100kg



C 4900kg



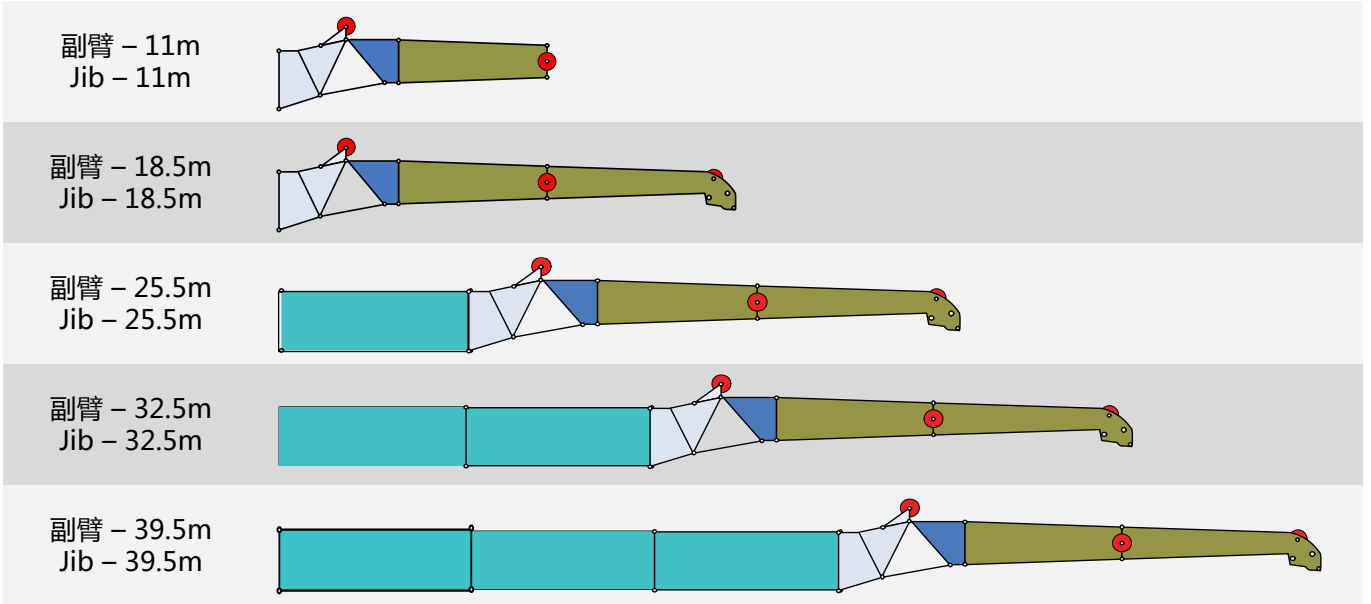
D 4500kg



E 10500kg

臂架组合方案

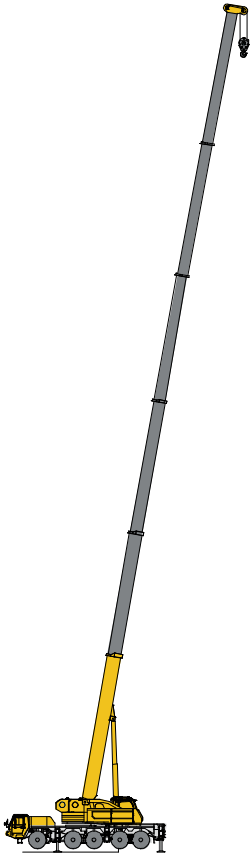
Boom / Jib combinations



部件 Component	结构形式 Structure	尺寸 (长×宽×高) mm Size (L×W×H) (mm)	重量 kg Weight (kg)
连接架 Connecting bracket		2065×1950×820	375
旋转架 Rotating bracket		3510×1411×695	395
主臂加长节 Telescopic boom extension		7100×1417×820	660
一节副臂总成 First jib section assembly		7130×945×630	668
二节副臂总成 Second jib section assembly		7360×608×450	360

臂架组合方案

Boom / Jib combinations



主臂(T)
Telescopic Boom

T : 13.5m~64m



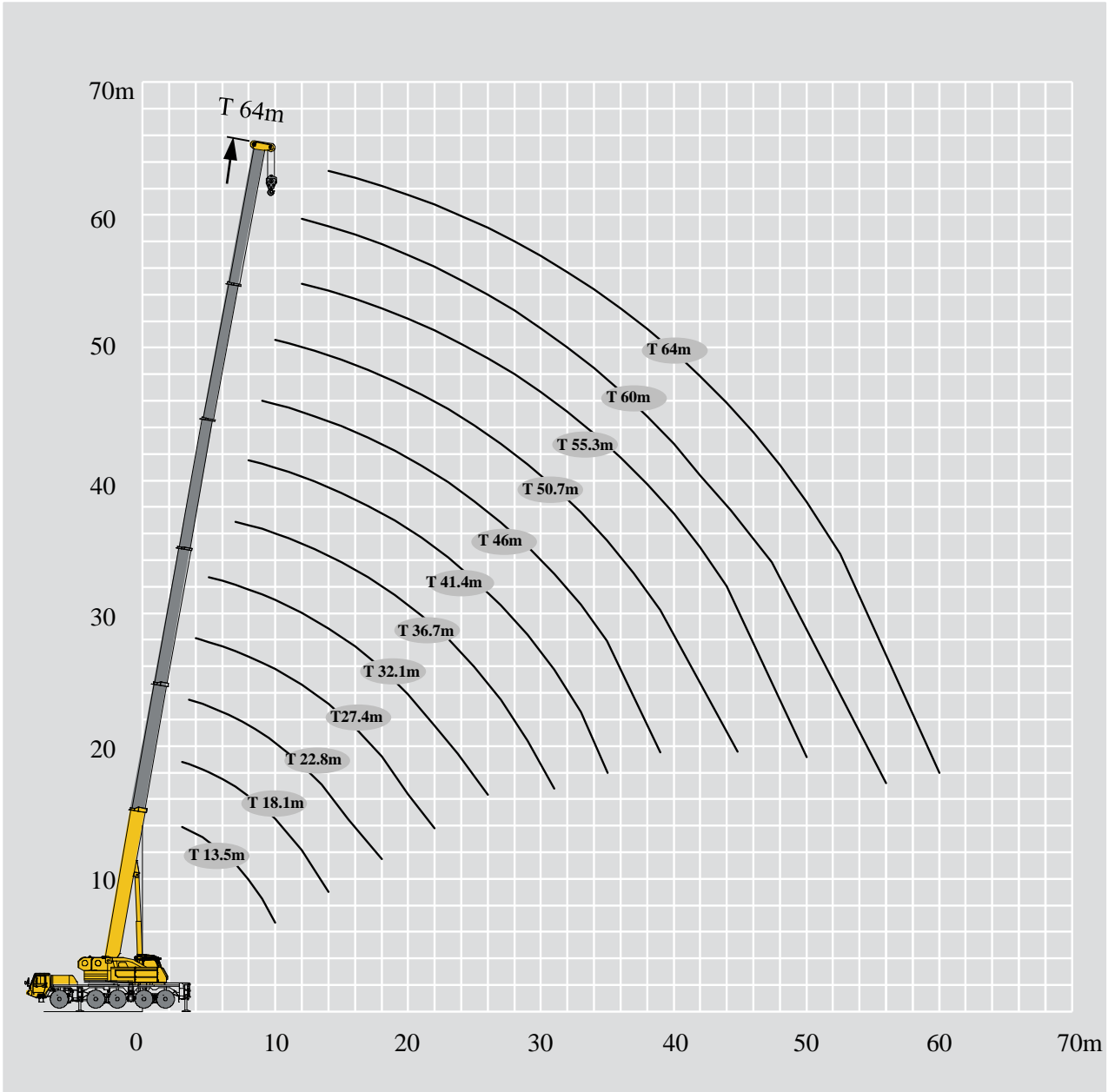
副臂(J)
Jib

T : 13.5m~64m
J : 11m~18.5m



主臂加长节(TE)
Telescopic Boom Extension


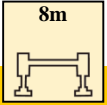



T : 60m~64m
E : 3×7m
J : 11m~18.5m



起重性能表

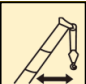


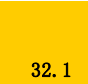


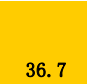
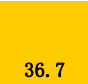
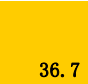

Lifting capacities

T 13.5~36.7m

									
	13.5	18.1	18.1	18.1	22.8	22.8	22.8		
3	180**	94.0	94.0	63.5	94.0	94.0	67.9	3	
3.5	128*	94.0	94.0	61.4	94.0	94.0	64.4	3.5	
4	125*	94.0	94.0	58.1	94.0	94.0	61.1	4	
4.5	116*	94.0	94.0	55.2	94.0	94.0	58.5	4.5	
5	109*	94.0	94.0	52.5	94.0	94.0	56.0	5	
6	94	93.0	94.0	47.8	91.0	92.0	51.9	6	
7	81.6	81.6	82.2	44.4	81.0	82.0	48.2	7	
8	70.3	70.4	71.1	41.9	70.2	71.3	45.1	8	
9	61.6	61.7	62.4	38.3	61.5	62.6	42.3	9	
10	54	54.8	55.4	36.5	54.5	55.6	39.7	10	
12		44.3	44.9	32.8	44.1	45.1	35.8	12	
14		36.7	37.4	30.1	36.5	37.6	32.5	14	
16					30.9	31.9	29.3	16	
18					25.3	26.6	26.7	18	
20					18.0	19.0	20.0	20	
组合 Code	00000	01000	00100	00001	11000	01100	00011	组合 Code	

备注：**为最大名义载荷，*需使用主臂附加滑轮

Notes: ** means capacity class; * means that it needs the additional sheave block for boom.

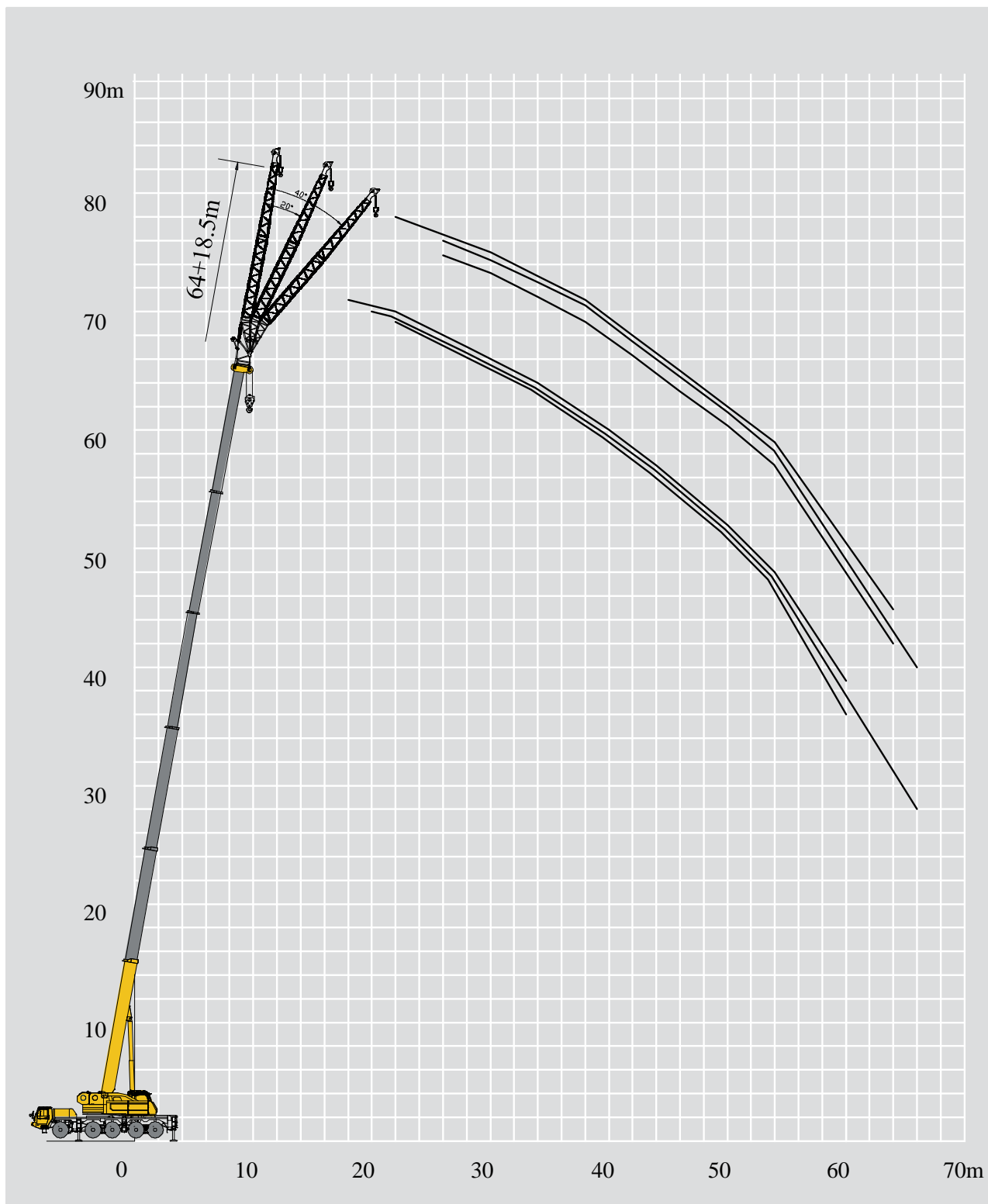
										
	27.4	27.4	27.4	32.1	32.1	32.1	36.7	36.7	36.7	
4	85.0	83.5	62.0							4
4.5	85.0	78.7	59.5							4.5
5	85.0	74.3	57.0	77.0	60.9	52.1				5
6	85.0	66.7	53.3	77.0	57.1	48.5	65.0	58.7	54.4	6
7	80.0	60.5	49.6	77.0	53.7	43.6	61.1	56.1	49.7	7
8	71.0	55.4	46.5	71.8	50.7	39.9	56.1	53.0	45.6	8
9	62.3	50.9	44.0	63.1	48.1	37.1	51.8	50.7	42.0	9
10	55.3	47.1	41.6	56.1	45.5	33.9	47.6	48.0	39.0	10
12	44.8	41.1	37.7	45.6	41.7	29.3	41.4	44.1	33.9	12
14	37.3	36.2	34.4	38.1	38.1	27.2	36.3	38.9	29.7	14
16	31.6	32.1	31.8	32.4	33.7	23.1	31.5	33.2	26.5	16
18	26.2	26.8	27.8	27.2	28.7	21.2	26.8	28.1	23.9	18
20	22.0	22.5	24.5	22.9	24.4	19.3	22.6	23.8	21.7	20
22	18.7	19.2	21.2	19.6	21.0	17.6	19.2	20.5	19.8	22
24	16.0	16.5	18.5	16.9	18.3	16.6	16.6	17.8	18.2	24
26				14.7	16.1	15.7	14.4	15.6	16.0	26
28				12.9	14.3	14.6	12.6	13.8	14.2	28
30							11.1	12.2	12.6	30
32							9.8	10.9	11.3	32
组合 Code	11100	02100	00111	11110	01111	00211	21110	11111	02111	组合 Code

起重性能表

Lifting capacities

T 41.4~64m



	41.4~64m		8m		360°		54t								
	41.4	41.4	41.4	46	46	46	50.7	50.7	50.7	55.3	55.3	60	64		
7	55.9	49.4	36.8												7
8	52.9	46.6	34.6	44.9	36.4	28.3									8
9	49.0	43.7	32.8	42.2	35.7	27.0	26.9	26.4	24.8						9
10	45.5	40.8	31.2	37.8	34.9	25.9	26.9	26.3	24.8	21.5	20.5				10
12	39.4	35.7	28.3	32.9	30.4	23.2	26.9	26.0	23.8	21.2	20.3	16.9	13.7		12
14	34.4	31.3	25.6	29.1	27.2	21.5	25.4	23.5	22.0	20.0	20.1	16.6	13.4		14
16	31.0	27.8	23.8	25.3	23.9	19.7	22.3	20.8	20.1	19.4	19.9	16.2	13.1		16
18	27.3	25.2	22.0	22.5	21.1	17.8	19.6	18.6	18.3	18.1	18.0	15.8	12.7		18
20	23.4	22.8	20.8	21.0	19.6	16.7	17.7	16.6	17.2	16.4	16.1	15.2	12.3		20
22	20.1	20.4	19.1	18.4	17.9	15.2	16.3	15.2	15.7	15.2	14.8	13.5	11.8		22
24	17.4	17.7	18.2	17.0	16.0	14.1	14.8	13.8	14.7	13.3	13.2	12.2	11.1		24
26	15.2	15.6	16.3	15.2	15.0	13.1	13.4	12.9	13.8	12.3	12.3	11.2	10.0		26
28	13.4	13.7	14.4	13.4	13.9	12.9	12.4	12.0	12.8	11.3	11.2	10.3	9.1		28
30	11.9	12.2	12.9	11.9	12.4	12.1	11.4	11.0	11.7	10.5	10.6	9.8	8.6		30
32	10.5	10.9	11.6	10.5	11.1	11.1	10.4	10.0	10.7	10.1	9.9	9.2	7.9		32
34	9.4	9.7	10.4	9.4	9.9	10.3	9.4	9.3	10.5	9.1	9.0	8.3	7.2		34
36	8.4	8.7	9.4	8.4	8.9	9.7	8.6	8.9	9.7	8.4	8.5	8.1	6.7		36
38	7.5	7.8	8.5	7.5	8.0	8.8	7.7	8.2	8.6	7.9	7.8	7.3	6.2		38
40				6.7	7.2	8.0	6.9	7.6	8.1	6.9	7.4	6.8	5.8		40
42				6.0	6.5	7.3	6.2	6.9	7.4	6.6	7.0	6.2	5.3		42
44							5.6	6.2	6.8	5.9	6.7	5.8	5.1		44
46							5.0	5.7	6.2	5.4	6.0	5.5	4.7		46
48										4.8	5.6	4.9	4.5		48
50										4.4	5.1	4.6	4.2		50
52												4.3	3.9		52
54												3.8	3.6		54
56												3.0	3.4		56
58													3.2		58
60													2.8		60
组合 Code	21111	12111	11112	22111	12211	11122	22211	12221	11222	22221	12222	22222	33333	组合 Code	



起重性能表

Lifting capacities



J 24.6~75m

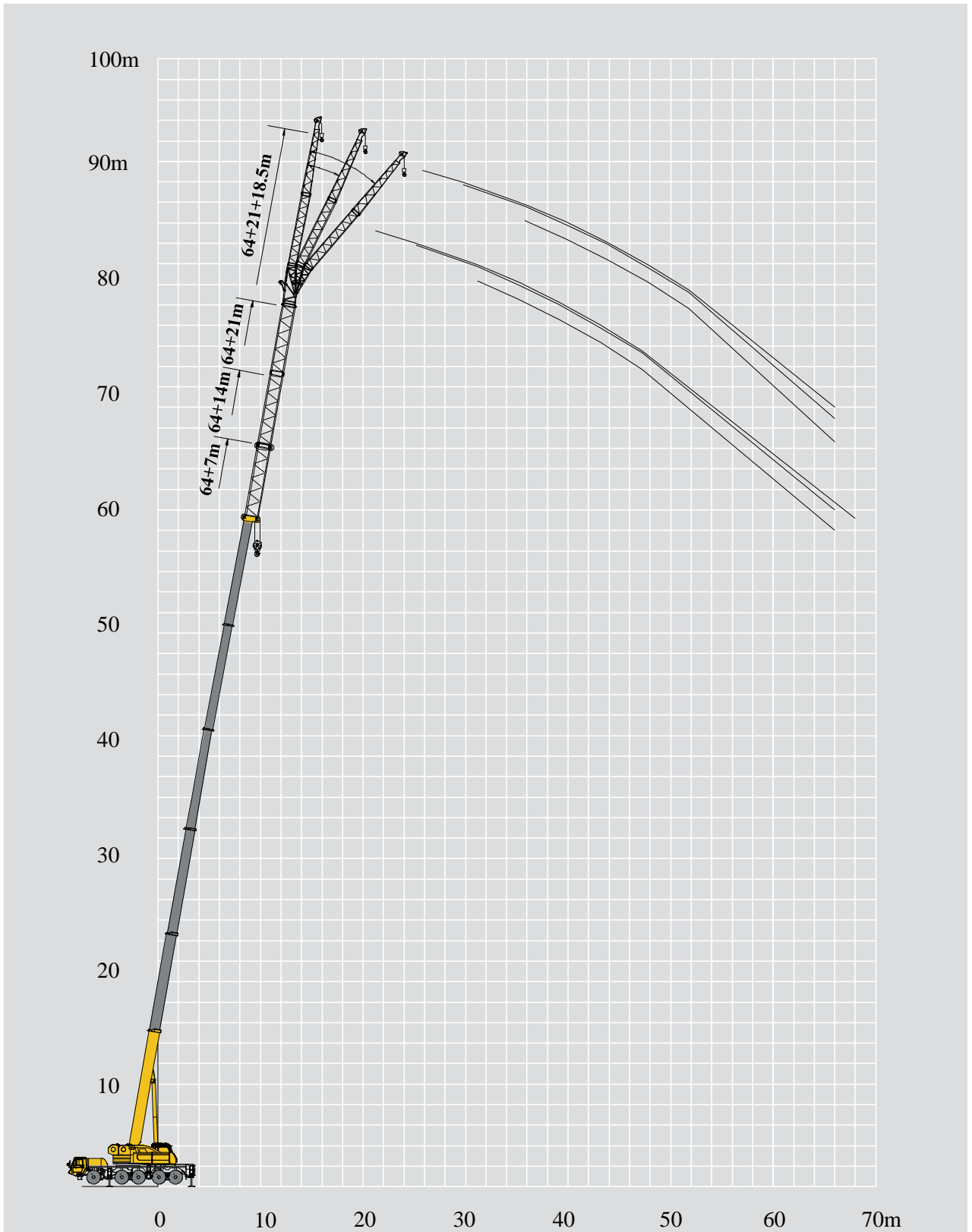
	13.5			41.4			55.3			60			64			
	0°	20°	40°	0°	20°	40°	0°	20°	40°	0°	20°	40°	0°	20°	40°	
5	18.0															5
6	17.5															6
7	16.5	11.2														7
8	15.2	10.2														8
9	14.0	9.2	5.4	16.8												9
10	13.2	8.2	5.4	16.8												10
12	11.8	7.1	5.4	16.5	11.0											12
14	10.3	6.1	4.9	16.3	10.3		11.3			9.9						14
16	8.8	5.1	4.4	15.5	10.1	5.4	11.3	9.3		9.9			7.3			16
18	6.5	5.0	4.4	15.3	9.1	5.4	11.3	9.3	5.0	9.9	8.6		6.8	6.7		18
20		4.5	4.4	14.9	8.1	5.2	11.7	9.3	5.0	9.9	8.6	4.8	6.5	6.3		20
22				14.5	7.3	4.9	11.8	8.4	5.0	9.9	8.4	4.8	6.2	6.0	4.5	22
24				13.0	7.1	4.9	11.4	8.3	5.0	9.9	8.1	4.8	5.9	5.8	4.5	24
26				12.4	6.3	4.9	10.4	7.5	4.8	8.9	8.1	4.8	5.6	5.4	4.5	26
28				11.5	6.2	4.9	9.3	7.3	4.5	8.9	7.1	4.8	5.0	4.8	4.5	28
30				10.4	5.8	4.7	8.8	6.4	4.5	7.9	7.1	4.8	4.8	4.6	4.5	30
32				9.3	5.7	4.4	8.4	6.3	4.5	6.9	6.6	4.5	4.6	4.4	4.5	32
34				8.7	5.3	4.4	7.2	6.3	4.5	6.9	6.6	4.5	4.4	4.3	4.5	34
36				8.3	5.2	4.4	6.8	5.9	4.5	5.9	5.8	4.5	4.4	4.2	4.5	36
38				7.8	4.8	4.4	6.1	5.8	4.5	5.8	5.6	4.5	3.9	3.7	4.5	38
40				7.0	4.6	4.4	5.8	5.4	4.5	5.3	5.0	4.5	3.7	3.6	4.5	40
42				6.3	4.3	4.4	5.4	5.3	4.5	4.9	4.8	4.5	3.7	3.6	4.2	42
44				5.7	4.3		5.3	4.8	4.5	4.7	4.5	4.4	3.5	3.4	4.1	44
46							4.3	4.3	4.5	4.1	4.3	4.3	3.4	3.2	3.4	46
48							4.3	4.3	4.4	3.9	3.9	3.8	3.3	3.2	3.2	48
50							4.2	4.1	3.9	3.5	3.8	3.8	2.9	2.7	3.2	50
52							3.7	3.8	3.6	3.4	3.3	3.3	2.7	2.7	2.8	52
54							3.3	3.5		2.9	3.3	3.1	2.4	2.3	2.7	54
56							3.0	3.1		2.9	2.8	2.8	2.4	2.3	2.2	56
58								2.7		2.8	2.6		2.0	2.0	2.2	58
60										2.4	2.3		1.9	1.8	2.1	60
62											2.3		1.9	1.8		62
64													1.4	1.2		64
66														1.2		66
组合 Code	00000			21111			22221			22222			33333			组合 Code

起重性能表

Lifting capacities

J 32~82.5m

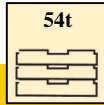
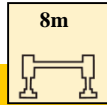
	13.5			41.4			55.3			60			64			
	0°	20°	40°	0°	20°	40°	0°	20°	40°	0°	20°	40°	0°	20°	40°	
5	8.0															5
6	8.0															6
7	7.9															7
8	7.8															8
9	7.6															9
10	7.2	4.1														10
12	6.2	3.6		6.9												12
14	5.2	3.1		6.9			5.4									14
16	4.6	3.0	2.3	7.1	4.0		5.4			4.7						16
18	4.1	2.6	2.0	7.1	3.8		5.4			4.7			4.4			18
20	3.6	2.5	2.0	7.1	3.5		5.4	4.0		4.7			4.4			20
22	3.3	2.3	1.8	6.6	3.4	2.3	5.6	3.8		4.9	4.0		4.4			22
24	3.0	2.0	1.8	6.2	3.2	2.1	5.6	3.5		5.0	3.5		4.5	3.9		24
26	2.8	2.0	1.8	5.7	3.0	2.0	5.6	3.4	2.3	5.0	3.5	2.3	4.6	3.6		26
28		1.9		5.1	2.9	2.0	5.8	3.3	2.1	5.0	3.3	2.1	4.6	3.5	2.2	28
30				4.6	2.7	2.0	5.9	3.2	2.0	5.2	3.3	2.0	4.6	3.4	2.0	30
32				4.4	2.5	1.9	5.7	2.9	2.0	5.2	3.1	2.0	4.6	3.2	2.0	32
34				4.1	2.5	1.9	5.2	2.8	2.0	5.2	3.0	2.0	4.7	3.0	2.0	34
36				3.9	2.4	1.9	4.8	2.7	2.0	5.2	2.8	2.0	4.9	3.0	2.0	36
38				3.6	2.3	1.8	4.5	2.5	1.9	4.9	2.8	2.0	4.9	2.8	2.0	38
40				3.4	2.3	1.8	4.3	2.5	1.9	4.6	2.6	1.9	4.3	2.8	2.0	40
42				3.4	2.2	1.8	4.1	2.5	1.9	4.5	2.5	1.9	3.9	2.8	1.9	42
44				3.1	2.0	1.8	3.9	2.3	1.9	4.2	2.5	1.9	3.8	2.5	1.9	44
46				3.1	2.0	1.8	3.6	2.3	1.8	4.0	2.4	1.9	3.4	2.5	1.9	46
48				2.9	2.0	1.8	3.6	2.3	1.8	3.6	2.3	1.9	3.2	2.5	1.9	48
50				2.8	1.9	1.8	3.5	2.2	1.8	3.5	2.3	1.8	2.9	2.3	1.8	50
52					1.9		3.2	2.0	1.8	3.0	2.3	1.8	2.6	2.3	1.8	52
54							3.1	2.0	1.8	2.9	2.1	1.8	2.4	2.3	1.8	54
56							3.1	2.0	1.8	2.5	2.0	1.8	2.4	2.3	1.8	56
58							2.7	2.0	1.8	2.5	2.0	1.8	1.9	2.0	1.8	58
60							2.6	2.0	1.8	2.2	2.0	1.8	1.9	1.9	1.8	60
62								1.9		2.0	2.0	1.8	1.8	1.8	1.8	62
64								1.9		2.0	2.0	1.8	1.4	1.5	1.8	64
66										1.5	1.9		1.4	1.3	1.3	66
68											1.5			1.3		68
组合 Code	00000			21111			22221			22222			33333			组合 Code



起重性能表

Lifting capacities

TE 99.5~103.5m



	60+21			64+21			
	0°	20°	40°	0°	20°	40°	
22	3.0						22
24	3.0			1.5			24
26	3.0			1.6			26
28	2.8	2.4		1.6			28
30	2.8	2.2		1.6	1.5		30
32	2.8	2.2	2.1	1.6	1.5		32
34	2.7	2.2	2.1	1.6	1.5	1.5	34
36	2.7	2.2	2.1	1.6	1.5	1.5	36
38	2.7	1.8	1.8	1.6	1.5	1.5	38
40	2.5	1.8	1.8	1.5	1.2	1.2	40
42	2.5	1.8	1.8	1.5	1.2	1.2	42
44	2.5	1.8	1.8	1.4	1.2	1.2	44
46	2.3	1.8	1.8	1.3	1.2	1.2	46
48	2.1	1.8	1.8	1.2	1.2	1.2	48
50	2.1	1.8	1.8	1.1	1.2	1.2	50
52	1.8	1.8	1.8	1.1	1.2	1.2	52
54	1.8	1.8	1.8	1.1	1.2	1.2	54
56	1.8	1.8	1.8	1.1	1.2	1.2	56
58	1.8	1.8	1.8	1.1	1.1	1.2	58
60	1.5	1.8	1.8	1.1	1.1	1.1	60
62	1.5	1.5	1.5	1.0	1.1	1.1	62
64	1.1	1.5	1.5	0.8	0.8	0.8	64
66	1.1	1.2	1.5	0.8	0.8	0.8	66
68	0.8	1.2	0.8				68
70	0.8	1.1					70
72	0.7	0.7					72
74		0.7					74
组合 Code	22222			33333			组合 Code

符号标识

Symbol glossary

常规标识

General symbols

	吊臂长度 Boom length		车桥 Axle
	工作幅度 Radius		行驶速度 Driving speed
	吊臂仰角 Boom angle		爬坡能力 Grade ability
	固定副臂长度 Fixed jib length		轮胎 Tires
	副臂安装角 Jib offset angle		平衡重 Counterweight
	超起 Super lifting device		上车 Superstructure
	变幅副臂 Luffing jib		底盘 Chassis
	风电臂 Wind power jib		360°全回转 360° rotation
	支腿 Outriggers		卷扬 Winch
	吊钩 Hook block		无级变幅卷筒 Stepless luffing drum
	副臂 Jib		驱动形式 Driving type

注意事项 Notes

1. 表中额定总起重量值，是在平整的坚固地面上本起重机能够保证的最大总起重量，包括吊钩和吊具的重量，所以为了估算重物重量，必须减去上述的装置重量。
2. 表中的工作幅度为起吊重物离地时起重物到起重机会转轴线的水平距离，是包括起重臂变形量在内的实际值，因而起吊前应考虑起重臂变形量。
3. 只允许在5级(瞬时风速14.1m/s，风压125N/m²)风以下进行作业。
4. 吊重前操作者必须对物体的重量和工作范围了解后选择合适的作业工况，严禁超出表中的数值。幅度及臂长在相邻两个数值之间时，应依据两个数值中较小值确定起重作业。
5. 应按主臂仰角范围作业，即使是空载，也不应使主臂仰角处于范围外，谨防整机倾翻。
6. 表中的主臂长度应要按照每节臂的伸缩要求进行伸出。

1. The total rated loads given in the rated load charts are the maximum lifting capacity when the crane is set up on firm and level ground, which includes the weight of the hook block and slings. The weight of above-mentioned devices should be deducted from the rated lifting load.
2. The working radius shown in the rated load charts is the radius when the load is lifted off the ground, and it is the actual value including loaded boom deflection. Take boom deflection into consideration before beginning a lifting operation.
3. A lifting operation is permissible only when the wind force is below grade 5 (instantaneous wind speed is 14.1 m/s, wind pressure is 125 N/m²).
4. Before beginning lifting operation, the operator should know the weight of the load to be lifted and its working range, and then select proper working conditions. Never operate the crane beyond the limit shown in the chart. Use the lower value from the chart when the boom length or working radius is between the range of values.
5. Observe the boom angle limit. Never operate the crane with the boom angle beyond the recommended limit even if a load is not being carried. Otherwise, the crane will tip.
6. The boom should be extended according to the telescoping code shown by digits, which means the percentage of boom sections extended.



地址：中国江苏徐州市铜山路165号

Add : No.165 Tongshan Road Xuzhou Jiangsu China

电话(Tel) : +86-516-83462242/83462350

质量监督电话(Quality Inquiry Tel) : +86-516-87888268

备件电话(Spare Parts Tel) : +86-516-83461542

邮编(Post Code) : 221004

网址(Web) : www.xcmg.com/qizhongji

服务热线 Service Tel

400-110-9999

400-001-5678



本印刷品不属于合同。出于产品不断改进的需要，我们保留对产品型号、参数、配置进行变更的权利，恕不另行通知。图片仅供参考，具体产品以实物为准。图片中产品可能并非标准配置，部分部件可能需要另行购置。办理牌照和上路行驶需遵守当地法规。

This print does not belong to the contract. We reserve the right to modify the design (such as product model, parameters and configuration) without notice for improvement. The pictures are just for reference. The product in the picture may not be standard configuration. Some parts need to be purchased separately. Conform to the local laws for license application and road traveling.