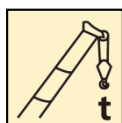


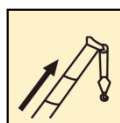
XCA200L8 全地面起重机 / All Terrain Crane

技术规格书

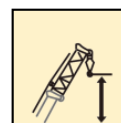
Technical specifications



200 t



88 m



115m



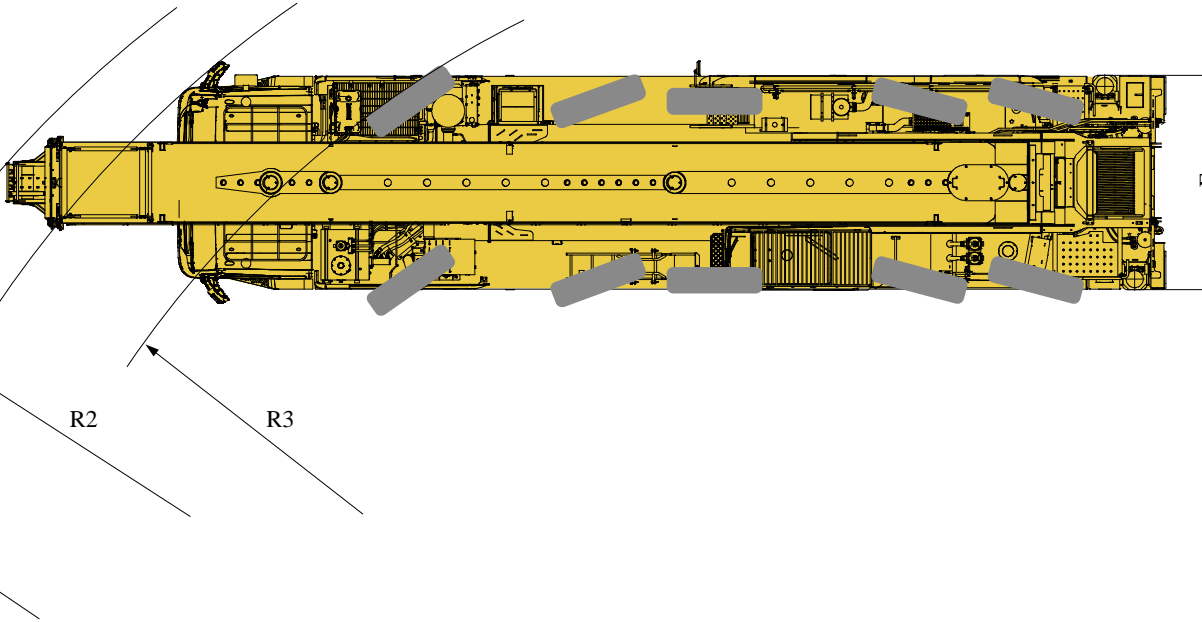
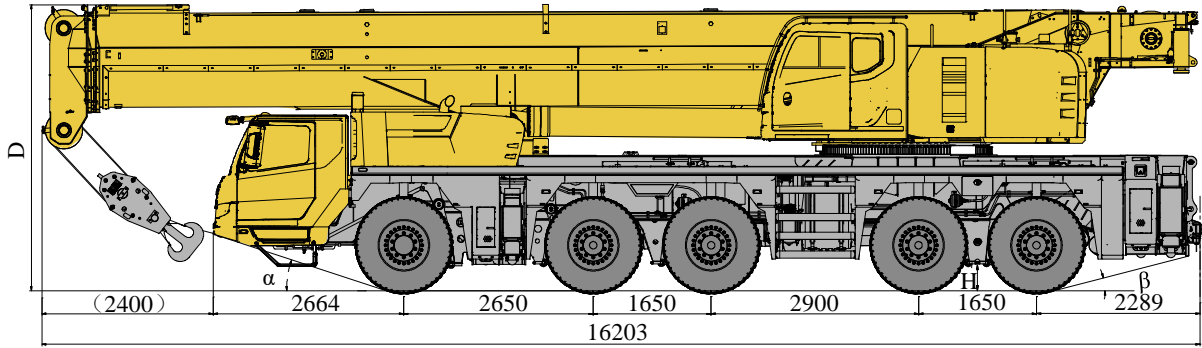
2023年4月 第3版
3rd edition, April 2023


目录

Contents

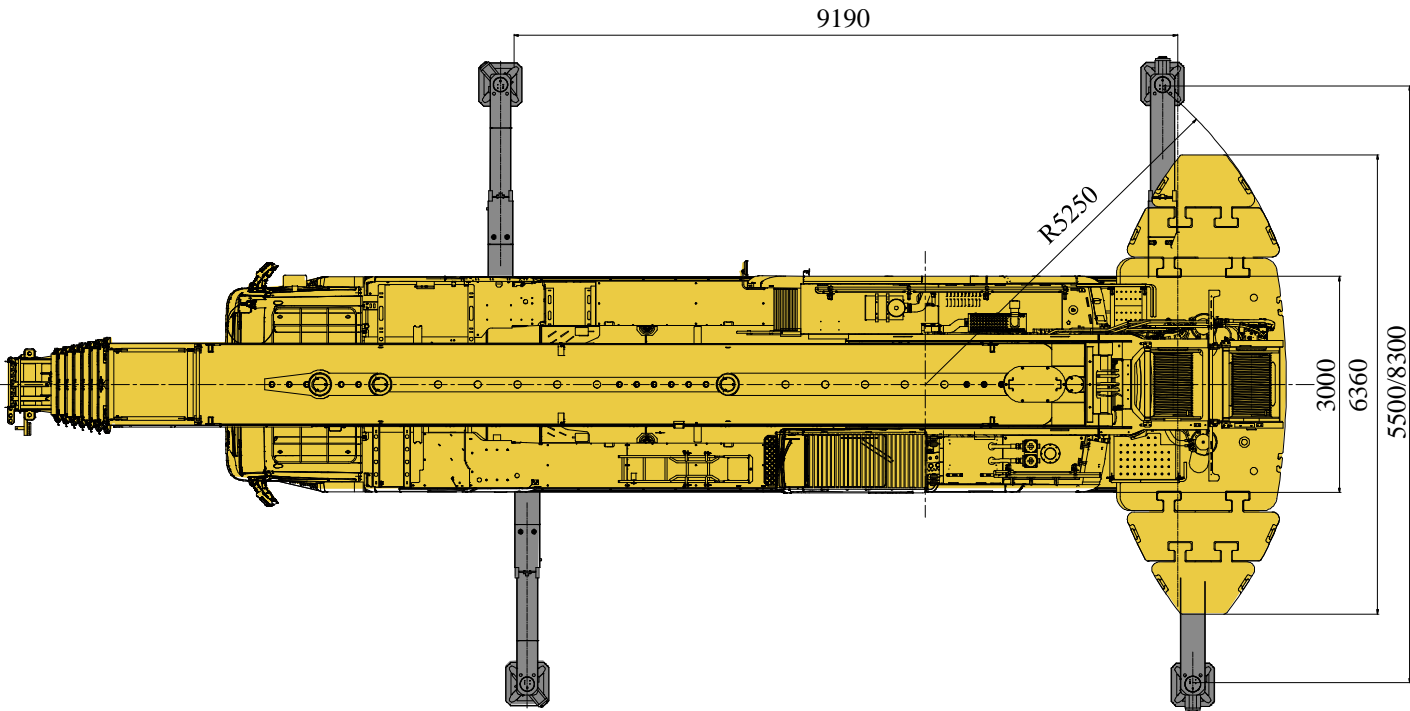
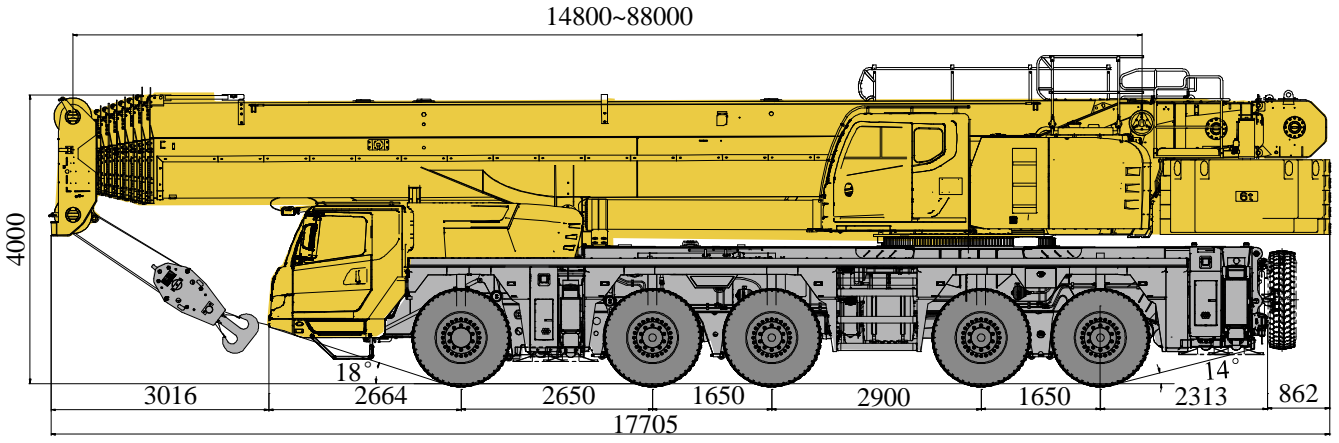
尺寸参数 Dimensions	3-4
技术规格 Technical specifications	5-9
车型Version	10
重量/作业速度 Weight / Working speeds	11-12
平衡重 Counterweight	13
臂架组合方案 Boom / Jib combinations	14-15
主臂 Boom	16-28
副臂 Jib	29-32
主臂加长节 Boom extension	33-34
主要技术参数表 Table of main technical parameters	35-36
符号标识 Description of symbols	37
注意事项 Notes	38

尺寸参数 Dimensions



	$\alpha(^{\circ})$	$\beta(^{\circ})$	D(mm)	E(mm)	H (mm)	R1 (mm)	R2 (mm)	R3 (mm)
385/95R25	18	14	4000	3000	307	12200	10900	9250

尺寸参数 Dimensions



技术规格

Technical specifications



底盘

车架	徐工设计、制造，全覆盖式走台板，防扭转箱型结构，高强度钢材制造。
支腿	4支腿，H形布置，采用双级水平支腿，水平伸缩和垂直伸缩由液压控制，底盘两侧装有电控操纵控制台，控制台板装有水平仪、照明灯和调速按钮，支腿油缸均设有单向阀，且垂直支腿带有双向液压锁。 支脚盘尺寸：600mm×600mm 最大起重量时支腿反力：前支腿805kN；后支腿1110kN
发动机	WP13.550E62，直列六缸水冷电控柴油发动机，潍柴制造，额定功率/转速405kW/1900rpm，最大扭矩/转速2500Nm/950-1400rpm； 最大基准扭矩2632Nm； 国VI排放标准； 燃油箱容积：592L； 尿素箱容积：34.3L。
液压系统	泵组直接连接在发动机的取力口上，用于支腿、转向、悬挂和独立液压散热。
变速箱	陕西法士特自动变速箱，12个前进档，2个倒档，带缓速制动。

分动箱	株齿机械式分动箱，带高、低档，装有应急转向油泵。
车桥	高强度车桥，配盘式制动器。
悬挂	所有车桥均采用油气悬挂系统，减震效果好，具有自动调平、悬架升降、弹性刚性转换等功能。
轮胎	10个轮胎，1个备胎，每桥均装单胎，承载力大。轮胎规格：385/95R25。
制动	行车制动：双回路气压制动，作用于所有车轮。 驻车制动：弹簧贮能制动，作用于2-5轴车轮。 辅助制动：发动机缓速制动，变速箱缓速制动，安全可靠，延长制动摩擦片使用寿命。
转向	全桥转向，采用先进的电液比例转向控制技术，可适应多种工况的要求，实现多种转向模式。
驾驶室	新型钢结构豪华全宽驾驶室，采用悬浮式连接结构，后部装有减震器。配备电动升降器的安全玻璃、可调式座椅、电动调节后视镜、可调节高度及角度方向盘，倒车显示器、大屏幕彩色液晶显示器和CD音响等。新型组合式中控台布局安全合理，采用圆弧造型，体现人性化的设计。 标配冷暖空调。
电气系统	直流24伏特，2个电池串联。

技术规格


Technical specifications

 上车	
结构	徐工设计、制造，高强度钢材制造。
液压系统	上车发动机驱动变量柱塞泵和齿轮泵，用于起升、变幅、伸缩和回转。采用国产电液换向阀，与变量柱塞泵进行良好的匹配启停平稳，风冷式液压油冷却器，有效降低系统油温； 液压油箱有效容积：700L
操纵方式	先导电比例操纵，无级调速，由左右2个操纵手柄控制起重机的主要动作。
起升机构	双折线绳槽卷筒，由液压马达驱动，内置行星齿轮减速器和常闭式制动器，并带有平衡阀。钢丝绳端带绳头，直接安装于索套内，提高了更换速度，方便快捷。
回转机构	单排四点接触球外齿式回转支承，由液压马达驱动，内置行星齿轮减速器和常闭式制动器，可连续回转360°，具有动力控制或自由滑转的功能，可无级调速
操纵室	带大面积透明安全玻璃，推拉式门，可调式座椅，可翻仰20°，装有安全玻璃和顶部保护栏，配备力矩限制器、电动前窗刮水器、发动机动力加速踏板、发动机起动开关、前窗遮阳帘等。标配冷暖空调。
安全装置	液压平衡阀、液压溢流阀、液压双向锁、力矩限制器；三圈保护器，防止钢丝绳过放；臂头设置高度限位，防止钢丝绳过卷风速仪，检测高空风速；卷扬监视装置，实时监控卷扬状态。
力矩限制器	当实际力矩接近过载时，发出听视觉警报并在过载之前自动停止危险动作。具有超载记忆功能（黑匣子）和故障自诊断功能
组合配重	总重76t，有0t、10t、18t、30t、40t、50t、64t和76t共8种组合方式。
电气系统	直流24伏特，2个电池串联。
吊钩	11吨吊钩 75t吊钩
无线遥控装置	进行起重机配重拆装操作，提高操作的方便性及安全性
主臂	8节，“U”形截面的筒形焊接结构。单缸插销伸缩机构，1个装有安全阀的双作用的伸缩油缸，控制每节臂的伸缩，多种伸缩模式可供选择。 主臂长度：14.8m~88m。
副臂	桁架式结构、有0°、20°和40°三种安装角度。 副臂长度：12m~36m，包含4种组合形式（12、20、28、8+28） 8m主臂加长节 连接架 旋转架 两节副臂
发动机	WP7G300E473，直列六缸水冷高压共轨柴油发动机，潍柴制造， 额定功率221kW/2200rpm， 最大扭矩1200Nm/1400-1600rpm， 非道路排放中国第四阶段排放标准； 燃油箱容积：330L。 尿素箱容积：35L。

产品各部件明细如上所述，具体部件明细请参照产品报价单

技术规格

Technical specifications

	Chassis
Frame	Designed and manufactured by XCMG, it is made of high strength steel with fully covered walking surface and anti-torsion box-typed structure.
Outriggers	Four outriggers arranged in H-shape are hydraulically controlled by control levers. Double-stage outrigger beam is adopted. There is an outrigger control station located at each side of the chassis, and there is a level gauge, an illuminator and two speed buttons on each control station. There is a check valve fitted in each outrigger cylinder, and a double-way hydraulic valve fitted in each jack cylinder. Float dimension: 600mm×600mm。 Reaction force of outriggers with max. lifting load: front outriggers: 805kN; rear outriggers: 1110kN.
Engine	WP13.550E62, in-line, 6-cylinder, water cooled, electric control diesel engine, made by Weichai, with rated power of 405kW/1900 rpm and max. torque of 2500Nm/950-1400 rpm. Max. reference torque: 2632 Nm . The engine complies with China VI emission standard. Fuel tank capacity: approx. 592 L. AdBlue tank capacity: 34.3 L .
Hydraulic system	The pump group is connected to the PTO of the engine for controlling the movements of outriggers, steering, suspension and independent cooling for hydraulic system.
Transmission	FAST automatic transmission with retarder brake; 12 forward gears and 2 reverse gears available. ZF Germany automatic transmission with retarder brake; 12 forward gears and 2 reverse gears available.

Transfer case	Mechanical transfer gear made by Zhuzhou Gear with high/low speed, is equipped with emergency steering pump.
Axles	High strength axle, equipped with disc brake.
Suspension	Hydro-pneumatic suspension system has good shock-absorbing effect. Various functions such as automatic leveling, moving up and down of suspension, and switching over of blocked and unlocked suspension are available.
Tires	10 tires and 1 spare tire, each axle is equipped with single tire, with large bearing capacity. Tire specifications: 385/95R25.
Braking system	Service brake: dual-circuit air pressure brake, acting on all wheels. Parking brake: spring-loaded brake, acting on the wheels of axles 2~5. Auxiliary brakes: engine retarder brake and transmission retarder brake; safe and reliable, with longer service life of brake lining.
Steering system	All axles steering, advanced technology of electro-hydraulic proportional steering control is suitable for various demands of operation modes and several steering modes can be realized.
Driver's cab	Full dimension steel structure luxury cab has suspension connection structure and rear damper. It is equipped with adjustable seats, safety glass, electrically operated door window lifter, electric-adjustable mirrors, steering wheel adjustable in height and angle, reverse display, large screen liquid crystal display and CD player, etc. New combined central control panel is reasonably arranged with arc shape adopted, presenting user-friendly design concept. Heater and air conditioner are equipped as a standard.
Electrical system	DC 24 V, two batteries in series.

技术规格

Technical specifications



Superstructure

Frame	Designed and manufactured by XCMG, made of high strength steel.
Hydraulic system	Variable plunger pump and gear pump driven by superstructure engine are used for lifting, elevating, telescoping, slewing operations. Domestic electro-hydraulic change valve, matching perfectly and stably with plunger variable pump. Air-cooled hydraulic oil cooler may effectively reduce the oil temperature in the system. Effective volume of hydraulic oil tank: 700L
Operating method	The pilot electric proportional control system is equipped with two levers at left and right sides controlling the main movements of the crane, and stepless slewing speed regulation is available.
Winch system	Drum with Lebus grooves, driven by a hydraulic motor, with build-in planetary gear reducer, constant closed brake and balance valve. Wire rope has a rope head, which is directly installed in pouch socket. Time for replacing wire rope is shortened, the replacement is easy and fast.
Slewing system	A single-row, four-point contact-ball external toothed slewing bearing is driven by hydraulic motor, with built-in planetary gear reducer and constant-closed brake equipped, and may continuously slew 360°. Power control and free slewing function as well as stepless speed regulation are available.
Operator's cab	Large safety glass, sliding door, adjustable seat. It can be tilted up or down by 20°. Safety glass and top protective rails, LMI, electric windshield wipers, engine accelerator pedal, engine start switch and windshield visor, etc. are also available. Heater and air conditioner are standard configuration.

Safety device	Hydraulic balance valve, hydraulic relief valve, hydraulic double-way valve and LMI are available. Lowering limiter is equipped in winch to prevent rope over-releasing. Anti-two block is fitted on the boom head to prevent rope over-winding. Anemometer is equipped to check whether aerial wind velocity is in safe working range. Winch monitor is for real-time monitoring of winch running.
LMI	When the actual torque approaches the limit and overloading may occur, the LMI will send an alarm and stop dangerous operation before overloading. Overloading memory function (black box) and fault self-diagnosis function are available.
Combined counterweight	Total weight is 76 t. Eight counterweight combinations of 0 t, 10 t, 18 t, 30 t, 40 t, 50 t, 64 t and 76 t are available.
Electrical system	DC 24 V, two batteries in series.
Hook block	11 t hook block 75 t hook block
Wireless remote control device	Carrying out the installation or removal of counterweight to improve the convenience and security of operation.
Boom	8-section boom with U-shaped cross-section, welded structure. Single-cylinder pinning telescoping system is adopted. One double-acting cylinder with safety valve is used for controlling the telescoping movements of all boom sections with various telescoping pattern available. Boom length: 14.8m~88m.



Superstructure

Jib	Lattice structure with 0° , 20° and 40° jib offset angles available. Jib length: 12 m~36 m, with 4 kinds of combinations (12, 20, 28, 8+28)
	Boom extension of 8 m
	Connecting bracket
	Folding bracket
	Two jib sections
Engine	WP7G300E473, in-line, 6-cylinder, water cooled, high pressure common rail, diesel engine, made by Weichai, with rated power of 221kW/2200 rpm and max. torque of 1200Nm/1400-1600 rpm, compliant with China IV non-road emission standard. Fuel tank capacity: approx. 330 L. AdBlue tank capacity: 35 L .

Each part of the crane has been specified above. Please refer to the crane quotation for more details.

车型与选装件

Version and optional equipment

车型 Version	功能描述/Function description	选择 Selection
标准型 Standard	八节主臂88m, 固定副臂36m 8-section boom of 88 m, fixed jib of 36m	

注释: 该产品仅标准型一种车型。

Note: only standard version is available for this model.

重量 Weight



车桥 Axle	1	2	3	4	5	总重量 Total weight
t	9.3	9.9	11.7	11.6	11.5	54 ¹⁾
t	13.8	14.0	13.6	13.6	13.5	68.5 ²⁾
t	15.8	16.0	18.6	18.5	18.5	87.4 ³⁾
t	14.7	14.9	19.8	19.7	19.7	88.8 ⁴⁾

1) 上车拆除第3-8节臂、臂端单滑轮、副臂、副起升机构、平衡重, 下车拆除支脚盘、备胎及支架, 携带75t吊钩;
驱动形式: 10x8; 轮胎规格: 385/95R25

Superstructure: 3-8 boom sections, auxiliary sheave, jib, auxiliary winch, and counterweight are removed.

Chassis: outrigger floats, spare tire and its bracket are removed. 75 t hook block are carried.

Driving mode: 10×8; tire specification: 385/95R25.

2) 上车带1-8节主臂、主卷及钢丝绳、配重油缸、75t吊钩, 不带副卷、副臂、臂端单滑轮; 下车带支脚盘、备胎及支架。驱动形式: 10x8; 轮胎规格: 385/95R25

Superstructure: 1-8 boom sections, main winch and its wire rope, counterweight cylinder, 75 t hook block are carried; auxiliary winch, jib and auxiliary sheave are removed.

Chassis: outrigger floats, spare tire and its bracket are carried.

Driving mode: 10×8; tire specification: 385/95R25.

3) 上车带1-8节主臂、主卷及钢丝绳、配重油缸、75t吊钩、18t配重, 不带副卷、副臂、臂端单滑轮; 下车带支脚盘、备胎及支架。驱动形式: 10x8; 轮胎规格: 385/95R25

Superstructure: 1-8 boom sections, main winch and its wire rope, counterweight cylinder, 75 t hook block and 18 t counterweight are carried; auxiliary winch, jib and auxiliary sheave are removed.

Chassis: outrigger floats, spare tire and its bracket are carried.

Driving mode: 10×8; tire specification: 385/95R25.

4) 上车带1-8节主臂、主卷及钢丝绳、配重油缸、75t吊钩、18t配重、副卷及钢丝绳、臂端单滑轮, 不带副臂; 下车带支脚盘、备胎及支架。驱动形式: 10x8; 轮胎规格: 385/95R25

Superstructure: 1-8 boom sections, main winch and its wire rope, counterweight cylinder, 75 t hook block, 18 t counterweight, auxiliary winch and its wire rope and auxiliary sheave are carried; jib is removed.

Chassis: outrigger floats, spare tire and its bracket are carried.

Driving mode: 10×8; tire specification: 385/95R25.



吊钩 Hook block	倍率 Parts of line	吊钩重量 Weight (kg)	备注 Remarks
75 t	7	740	双钩 Double hook
11 t	1	296	单钩 Single hook

作业速度 Working speeds



385/95 R 25



1 ~ 80

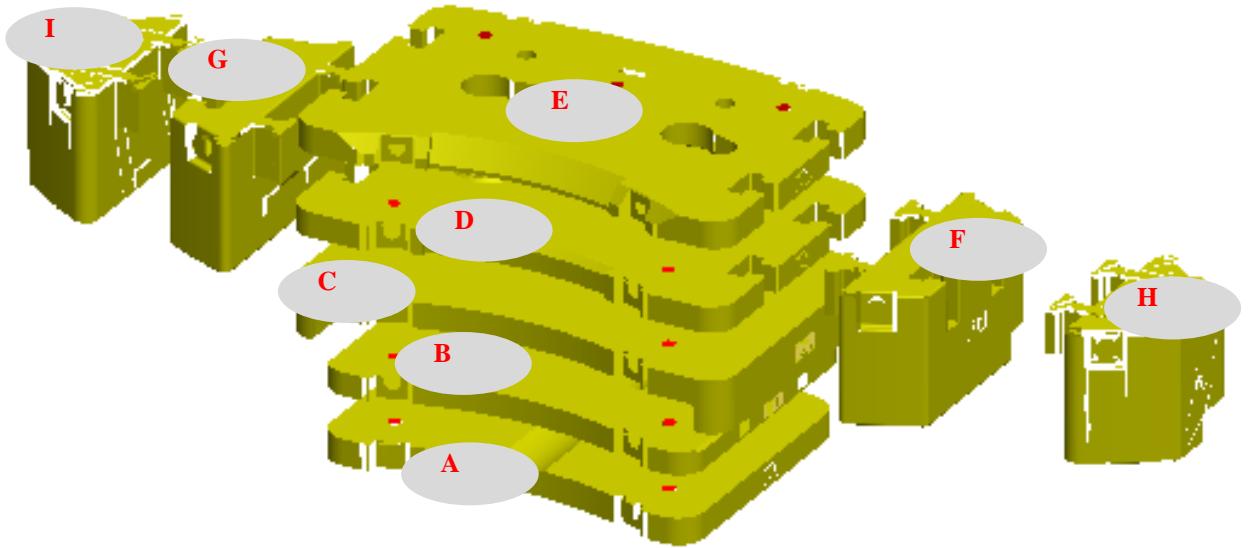


65%



作业机构 Operation mechanism	作业速度 Working speed	最大单绳拉力 Max. single line pull	钢丝绳直径/长度 Rope diameter/ length
	0-130 m/min, 单绳, 第四层 m/min, single line, 4th layer	107.8 kN	22 mm/360 m
	0-1.5 r/min		
	从-0.5°抬起至82°约65s Approx. 65 s for boom luffing from -0.5° to 82°		
	从14.8m伸出至88m约960s Approx. 960 s for boom extending from 14.8 m to 88 m		

平衡重 Counterweight

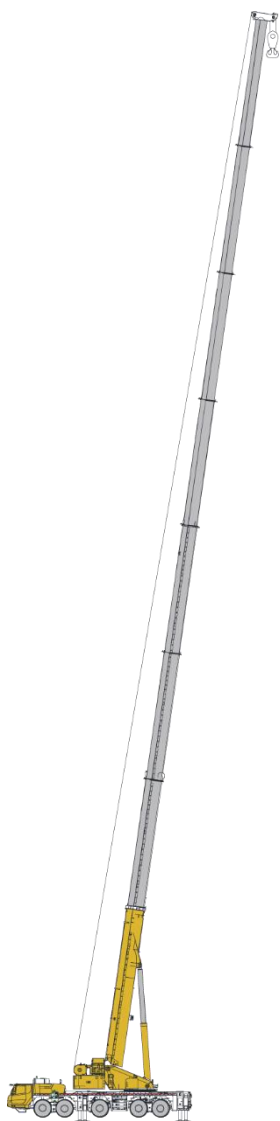


平衡重 Counterweight slab	A	B	C	D	E	F	G	H	I
尺寸 (长×宽×高) mm Dimensions (L×W×H) (mm)	2990×2360 ×1024	2990×2350 ×214	3500×2350 ×450	3500×2350 ×232	3500×2300 ×216	1923×868× 1035	1923×868× 1035	1601×1010 ×1035	1601×1010 ×1035
重量 t Weight (t)	10	8	12	10	10	7	7	6	6

工况模式 Operation mode	76t	64 t	50 t	40 t	30 t	18 t	10 t	0t
组合形式 Combinations	A+B+C+D+E+F+ G+H+I	A+B+C+D+E+F+G	A+B+C+D+E	A+B+C+D	A+B+C	A+B	A	—

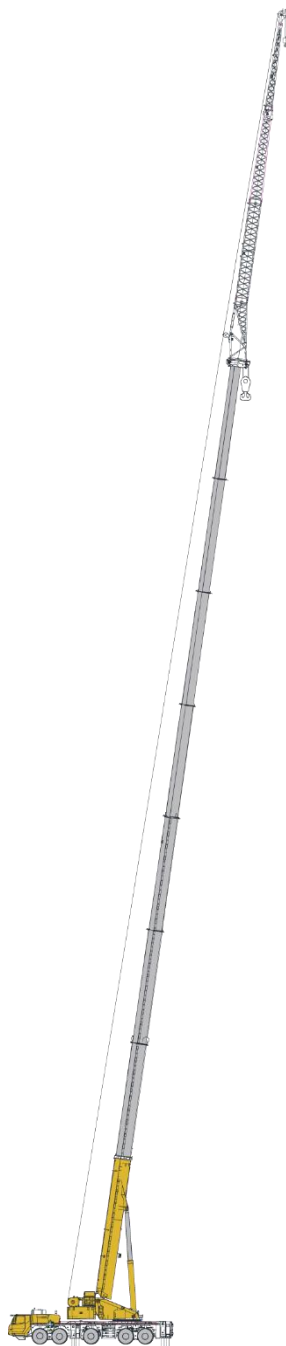
臂架组合方案

Boom / Jib combinations



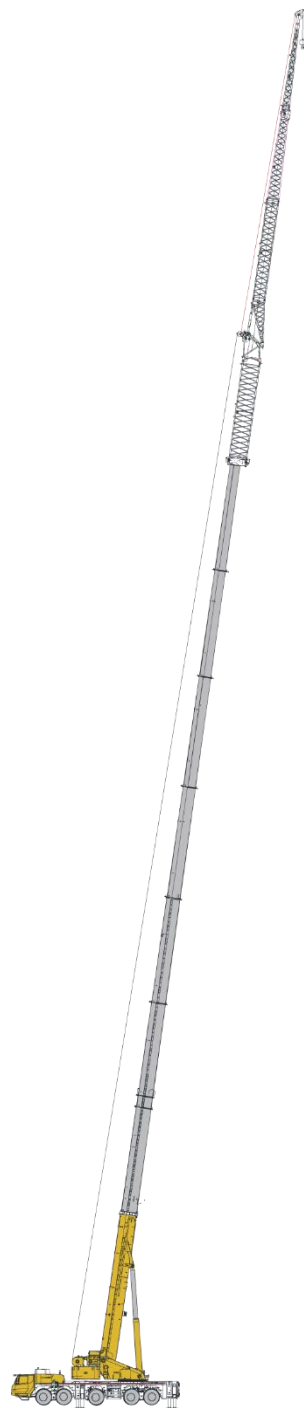
主臂
Boom

T:14.8~88 m



副臂
Jib

T:67.7~82.1 m
J:12~28 m

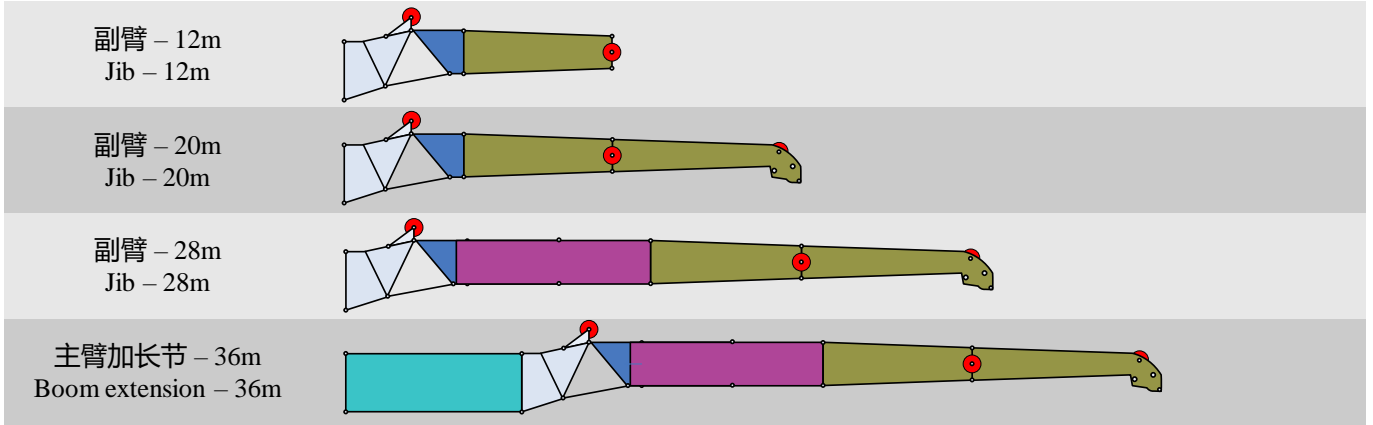


主臂加长节
Boom extension

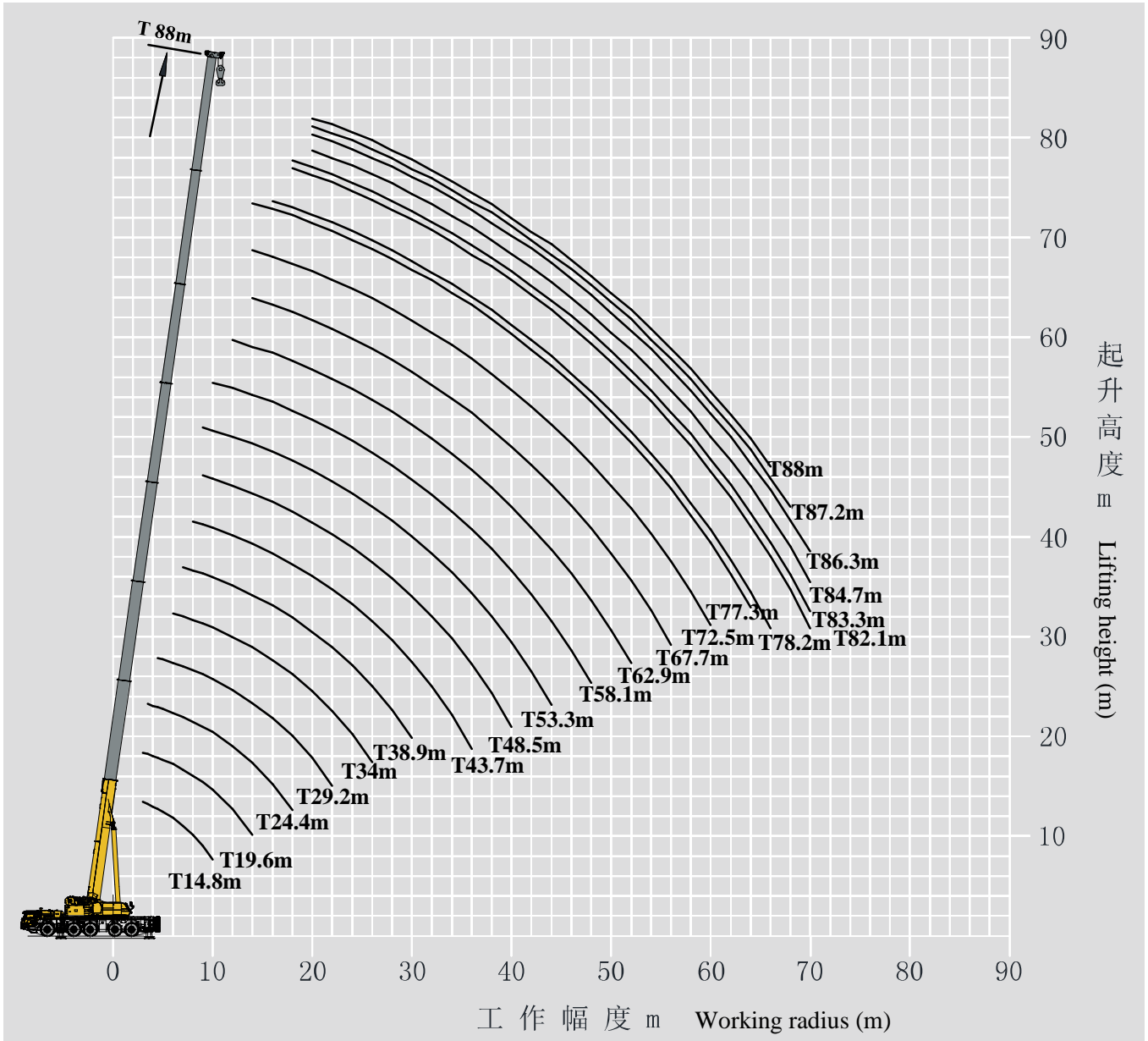
T:67.7~82.1 m
V: 8 m
J: 28 m

臂架组合方案

Boom / Jib combinations



部件 Component	结构形式 Structure	尺寸 (长×宽×高) mm Dimensions (L×W×H) (mm)	重量 kg Weight (kg)
连接架 Connecting bracket		1650×1000×2300	320
旋转架 Folding bracket		3610×950×1350	390
主臂加长节 Boom extension		8200×1050×1400	600
一节副臂总成 1st jib section assembly		7700×950×1100	700
二节副臂总成 2nd jib section assembly		8000×600×700	400
副臂加长节 I Jib extension I		8200×950×1100	560



起重性能表

Lifting capacities

T 14.8~38.9m

m	14.8-38.9m														m
	14.8	19.6	19.6	19.6	19.6	19.6	24.4	24.4	24.4	24.4	24.4	29.2	29.2		
3	200.0*														3
3	142.0	70.0	135.0	135.0	136.0	136.0									3
3.5	141.0	66.3	132.0	132.0	133.0	133.0	46.0	68.2	116.0	120.0	120.0				3.5
4	132.0	62.6	131.0	130.0	129.0	127.0	44.0	65.0	108.5	117.0	120.0				4
4.5	125.0	59.5	121.0	121.0	120.0	120.0	41.6	63.0	101.0	110.0	117.0	42.4	43.5		4.5
5	118.0	57.0	113.0	113.0	113.0	113.0	39.0	59.5	93.5	104.0	110.0	40.0	41.0		5
6	106.0	52.0	103.0	102.0	108.6	100.0	35.0	56.0	86.0	92.0	96.0	37.0	37.5		6
7	92.5	48.0	91.0	91.0	92.5	90.0	32.0	52.4	78.5	82.0	86.0	34.0	34.0		7
8	84.0	44.0	81.0	82.0	82.5	80.0	29.0	47.6	72.6	75.0	76.0	31.0	30.5		8
9	72.5	42.0	74.0	75.4	74.0	72.0	28.6	44.0	66.8	72.0	69.0	27.5	27.0		9
10	64.6	39.5	70.0	68.5	68.0	66.0	26.2	40.0	60.9	62.0	64.0	25.0	24.5		10
12		35.0	58.0	57.0	56.0	54.0	23.6	36.5	55.0	54.0	55.0	22.5	22.0		12
14		32.0	48.0	47.0	46.0	45.0	20.5	33.3	46.5	47.0	46.0	20.0	19.5		14
16							18.6	30.2	40.0	38.0	39.0	17.5	17.0		16
18							17.0	27.0	33.0	32.0	33.0	16.0	15.7		18
20												14.5	14.3		20
22												13.0	13.0		22
组合Code	0000000	0000001	0000100	0010000	0100000	1000000	0000002	0000011	0000110	0001100	1100000	0000012	0000021	组合Code	
吊钩 Hook block	150	150	150	150	150	150	150	150	150	150	150	150	150	吊钩 Hook block	
倍率n	15	14	14	14	14	14	12	12	12	12	12	10	10	倍率n	

m	14.8-38.9m														m
	29.2	29.2	29.2	34.0	34.0	34.0	34.0	34.0	34.0	34.0	38.9	38.9	38.9		
4.5	66.9	102.0	102.0												4.5
5	63.2	100.0	102.0												5
6	58.6	90.0	94.0	32.0	37.0	45.7	61.3	86.0	88.0	88.0					6
7	55.1	80.6	84.0	29.0	35.0	41.2	57.5	78.0	85.0	84.0	29.2	31.0	36.0		7
8	51.6	76.0	76.0	27.0	33.0	37.5	52.8	71.6	77.0	76.0	27.0	28.0	34.5		8
9	49.0	71.0	69.0	25.0	31.5	34.7	49.1	66.0	70.0	68.0	24.2	25.7	33.0		9
10	46.2	66.0	63.0	22.1	28.3	31.9	45.4	59.6	64.0	62.0	21.9	23.9	31.0		10
12	40.6	56.0	55.0	19.4	25.2	29.0	40.0	52.2	55.0	53.0	19.1	20.4	28.5		12
14	36.0	48.0	46.0	17.1	23.0	26.0	36.5	46.6	47.0	46.0	16.9	17.9	25.0		14
16	32.0	39.0	39.0	15.5	20.2	23.0	33.0	40.0	38.6	39.0	15.6	16.4	22.4		16
18	28.9	32.4	34.0	14.0	17.6	19.5	29.6	33.3	31.5	34.0	13.8	14.8	21.0		18
20	26.5	28.8	29.0	12.5	15.7	17.6	25.4	29.7	27.9	30.0	12.6	13.4	19.0		20
22	24.5	25.2	24.8	11.5	14.3	16.1	23.3	26.1	24.9	25.7	11.1	12.0	16.8		22
24				10.5	13.1	14.7	21.5	23.0	21.5	22.0	10.2	11.0	16.0		24
26				9.5	12.2	13.6	19.9	20.2	18.8	19.0	9.3	9.7	15.0		26
28											8.7	9.0	13.5		28
30											8.1	8.4	12.5		30
组合Code	0000111	0011100	1110000	0000022	0000121	0000211	0001111	0011110	0111100	1111000	0000122	0000221	0001112	组合Code	
吊钩 Hook block	150	150	150	150	150	150	150	150	150	150	75	75	75	吊钩 Hook block	
倍率n	10	10	10	9	9	9	9	9	9	9	7	7	7	倍率n	

注: *起重能力等级 Note: * Capacity class

起重性能表

Lifting capacities

T 38.9~48.5m

m	38.9-48.5m				9.19m×8.3m		360°		76t						m
	38.9	38.9	38.9	38.9	43.7	43.7	43.7	43.7	43.7	43.7	48.5	48.5			
7	44.0	60.1	73.5	73.5										7	
8	41.3	55.0	70.6	73.5	22.8	28.1	27.5	44.9	57.5	63.5	63.5			8	
9	38.1	50.9	64.5	68.0	21.0	25.9	25.3	41.3	52.1	63.0	58.2	21.3	23.4	9	
10	35.3	47.2	59.5	63.0	19.2	24.0	23.5	37.7	48.4	58.0	53.0	19.9	21.5	10	
12	30.2	40.5	52.6	53.6	16.5	20.9	19.9	32.3	44.0	53.0	47.0	17.1	18.6	12	
14	26.7	36.8	47.0	46.0	14.7	18.6	17.6	28.7	39.0	46.0	41.6	15.2	16.2	14	
16	23.5	33.0	40.0	39.0	12.9	16.4	15.8	25.5	33.2	38.4	36.0	13.3	14.3	16	
18	21.0	30.0	33.6	34.0	11.5	15.0	14.0	22.9	30.5	34.0	31.0	11.8	12.8	18	
20	19.1	27.0	29.4	30.0	10.6	13.6	12.6	21.0	27.7	30.0	26.0	10.9	11.4	20	
22	16.8	25.0	25.8	26.6	9.7	12.3	11.5	19.1	25.0	27.0	23.3	9.9	10.4	22	
24	15.8	22.2	22.9	23.0	8.8	11.4	10.6	17.4	23.2	24.0	20.3	9.0	9.5	24	
26	14.8	20.6	20.1	20.0	8.1	10.5	9.7	15.9	20.8	21.0	17.5	8.3	8.8	26	
28	13.6	19.1	17.8	17.4	7.4	9.8	9.0	14.7	18.5	18.4	15.2	7.8	8.1	28	
30	12.4	17.3	15.8	15.3	6.9	9.1	8.3	13.7	16.5	16.2	13.3	7.1	7.4	30	
32					6.3	8.5	7.6	12.8	14.8	14.4	11.6	6.6	6.9	32	
34					5.9	8.0	7.2	11.8	13.3	12.7	10.1	6.1	6.4	34	
36					5.5	7.5	6.7	11.1	12.0	11.4	8.9	5.7	5.9	36	
38												5.4	5.4	38	
40												5.1	5.0	40	
组合Code	0002111	0011111	0111110	1111100	0000222	0001122	0001221	0021111	0111111	1111110	2111100	0001222	0002221	组合Code	
吊钩 Hook block	75	75	75	75	75	75	75	75	75	75	75	75	75	吊钩 Hook block	
倍率n	7	7	7	7	6	6	6	6	6	6	6	6	6	倍率n	

起重性能表

Lifting capacities

T 48.5~53.3m

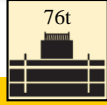
48.5-53.3m



9.19m×8.3m



360°



76t

m	48.5 48.5 48.5 48.5 48.5 53.3 53.3 53.3 53.3 53.3 53.3 53.3 53.3														m
	48.5	48.5	48.5	48.5	48.5	53.3	53.3	53.3	53.3	53.3	53.3	53.3	53.3		
9	27.5	34.0	46.3	55.0	55.5	20.0	23.9	26.4	26.0	35.8	34.8	45.5	42.0	9	
10	25.8	32.5	42.4	54.0	50.5	18.6	22.0	24.6	25.0	33.2	33.6	42.0	38.0	10	
12	23.2	30.0	36.6	47.0	44.6	16.0	19.0	21.0	22.8	29.5	31.3	38.0	33.4	12	
14	20.9	27.8	32.7	42.0	39.0	14.1	16.9	18.5	20.5	25.7	28.4	34.2	29.4	14	
16	18.5	25.5	28.9	38.0	35.0	12.6	14.8	16.5	18.8	22.7	25.7	31.0	26.0	16	
18	16.6	23.0	26.0	33.6	31.0	11.1	13.3	14.6	17.2	20.5	23.0	27.0	23.6	18	
20	15.1	21.0	23.1	29.0	27.0	10.1	11.8	13.0	16.0	18.3	21.0	25.6	21.4	20	
22	14.2	19.5	21.2	26.0	23.6	9.1	10.8	11.9	15.0	16.9	20.8	23.0	19.5	22	
24	12.8	18.0	19.3	24.0	20.2	8.3	9.8	10.8	14.2	15.2	19.6	20.0	17.5	24	
26	11.8	16.5	18.4	21.0	18.6	7.6	9.1	9.8	13.2	13.8	18.3	18.6	15.4	26	
28	11.1	14.5	16.5	19.0	16.3	7.1	8.4	9.0	12.2	12.7	16.9	17.2	13.4	28	
30	10.4	13.2	15.5	17.0	14.3	6.6	7.8	8.3	11.5	11.8	15.8	15.6	12.1	30	
32	9.7	12.0	14.5	15.0	12.6	6.2	7.2	7.6	10.6	10.8	14.9	14.0	11.1	32	
34	9.2	11.0	13.0	13.7	11.1	5.7	6.6	7.1	10.0	10.3	13.4	12.5	10.1	34	
36	8.7	10.3	11.7	12.3	9.8	5.2	6.2	6.6	9.2	9.3	12.0	11.2	9.6	36	
38	8.2	9.7	10.5	11.1	8.7	4.9	5.7	6.1	8.6	8.8	10.9	10.0	8.5	38	
40	7.7	9.2	9.5	9.9	7.6	4.6	5.4	5.6	8.5	8.3	9.9	9.0	7.4	40	
42						4.3	4.9	5.2	8.3	7.9	8.9	8.0	6.5	42	
44						4.1	4.7	4.9	7.8	7.4	8.1	7.0	5.7	44	
组合Code	0011122	0111112	0211111	1111111	2111110	0002222	0012221	0022211	0111122	0221111	1111112	2111111	2211110	组合Code	
吊钩 Hook block	75	75	75	75	75	75	75	75	75	75	75	75	75	吊钩 Hook block	
倍率n	6	6	6	6	6	5	5	5	5	5	5	5	5	倍率n	

起重性能表

T 58.1~62.9m

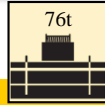
Lifting capacities

m	58.1-62.9m				9.19m×8.3m		360°		76t		m			
	58.1	58.1	58.1	58.1	58.1	58.1	58.1	58.1	62.9	62.9		62.9	62.9	62.9
10	18.2	20.6	23.4	23.6	27.6	25.0	32.3	35.0						10
12	16.5	17.8	20.6	20.9	23.9	23.0	28.9	32.0	17.3	19.7	20.3	21.0	19.6	12
14	14.7	15.8	18.6	18.5	21.0	21.0	25.2	29.0	15.8	18.0	19.0	19.8	19.0	14
16	13.0	13.9	16.6	16.7	18.6	19.5	21.9	26.0	14.4	16.2	16.9	17.3	18.4	16
18	11.6	12.4	15.3	14.9	16.8	17.7	19.9	23.8	13.1	14.8	15.2	15.6	17.4	18
20	10.6	11.4	14.2	13.6	15.3	16.5	18.4	21.2	11.9	13.4	13.8	14.1	16.3	20
22	9.7	10.4	12.9	12.4	14.0	15.6	17.0	20.0	10.9	12.5	12.6	13.2	15.5	22
24	8.8	9.4	12.0	11.5	13.0	14.6	15.8	18.0	9.9	11.5	11.6	12.2	14.8	24
26	8.1	8.6	11.0	10.5	12.0	13.7	14.5	15.8	9.2	10.6	10.7	11.2	13.8	26
28	7.8	8.1	10.5	10.0	11.0	12.8	13.6	14.8	8.5	9.9	9.7	10.3	13.1	28
30	7.3	7.5	9.8	9.4	10.3	12.0	12.4	13.5	8.0	9.4	9.2	9.6	12.1	30
32	6.8	6.9	9.2	8.7	9.5	11.6	11.5	12.0	7.4	8.7	8.7	8.9	11.4	32
34	6.3	6.4	8.7	8.1	9.0	11.0	10.4	11.0	6.9	8.2	8.0	8.4	10.9	34
36	5.8	6.1	8.2	7.6	8.5	10.5	9.6	10.3	6.6	7.7	7.5	7.7	10.0	36
38	5.7	5.8	7.7	7.4	8.0	10.0	8.9	9.4	6.1	7.4	7.0	7.3	9.3	38
40	5.2	5.5	7.4	6.9	7.4	9.5	8.4	8.7	5.6	6.9	6.5	6.8	8.8	40
42	4.9	5.3	7.1	6.6	7.0	9.0	7.9	7.9	5.4	6.7	6.2	6.3	8.4	42
44	4.6	5.0	6.9	6.3	6.5	8.5	7.3	7.0	5.1	6.4	5.8	5.9	8.1	44
46	4.3	4.8	6.3	5.8	5.8	8.0	6.5	6.2	4.9	5.9	5.5	5.6	7.7	46
48	4.1	4.5	6.1	5.5	5.4	7.4	5.8	5.4	4.6	5.7	5.3	5.3	7.1	48
50									4.3	5.4	5.0	5.1	6.5	50
52									4.1	5.2	4.8	4.9	6.0	52
组合Code	0012222	0022221	0111222	0112221	0222111	1111122	1221111	2211111	0022222	0112222	0122221	0222211	1111222	组合Code
吊钩 Hook block	75	75	75	75	75	75	75	75	75	75	75	75	75	吊钩 Hook block
倍率n	4	4	4	4	4	4	4	4	3	3	3	3	3	倍率n

起重性能表

Lifting capacities

T 62.9~72.5m



	62.9		62.9		67.7		67.7		67.7		72.5		72.5		
m	62.9	62.9	62.9	67.7	67.7	67.7	67.7	67.7	67.7	67.7	72.5	72.5	72.5	72.5	m
12	23.1	24.0	26.8												12
14	22.1	21.3	26.1	16.2	16.5	17.9	19.1	19.4	19.7	14.8	15.4	15.5	15.8	14	
16	19.6	18.6	25.2	15.5	15.5	17.2	18.4	19.1	19.4	14.4	15.0	15.2	15.8	16	
18	18.3	18.5	22.6	14.4	13.9	16.5	17.4	18.0	18.8	14.3	14.9	15.2	15.8	18	
20	16.7	17.7	20.4	13.1	13.4	15.5	15.9	16.6	18.2	13.7	14.6	15.2	15.7	20	
22	15.3	17.3	18.3	12.0	12.8	14.3	14.5	15.1	16.5	12.4	13.4	14.0	15.3	22	
24	14.3	16.2	16.7	11.1	12.1	13.4	13.5	13.9	15.0	11.4	12.5	12.8	13.8	24	
26	13.2	14.7	15.7	10.1	11.2	12.4	12.5	12.9	13.9	10.5	11.5	11.8	12.8	26	
28	12.2	13.7	14.2	9.4	10.4	11.6	11.5	12.0	12.9	9.8	10.8	11.0	11.8	28	
30	11.3	12.6	13.1	8.8	9.8	10.9	10.7	11.0	11.8	9.2	10.0	10.0	10.8	30	
32	10.8	11.6	12.1	8.2	9.0	10.2	10.0	10.4	10.8	8.5	9.6	9.5	10.0	32	
34	9.9	11.1	11.0	7.7	8.4	9.5	9.4	9.6	10.0	8.0	8.8	8.8	9.2	34	
36	9.7	10.0	10.3	7.2	7.7	9.0	8.8	9.0	9.4	7.5	8.3	8.3	8.7	36	
38	9.2	9.5	9.5	6.7	7.2	8.5	8.3	8.5	8.8	7.0	7.8	7.8	7.9	38	
40	8.7	8.2	8.6	6.4	6.7	8.0	7.8	7.9	8.2	6.7	7.5	7.3	7.4	40	
42	8.2	7.7	7.6	5.9	6.4	7.7	7.5	7.4	7.5	6.3	7.1	6.8	7.0	42	
44	7.7	7.1	6.7	5.6	6.0	7.3	7.0	6.9	6.8	6.0	6.8	6.5	6.6	44	
46	7.3	6.3	6.0	5.4	5.6	6.9	6.7	6.6	6.0	5.7	6.3	6.0	5.8	46	
48	6.8	5.7	5.4	5.1	5.4	6.6	6.4	6.1	5.4	5.2	6.1	5.8	5.4	48	
50	6.2	5.0	4.7	4.9	5.1	6.3	6.0	5.8	4.6	5.0	5.8	5.5	5.1	50	
52	5.6	4.5	4.1	4.7	4.8	6.1	5.7	5.2	4.4	4.7	5.5	5.2	4.5	52	
54				4.5	4.6	5.6	5.2	4.6	3.8	4.6	5.2	4.8	3.9	54	
56				4.3	4.3	5.1	4.7	4.1	3.3	4.4	4.9	4.3	3.4	56	
58										4.1	4.6	3.8	3.0	58	
60										3.9	4.2	3.4	2.5	60	
组合Code	1112221	1222111	2221111	0122222	0222221	1112222	1122221	1222211	2222111	0222222	1122222	1222221	2222211	组合Code	
吊钩 Hook block	75	75	75	75	75	75	75	75	75	75	75	75	75	吊钩 Hook block	
倍率n	3	3	3	2	2	2	2	2	2	2	2	2	2	倍率n	

起重性能表

T 77.3~88m

Lifting capacities

m	77.3-88m	9.19m×8.3m	360°	76t							m	
	77.3	77.3	78.2	78.2	82.1	83.0	84.7	86.3	87.2	88.0		
14	12.7	12.5										14
16	12.6	12.5	11.5	12.0								16
18	12.4	12.5	11.4	12.0	9.3	9.0						18
20	12.3	12.5	11.3	12.0	9.3	9.0	8.4	7.6	7.3	7.2		20
22	12.3	12.5	11.2	12.0	9.3	9.0	8.4	7.6	7.2	7.0		22
24	12.1	12.4	11.1	12.0	9.2	8.9	8.4	7.6	7.1	6.8		24
26	11.4	12.1	10.8	12.0	9.2	8.9	8.4	7.6	7.0	6.6		26
28	10.6	11.0	10.4	11.0	9.2	8.9	8.3	7.6	6.9	6.4		28
30	9.8	10.2	9.7	10.1	9.1	8.9	8.3	7.5	6.6	6.2		30
32	9.0	9.4	9.1	9.3	9.0	8.9	8.3	7.5	6.3	6.1		32
34	8.4	8.7	8.5	8.7	8.5	8.4	7.9	7.2	6.3	6.1		34
36	7.9	8.2	7.9	8.2	8.0	7.8	7.5	6.8	6.3	6.0		36
38	7.4	7.7	7.6	7.6	7.5	7.3	6.9	6.4	6.0	5.9		38
40	7.0	7.2	7.2	7.1	7.0	6.6	6.5	6.0	5.9	5.8		40
42	6.6	6.7	6.8	6.6	6.5	6.5	6.0	5.7	5.5	5.7		42
44	6.4	6.3	6.4	6.2	6.2	6.0	5.7	5.4	5.3	5.6		44
46	6.1	5.9	6.0	5.8	5.9	5.6	5.5	5.2	5.1	5.5		46
48	5.9	5.5	5.7	5.4	5.4	5.3	5.2	5.0	4.8	5.1		48
50	5.3	5.1	5.5	5.2	5.2	5.1	4.7	4.8	4.6	4.8		50
52	5.1	4.8	5.2	4.7	4.9	4.8	4.4	4.5	4.3	4.6		52
54	4.8	4.4	4.9	4.3	4.6	4.6	4.3	4.3	4.0	4.3		54
56	4.6	3.9	4.5	3.8	4.3	4.3	4.1	4.0	3.7	3.9		56
58	4.3	3.4	4.2	3.3	3.8	3.8	3.7	3.7	3.5	3.5		58
60	4.0	3.0	4.0	2.9	3.4	3.3	3.3	3.6	3.2	3.1		60
62	3.6	2.6	3.6	2.5	3.1	2.9	2.9	3.2	2.9	2.9		62
64	3.2	2.2	3.2	2.1	2.7	2.6	2.5	2.8	2.5	2.4		64
66			2.8	1.7	2.4	2.2	2.1	2.4	2.2	2.2		66
68					2.0	1.9	1.8	2.1	1.8	1.9		68
70					1.7	1.5	1.5	1.8	1.5	1.6		70
组合Code	1222222	2222221	1222223	3222221	2222222	3222222	3332222	2233333	3333332	3333333	组合Code	
吊钩 Hook block	75	75	75	75	75	75	75	75	75	75	吊钩 Hook block	
倍率n	2	2	2	2	2	2	2	2	2	2	倍率n	

起重性能表

Lifting capacities

T 14.8~38.9m

m	14.8-38.9m														m
	14.8	19.6	19.6	19.6	19.6	19.6	24.4	24.4	24.4	24.4	24.4	29.2	29.2		
3	142.0	70.0	135.0	135.0	136.0	136.0									3
3.5	141.0	66.3	132.0	132.0	133.0	133.0	46.0	68.2	116.0	120.0	120.0				3.5
4	131.0	62.6	128.0	127.0	127.0	126.0	44.0	65.0	108.5	117.0	120.0				4
4.5	121.0	59.5	119.0	118.0	117.0	117.0	41.6	63.0	101.0	110.0	114.0	42.4	43.5		4.5
5	112.0	57.0	110.0	109.0	108.0	107.0	39.0	59.5	93.5	104.0	104.0	40.0	41.0		5
6	93.0	52.0	94.0	92.0	92.0	91.0	35.0	56.0	86.0	92.0	88.0	37.0	37.5		6
7	78.0	48.0	80.0	79.0	78.0	77.0	32.0	52.4	78.5	80.0	77.0	34.0	34.0		7
8	60.1	44.0	62.7	60.7	59.5	58.0	29.0	47.6	65.0	63.6	58.0	31.0	30.5		8
9	47.2	42.0	49.6	47.8	46.7	45.4	28.6	44.0	51.7	50.4	45.3	27.5	27.0		9
10	38.3	39.5	40.6	38.9	37.8	36.6	26.2	40.0	42.5	41.3	36.6	25.0	24.5		10
12		30.1	28.9	27.3	26.4	25.2	23.6	31.6	30.7	29.6	25.2	22.5	22.0		12
14		22.8	21.6	20.1	19.3	18.2	20.5	24.2	23.3	22.3	18.2	20.0	19.5		14
16							18.6	19.2	18.3	17.3	13.4	17.5	17.0		16
18							15.9	15.5	14.7	13.7	9.7	16.0	15.7		18
20												13.9	13.6		20
22												11.7	11.3		22
组合Code	0000000	0000001	0000100	0010000	0100000	1000000	0000002	0000011	0000110	0001100	1100000	0000012	0000021	组合Code	
吊钩 Hook block	150	150	150	150	150	150	150	150	150	150	150	150	150	吊钩 Hook block	
倍率n	15	14	14	14	14	14	12	12	12	12	12	10	10	倍率n	

m	14.8-38.9m														m
	29.2	29.2	29.2	34.0	34.0	34.0	34.0	34.0	34.0	34.0	34.0	38.9	38.9	38.9	
4.5	66.9	102.0	102.0												4.5
5	63.2	100.0	102.0												5
6	58.6	89.0	87.0	32.0	37.0	45.7	61.3	86.0	87.0	85.0					6
7	55.1	78.0	75.0	29.0	35.0	41.2	57.5	77.0	76.0	74.0	29.2	31.0	36.0		7
8	51.6	63.4	58.7	27.0	33.0	37.5	52.8	64.9	62.6	59.9	27.0	28.0	34.5		8
9	49.0	50.3	46.0	25.0	31.5	34.7	49.1	51.7	49.5	47.1	24.2	25.7	33.0		9
10	44.3	41.2	37.2	22.1	28.3	31.9	44.3	42.5	40.5	38.2	21.9	23.9	31.0		10
12	32.2	29.4	25.8	19.4	25.2	29.0	32.2	30.6	28.8	26.7	19.1	20.4	28.5		12
14	24.8	22.2	18.8	17.1	23.0	25.2	24.8	23.3	21.6	19.6	16.9	17.9	25.0		14
16	19.7	17.2	13.9	15.5	20.2	20.1	19.7	18.3	16.6	14.8	15.6	16.4	20.6		16
18	16.0	13.6	10.3	14.0	16.7	16.4	16.0	14.6	13.0	11.1	13.8	14.8	16.9		18
20	13.2	10.8	7.6	12.5	13.9	13.6	13.2	11.8	10.2	8.4	12.6	13.4	14.1		20
22	11.0	8.6	5.5	11.5	11.6	11.3	11.0	9.6	8.0	6.3	11.1	11.8	11.8		22
24				10.4	9.8	9.5	9.2	7.8	6.3	4.6	10.2	10.0	10.0		24
26				8.9	8.3	8.0	7.7	6.4	4.9	3.2	9.1	8.6	8.5		26
28											7.8	7.3	7.3		28
30											6.8	6.3	6.2		30
组合Code	0000111	0011100	1110000	0000022	0000121	0000211	0001111	0011110	0111100	1111000	0000122	0000221	0001112	组合Code	
吊钩 Hook block	150	150	150	150	150	150	150	150	150	150	75	75	75	吊钩 Hook block	
倍率n	10	10	10	9	9	9	9	9	9	9	7	7	7	倍率n	

起重性能表

Lifting capacities

T 38.9~48.5m

m	38.9-48.5m				9.19m×8.3m		360°		18t						m
	38.9	38.9	38.9	38.9	43.7	43.7	43.7	43.7	43.7	43.7	48.5	48.5			
7	44.0	60.1	73.5	73.0										7	
8	41.3	55.0	64.0	61.3	22.8	28.1	27.5	44.9	57.5	62.7	60.2			8	
9	38.1	50.9	50.9	48.3	21.0	25.9	25.3	41.3	52.1	49.6	47.4	21.3	23.4	9	
10	35.3	43.8	41.7	39.4	19.2	24.0	23.5	37.7	43.0	40.6	38.5	19.9	21.5	10	
12	30.2	31.8	29.9	27.8	16.5	20.9	19.9	31.5	31.0	28.9	27.0	17.1	18.6	12	
14	24.8	24.4	22.6	20.6	14.7	18.6	17.6	24.1	23.7	21.6	19.8	15.2	16.2	14	
16	19.7	19.3	17.6	15.7	12.9	16.4	15.8	19.0	18.7	16.7	15.0	13.3	14.3	16	
18	16.0	15.7	14.0	12.1	11.5	15.0	14.0	15.4	15.0	13.1	11.4	11.8	12.8	18	
20	13.2	12.8	11.2	9.3	10.6	13.6	12.6	12.5	12.2	10.3	8.6	10.9	11.4	20	
22	10.9	10.6	9.0	7.2	9.7	12.2	11.5	10.3	9.9	8.1	6.5	9.9	10.4	22	
24	9.1	8.8	7.2	5.4	8.8	10.4	9.9	8.5	8.2	6.4	4.8	9.0	9.5	24	
26	7.7	7.3	5.8	4.0	8.1	8.9	8.4	7.1	6.7	4.9	3.4	8.3	8.4	26	
28	6.5	6.1	4.6	2.9	7.4	7.7	7.2	5.8	5.5	3.8	2.2	7.8	7.1	28	
30	5.4	5.1	3.6	1.9	6.9	6.6	6.2	4.8	4.5	2.8	1.2	6.7	6.1	30	
32					6.0	5.7	5.3	3.9	3.6	1.9		5.8	5.2	32	
34					5.2	4.9	4.5	3.2	2.9	1.2		5.0	4.4	34	
36					4.5	4.3	3.8	2.5	2.2			4.4	3.8	36	
38												3.8	3.2	38	
40												3.2	2.6	40	
组合Code	0002111	0011111	0111110	1111100	0000222	0001122	0001221	0021111	0111111	1111110	2111100	0001222	0002221	组合Code	
吊钩 Hook block	75	75	75	75	75	75	75	75	75	75	75	75	75	吊钩 Hook block	
倍率n	7	7	7	7	6	6	6	6	6	6	6	6	6	倍率n	

起重性能表

T 48.5~53.3m

Lifting capacities

48.5-53.3m



m	48.5 48.5 48.5 48.5 48.5 53.3 53.3 53.3 53.3 53.3 53.3 53.3 53.3														m
	48.5	48.5	48.5	48.5	48.5	53.3	53.3	53.3	53.3	53.3	53.3	53.3	53.3		
9	27.5	34.0	46.3	50.9	48.6	20.0	23.9	26.4	26.0	35.8	34.8	45.5	42.0	9	
10	25.8	32.5	42.3	41.8	39.7	18.6	22.0	24.6	25.0	33.2	33.6	40.9	38.0	10	
12	23.2	30.0	30.4	30.0	28.0	16.0	19.0	21.0	22.8	29.5	30.9	29.1	27.8	12	
14	20.9	24.5	23.1	22.7	20.9	14.1	16.9	18.5	20.5	23.0	23.5	21.9	20.6	14	
16	18.5	19.5	18.1	17.7	16.0	12.6	14.8	16.5	18.8	18.0	18.5	16.9	15.7	16	
18	16.6	15.8	14.5	14.1	12.3	11.1	13.3	14.6	16.2	14.4	14.9	13.3	12.1	18	
20	14.1	13.0	11.6	11.3	9.5	10.1	11.8	12.9	13.4	11.5	12.1	10.5	9.3	20	
22	11.8	10.7	9.4	9.1	7.4	9.1	10.8	10.6	11.2	9.3	9.8	8.3	7.2	22	
24	10.0	8.9	7.7	7.3	5.7	8.3	9.5	8.8	9.4	7.5	8.1	6.6	5.4	24	
26	8.5	7.5	6.2	5.9	4.3	7.6	8.0	7.4	7.9	6.1	6.6	5.2	4.0	26	
28	7.3	6.2	5.0	4.7	3.1	7.1	6.8	6.2	6.7	4.9	5.4	4.0	2.9	28	
30	6.2	5.2	4.0	3.7	2.1	6.6	5.8	5.1	5.6	3.9	4.4	3.0	1.9	30	
32	5.3	4.3	3.1	2.8	1.2	5.7	4.9	4.3	4.7	3.0	3.5	2.1	1.0	32	
34	4.6	3.6	2.4	2.0		4.9	4.1	3.5	4.0	2.3	2.8	1.4		34	
36	3.9	2.9	1.7	1.4		4.2	3.5	2.8	3.3	1.6	2.1			36	
38	3.3	2.3	1.1			3.6	2.9	2.2	2.7	1.0	1.5			38	
40	2.8	1.8				3.1	2.3	1.7	2.2		1.0			40	
42						2.6	1.9	1.2	1.7					42	
44						2.2	1.4		1.3					44	
组合Code	0011122	0111112	0211111	1111111	2111110	0002222	0012221	0022211	0111122	0221111	1111112	2111111	2211110	组合Code	
吊钩 Hook block	75	75	75	75	75	75	75	75	75	75	75	75	75	吊钩 Hook block	
倍率n	6	6	6	6	6	5	5	5	5	5	5	5	5	倍率n	

起重性能表

Lifting capacities

T 58.1~62.9m

m	58.1-62.9m													m
	58.1	58.1	58.1	58.1	58.1	58.1	58.1	58.1	62.9	62.9	62.9	62.9	62.9	
10	18.2	20.6	23.4	23.6	27.6	25.0	32.3	35.0						10
12	16.5	17.8	20.6	20.9	23.9	23.0	28.9	28.8	17.3	19.7	20.3	21.0	19.6	12
14	14.7	15.8	18.6	18.5	21.0	21.0	22.2	21.6	15.8	18.0	19.0	19.8	19.0	14
16	13.0	13.9	16.6	16.7	18.1	19.0	17.2	16.6	14.4	16.2	16.9	17.3	18.4	16
18	11.6	12.4	15.3	14.9	14.5	15.4	13.6	13.0	13.1	14.8	15.2	14.8	15.6	18
20	10.6	11.4	13.6	13.0	11.6	12.5	10.8	10.2	11.9	13.4	12.8	12.0	12.8	20
22	9.7	10.4	11.3	10.8	9.4	10.3	8.6	8.0	10.9	11.3	10.6	9.7	10.6	22
24	8.8	9.2	9.5	9.0	7.7	8.5	6.9	6.3	9.7	9.5	8.8	8.0	8.8	24
26	8.1	7.8	8.1	7.5	6.2	7.1	5.4	4.9	8.3	8.0	7.3	6.5	7.3	26
28	7.3	6.6	6.8	6.3	5.0	5.9	4.2	3.7	7.0	6.8	6.1	5.3	6.1	28
30	6.3	5.5	5.8	5.3	4.0	4.8	3.2	2.7	6.0	5.8	5.1	4.3	5.1	30
32	5.4	4.6	4.9	4.4	3.1	4.0	2.4	1.8	5.1	4.9	4.2	3.4	4.2	32
34	4.6	3.9	4.1	3.6	2.4	3.2	1.6	1.1	4.3	4.1	3.4	2.7	3.4	34
36	3.9	3.2	3.5	3.0	1.7	2.5	1.0		3.7	3.4	2.8	2.0	2.7	36
38	3.3	2.6	2.9	2.4	1.2	1.9			3.1	2.8	2.2	1.4	2.2	38
40	2.8	2.1	2.4	1.8		1.4			2.5	2.3	1.7	0.9	1.6	40
42	2.3	1.6	1.9	1.4		1.0			2.1	1.8	1.2		1.2	42
44	1.9	1.2	1.5	1.0					1.6	1.4				44
46	1.5		1.1						1.3	1.0				46
48	1.2								0.9					48
组合Code	0012222	0022221	0111222	0112221	0222111	1111122	1221111	2211111	0022222	0112222	0122221	0222211	1111222	组合Code
吊钩 Hook block	75	75	75	75	75	75	75	75	75	75	75	75	75	吊钩 Hook block
倍率n	4	4	4	4	4	4	4	4	3	3	3	3	3	倍率n

起重性能表

Lifting capacities

T 62.9~72.5m



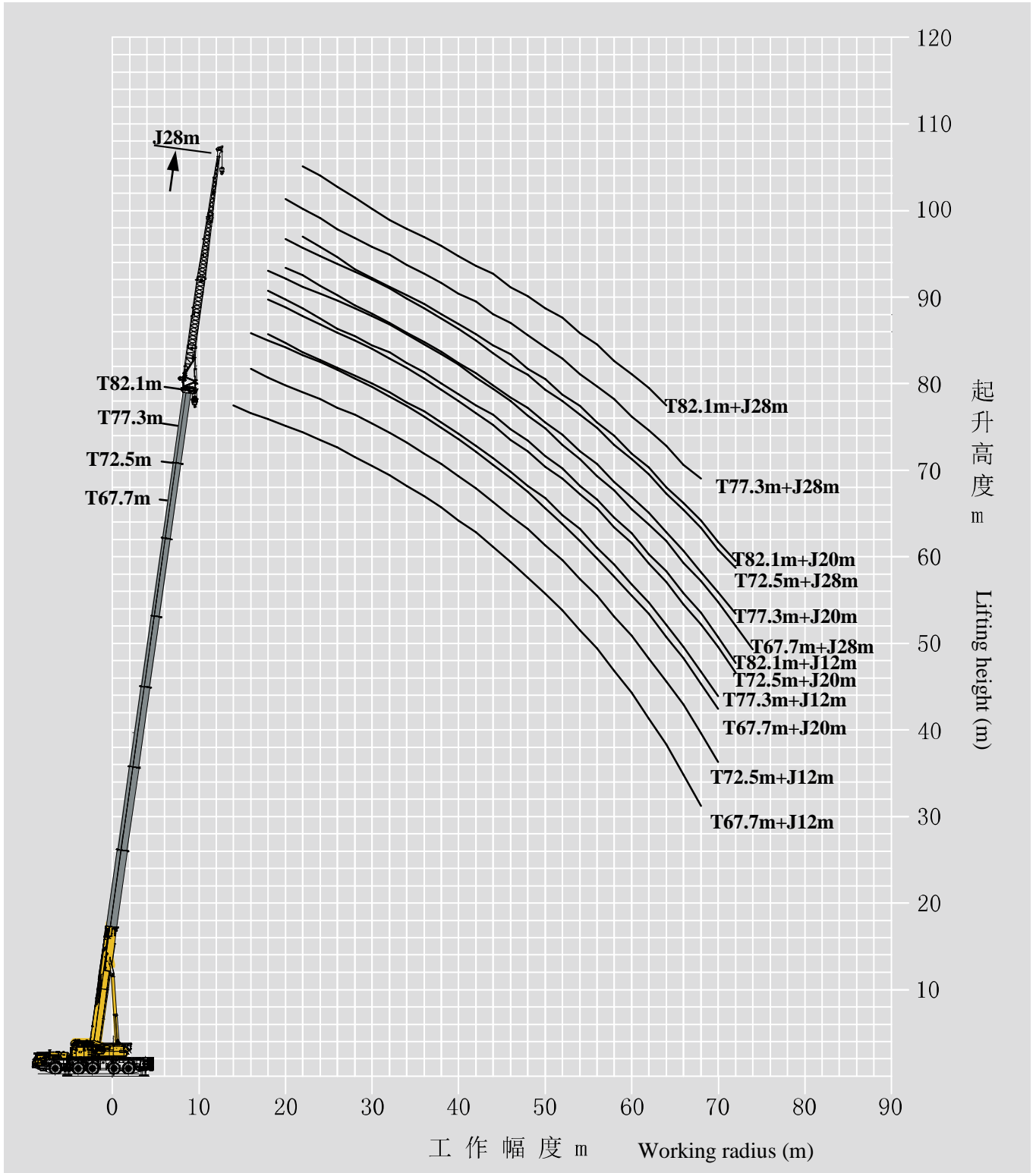
m	62.9 62.9 62.9 67.7 67.7 67.7 67.7 67.7 67.7 72.5 72.5 72.5 72.5														m
	62.9	62.9	62.9	67.7	67.7	67.7	67.7	67.7	67.7	72.5	72.5	72.5	72.5		
12	23.1	24.0	26.1												12
14	22.1	21.3	21.5	16.2	16.5	17.9	19.1	19.4	19.7	14.8	15.4	15.5	15.8	14	
16	18.7	17.4	16.6	15.5	15.5	17.2	18.4	17.8	16.8	14.4	15.0	15.2	15.8	16	
18	15.1	13.8	13.0	14.4	13.9	15.7	15.0	14.2	13.2	14.3	14.9	14.6	13.6	18	
20	12.3	11.0	10.2	13.1	12.4	12.8	12.1	11.3	10.4	12.9	12.6	11.8	10.8	20	
22	10.0	8.8	8.0	11.1	10.2	10.6	9.9	9.1	8.2	10.7	10.4	9.6	8.6	22	
24	8.3	7.0	6.3	9.3	8.4	8.8	8.1	7.4	6.5	8.9	8.6	7.8	6.8	24	
26	6.8	5.6	4.9	7.8	6.9	7.3	6.7	5.9	5.1	7.4	7.2	6.3	5.4	26	
28	5.6	4.4	3.7	6.6	5.7	6.1	5.5	4.7	3.9	6.2	5.9	5.1	4.2	28	
30	4.6	3.4	2.7	5.5	4.7	5.1	4.4	3.7	2.9	5.2	4.9	4.1	3.2	30	
32	3.7	2.5	1.8	4.7	3.8	4.2	3.6	2.8	2.0	4.3	4.0	3.2	2.3	32	
34	2.9	1.8	1.1	3.9	3.1	3.4	2.8	2.1	1.3	3.5	3.3	2.5	1.6	34	
36	2.3	1.1		3.2	2.4	2.8	2.1	1.4		2.8	2.6	1.8	0.9	36	
38	1.7			2.6	1.8	2.2	1.6	0.9		2.3	2.0	1.3		38	
40	1.2			2.1	1.3	1.7	1.0			1.7	1.5			40	
42				1.6		1.2				1.3	1.0			42	
44				1.2										44	
组合Code	1112221	1222111	2221111	0122222	0222221	1112222	1122221	1222211	2222111	0222222	1122222	1222221	2222211	组合Code	
吊钩 Hook block	75	75	75	75	75	75	75	75	75	75	75	75	75	吊钩 Hook block	
倍率 _n	3	3	3	2	2	2	2	2	2	2	2	2	2	倍率 _n	

起重性能表

T 77.3~88m

Lifting capacities

m	77.3-88m T										m	
	77.3	77.3	78.2	78.2	82.1	83.0	84.7	86.3	87.2	88.0		
14	12.7	12.5										14
16	12.6	12.5	11.5	12.0								16
18	12.4	12.5	11.4	12.0	9.3	9.0						18
20	12.3	11.2	11.3	11.1	9.3	9.0	8.4	7.6	7.3	7.2		20
22	10.1	9.0	10.1	8.9	9.3	9.0	8.4	7.6	7.2	7.0		22
24	8.3	7.3	8.4	7.2	7.8	7.7	7.6	7.6	7.1	6.8		24
26	6.8	5.8	6.9	5.7	6.3	6.2	6.2	6.5	6.3	6.3		26
28	5.6	4.6	5.7	4.5	5.1	5.0	5.0	5.3	5.1	5.1		28
30	4.6	3.6	4.7	3.5	4.1	4.0	4.0	4.3	4.1	4.1		30
32	3.7	2.8	3.8	2.7	3.2	3.1	3.1	3.4	3.2	3.3		32
34	3.0	2.0	3.0	1.9	2.5	2.4	2.3	2.6	2.4	2.5		34
36	2.3	1.3	2.4	1.3	1.8	1.7	1.7	2.0	1.8	1.8		36
38	1.7		1.8		1.2	1.1	1.1	1.4	1.2	1.3		38
40	1.2		1.3					0.9				40
组合Code	1222222	2222221	1222223	3222221	2222222	3222222	3332222	2233333	3333332	3333333	组合Code	
吊钩 Hook block	75	75	75	75	75	75	75	75	75	75	吊钩 Hook block	
倍率n	2	2	2	2	2	2	2	2	2	2	倍率n	



起重性能表

Lifting capacities

J 12m

m	67.7-82.1m T	12m J	9.19m×8.3m	360°	76t	m
	67.7	72.5	77.3	82.1		
12 m	12 m	12 m	12 m	12 m		
14	10.9				14	
16	10.9	9.4			16	
18	10.8	9.3	7.4	5.8	18	
20	10.5	9.1	7.4	5.8	20	
22	10.2	9.1	7.4	5.8	22	
24	9.8	9.0	7.3	5.7	24	
26	9.5	8.7	7.3	5.6	26	
28	9.3	8.5	7.2	5.6	28	
30	9.0	8.2	7.0	5.6	30	
32	8.6	8.0	6.8	5.6	32	
34	8.1	7.3	6.6	5.6	34	
36	7.5	6.7	6.2	5.6	36	
38	7.0	6.2	5.9	5.4	38	
40	6.3	5.8	5.5	5.2	40	
42	6.1	5.3	5.1	4.9	42	
44	5.5	5.1	4.8	4.7	44	
46	5.1	4.6	4.3	4.3	46	
48	4.5	4.3	4.1	4.1	48	
50	4.0	4.1	3.8	3.8	50	
52	3.6	3.6	3.5	3.5	52	
54	3.2	3.2	3.3	3.2	54	
56	2.8	2.8	3.0	3.1	56	
58	2.5	2.4	2.6	2.8	58	
60	2.0	2.1	2.4	2.5	60	
62	1.7	1.8	2.1	2.2	62	
64	1.4	1.5	1.7	2.0	64	
66	1.1	1.3	1.5	1.7	66	
68	1.0	1.1	1.2	1.4	68	
70		1.0	1.0	1.2	70	
72				1.0	72	
组合Code	2222111	2222211	2222221	2222222	组合Code	
吊钩 Hook block	11t	11t	11t	11t	吊钩 Hook block	
倍率n	2	1	1	1	倍率n	

起重性能表

Lifting capacities

J 20m

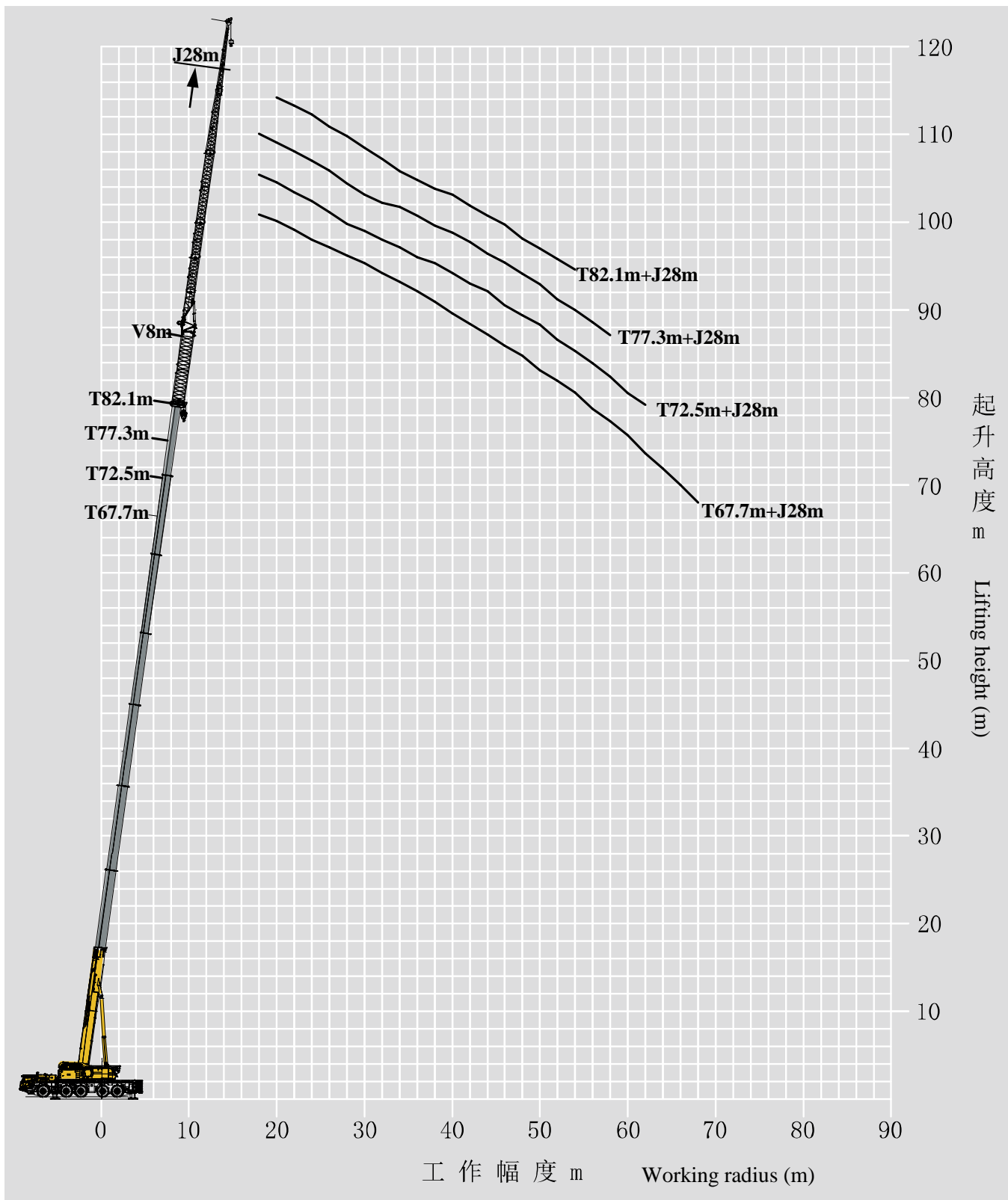
m	67.7-82.1m T	20m J	9.19m×8.3m	360°	76t	m
	67.7	72.5	77.3	82.1		
	20 m	20 m	20 m	20 m	20 m	
16	6.0					16
18	6.0	5.4				18
20	6.0	5.4	4.7			20
22	6.0	5.4	4.7	4.3		22
24	6.0	5.4	4.7	4.3		24
26	5.9	5.4	4.7	4.3		26
28	5.8	5.4	4.7	4.3		28
30	5.6	5.4	4.7	4.3		30
32	5.4	5.4	4.7	4.3		32
34	5.0	5.2	4.7	4.3		34
36	4.8	5.0	4.7	4.2		36
38	4.4	4.8	4.6	4.2		38
40	4.2	4.5	4.5	4.2		40
42	4.0	4.3	4.4	4.1		42
44	3.8	4.0	4.2	4.0		44
46	3.6	3.8	4.0	3.8		46
48	3.5	3.7	3.8	3.7		48
50	3.3	3.6	3.6	3.4		50
52	3.2	3.4	3.3	3.3		52
54	3.0	3.3	3.1	3.0		54
56	2.9	3.0	2.9	2.8		56
58	2.8	2.8	2.5	2.5		58
60	2.5	2.5	2.5	2.5		60
62	2.2	2.2	2.2	2.2		62
64	2.0	1.9	2.0	2.1		64
66	1.6	1.8	1.7	1.9		66
68	1.4	1.4	1.6	1.7		68
70	1.2	1.2	1.4	1.4		70
72		1.0	1.2	1.2		72
组合Code	2222111	2222211	2222221	2222222		组合Code
吊钩 Hook block	11t	11t	11t	11t		吊钩 Hook block
倍率n	1	1	1	1		倍率n

起重性能表

Lifting capacities

J 28m




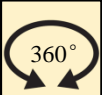
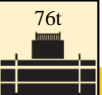
m	67.7-82.1m T	28m J	9.19m×8.3m	360°	76t	m
	67.7	72.5	77.3	82.1		
	28 m	28 m	28m	28 m		
18	4.4					18
20	4.2	4.1	3.7			20
22	4.2	4.0	3.6	3.0		22
24	4.1	3.9	3.5	3.0		24
26	4.0	3.8	3.4	2.9		26
28	3.9	3.8	3.3	2.9		28
30	3.8	3.6	3.3	2.9		30
32	3.7	3.5	3.2	2.8		32
34	3.7	3.5	3.2	2.8		34
36	3.6	3.4	3.1	2.8		36
38	3.5	3.3	3.1	2.8		38
40	3.5	3.3	3.1	2.8		40
42	3.3	3.2	3.0	2.7		42
44	3.2	3.2	2.9	2.7		44
46	3.0	3.1	2.8	2.7		46
48	2.9	3.0	2.8	2.7		48
50	2.8	3.0	2.7	2.6		50
52	2.8	2.8	2.6	2.5		52
54	2.6	2.8	2.6	2.5		54
56	2.5	2.7	2.5	2.3		56
58	2.5	2.5	2.3	2.2		58
60	2.3	2.3	2.1	2.2		60
62	2.3	2.1	2.0	1.9		62
64	2.1	2.0	1.8	1.8		64
66	1.8	1.7	1.7	1.6		66
68	1.7	1.6	1.5			68
70	1.5	1.3				70
72	1.3	1.2				72
74	1.0					74
组合Code	2222111	2222211	2222221	2222222	组合Code	
吊钩 Hook block	11t	11t	11t	11t	吊钩 Hook block	
倍率n	1	1	1	1	倍率n	



起重性能表

Lifting capacities

I 8m

m	    				m
	67.7+8 m	72.5+8 m	77.3+8 m	82.1+8 m	
	28 m	28 m	28m	28 m	
18	3.7	3.3	3.0		18
20	3.7	3.3	2.9	2.1	20
22	3.7	3.3	2.9	2.1	22
24	3.7	3.3	2.9	2.1	24
26	3.7	3.3	2.9	2.0	26
28	3.6	3.2	2.9	2.0	28
30	3.5	3.1	2.9	2.0	30
32	3.4	3.1	2.8	2.0	32
34	3.4	3.1	2.8	1.9	34
36	3.3	3.0	2.8	1.9	36
38	3.3	2.9	2.7	1.9	38
40	3.2	2.9	2.7	1.9	40
42	3.2	2.8	2.6	1.9	42
44	3.1	2.8	2.6	1.9	44
46	3.0	2.8	2.6	1.8	46
48	2.9	2.7	2.5	1.8	48
50	2.7	2.6	2.5	1.8	50
52	2.7	2.6	2.4	1.8	52
54	2.6	2.5	2.2	1.8	54
56	2.5	2.3	2.0	1.8	56
58	2.4	2.1	1.9		58
60	2.2	2.0			60
62	2.0	1.7			62
64	1.8				64
66	1.7				66
68	1.4				68
组合Code	2222111	2222211	2222221	2222222	组合Code
吊钩 Hook block	11t	11t	11t	11t	吊钩 Hook block
倍率n	1	1	1	1	倍率n

主要技术参数表

Table of main technical parameters

类别 Category	项目 Item	单位 Unit	参数 Parameter		
尺寸参数 Dimensions	外形尺寸 (长×宽×高) Dimensions (length×width×height)	mm	16203×3000×4000		
	轴距 Axle spacing	mm	2650+1650+2900+1650		
	轮距 (前/后) Track (Front/ Rear)	mm	2590/2590/2590/2590/2590		
	前悬/后悬 Front/ Rear overhang	mm	2664/2289		
	前伸/后伸 Front/ Rear extension	mm	2400/0		
重量参数 Weight	最大允许总质量 Max. permissible total weight	kg	54000		
	轴荷 Axle load	一轴 1st axle	kg	9300	
		二轴 2nd axle	kg	9900	
		三轴 3rd axle	kg	11700	
		四轴 4th axle	kg	11600	
	五轴 5th axle	kg	11500		
动力参数 Power	发动机型号 Engine model	—	(底盘 Chassis) WP13.550E62	(上车 Superstructure) WP7G300E473	
	额定功率/转速 Rated power/rpm	kW/(r/min)	405/1900	221/2200	
	最大净功率/转速 Max. net power/rpm	kW/(r/min)	400/1900	221/2200	
	最大扭矩/转速 Max. torque/rpm	N.m/(r/min)	2500 / 950~1400	1200/1400-1600	
行驶参数 Travel	行驶速度 Travel speed	最高车速 Max. travel speed	km/h	80	
		最低稳定车速 Min. stable travel speed	km/h	3	
	转弯直径 Turning diameter	最小转弯直径 Min. turning diameter	m	≤18.5 (小转弯模式 tight-turning mode)	
		臂头最小转弯直径 Min. turning diameter at boom head	m	≤24.4 (小转弯模式 tight-turning mode)	
	最小离地间隙 Min. ground clearance		mm	307	
	接近角 Approach angle		°	18	
	离去角 Departure angle		°	14	
	制动距离 (制动初速度为30km/h) Braking distance (at 30 km/h)		m	≤10	
	最大爬坡能力 Max. grade ability		%	65	
	百公里油耗 Fuel consumption per 100 km		L	70	
噪音 Noise	加速行驶机外噪声 Exterior noise level during acceleration travel	dB(A)	≤88		
	驾驶员耳旁噪声 Noise level at seated position	dB(A)	≤90		

主要技术参数表

Table of main technical parameters

类别 Category	项目 Item		单位 Unit	参数 Parameter	
主要性能参数 Main performance	最大额定总起重量 Max. total rated lifting capacity		t	200	
	最小额定工作幅度 Min. rated working radius		m	3	
	转台尾部回转半径 Turning radius at turntable tail	平衡重处 Counterweight	mm	5250	
		副卷处 Auxiliary winch	mm	4993	
	最大起重力矩 Max. load moment	基本臂 Base boom	kN.m	6586	
		最长主臂 Fully-extended boom	kN.m	2479	
		最长主臂+副臂 Fully-extended boom + Jib	kN.m	988	
	支腿跨距 Outrigger span	纵向 Longitudinal	m	9.19	
		横向 Lateral	m	8.3	
	起升高度 Hoist height	基本臂 Base boom	m	14.8	
		最长主臂 Fully-extended boom	m	83.4	
		最长 (主臂+副臂) Fully-extended boom + Jib	m	115	
	起重臂长度 Boom length	基本臂 Base boom	m	14.8	
		最长主臂 Fully-extended boom	m	88	
最长 (主臂+副臂) Fully-extended boom + Jib		m	118.1		
副臂安装角 Jib offset angle		°	0, 20, 40		
工作速度参数 Working speed	起重臂起臂时间 Boom raising time		s	≤65	
	起重臂全伸时间 Boom fully extending time		s	≤960	
	最大回转速度 Max. slewing speed		r/min	≥1.5	
	支腿收放时间 Outrigger extending and retracting time	水平支腿 (单边收放) Outrigger beam (Extending and retracting at one side)	收 Retracting	s	≤40
			放 Extending	s	≤40
		垂直支腿 Outrigger jack	收 Retracting	s	≤40
			放 Extending	s	≤80
起升速度 (单绳,第四层,空载) Hoisting speed (single line, 4th layer, no load)	主起升机构 Main winch		m/min	≥130	
	副起升机构 Auxiliary winch		m/min	≥130	
噪声 Noise	机外辐射 Exterior noise level		dB (A)	≤111	
	司机位置处 Noise level at seated position		dB (A)	≤85	

符号标识

Description of symbols

常规标识

General symbols

	上车 Superstructure		底盘 Chassis
	起重能力 Lifting capacity		车桥 Axle
	吊臂长度 Boom length		行驶速度 Driving speed
	工作幅度 Radius		爬坡能力 Grade ability
	吊臂仰角 Boom angle		轮胎 Tires
	主臂起升高度 Hoist height with boom		支腿 Outriggers
	固定副臂长度 Fixed jib length		吊钩 Hook block
	副臂安装角 Jib offset angle		平衡重 Counterweight
	副臂起升高度 Hoist height with jib		卷扬 Winch
	独立臂头或风电臂 Independent jib head /Wind power jib		360°全回转 360° operation of the boom
	变幅副臂 Luffing jib		超起 Super lift

注意事项

Notes

1. 本手册仅供参考，所有信息均仅供说明，不应依赖它去操作起重机，起重机的正确操作说明请参见操作手册和额定起重量手册
2. 表中所列起重量单位均为公吨 (t)，是当前臂长及幅度下，起重机在稳固、水平表面上能够保证的最大总起重量，包括吊钩和吊具的重量，吊重时必须减去上述装置的重置。
3. 表中的工作幅度为起吊重物离地时起重物到起重机回转轴线的水平距离。
4. 应按主臂仰角范围作业，即使是空载，也不应使主臂仰角处于范围外。
5. 只允许在5级（瞬时风速14.1m/s，风压125N/m²）风以下进行作业。

1. The manual is intended as reference only. See Operation Manual and Rated Lifting Capacity Manual for correct operation instructions.
2. The total rated loads given in the rated load charts are the maximum lifting capacity (in metric ton) under corresponding boom length and radius when the crane is set up on firm and level ground, which includes the weight of the hook block and slings. The weight of above-mentioned devices should be deducted from the rated lifting load.
3. The working radius shown in the rated load charts is the horizontal distance between the load and slewing axis of crane when the load is lifted off the ground.
4. Observe the boom angle limit. Never operate the crane with the boom angle beyond the recommended limit even if a load is not being carried.
3. A lifting operation is permissible only when the wind force is below grade 5 (instantaneous wind speed is 14.1 m/s, wind pressure is 125 N/m²).



地址：江苏省徐州市经济技术开发区高新路68号
Add: No. 68 Gaoxin Road, Economic and Technological
Development Zone, Xuzhou, Jiangsu, China
电话(Tel): +86-516-83462242/83462350
质量监督电话(Quality Inquiry Tel): +86-516-87888268
备件电话(Spare Parts Tel): +86-516-83461542
邮编(Post Code): 221004
网址(Web): www.xcmg.com/qizhongji

服务热线 Service Tel

400-110-9999

400-001-5678



本印刷品不属于合同。出于产品不断改进的需要，我们保留对产品型号、参数、配置进行变更的权利，恕不另行通知。图片仅供参考，具体产品以实物为准。图片中产品可能并非标准配置，部分部件可能需要另行购置。办理牌照和上路行驶需遵守当地法规。

This print does not belong to the contract. We reserve the right to modify the design (such as product model, parameters and configuration) without notice for improvement. The pictures are just for reference. The product in the picture may not be standard configuration. Some parts need to be purchased separately. Conform to the local laws for license application and road traveling.