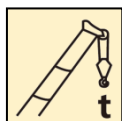


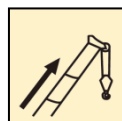
XCT85 汽车起重机 / Truck Crane

技术规格书

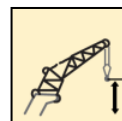
Basic technical specification



85 t



68 m



87m

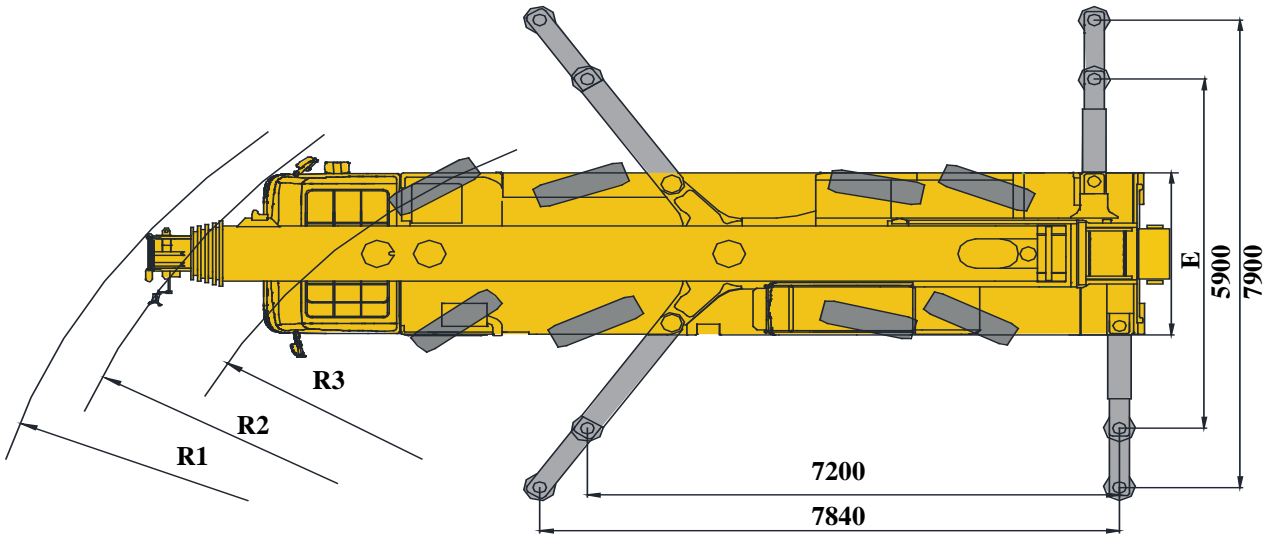
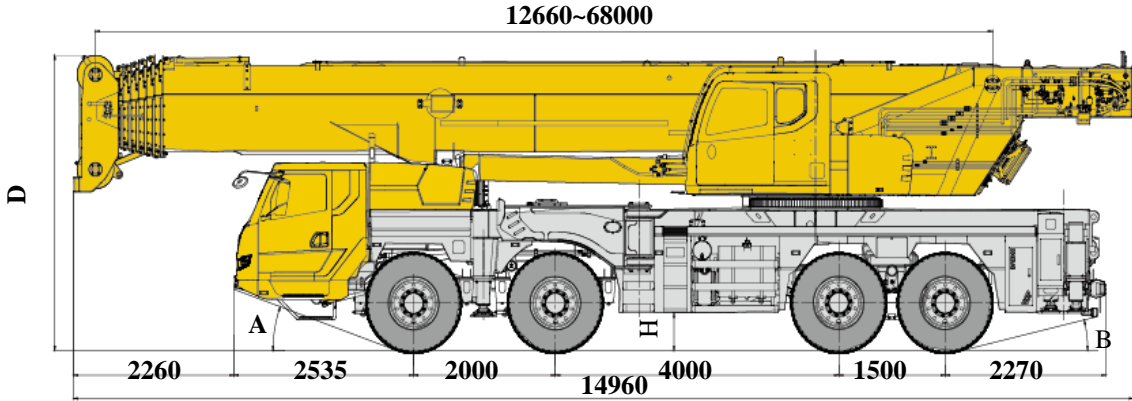


2020年9月第3版

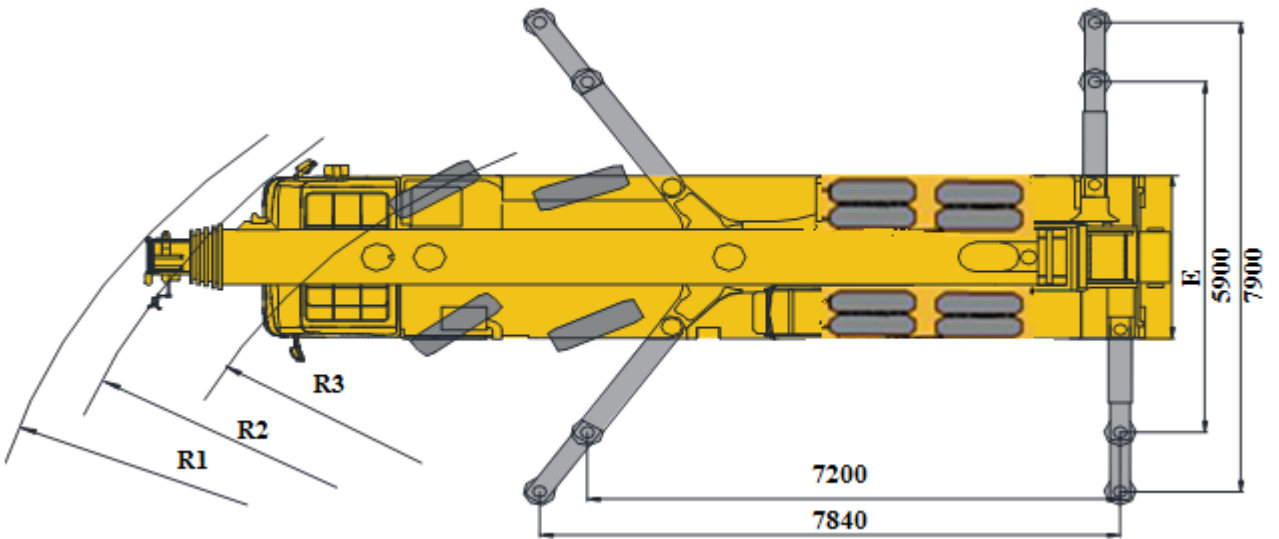
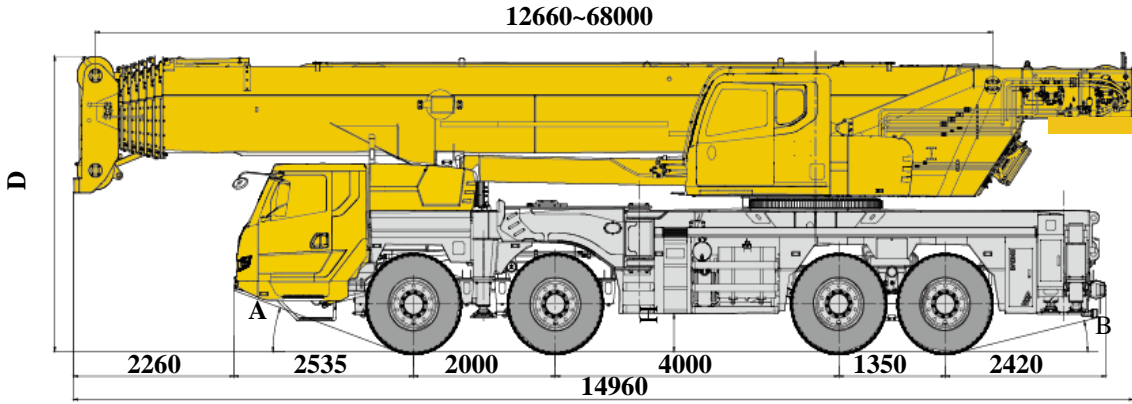
目录

Contents

目录	
Contents	
尺寸参数 Dimensions	4-5
技术规格 Technical specifications	6-12
重量/作业速度 Weight / Working speeds	13-14
平衡重 Counterweight	15-16
运输部件尺寸 Transportation components dimension	17
臂架组合方案 Boom / Jib combinations	18-19
工作范围及起重能力 Working ranges and lifting capacities	
主臂 Boom	20-23
副臂 Jib	24-27
符号标识 Description of symbols	28
主要技术参数表 Main Technical Data	29-30
注意事项 Notes	31



	A	B	D	E	R1	R2	R3	H
385/95 R 25	20°	14°	3990	2750	12500	11500	10000	367



	A	B	D	E	R1	R2	R3	H
385/95 R25 12.00R24	20°	13°	3990	2750	14700	13600	12000	303

技术规格

Technical specifications



底盘

全桥转向 配置

车架 徐工设计、制造，全覆盖式走台板，防扭转箱型结构，高强度钢材制造。 ●

支腿 4支腿，前双节摆腿后水平支腿结构，水平伸缩和垂直伸缩由液压控制，底盘两侧装有电控操纵控制台，控制台板装有水平仪、照明灯和调速按钮，支腿油缸均设有单向阀，且垂直支腿带有双向液压锁。 ●
支脚盘尺寸：360mm×450mm
最大起重量时支腿反力：700kN

发动机 MC11.40-50，直列六缸水冷电控柴油发动机，重汽曼制造，额定功率297kW/1900rpm，最大扭矩1900Nm/1000-1400rpm，国五排放标准。 ●
燃油箱容积：320L。

MC11.40-60，直列六缸水冷电控柴油发动机，重汽曼制造，额定功率297kW/1900rpm，最大扭矩1907Nm/1000-1400rpm，国六排放标准。 ○
燃油箱容积：320L。

变速箱 陕齿机械式变速箱，10个前进档，2个倒档，带同步器。 ●

车桥 名牌厂家高强度车桥，1,2桥转向，3,4桥转向驱动。 ●

悬挂 前悬架采用板簧悬架，后悬架采用双纵臂板簧平衡悬架。 ●

轮胎 8个轮胎，1个备胎，每桥均装单胎，双钱/泰凯英制造。 ●
轮胎规格：385/95R25

制动 行车制动：双回路气压制动，作用于所有车轮。 ●
驻车制动：弹簧储能制动，作用于2,3,4轴车轮。
辅助制动：发动机排气制动和缓速制动。

转向 全桥转向，1、2桥机械转向+液压力，3/4桥缸控随动转向，可适应多种工况的要求，实现多种转向模式。 ●

驾驶室 新型复合结构驾驶室，全封闭、装备豪华舒适。性能上：优越的密封性和防腐、防震设计；配置大视野的前挡风安全玻璃、后视镜，电控洗涤器、电子门窗升降器，带有除霜风挡的室内空气加热器，收放音机、丝网地垫等。副驾双座椅，可展开为简易卧铺。2公斤灭火器；标配冷暖空调。 ●

电气系统 直流24伏特，串联12伏特的电池组2个。 ●
发电机，28伏特-80安培。

技术规格

Technical specifications



底盘


双前桥转向 配置

车架	徐工设计、制造，全覆盖式走台板，防扭转箱型结构，高强度钢材制造。	●
支腿	4支腿，前双节摆腿后水平支腿结构，水平伸缩和垂直伸缩由液压控制，底盘两侧装有电控操纵控制台，控制台板装有水平仪、照明灯和调速按钮，支腿油缸均设有单向阀，且垂直支腿带有双向液压锁。 支脚盘尺寸：360mm×450mm 最大起重量时支腿反力：700kN	●
发动机	MC11.40-50，直列六缸水冷电控柴油发动机，重汽曼制造，额定功率297kW/1900rpm，最大扭矩1900Nm/1000-1400rpm，国五排放标准。 燃油箱容积：320L。 MC11.40-60，直列六缸水冷电控柴油发动机，重汽曼制造，额定功率297kW/1900rpm，最大扭矩1907Nm/1000-1400rpm，国六排放标准。 燃油箱容积：320L。	● ○
变速箱	陕齿机械式变速箱，10个前进档，2个倒档，带同步器。	●
车桥	名牌厂家高强度车桥，1,2桥转向，3,4桥驱动。	●
悬挂	前悬架采用板簧悬架，后悬架采用橡胶悬架。	●
轮胎	12个轮胎，1个备胎，1、2桥均装单胎，3、4桥均装双胎。轮胎规格：385/95R25（前桥）；12.00R24（后桥）	●

制动	行车制动：双回路气压制动，作用于所有车轮。 驻车制动：弹簧储能制动，作用于2,3,4轴车轮。 辅助制动：发动机排气制动和缓速制动。	●
转向	双前桥转向，1、2桥机械转向+液压助力。	●
驾驶室	新型复合结构驾驶室，全封闭、装备豪华舒适。性能上：优越的密封性和防腐蚀、防震设计；配置大视野的前挡风安全玻璃、后视镜，电控洗涤器、电子门窗升降器，带有除霜风挡的室内空气加热器，收放音机、丝网地垫等。副驾双座椅，可展开为简易卧铺。2公斤灭火器；标配冷暖空调。	●
电气系统	直流24伏特，串联12伏特的电池组2个。 发电机，28伏特-80安培。	●

技术规格

Technical specifications

	上车	配置
结构	徐工设计、制造，高强度钢材制造。	●
液压系统	电比例变量泵用于起升、变幅、伸缩；回转采用闭式泵驱动；比例电磁换向控制阀；风冷式液压油散热器；液压油箱有效容积：627L	●
操纵方式	电比例操纵，无级调速，由左右2个操纵手柄控制起重机的主要动作。	●
主起升机构	液压控制调速，由液压马达通过行星齿轮减速器驱动，内置常闭式制动器并带有平衡阀，装有绳槽卷筒。	●
副起升机构	液压控制调速，由液压马达通过行星齿轮减速器驱动，内置常闭式制动器并带有平衡阀，装有绳槽卷筒。	●
回转机构	单排四点接触球外齿式回转支承，由液压马达通过行星齿轮减速器驱动，内置常闭式制动器，可连续回转360°，具有动力控制或自由滑转的功能，可无级调速。	●
变幅机构	单变幅油缸，带有负载补偿功能的变幅平衡阀，变幅下落采用平衡阀外控式重力+动力下降方式。	●
操纵室	钢制操纵室，无视野死角的前景窗，安全玻璃，推拉式车门，可调式电加热功能座椅，可翻仰20°，装有前窗顶窗遮阳帘、顶窗双层遮阳帘，后窗遮阳帘；雨刮器、顶部防护栏、推拉踏板，配备力矩限制器、人机交互系统控制面板、电控扶手箱、发动机动力加速踏板、发动机起动开关等。标配冷暖空调、2kg灭火器。	●
安全装置	液压平衡阀；液压溢流阀；液压双向锁；力矩限制器；三圈保护器；起升高度限位器；风速仪；卷扬监视装置	●
组合配重	总重33t，有33t、24.6t、15t、8t、0t共5种组合方式。（全桥转向） 有33t、24.6t、15t、10t、2t共5种组合方式。（双前桥转向）	●

起重钩	85t钩	●
	55t钩	●
	7t钩	●

	臂架系统	配置
主臂	7节，“U”形截面的筒形焊接结构，单板式臂头、紧凑式臂尾。单缸插销伸缩机构 主臂长度：12.66m~68m。	●
副臂	由连接架、旋转架和两节桁架结构折叠式副臂组成，具有0°、15°、30°三种安装角，收存于主臂旁。 副臂长度：10.5m、17.5m	●
臂端单滑轮	单滑轮，安装在主臂顶端，用于单股钢丝绳起重作业，起重性能与主臂相同，但最大起重量不超过6.5t。	●
主臂加长节	桁架式焊接结构，与主臂臂头固定安装 主臂加长节长度：7m	○


产品各部件明细如上所述，具体部件明细请参照产品报价单


符号说明：

- —— 表示标准配置；
- —— 表示选装配置。

技术规格


Technical specifications


	Chassis	All-wheel steering	Configuration
Frame	Designed and manufactured by XCMG, it is made of high strength steel with fully covered walking surface and anti-torsion box-typed structure.		●
Outrigger	Four outriggers; front two-stage outrigger beams are swung, and rear outrigger beams are extended. Outrigger beams and jacks are hydraulically controlled. There is an outrigger control station located at each side of the chassis, and there is a level gauge, an illuminator and speed buttons on each control station. There is a check valve fitted in each outrigger cylinder, and a double-way hydraulic valve fitted in each jack cylinder. Float dimension: 360mm×450mm Reaction force of outrigger at max. lifting load: 700kN		●
Engine	MC11.40-50, in-line, 6-cylinder, water cooled, electric control diesel engine, made by SINOTRUK MAN, with rated power of 297kW/1900rpm and max. torque of 1900Nm/1000-1400rpm, compliant to China V emission standard. Fuel tank capacity: 320 L. MC11.40-60, in-line, 6-cylinder, water cooled, electric control diesel engine, made by SINOTRUK MAN, with rated power of 297kW/1900rpm and max. torque of 1907Nm/1000-1400rpm, compliant to China VI emission standard. Fuel tank capacity: 320 L.		● ○
Gearbox	Mechanical transmission 10JSD180TB, made by Shaanxi Fast Gear Co., Ltd., manual flexible shaft control, 10-forward speed and 2-reverse speed with a synchronizer.		●
Axles	Four-axle chassis, axles 1 and 2 are high strength load-bearing axles for steering, axles 3 and 4 are steering and driving, made by famous makers through adoption of foreign advanced technology		●

	Chassis	All-wheel steering	Configuration
Suspension	Leaf springs are adopted for front suspensions; dual longitudinal arm leaf spring balanced suspensions are adopted for rear suspensions.		●
Tires	8tires and 1 spare tire, each axle is equipped with single tire, manufactured by BRIDGESTONE, large bearing capacity. Tire specifications:385/95R25		●
Brakes	Service brake: double-circuit air pressure brake acting on all wheels. Parking brake: air-release brake, acting on wheels of axles 2, 3, 4. Auxiliary brake: engine exhaust brake, engine retarder brake		●
Steering	All-wheel steering, axles 1 and 2 are mechanically steered + hydraulic power assistance; axles 3 and 4 are steered through cylinder control. It is suitable for various demands of working conditions and several steering modes can be realized.		●
Driver's cab	New enclosed cab, luxury and comfort. It is designed to be leakproof, anti-corrosive and shockproof. It is equipped with a windshield offering outstanding visibility, electrical adjustable rear mirrors, electric control washer, electronic lifters of doors and windows, air heater with defrosting function, heater & air conditioner, radio player and new material mat, etc. A double-seat designed for the co-driver may be used as a berth for rest. A fire extinguisher of 2 kg is available. Heater and air conditioner are standard.		●
Electrical system	24V DC, two sets of 12 V battery in series. Generator: 28 V-80 A		●

技术规格


Technical specifications


	Chassis	Two-wheel steering	Configuration
Frame	Designed and manufactured by XCMG, it is made of high strength steel with fully covered walking surface and anti-torsion box-typed structure.		●
Outrigger	Four outriggers; front two-stage outrigger beams are swung, and rear outrigger beams are extended. Outrigger beams and jacks are hydraulically controlled. There is an outrigger control station located at each side of the chassis, and there is a level gauge, an illuminator and speed buttons on each control station. There is a check valve fitted in each outrigger cylinder, and a double-way hydraulic valve fitted in each jack cylinder. Float dimension: 360mm×450mm Reaction force of outrigger at max. lifting load: 700kN		●
Engine	MC11.40-50, in-line, 6-cylinder, water cooled, electric control diesel engine, made by SINOTRUK MAN, with rated power of 297kW/1900rpm and max. torque of 1900Nm/1000-1400rpm, compliant to China V emission standard. Fuel tank capacity: 320 L. MC11.40-60, in-line, 6-cylinder, water cooled, electric control diesel engine, made by SINOTRUK MAN, with rated power of 297kW/1900rpm and max. torque of 1907Nm/1000-1400rpm, compliant to China VI emission standard. Fuel tank capacity: 320 L.		● ○
Gearbox	Mechanical transmission 10JSD180TB, made by Shaanxi Fast Gear Co., Ltd., manual flexible shaft control, 10-forward speed and 2-reverse speed with a synchronizer.		●
Axles	Four-axle chassis, axles 1 and 2 are high strength load-bearing axles for steering, axles 3 and 4 are steering and driving, made by famous makers through adoption of foreign advanced technology		●
Suspension	Leaf springs are adopted for front suspensions; and rubber suspension is used as rear suspension.		●

	Chassis	Two-wheel steering	Configuration
Tires	12 tires and 1 spare tire, 1st and 2nd axles are equipped with single tire, 3rd and 4th axles are equipped with double-tire. Tire specifications: 385/95R25 (front axle) ; 12.00R24 (rear axle)		●
Brakes	Service brake: double-circuit air pressure brake acting on all wheels. Parking brake: air-release brake, acting on wheels of axles 2, 3, 4. Auxiliary brake: engine exhaust brake, engine retarder brake		●
Steering	Mechanical steering mechanism with a hydraulic booster for 1st and 2nd axles.		●
Driver's cab	New enclosed cab, luxury and comfort. It is designed to be leakproof, anti-corrosive and shockproof. It is equipped with a windshield offering outstanding visibility, electrical adjustable rear mirrors, electric control washer, electronic lifters of doors and windows, air heater with defrosting function, heater & air conditioner, radio player and new material mat, etc. A double-seat designed for the co-driver may be used as a berth for rest. A fire extinguisher of 2 kg is available. Heater and air conditioner are standard.		●
Electrical system	24V DC, two sets of 12 V battery in series. Generator: 28 V-80 A		●

技术规格


Technical specifications

 Superstructure	Configuration
Frame Designed and manufactured by XCMG, made of high strength steel.	●
Hydraulic system Electric proportional variable pump is used for lifting, elevating and telescoping operations. A closed pump is used to drive slewing operation. The proportional solenoid steering control valve; air-cooled hydraulic oil radiator. Effective volume of hydraulic oil tank: 627L	●
Operating mode The electric-proportional operation system is equipped with two levers at left and right sides controlling the main movements of the crane, and stepless slewing speed regulation is available.	●
Main winch system Hydraulic control is used for speed regulation. The system is driven by a hydraulic motor through a planetary gear reducer, with a normally closed brake, a balanced valve and a grooved drum equipped.	●
Auxiliary winch system Hydraulic control is used for speed regulation. The system is driven by a hydraulic motor through a planetary gear reducer, with a normally closed brake, a balanced valve and a grooved drum equipped.	●
Slewing system A single-row, four-point contact-ball external slewing bearing; the system is driven by a hydraulic motor through a planetary gear reducer with constant-closed brake equipped, and may continuously slew 360°. Power control and free slewing function as well as stepless speed regulation are available.	●
Elevating system Single elevating cylinder and the elevating counterbalance valve with the load compensation function. Balance valve-controlled boom gravity combined with power for lowering boom is used for boom elevating down.	●

 Superstructure	Configuration
Operator's cab Steel cab with a full-view windshield, safety glass, sliding door, adjustable seat with electric heating function; it can tilt backward about 20°; double-layer sun shield is adopted for roof window; sun shield is also equipped at the windshield and rear window; wipers, roof guardrails, pull-out step, LMI, human-machine interactive control panel, electric controlled armrest, engine accelerator pedal, engine start switch, etc. are also available. Heater, air conditioner and fire extinguisher of 2 kg are standard.	●
Safety devices Hydraulic counterbalance valve; hydraulic relief valve; hydraulic double-way valve; LMI; lowering limiter; anti-two block; anemometer; winch monitor	●
Combined counterweight Total weight is 33t. 5 counterweight combinations of 24.6t、15t、8t、0t and 33t are available. (all—wheel steering) combinations of 24.6t、15t、10t、2t and 33t are available. (two—wheel steering)	●
Hook block	●
85 t	●
55 t	●
7t	●

技术规格

Technical specifications

	Boom and jib	Configuration
Boom	7-section boom with U-shaped cross-section, welded structure with single-plate boom head and compact boom tail. Single-cylinder pinning telescoping system, Boom length: 12.66 m~68 m.	●
Jib	The jib consists of a connecting bracket, a rotating bracket and two lattice sections. Three offset angles of 0° , 15° and 30° are available. It is stowed along the side of the boom. Jib length: 10.5 m,17.5 m	●
Single top	Installed at the boom top, used for single line operation. Its lifting performance is the same as that for boom, but the max. lifting load could not exceed 6.5 t.	●
Boom extension	Lattice jib, welded structure, attached to boom head. Length of boom extension: 7 m	○

Product parts list is as mentioned above. Please refer to the product quotation for specific parts

● —Standard

○ —Optional

重量 Weight

全桥转向 All-wheel steering



Axle	1	2	3	4	总重量 Total weight
t	12	12	12	12	48




1) 上车不带起重吊钩、副臂、臂端单滑轮、平衡重；下车不带备胎及备胎支架；转向驱动形式：8×4×8；轮胎规格：385/95 R 25；
Hook block, jib, single top, counterweight are excluded from superstructure. Spare tire and spare tire bracket are excluded from chassis. Driving type: 8x8; Tire specification: 385/95 R 25








吊钩 Hook	倍率 No. of lines	吊钩重量 Weight kg	吊钩尺寸 Dimensions mm	备注 Remarks
85t	13	700	1735×554×520	单钩 Single hook , 标配 Standard
55t	8	470	1600×520×370	单钩 Single hook , 标配 Standard
7t	1	210	717×370×370	单钩 Single hook , 标配 Standard

作业速度 Working speeds



		
385/95 R 25	1 ~ 80	45%



作业机构 Drive	作业速度 Working speed	最大单绳拉力 Max. single line pull	钢丝绳直径/长度 Rope diameter/ length
	0-145 m/min, 单绳, 第四层 m/min, single line, 4th layer	65.7kN	20 mm/280 m
	0-90 m/min, 单绳, 第四层 m/min, single line, 4th layer	65.7 kN	20 mm/200 m
	0-2.0 r/min		
	从-1°抬起至81°约55s Approx. 55s for boom elevation from -1° to 81°		
	从12.66m伸出至68m约580s Approx. 580s for boom extension from 12.66m to 68m		

重量 Weight

双前桥转向 Two-wheel steering



Axle	1	2	3	4	总重量 Total weight
t	12	12	13	13	50

1)上车不带起重吊钩、副臂、臂端单滑轮，带2t平衡重；下车不带备胎及备胎支架；转向驱动形式：8×4×4；轮胎规格：1、2轴：385/95 R25，3、4轴：12.00R24；

Hook block, jib, single top are excluded from superstructure, 2 ton countweight are included in superstructure. Spare tire and spare tire bracket are excluded from chassis. Steer&Driving type: 8×4×4; Tire specification: 1st and 2nd axles : 385/95 R25, 3rd and 4th axles:12.00R24.



吊钩 Hook	倍率 No. of lines	吊钩重量 Weight kg	吊钩尺寸 Dimensions mm	备注 Remarks
85t	13	700	1735×554×520	单钩 Single hook, 标配 Standard
55t	8	470	1600×520×370	单钩 Single hook, 标配 Standard
7t	1	210	717×370×370	单钩 Single hook, 标配 Standard

作业速度 Working speeds



385/95 R 25
12.00 R24



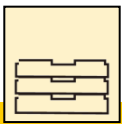
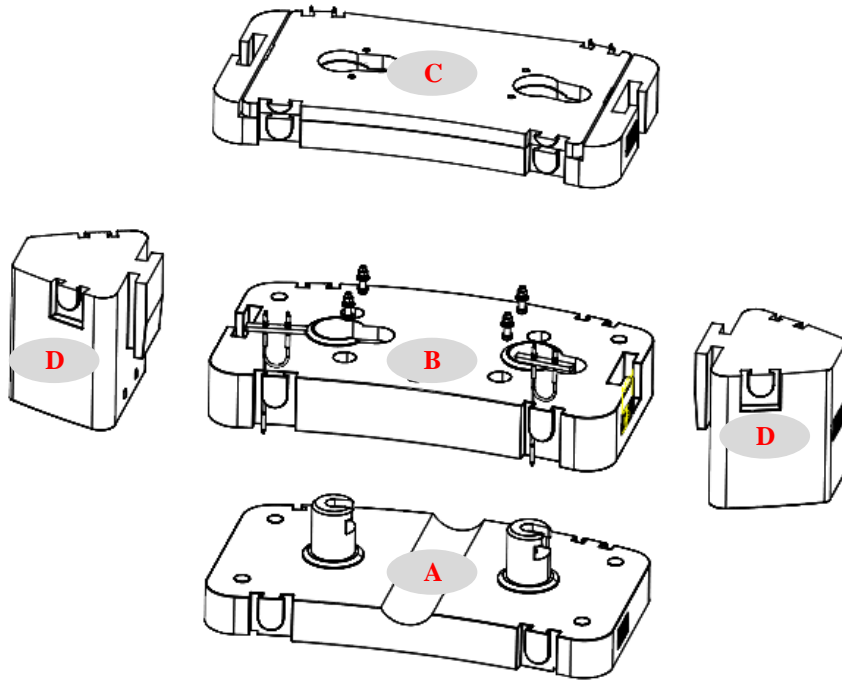
1 ~ 80



45%

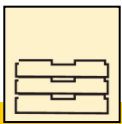
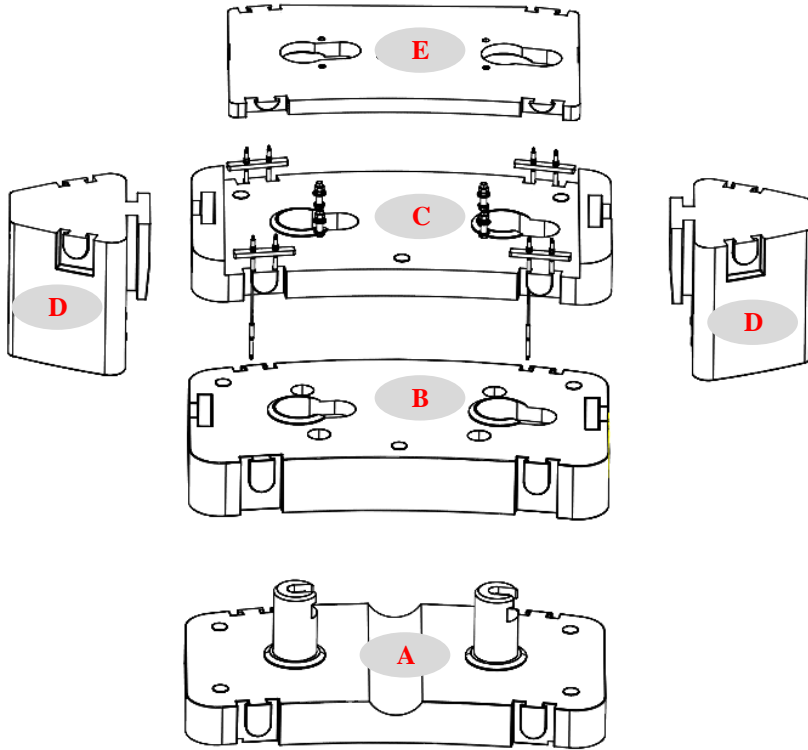


作业机构 Drive	作业速度 Working speed	最大单绳拉力 Max. single line pull	钢丝绳直径/长度 Rope diameter/ length
	0-145 m/min, 单绳, 第四层 m/min, single line, 4th layer	65.7kN	20 mm/280 m
	0-90 m/min, 单绳, 第四层 m/min, single line, 4th layer	65.7 kN	20 mm/200 m
	0-2.0 r/min		
	从-1°抬起至81°约55s Approx. 55s for boom elevation from -1° to 81°		
	从12.66m伸出至68m约580s Approx. 580s for boom extension from 12.66m to 68m		



平衡重 Counterweight	A	B	C	D
尺寸 (长×宽×高) mm Size (L×W×H) mm	2750×1536×795	2750×1536×424	2750×1536×294	917×1010×975
重量 t Weight t	8	9.6	7	4.2

工况模式 Working mode	33t	24.6t	15t	8t
组合形式 Combinations	A+B+C+2D	A+B+C	A+C	A

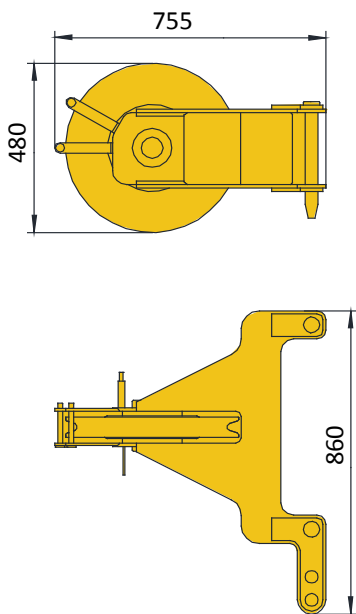


平衡重 Counterweight	A	B	C	D	E
尺寸 (长×宽×高) mm Size (L×W×H) mm	2750×1536×795	2750×1536×424	2750×1536×294	917×1010×975	2330×1428×102
重量 t Weight t	8	9.6	5	4.2	2

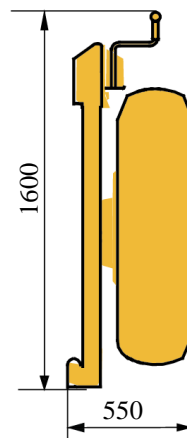
工况模式 Working mode	33t	24.6t	15t	10t	2t
组合形式 Combinations	A+B+C+2D+E	A+B+C+E	A+C+E	A+E	E

运输部件尺寸 Transportation components dimension

臂端单滑轮95kg
Single top 95kg



备胎 (含支架) 300kg
Spare wheel (bracket included) 300kg



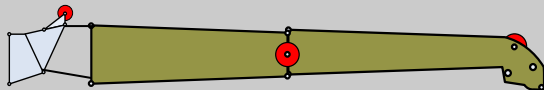
臂架组合方案

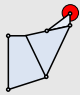


Boom / Jib combinations

副臂 - 10.5m
Jib - 10.5m



副臂 - 17.5m
Jib - 17.5m



部件 Component	结构形式 Structure	尺寸 (长×宽×高) mm Size (L×W×H) mm	重量 kg Weight kg
连接架 Connection bracket		2035×870×1476	215
一节副臂总成 First jib section assembly		9340×620×900	567
二节副臂总成 Second jib section assembly		6520×300×430	259

臂架组合方案

Boom / Jib combinations



主臂
Telescopic boom

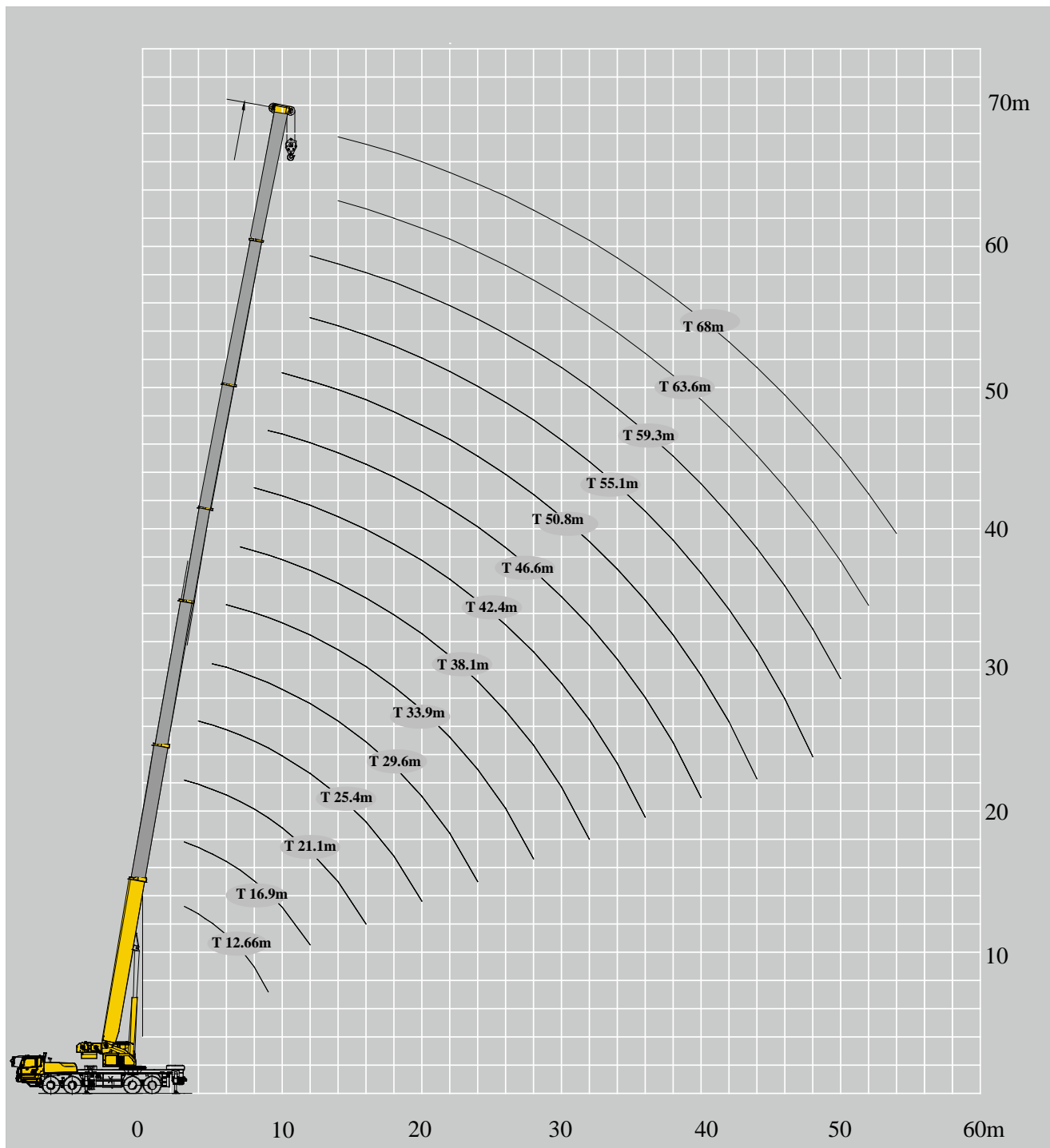
T : 12.66~68m

副臂
Jib

T : 55.1~63.6m
J : 10.5~17.5m

主臂加长节
Telescopic boom extension

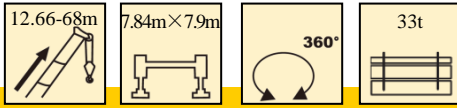
T : 55.1~63.6m
I : 7m
J : 10.5~17.5m



起重性能表

Lifting capacities

T 12.66~68m

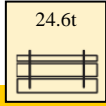
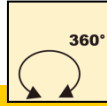
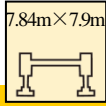


	12.66m	16.9m	21.1m	25.4m	29.6m	33.9m	38.1m	42.4m	46.6m	50.8m	55.1m	59.3m	63.6m	68m	
3	85.0	72.0	67.0												3
3.5	80.0	70.0	66.0												3.5
4	76.0	66.0	64.0	58.0											4
4.5	72.0	63.0	60.0	55.0											4.5
5	65.0	60.0	55.0	55.0	50.0										5
6	58.0	55.0	51.0	49.0	46.0	43.0									6
7	47.0	47.0	47.0	45.0	42.0	40.0	40.0								7
8	42.0	42.0	42.0	42.0	39.0	37.0	37.0	32.5							8
9	37.0	38.0	38.0	37.0	37.0	35.0	35.0	30.0	26.5						9
10		34.5	34.5	34.5	33.0	33.0	33.0	28.0	25.0	21.5					10
12		29.0	29.0	29.0	29.0	29.0	29.0	25.0	23.8	20.9	16.5	13.4			12
14			24.8	24.8	24.8	24.8	24.0	23.8	21.3	18.9	16.1	13.4	10.5	7.6	14
16			21.6	21.6	21.6	21.6	21.0	20.6	19.1	16.7	14.6	13.4	10.5	7.6	16
18				18.6	18.5	18.1	18.0	17.3	16.8	14.8	13.0	12.1	10.4	7.6	18
20				15.8	15.7	15.4	15.8	14.5	14.7	13.2	11.7	11.0	9.8	7.6	20
22					13.5	14.0	13.6	12.5	12.9	11.9	10.5	9.8	9.1	7.6	22
24					12.1	12.2	11.8	11.3	11.6	10.4	9.5	8.9	8.2	7.5	24
26						10.8	10.5	10.6	10.2	9.5	8.7	8.0	7.5	6.8	26
28							9.5	9.3	9.5	9.0	8.8	7.8	7.3	6.8	28
30								8.5	8.5	8.0	8.1	7.2	7.0	6.3	30
32								7.9	7.6	7.1	7.1	6.7	6.2	5.9	32
34									6.8	6.7	6.2	6.2	5.7	5.4	34
36									6.1	6.2	5.7	5.7	5.3	5.0	36
38										5.6	5.1	5.1	4.9	4.5	38
40										5.0	4.6	4.5	4.3	3.9	40
42											4.2	4.0	3.8	3.4	42
44											3.9	3.5	3.4	3.0	44
46												3.2	3.0	2.6	46
48													2.8	2.6	48
50														2.3	50
52															52
54															54

起重性能表

T 12.66~68m

Lifting capacities

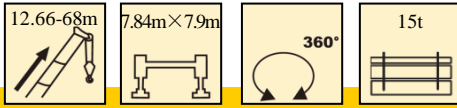


	12.66m	16.9m	21.1m	25.4m	29.6m	33.9m	38.1m	42.4m	46.6m	50.8m	55.1m	59.3m	63.6m	68m	
3	85.0	72.0	67.0												3
3.5	80.0	70.0	66.0												3.5
4	76.0	66.0	64.0	58.0											4
4.5	72.0	63.0	60.0	55.0											4.5
5	65.0	60.0	55.0	55.0	50.0										5
6	58.0	55.0	51.0	49.0	46.0	43.0									6
7	47.0	47.0	47.0	45.0	42.0	40.0	40.0								7
8	42.0	42.0	42.0	42.0	40.0	37.0	37.0	32.5							8
9	37.0	38.0	37.0	37.0	37.0	34.0	35.0	30.0	26.5						9
10		32.0	32.0	32.0	32.0	32.0	31.0	28.0	25.0	21.5					10
12		26.6	26.6	26.6	26.6	26.6	26.0	25.0	23.8	20.9	16.5	13.4			12
14			21.9	22.0	21.9	21.5	21.6	20.7	21.3	18.9	16.1	13.4	10.5	7.6	14
16			17.6	17.8	17.7	18.4	17.9	16.5	16.5	16.7	14.6	13.4	10.5	7.6	16
18				14.7	15.0	15.1	14.8	14.4	14.4	13.5	13.0	12.1	10.4	7.6	18
20				12.4	13.0	12.8	12.4	13.2	12.2	11.7	11.7	11.0	9.8	7.6	20
22					11.2	11.0	11.4	10.9	10.5	10.8	10.1	9.8	9.1	7.6	22
24					9.7	9.5	9.8	9.4	9.7	8.6	9.3	8.7	8.2	7.5	24
26						8.6	8.6	8.3	8.3	7.6	7.4	7.8	7.5	6.8	26
28						7.7	7.6	7.2	7.3	7.0	6.4	6.2	5.9	6.1	28
30							6.7	6.7	6.4	6.5	5.6	5.4	5.1	5.7	30
32							6.0	6.2	5.7	5.3	5.0	4.8	4.4	4.4	32
34								5.3	5.0	4.7	4.3	4.1	3.8	3.9	34
36								4.8	4.5	4.1	3.8	3.6	3.3	3.3	36
38									4.0	3.7	3.3	3.2	2.8	2.8	38
40									3.5	3.2	2.9	2.7	2.4	2.4	40
42										2.9	2.5	2.3	2.0	2.1	42
44										2.5	2.2	2.0	1.7	1.7	44
46											1.9	1.7	1.4	1.4	46
48											1.6	1.4	1.1	1.1	48

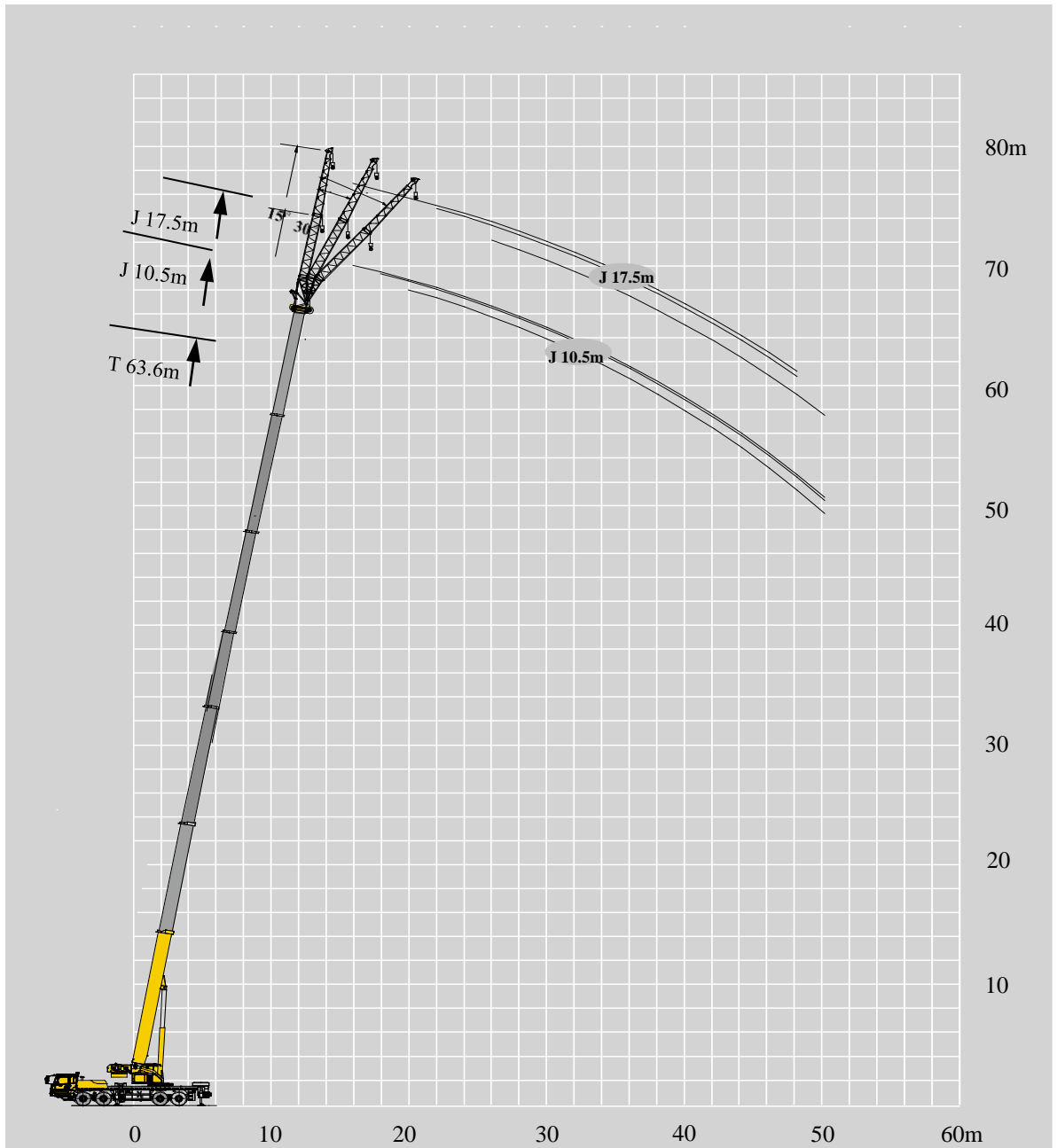
起重性能表

Lifting capacities

T 12.66~68m



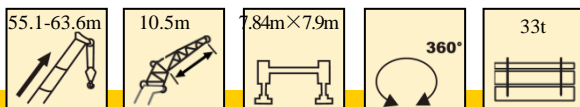
	12.66m	16.9m	21.1m	25.4m	29.6m	33.9m	38.1m	42.4m	46.6m	50.8m	55.1m	59.3m	63.6m	68m	
3	85.0	72.0	67.0												3
3.5	80.0	70.0	66.0												3.5
4	76.0	66.0	64.0	58.0											4
4.5	72.0	63.0	60.0	55.0											4.5
5	65.0	60.0	55.0	55.0	50.0										5
6	58.0	55.0	51.0	49.0	46.0	43.0									6
7	47.0	47.0	47.0	45.0	42.0	40.0	40.0								7
8	42.0	42.0	42.0	42.0	39.0	37.0	37.0	32.5							8
9	35.0	34.7	34.0	34.0	34.0	34.0	32.0	30.0	26.5						9
10		26.7	29.0	29.2	29.1	28.6	30.0	25.0	25.0	21.5					10
12		19.3	21.2	21.3	21.2	22.5	23.8	20.0	23.8	20.5	16.5	13.4			12
14			16.8	16.8	17.0	16.9	16.6	17.3	17.0	15.5	16.1	13.4	10.5	7.6	14
16			13.1	13.7	13.8	13.6	13.8	13.5	13.5	13.7	13.8	13.4	10.5	7.6	16
18				11.3	11.3	11.5	11.3	11.2	11.1	11.0	10.6	10.4	10.4	7.6	18
20				9.5	9.5	9.8	9.6	9.5	9.3	9.2	8.8	8.6	9.1	7.6	20
22					8.0	8.3	8.1	8.5	7.8	7.7	7.3	7.1	6.8	6.8	22
24					6.8	7.1	6.9	6.9	6.7	6.6	6.1	5.9	5.6	5.6	24
26						6.1	5.9	5.9	5.7	5.6	5.1	5.0	4.6	4.7	26
28							5.3	5.1	5.1	4.9	4.8	4.4	4.2	3.9	28
30								4.4	4.5	4.1	4.1	3.7	3.5	3.2	30
32								3.9	3.9	3.6	3.5	3.2	3.0	2.6	32
34									3.4	3.1	3.0	2.6	2.4	2.1	34
36										3.0	2.6	2.5	2.2	2.0	36
38											2.3	2.2	1.8	1.6	38
40												1.9	1.8	1.4	40
42													1.5	1.2	42



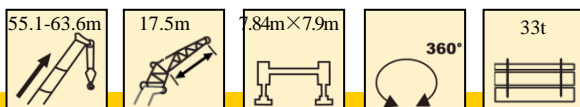
起重性能表

Lifting capacities

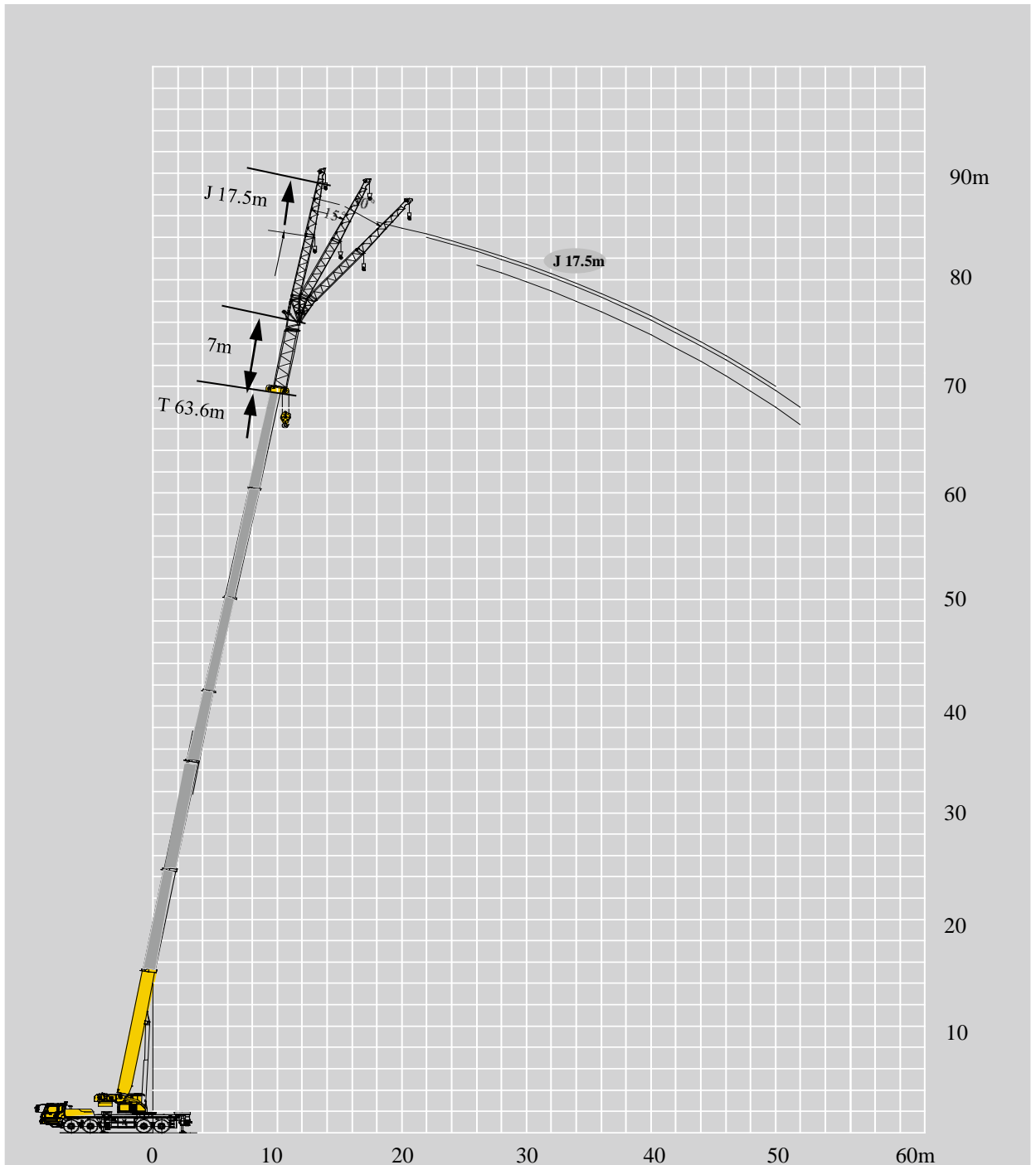
J 10.5m/17.5 m



	55.1m			59.3 m			63.6m			
	0°	15°	30°	0°	15°	30°	0°	15°	30°	
14	6.5									14
16	6.5	6.2		6.5			5.2			16
18	6.5	6.1	4.8	6.4	5.9		5.2	5.2		18
20	6.5	5.9	4.7	6.1	5.7	4.5	5.2	5.2	4.3	20
22	6.4	5.8	4.5	6.0	5.6	4.5	5.2	5.2	4.3	22
24	6.2	5.6	4.5	5.9	5.3	4.5	5.2	5.1	4.2	24
26	6.0	5.4	4.4	5.4	5.2	4.3	4.9	4.9	4.1	26
28	5.3	5.3	4.3	4.9	4.9	4.2	4.5	4.5	4.1	28
30	4.8	4.9	4.3	4.4	4.4	4.1	4.1	4.1	4.0	30
32	4.4	4.4	4.3	3.9	3.9	3.9	3.6	3.6	3.6	32
34	3.9	4.0	4.0	3.4	3.5	3.5	3.2	3.3	3.3	34
36	3.5	3.5	3.5	3.1	3.1	3.2	3.0	2.9	3.0	36
38	3.0	3.2	3.2	2.8	2.8	2.9	2.6	2.7	2.8	38
40	2.9	2.9	2.9	2.5	2.5	2.7	2.4	2.4	2.4	40
42	2.4	2.6	2.6	2.2	2.2	2.3	2.1	2.2	2.2	42
44	2.2	2.3	2.3	1.9	2.1	2.1	1.9	1.8	1.9	44
46	1.9	1.9	2.0	1.8	1.8	1.9	1.6	1.7	1.6	46
48	1.8	1.8	1.8	1.5	1.6	1.6	1.5	1.5	1.5	48
50	1.6	1.6	1.7	1.3	1.4	1.4	1.3	1.3	1.3	50
52	1.3	1.4	1.4		1.1	1.2				52
54	1.1	1.1	1.2							54
组合	222211			222221			222222			组合



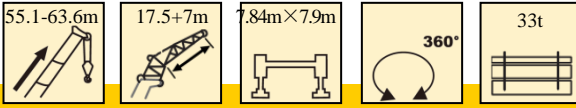
	55.1m			59.3 m			63.6m			
	0°	15°	30°	0°	15°	30°	0°	15°	30°	
14										14
16	4.4			4.0						16
18	4.2			3.8			3.8			18
20	4.1	3.1		3.7	3.1		3.7			20
22	4.0	3.0	2.3	3.6	2.9		3.5	2.9		22
24	3.9	2.8	2.3	3.5	2.8	2.2	3.4	2.7		24
26	3.7	2.9	2.3	3.5	2.8	2.2	3.3	2.7	2.1	26
28	3.6	2.9	2.1	3.4	2.8	2.2	3.1	2.7	2.1	28
30	3.5	2.7	2.1	3.2	2.7	2.1	3.1	2.7	2.1	30
32	3.3	2.6	2.1	3.1	2.6	2.1	3.0	2.5	2.1	32
34	3.2	2.6	2.0	3.1	2.4	2.1	2.9	2.4	2.0	34
36	3.0	2.6	2.0	3.1	2.5	2.0	2.9	2.4	1.9	36
38	3.0	2.5	2.0	2.7	2.5	2.1	2.5	2.3	2.0	38
40	2.8	2.4	2.0	2.5	2.3	2.0	2.3	2.3	1.9	40
42	2.5	2.5	1.9	2.2	2.3	1.9	2.1	2.2	2.0	42
44	2.3	2.3	1.9	2.0	2.1	2.0	1.9	2.0	1.9	44
46	2.0	2.1	1.9	1.7	1.8	1.8	1.6	1.7	1.7	46
48	1.7	2.0	1.8	1.6	1.7	1.6	1.4	1.5	1.6	48
50	1.5	1.7	1.7	1.4	1.5	1.5			1.4	50
52	1.4	1.5	1.6		1.4	1.3				52
54	1.2	1.3	1.4							54
组合	222211			222221			222222			组合



起重性能表

Lifting capacities

J 7+17.5 m



	55.1m			59.3 m			63.6m			
	0°	15°	30°	0°	15°	30°	0°	15°	30°	
14										14
16	3.2									16
18	3.2			3.0			2.5			18
20	3.2	3.0		3.0			2.5			20
22	3.2	2.8		3.0	2.9		2.5	2.5		22
24	3.2	2.8	1.8	3.0	2.8		2.5	2.5		24
26	3.2	2.8	1.8	2.9	2.6	1.8	2.5	2.5	1.7	26
28	3.2	2.7	1.6	2.9	2.6	1.7	2.5	2.5	1.7	28
30	3.2	2.5	1.6	2.9	2.5	1.7	2.5	2.5	1.7	30
32	3.2	2.4	1.6	2.9	2.4	1.7	2.3	2.3	1.6	32
34	3.2	2.2	1.5	2.9	2.2	1.6	2.3	2.3	1.5	34
36	3.2	2.1	1.5	2.7	2.2	1.5	2.3	2.3	1.5	36
38	2.9	2.0	1.5	2.5	2.2	1.5	2.2	2.1	1.5	38
40	2.5	2.0	1.4	2.2	2.1	1.4	2.0	2.0	1.5	40
42	2.3	2.0	1.4	2.0	1.9	1.4	1.8	1.8	1.4	42
44	2.0	1.8	1.4	1.7	1.8	1.4	1.7	1.6	1.4	44
46	1.8	1.7	1.4	1.6	1.6	1.3	1.3	1.4	1.4	46
48	1.7	1.7	1.4	1.3	1.5	1.3	1.1	1.2	1.2	48
50	1.5	1.5	1.2	1.0	1.2	1.3		1.0	1.1	50
52	1.1	1.3	1.3							52
54		1.1	1.2							54
组合	222211			222221			222222			组合

符号标识

Description of symbols

	上车 Superstructure		底盘 Chassis
	起重能力 lifting capacity		车桥 Axle
	吊臂长度 Boom length		行驶速度 Driving speed
	工作幅度 Radius		爬坡能力 Gradability
	吊臂仰角 Boom position		轮胎 Tyres
	主臂起升高度 Hoist height with Boom		支腿 Outriggers
	固定副臂长度 Fixed jib length		吊钩 Hook block
	副臂安装角 Jib offset angle		平衡重 Counterweight
	副臂起升高度 Hoist height with jib		卷扬 Winch
	独立臂头 Independent jib head		360°全回转 360° rotation
	主臂加长节 Boom extension		

主要技术参数

Main Technical Data

类别 Category	项目 Item	单位 Unit	参数 Parameter		
			全桥转向 All-wheel steering	前桥转向 Two-wheel steering	
尺寸参数 Dimensions	外形尺寸(长×宽×高) Outline size (length× width× height)	mm	14960×2750×3990		
	轴距 Wheel base	mm	2000+4000+1500	2000+4000+1350	
	轮距(前/后) Track (Front/ Rear)	mm	2353/2325(美驰) 2291(大江)	2353/2063	
	前悬/后悬 Front/ Rear overhang	mm	2535/2270	2535/2420	
	前伸/后伸 Front/ Rear extension	mm	2260/385	2260/385	
重量参数 Weight	最大允许总质量 Total vehicle mass in travel configuration	kg	48000	50000	
	轴荷 Axle load	一轴 1st axle	kg	12000	12000
		二轴 2nd axle	kg	12000	12000
		三轴 3rd axle	kg	12000	13000
四轴 4th axle		kg	12000	13000	
动力参数 Power	发动机型号 Engine model	—	MC11.40-50(国五)/MC11.40-60(国六)		
	额定功率/转速 Engine rated power/rpm	kW/(r/min)	297/1900		
	最大净功率/转速 Max. net power/rpm	kW/(r/min)	294/1900		
	最大输出扭矩/转速 Engine rated torque/rpm	N.m/(r/min)	1900/1000-1400 (国五) 1907/1000-1400 (国六)		
行驶参数 Travel	最高车速 Max. travel speed	km/h	≥80		
	最低稳定车速 Min. travel speed	km/h	1.7 ~ 3		
	最小转弯直径 Min. turning diameter	m	≤20	≤24	
	臂头最小转弯直径 Min. turning diameter at boom tip	m	≤25	≤29.4	
	最小离地间隙 Min. ground clearance	mm	367	303	
	接近角 Approach angle	°	20		
	离去角 Departure angle	°	14	13	
	制动距离(制动初速度为30km/h) Braking distance (at 30 km/h)	m	≤10		
	最大爬坡能力 Max. grade ability	%	45		
	百公里油耗 Fuel consumption per 100 km	L	45		
噪音 Noise	加速行驶机外噪声 Exterior noise level	dB(A)	≤84		
	驾驶员耳旁噪声 Noise level at seated position	dB(A)	≤90		

主要技术参数

Main Technical Data

类别 Category	项目 Item		单位 Unit	参数 Parameter	
主要性能参数 Main performance	最大额定总起重量 Max. total rated lifting capacity		t	85	
	最小额定工作幅度 Min. rated working radius		m	3.0	
	转台尾部回转半径 Turning radius at turntable tail	平衡重处 Counterweight	mm	4560	
		副卷处 Auxiliary winch	mm	4510	
	最大起重力矩 Max. load moment	基本臂 Base boom	kN.m	3480	
		最长主臂 Fully-extended boom	kN.m	1800	
		最长主臂+副臂 Fully-extended boom + Jib	kN.m	1274	
	支腿跨距 Outrigger span	纵向 Longitudinal	m	7.84 (7.2)	
		横向 Lateral	m	7.90 (5.9)	
	起升高度 Hoist height	基本臂 Base boom	m	13.2	
		最长主臂 Fully-extended boom	m	68	
		最长主臂+副臂 Fully-extended boom + Jib	m	87	
	起重臂长度 Boom length	基本臂 Base boom	m	12.66	
		最长主臂 Fully-extended boom	m	68	
		最长主臂+副臂 Fully-extended boom + Jib	m	88.1	
	副臂安装角 Jib offset angle		°	0、15、30	
工作速度参数 Working speed	起重臂起臂时间 Boom raising time		s	55	
	起重臂全伸时间 Boom fully extended time		s	580	
	最大回转速度 Max. slewing speed		r/min	2.0	
	支腿收放时间 Outrigger extending and retracting time	水平支腿 Outrigger beam	收 Retracting	s	40
			放 Extending	s	50
		垂直支腿 Outrigger jack	收 Retracting	s	45
			放 Extending	s	50
起升速度 (单绳, 第四层, 空载) Hoisting speed (single line, 4th layer, no load)	主起升机构 Main winch		m/min	145	
	副起升机构 Auxiliary winch		m/min	90	
噪声 Noise	机外辐射 Exterior noise level		dB (A)	124	
	司机位置处 Noise level at seated position		dB (A)	90	

注意事项 Notes

1. 表中额定总起重量值，是在平整的坚固地面上本起重机能够保证的最大总起重量，包括吊钩和吊具的重量，所以为了估算重物重量，必须减去上述的装置重量。
2. 表中的工作幅度为起吊重物离地时起重物到起重機回轉軸線的水平距離，是包括起重臂變形量在內的實際值，因而起吊前應考慮起重臂變形量。
3. 只允許在5級(瞬時風速14.1m/s，風壓125N/m²)風以下進行作業。
4. 吊重前操作者必須對物體的重量和工作範圍了解後選擇合適的作業工況，嚴禁超出表中的數值。幅度及臂長在相鄰兩個數值之間時，應依據兩個數值中較小值確定起重作業。
5. 應按主臂仰角範圍作業，即使是空載，也不應使主臂仰角處於範圍外，謹防整機傾翻。
6. 表中的主臂長度應要按照每節臂的伸縮要求進行伸出。

1. The total rated loads given in the rated load charts are the maximum lifting capacity when the crane is set up on firm and level ground, which includes the weight of the hook block and slings. The weight of above-mentioned devices should be deducted from the rated lifting load.
2. The working radius shown in the rated load charts is the radius when the load is lifted off the ground, and it is the actual value including loaded boom deflection. Take boom deflection into consideration before beginning a lifting operation.
3. A lifting operation is permissible only when the wind force is below grade 5 (instantaneous wind speed is 14.1 m/s, wind pressure is 125 N/m²).
4. Before beginning lifting operation, the operator should know the weight of the load to be lifted and its working range, and then select proper working conditions. Never operate the crane beyond the limit shown in the chart. Use the lower value from the chart when the boom length or working radius is between the range of values.
5. Observe the boom angle limit. Never operate the crane with the boom angle beyond the recommended limit even if a load is not being carried. Otherwise, the crane will tip.
6. The boom should be extended according to the telescoping code shown by digits, which means the percentage of boom sections extended.



地址：江苏省徐州市经济技术开发区高新路68号

Add : No. 68, Gaoxin Road, Economic Development Zone, Xuzhou, Jiangsu Province, China

电话(Tel) : +86-516-83462242/83462350

质量监督电话(Quality Inquiry Tel) : +86-516-87888268

备件电话(Spare Parts Tel) : +86-516-83461542

邮编(Post Code) : 221004

网址(Web) : www.xcmg.com/qizhongji

服务热线 Service Tel

400-110-9999

400-001-5678



本印刷品不属于合同。出于产品不断改进的需要，我们保留对产品型号、参数、配置进行变更的权利，恕不另行通知。图片仅供参考，具体产品以实物为准。图片中产品可能并非标准配置，部分部件可能需要另行购置。办理牌照和上路行驶需遵守当地法规。

This print does not belong to the contract. We reserve the right to modify the design (such as product model, parameters and configuration) without notice for improvement. The pictures are just for reference. The product in the picture may not be standard configuration. Some parts need to be purchased separately. Conform to the local laws for license application and road traveling.