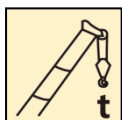


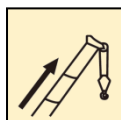
XCT100H 汽车起重机 / Truck Crane

技术规格书

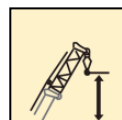
Basic technical specification



100 t



58m



82 m

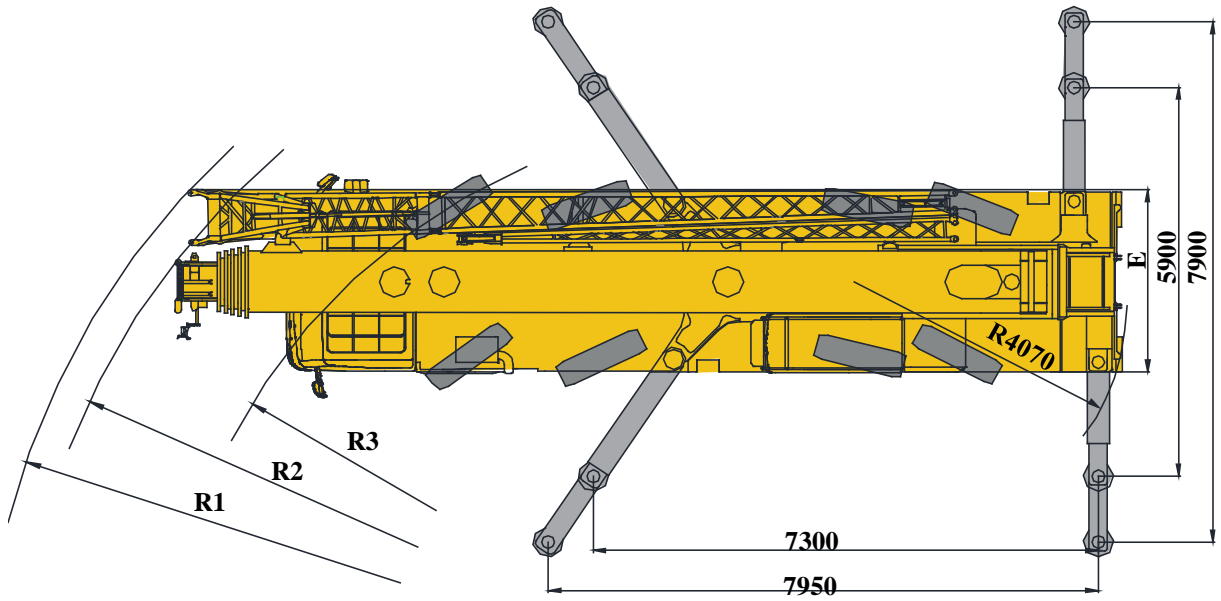
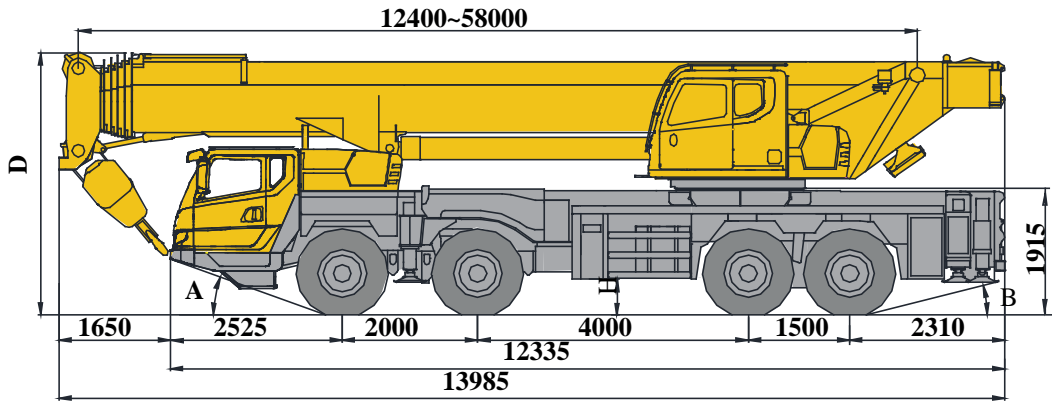


目录

Content

目录	
Content	
尺寸参数 Dimensions	3
技术规格 Product Specifications	4-8
重量/作业速度 Weight / Working speeds	9
平衡重 Counterweight	10
运输部件尺寸 Transportation components dimension	11
臂架组合方案 Boom / Jib combinations	12-13
主臂 Boom	14-17
副臂 Jib	18-21
符号标识 Description of symbols	22
主要技术参数表 Transportation plan	23-24
注意事项 Notes	25

尺寸参数 Dimensions



	A	B	D	E	R1	R2	R3	H
385/95 R 25 (14.00 R 25)	21°	15°	3990	2780	12600	12000	10000	367

技术规格

Technical specifications



底盘

配置

车架 徐工设计、制造，全覆盖式走台板，防扭转箱型结构，高强度钢材制造。 ●

支腿 4支腿，前摆腿后水平支腿结构，水平伸缩和垂直伸缩由液压控制，底盘两侧装有电控操纵控制台，控制台板装有水平仪、照明灯和调速按钮，支腿油缸均设有单向阀，且垂直支腿带有双向液压锁。
支脚盘尺寸：φ450mm
最大起重量时支腿反力：820kN ●

发动机 MC11.40-50，直列六缸水冷电控柴油发动机，重汽曼，额定功率297kW/1900rpm，最大扭矩1900Nm/1000-1400rpm，国五排放标准。
燃油箱容积：300L。 ●

WP12.375E50，直列六缸水冷电控柴油发动机，潍柴制造，额定功率276kW/1900rpm，最大扭矩1800Nm/1000-1400rpm，国五排放标准。
燃油箱容积：300L。 ○

MC11.40-60，直列六缸水冷电控柴油发动机，重汽曼制造，额定功率297kW/1900rpm，最大扭矩1907Nm/1000-1400rpm，国六排放标准。燃油箱容积：300L。 ○

MC11.39-30，直列六缸水冷电控柴油发动机，中国重汽，额定功率290kW/1900rpm，最大扭矩1900Nm/1000-1400rpm，国三排放标准。
燃油箱容积：300L。 ○

变速箱 陕齿机械式变速箱，10个前进档，2个倒档，带同步器。 ●

车桥 名牌厂家高强度车桥，1,2桥转向，3,4桥转向驱动。 ●

悬挂 前悬架采用少片变截面悬架，后悬架采用双纵臂板簧平衡悬架。 ●

轮胎 8个轮胎，1个备胎，每桥均装单胎，双钱制造。
轮胎规格：385/95R25（14.00R25） ●

制动 行车制动：双回路气压制动，作用于所有车轮。
驻车制动：弹簧贮能制动，作用于3,4轴车轮。
辅助制动：发动机排气制动和缓速制动。 ●


转向 全桥转向，1、2桥机械转向+液压助力，3/4桥缸控随动转向，可适应多种工况的要求，实现多种转向模式。 ●

驾驶室 新型复合结构全宽驾驶室，全封闭、装备豪华舒适。性能上：优越的密封性和防腐蚀、防震设计；配置大视野的前挡风安全玻璃、后视镜，电控洗涤器，电子门窗升降器，带有除霜风挡的室内空气加热器，冷暖空调，收音机、丝网地垫等。主驾采用空气悬浮座椅副驾采用简易卧铺等。2公斤灭火器
标配冷暖空调。 ●

电气系统 直流24伏特，串联12伏特的电池组2个。
发电机，28伏特-80安培。 ●

技术规格

Technical specifications

	上车	配置
结构	徐工设计、制造，高强度钢材制造。	●
液压系统	电比例变量泵用于起升、变幅、伸缩；回转采用闭式泵驱动；比例电磁换向控制阀；风冷式液压油散热器；液压油箱有效容积：840L	●
操纵方式	先导电比例操纵，无级调速，由左右2个操纵手柄控制起重机的主要动作。	●
主起升机构	液压控制调速，由液压马达通过行星齿轮减速器驱动，内置常闭式制动器并带有平衡阀，装有绳槽卷筒。	●
副起升机构	液压控制调速，由液压马达通过行星齿轮减速器驱动，内置常闭式制动器并带有平衡阀，装有绳槽卷筒。	●
回转机构	单排四点接触球外齿式回转支承，由液压马达通过行星齿轮减速器驱动，内置常闭式制动器，可连续回转360°，具有动力控制或自由滑转的功能，可无级调速。	●
变幅机构	单变幅油缸，带有负载补偿功能的变幅平衡阀，变幅下落采用平衡阀外控式重力+动力下降方式。	●
操纵室	钢制操纵室，无视野死角的前景窗，安全玻璃，推拉式车门，可调式电加热功能座椅，可翻仰20°，装有前窗顶窗遮阳帘、顶窗双层遮阳帘，后窗遮阳帘；雨刮器、顶部防护栏、推拉踏板，配备力矩限制器、电控扶手箱、发动机动力加速踏板、发动机起动开关等。标配冷暖空调。2kg灭火器，出口配置6kg灭火器。	●
安全装置	液压平衡阀；液压溢流阀；液压双向锁；力矩限制器；三圈保护器；起升高度限位器；风速仪；卷扬监视装置	●
组合配重	总重29t，有6.5t、15.5t、21.6t、29t4种组合方式。	●

能量回收系统 起重作业时，将卷扬落、变幅落产生的势能进行回收并直接利用，上车综合平均节油率15%

车辆行驶时，利用液压回收系统，回收利用车辆的制动动能，提升车辆起步加速性能、爬坡能力、长坡制动性能。

起重钩	配置
90t钩	○
80t钩	●
50t钩	●
7t钩	●

	臂架系统	配置
主臂	6节，“U”形截面的筒形焊接结构，单板式臂头、紧凑型臂尾。单缸插销伸缩机构 主臂长度：12.4m~58m。	●
副臂	由连接架、旋转架和两节桁架结构折叠式副臂组成，具有0°、15°、30°三种安装角，收存于主臂旁。 副臂长度：10.8m、18.3m	●
臂端单滑轮	单滑轮，安装在主臂顶端，用于单股钢丝 绳起重作业，起重性能与主臂相同，但最大起重量不超过7t。	●
主臂加长节	桁架式焊接结构，与主臂臂头固定安装 主臂加长节长度：7m	●
独立臂头	桁架式焊接结构，与主臂臂头固定安装。 独立臂头长度：2.9m	●


产品各部件明细如上所述，具体部件明细请参照产品报价单

符号说明：

- —— 表示标准配置；
- —— 表示选装配置。


技术规格


Technical specifications

	Chassis	Configuration
Frame	Designed and manufactured by XCMG, with all covered walking surface, anti-torsion box structure and optimal load-bearing structure design, made of imported high strength steel.	●
Outrigger	4 outriggers, K-shaped arrangement, lateral and vertical outrigger controlled by the hydraulic control. Both sides of the chassis equipped with electronic control console, the console installed with luminous level, lighting and speed buttons; outrigger cylinders equipped with one-way valve, and the vertical outrigger has two-way hydraulic lock. Float dimension: φ450mm Reaction force of outrigger at max. lifting load:820KN	●
Engine	MC11.40-50, in-line six-cylinder water-cooled EFI diesel engine, manufactured by CHINA NATIONAL HEAVY DUTY TRUCK GROUP CO., LTD/WEICHAI POWER, rated power 297kW/1900rpm, max. torque 1900Nm/1000-1400rpm, the national V emission standards. Fuel tank capacity: 300L	●
	WP12.375E50, in-line six-cylinder water-cooled EFI diesel engine, manufactured by CHINA NATIONAL HEAVY DUTY TRUCK GROUP CO., LTD/WEICHAI POWER, rated power 276kW/1900rpm, max. torque 1800Nm/1000-1400rpm, the national V emission standards. Fuel tank capacity: 300L	○
	MC11.40-60, in-line six-cylinder water-cooled EFI diesel engine, manufactured by CHINA NATIONAL HEAVY DUTY TRUCK GROUP CO., LTD, rated power 297kW/1900rpm, max. torque 1907Nm/1000-1400rpm, the national VI emission standards. Fuel tank capacity: 300L	○
	MC11.39-30, in-line six-cylinder water-cooled EFI diesel engine, manufactured by CHINA NATIONAL HEAVY DUTY TRUCK GROUP CO., LTD, rated power 290kW/1900rpm max. torque 1900Nm/1000-1400rpm the national III emission standards. Fuel tank capacity: 300L	○
		<p>Gearbox Mechanical transmission 10JSD180TB, made by Shaanxi Fast Gear Co., Ltd., manual flexible shaft control, 10-forward speed and 2-reverse speed with a synchronizer. ●</p> <p>Axes Four-axle chassis, axles 1 and 2 are high strength load-bearing axles for steering, axles 3 and 4 are steering and driving, made by famous makers through adoption of foreign advanced technology ●</p> <p>Suspension Leaf spring balanced suspensions are adopted for front axle, and dual longitudinal arm leaf spring balanced suspensions are adopted for rear axle. ●</p> <p>Tires 8tires and 1 spare tire, each axle is equipped with single tire, manufactured by Double coin, large bearing capacity. Tire specifications:385/95R25 ●</p> <p>Brakes Service braking: foot pedal operated double-circuit air pressure brake. The first circuit acts on the wheels of axles 1 and 2; the second circuit acts on the wheels of axles 3 and 4. ● Parking brake: air-release brake, acting on the 3rd and 4th axles, it works through the spring-loaded air chamber on each axle. Auxiliary brake: engine exhaust brake and engine retarder brake.</p> <p>Steering All-wheel steering, axles 1 and 2 are mechanically steered + hydraulic power assistance, axles 3 and 4 are steered through cylinder control. ●</p> <p>Cab New full-dimension enclosed cab, luxury and comfort. It is designed to be leakproof, anti-corrosive and shockproof. It is equipped with a windshield offering outstanding visibility, rear mirrors, electric control washer, electronic lifters of doors and windows, indoor air humidifier with windscreen defroster, air conditioner, radio cassette player, new floor mat etc. ●</p> <p>Electric 24V DC, negative ground, 2 batteries. ●</p>

技术规格


Technical specifications

 Superstructure	Configuration
Frame Designed and manufactured by XCMG; Made of high-strength steel	●
Hydraulic system Electric proportional variable pump driven by an engine, used for lifting, elevating and telescoping operations. A closed pump is used to drive slewing operation. Proportional solenoid valve Air cooled hydraulic oil cooler Oil tank capacity:840L	●
Operating mode Pilot electric proportional control is used for controlling the superstructure. Also employed are PLC integrated intelligent control technology and CANBus control network. Besides of normal control function, real-time monitoring, fault diagnostic and fuzzy inquiry of working conditions are available.	●
Main winch system Hydraulic control is used for speed regulation. The system is driven by a hydraulic motor through a planetary gear reducer, with a normally closed brake, a balanced valve and a grooved drum equipped	○
Auxiliary winch system Hydraulic control is used for speed regulation. The system is driven by a hydraulic motor through a planetary gear reducer, with a normally closed brake, a balanced valve and a grooved drum equipped	●
Slewing system Single-row four-point ball contact external tooth slewing ring is driven by a hydraulic motor ,through a planetary gear reducer , with a normally closed, and may continuously slew 360° . Power control or free slewing function is available, and the slewing speed may be infinitely regulated.	●
Elevating system A single cylinder; A balance valve with load compensation function. The newly designed way, which combines external oil pressure-controlled free-fall with the rod chamber pressure-controlled balance valve.	●

 Superstructure	Configuration
Operator's Cab Steel cab. The cab has full-view front window, safety glass, sliding door, adjustable seat, with function of electric heating for the seat and it can be turned 20 degrees. It is equipped with sun shield for the front and rear window, double-layer sun shield for transom window, wipers, top fence, pull-out step, load moment limiter, accelerator pedal, activate switch, air conditioner, etc. The 2 kg fire extinguisher is used for domestic market and 6 kg fire extinguisher is used for exporting.	●
Safety devices Hydraulic balance valve; hydraulic relief valve; double-way hydraulic valve; load moment limiter; rope-end limiter; height limiter; anemometer; winch camera	●
Combined counterweight Total weight is 29 t. Counterweight configurations: 6.5 t, 15.5 t, 21.6 t and 29 t	●
Energy recovery system The pioneering energy recovery technology is adopted to recycle and reuse the potential energy from the movements of lowering hook and boom, resulting in 15% average oil-saving rate. With hydraulic recovery system, the energy generated by the braking system is constantly stored, in result, the acceleration performance after starting, grade ability and braking performance on long downhill are improved.	○
Hook block 90ton	○
80ton	●
50ton	●
7ton	●

技术规格

Technical specifications

	臂架系统	Configuration
Boom	6-section, U-shape cross section, welding structure. with single-plate boom head and compact boom tail. Single-cylinder pinning telescoping system Boom length:12.4m ~ 58m.	●
Jib	The jib consists of a connecting bracket, a rotating bracket and two lattice sections. Three offset angles of 0° , 15° and 30° are available. It is stowed along the side of the boom. Jib length:10.8m/18.3m	●
Single top	Fitted at boom head, used for single line operation. Its lifting performance is the same as that for boom, but the maximum lifting load does not exceed 7,000 kg.	●
Boom extension	Lattice welding structure, Fitted at boom head. Boom extension length:7m	●
Independent jib head	Lattice welding structure, Fitted at boom head. Independent jib head length:2.9m	●

Product parts list is as mentioned above.
Please refer to the product quotation for specific parts

● —Standard

○ —Optional

重量 Weight



车桥 Axle	1	2	3	4	总重量 Total weight
t	12	12	12	12	48



吊钩 Hook	倍率 No. of lines	吊钩重量 Weight kg	吊钩尺寸 Dimensions mm	备注 Remarks
90t	12	1010	857×610×1754	双钩 Double hook, 选配 Optional
80t	12	700	554×520×1735	单钩 Single hook, 标配 Standard
50t	6	515	730×329×1586	单钩 Single hook, 标配 Standard
7t	1	256	426×426×731	单钩 Single hook, 标配 Standard

作业速度 Working speeds



385/95 R 25
(14.00 R 25)



1 ~ 90

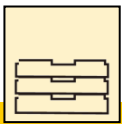
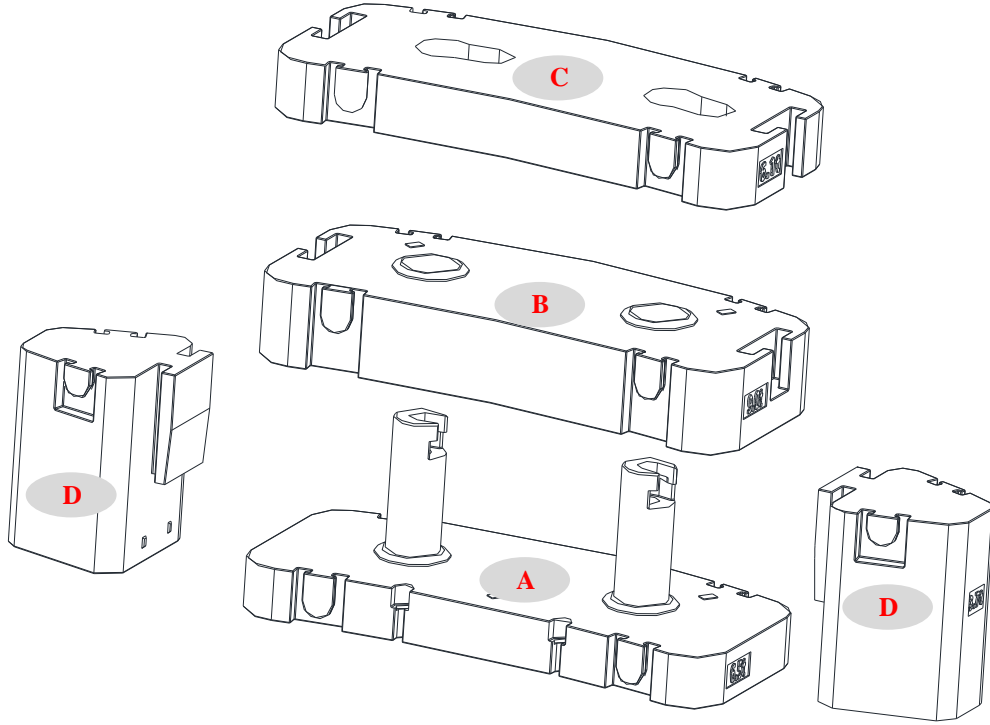


45%



作业机构 Drive	作业速度 Working speed	最大单绳拉力 Max. single line pull	钢丝绳直径/长度 Rope diameter/ length
	0-135 m/min, 单绳, 第四层 m/min, single line, 4th layer	82kN	20 mm/260 m
	0-105 m/min, 单绳, 第四层 m/min, single line, 4th layer	71.5 kN	20 mm/180 m
	0-1.8 r/min		
	从-0.5°抬起至81°约40s Approx. 40s for boom elevation from -0.5° to 81°		
	从12.4m伸出至58m约450s Approx. 450s for boom extension from 12.4m to 58m		

平衡重 Counterweight



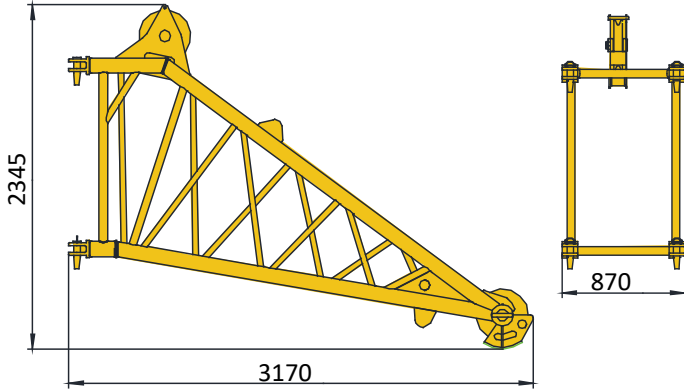
平衡重 Counterweight	A	B	C	D
尺寸 (长×宽×高) m Size (L×W×H) m	1275×2750×1035	1275×2750×484	1275×2750×322	889×870×1070
重量 t Weight t	6.5	9	6.1	3.7

工况模式 Working mode	29t	21.6t	15.5t	6.5t
组合形式 Combinations	A+B+C+2×D	A+B+C	A+B	A

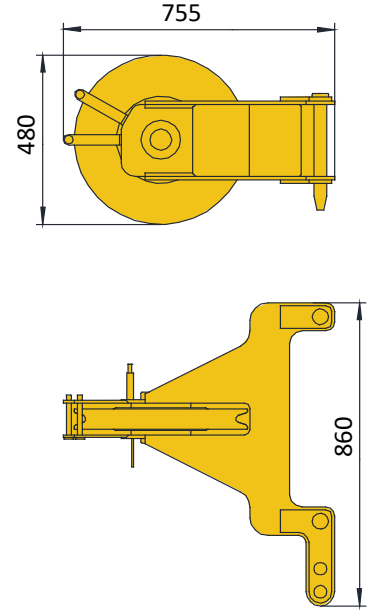
运输部件尺寸

Transportation components dimension

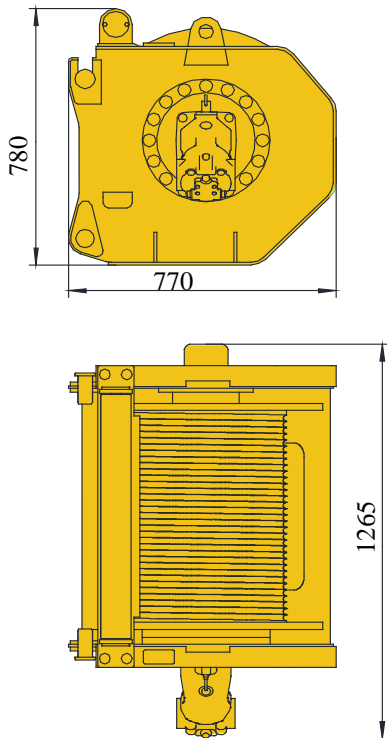
独立臂头 420kg
Independent jib head 420kg



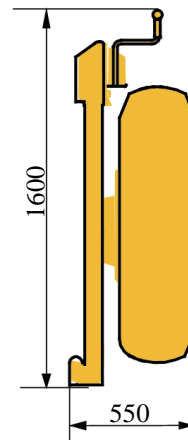
臂端单滑轮95kg
Single top 95kg



副起升机构 670kg
Auxiliary winch 670kg

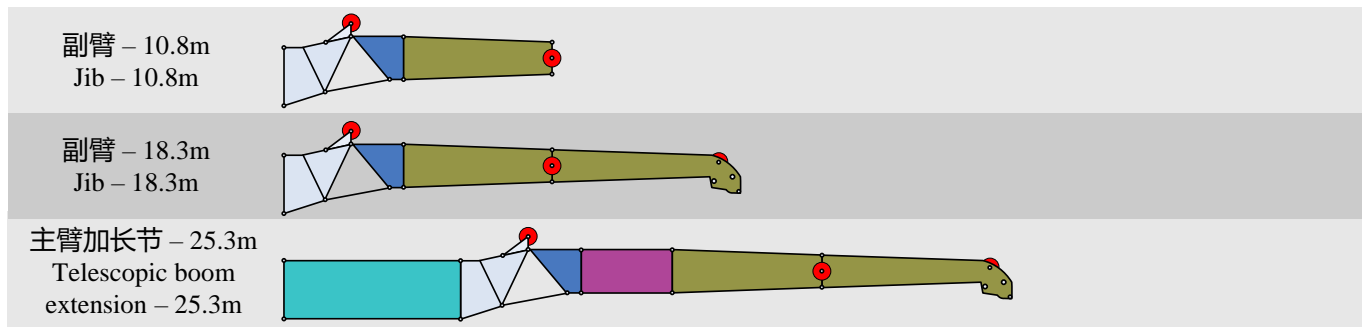


备胎 (含支架) 300kg
Spare wheel (bracket included) 300kg



臂架组合方案

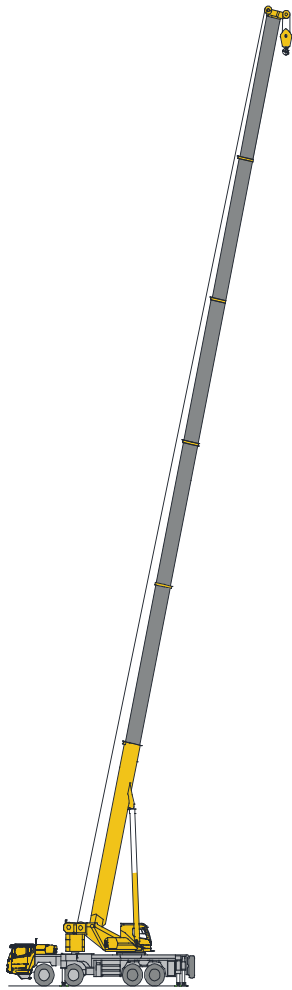
Boom / Jib combinations



部件 Component	结构形式 Structure	尺寸 (长×宽×高) mm Size (L×W×H) mm	重量 kg Weight kg
连接架 Connection bracket		2025×850×1820	230
旋转架 Swinging bracket		2055×695×1155	200
主臂加长节 Telescopic boom extension		7090×850×1360	450
一节副臂总成 First jib section assembly		7780×640×920	565
二节副臂总成 Second jib section assembly		7410×445×670	260

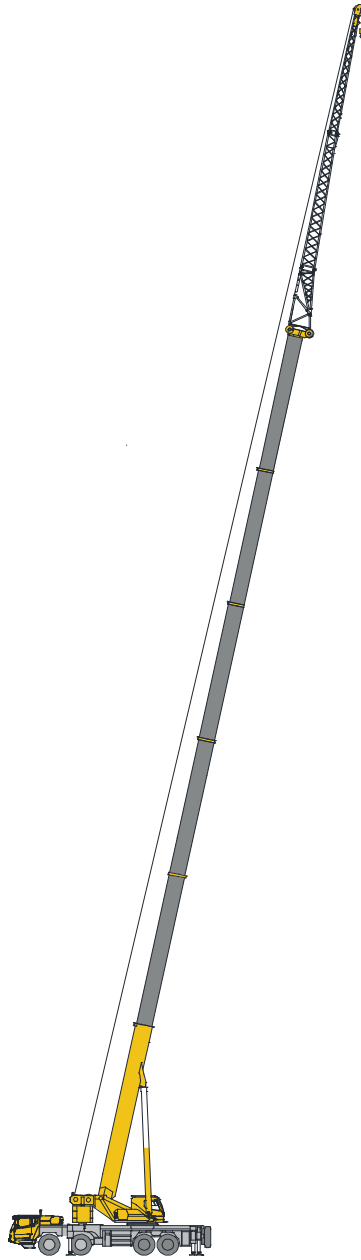
臂架组合方案

Boom / Jib combinations



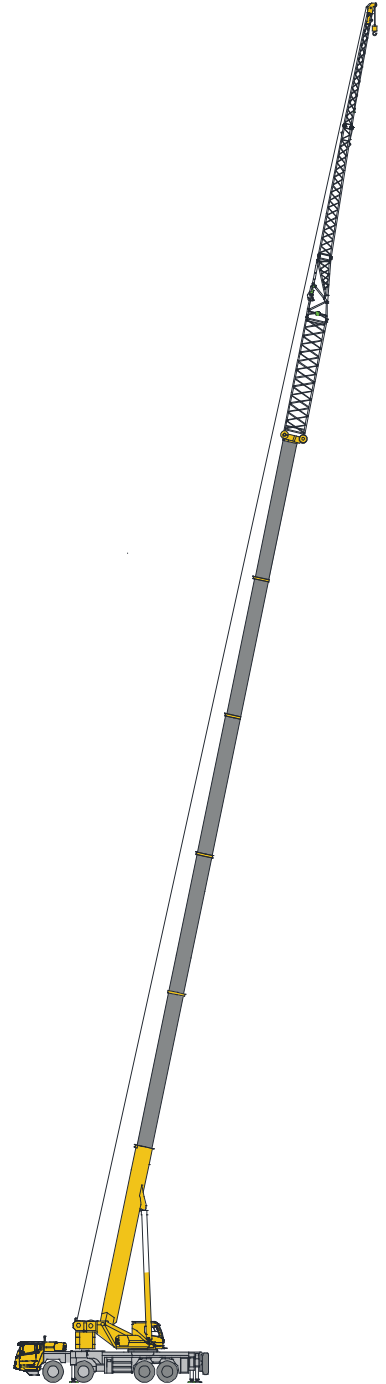
主臂
Telescopic boom

T: 12.4~58m



副臂
Jib

T: 54.4~58m
J: 10.8~18.3 m

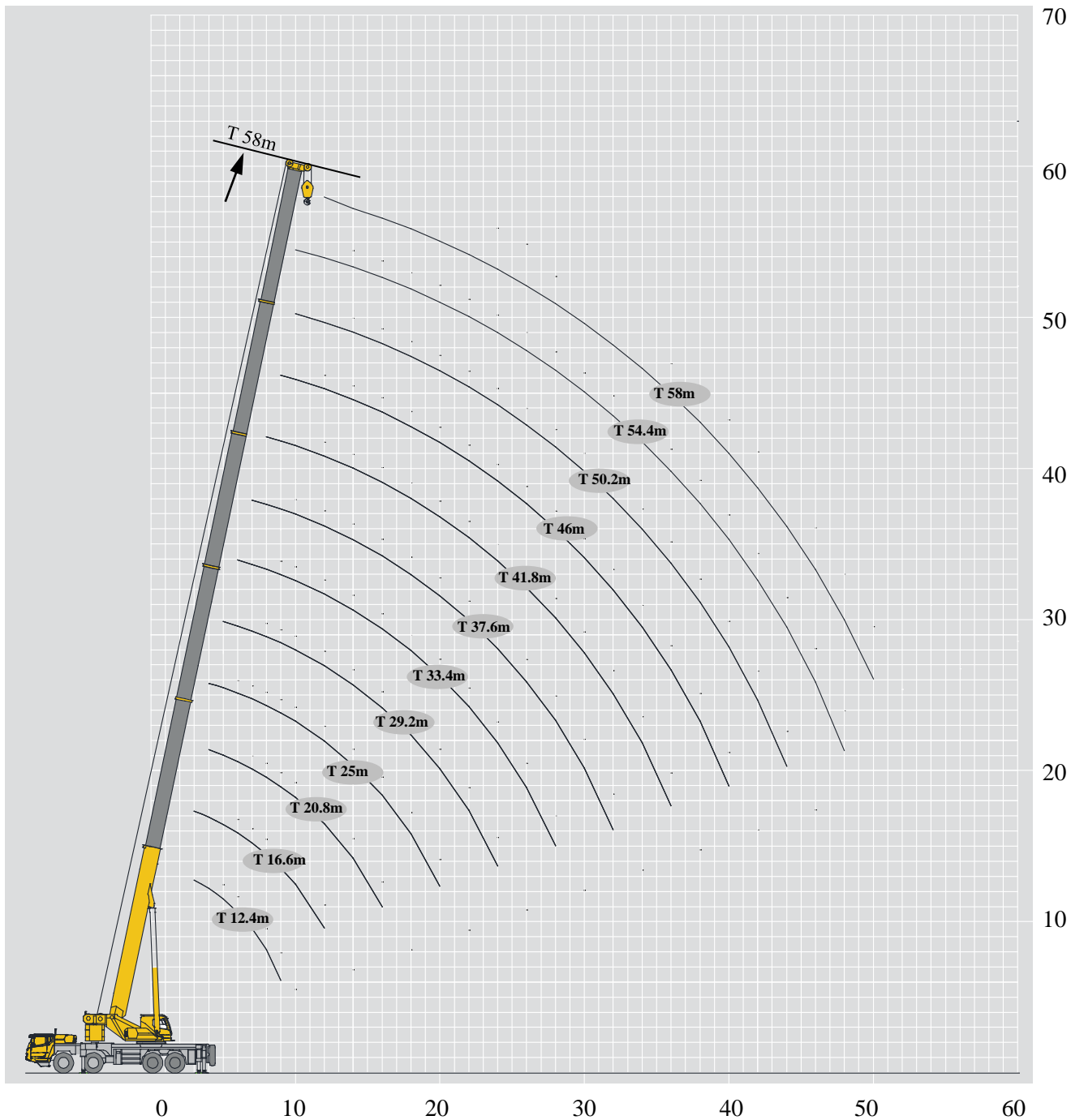


主臂加长节
Telescopic boom extension

T: 54.4~58m
I: 7m
J: 10.8~18.3m

起升高度曲线图 Lifting heights

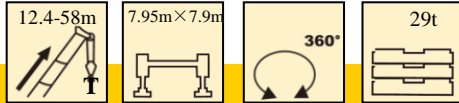
主臂
Boom



起重性能表

Lifting capacities

T 12.4~58m

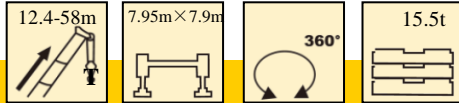


	12.4m	16.6m	20.8 m	25m	29.2m	33.4m	37.6m	41.8m	46m	50.2m	54.4m	58m	
3	100.0*	80.0											3
3.5	90.0	80.0											3.5
4	88.0	78.0	72.0	65.0									4
4.5	79.0	74.0	69.0	65.0									4.5
5	70.0	68.0	66.0	62.0	55.0								5
6	60.0	59.0	59.0	56.0	55.0	46.0							6
7	50.0	51.0	50.0	50.0	50.0	43.0	36.4						7
8	44.0	44.0	44.0	44.0	45.0	40.0	33.0	27.4					8
9	37.0	40.0	40.0	39.0	40.0	36.0	29.2	25.7	23.2				9
10		35.0	36.0	35.0	35.0	33.0	27.1	24.0	21.8	19.4			10
12		29.2	29.0	28.4	30.0	30.0	23.9	21.2	19.6	17.5	15.0	13.5	12
14			24.0	24.8	24.2	23.5	21.6	18.9	17.8	15.7	13.9	13.0	14
16			19.5	19.6	19.6	19.1	18.7	16.9	16.1	14.5	13.1	12.0	16
18				16.5	16.2	16.2	15.8	15.2	14.6	13.2	12.2	11.2	18
20				13.9	13.7	14.2	13.6	12.6	12.8	12.1	11.3	10.4	20
22					12.4	12.2	11.6	11.2	11.2	11.2	10.2	9.3	22
24					10.8	10.5	10.2	9.8	10.1	9.6	9.3	8.4	24
26						9.2	9.4	9.1	9.1	8.7	8.5	7.8	26
28						8.1	8.3	8.0	7.9	8.1	7.6	7.2	28
30							7.4	7.4	7.0	7.0	6.7	6.6	30
32							6.5	6.6	6.3	6.1	5.9	5.9	32
34								5.9	5.6	5.4	5.2	5.2	34
36								5.2	5.0	4.8	4.5	4.5	36
38									4.6	4.2	4.0	4.0	38
40									4.1	3.8	3.5	3.5	40
42										3.3	3.0	3.0	42
44										2.9	2.7	2.7	44
46											2.3	2.3	46
48											2.0	2.1	48
50												1.8	50

起重性能表

Lifting capacities

T 12.4~58m

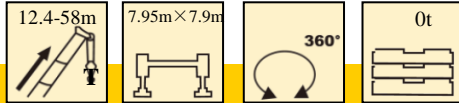


	12.4m	16.6m	20.8m	25m	29.2m	33.4m	37.6m	41.8m	46m	50.2m	54.4m	58m	
3	100.0*	80.0											3
3.5	90.0	80.0											3.5
4	88.0	78.0	72.0	65.0									4
4.5	79.0	74.0	69.0	65.0									4.5
5	70.0	68.0	66.0	62.0	55.0								5
6	60.0	59.0	59.0	56.0	55.0	46.0							6
7	49.0	51.0	50.0	50.0	50.0	43.0	36.4						7
8	39.0	43.8	43.0	43.5	45.0	40.0	33.0	27.4					8
9	30.0	35.5	35.1	36.6	37.3	36.0	29.2	25.7	23.2				9
10		29.9	30.0	31.1	30.9	30.3	27.1	24.0	21.8	19.4			10
12		21.6	22.5	22.7	22.5	22.0	21.4	21.2	19.6	17.5	15.0	13.5	12
14			17.3	17.5	17.9	18.1	17.5	16.5	16.5	15.7	13.9	13.0	14
16			14.0	14.4	14.8	14.5	14.2	13.6	13.8	13.4	13.1	12.0	16
18				12.1	12.2	11.9	12.2	12.1	11.7	11.6	11.2	11.2	18
20				10.1	10.2	9.9	10.2	10.2	10.0	9.6	9.2	9.3	20
22					8.6	8.4	8.7	8.7	8.4	8.1	7.7	7.8	22
24					7.4	7.1	7.4	7.4	7.2	6.9	6.5	6.5	24
26						6.1	6.4	6.4	6.2	5.8	5.5	5.5	26
28						5.2	5.5	5.5	5.3	5.0	4.6	4.7	28
30							4.8	4.8	4.5	4.3	3.9	3.9	30
32							4.1	4.1	3.9	3.6	3.3	3.3	32
34								3.6	3.3	3.1	2.7	2.7	34
36								3.1	2.9	2.6	2.2	2.3	36
38									2.4	2.2	1.8	1.8	38
40									2.0	1.8	1.4	1.5	40
42										1.4	1.1	1.1	42
44										1.2			44

起重性能表

Lifting capacities

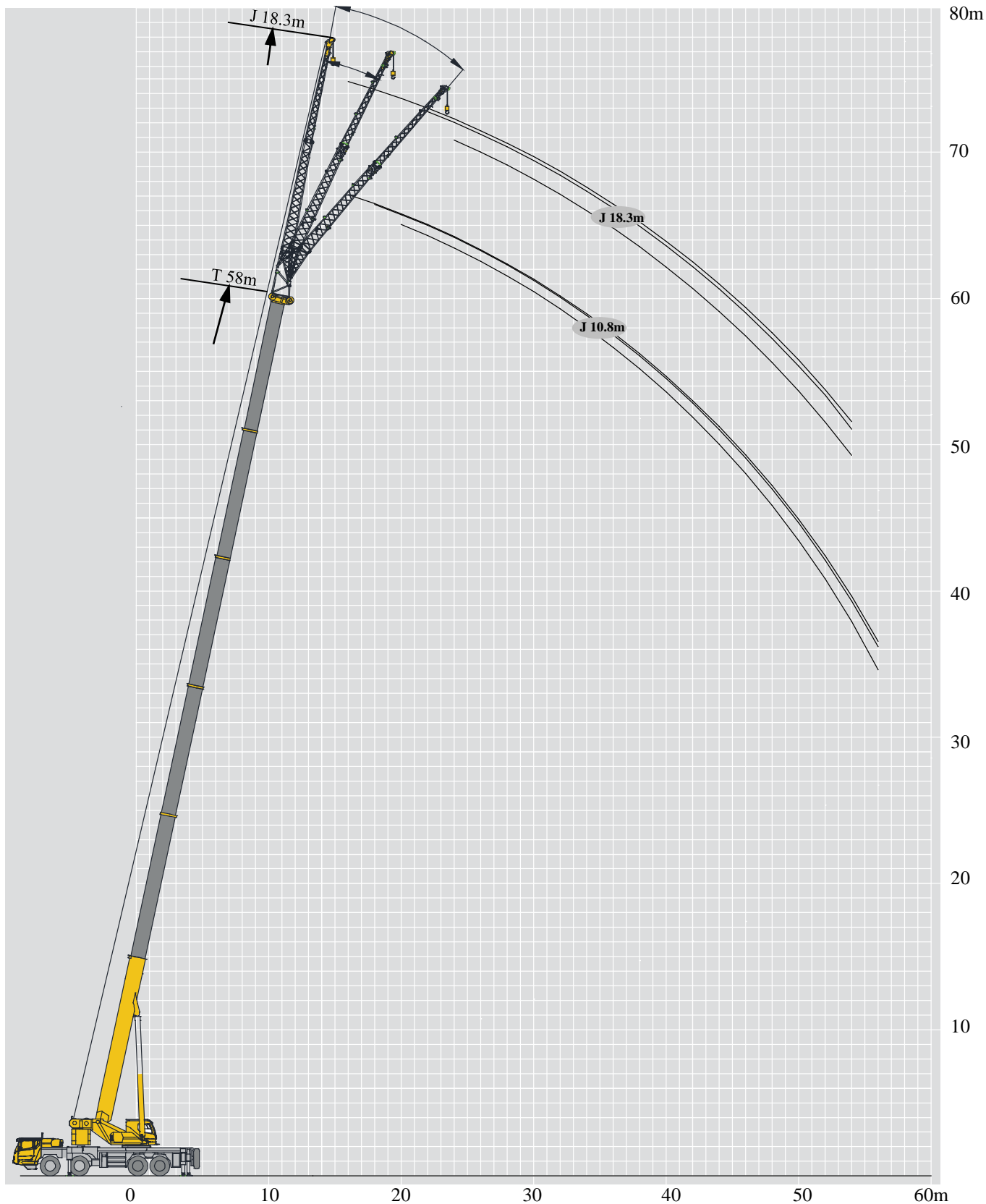
T 12.4~58m



	12.4m	16.6m	20.8m	25m	29.2m	33.4m	37.6m	41.8m	46m	50.2m	54.4m	58m	
3	100.0*	80.0											3
3.5	90.0	80.0											3.5
4	88.0	78.0	72.0	65.0									4
4.5	79.0	74.0	69.0	65.0									4.5
5	70.0	68.0	66.0	62.0	55.0								5
6	49.8	52.4	51.7	51.0	52.9	46.0							6
7	34.0	37.2	38.3	38.7	38.4	37.6	36.4						7
8	25.1	27.9	28.9	29.2	29.0	28.2	27.9	27.4					8
9	19.3	21.9	22.8	23.1	24.2	23.9	23.0	22.3	21.9				9
10		17.7	18.9	19.8	19.9	19.6	20.0	19.5	18.6	18.1			10
12		12.0	13.2	14.1	14.1	13.8	14.2	14.2	13.9	13.5	13.0	13.1	12
14			9.4	10.3	10.4	10.1	10.4	10.5	10.1	9.8	9.3	9.4	14
16			6.9	7.7	7.8	7.5	7.9	7.9	7.6	7.3	6.8	6.9	16
18				5.9	6.0	5.7	6.1	6.1	5.8	5.5	5.0	5.1	18
20				4.6	4.7	4.4	4.7	4.7	4.5	4.2	3.7	3.8	20
22					3.6	3.4	3.7	3.7	3.4	3.2	2.8	2.8	22
24					2.8	2.6	2.9	2.9	2.6	2.3	2.0	2.0	24
26						1.9	2.2	2.2	2.0	1.7	1.3	1.3	26
28						1.4	1.6	1.7	1.4	1.1			28

起升高度曲线图 Lifting heights

副臂
Jib



XCMG—XCT100H

起重性能表

Lifting capacities

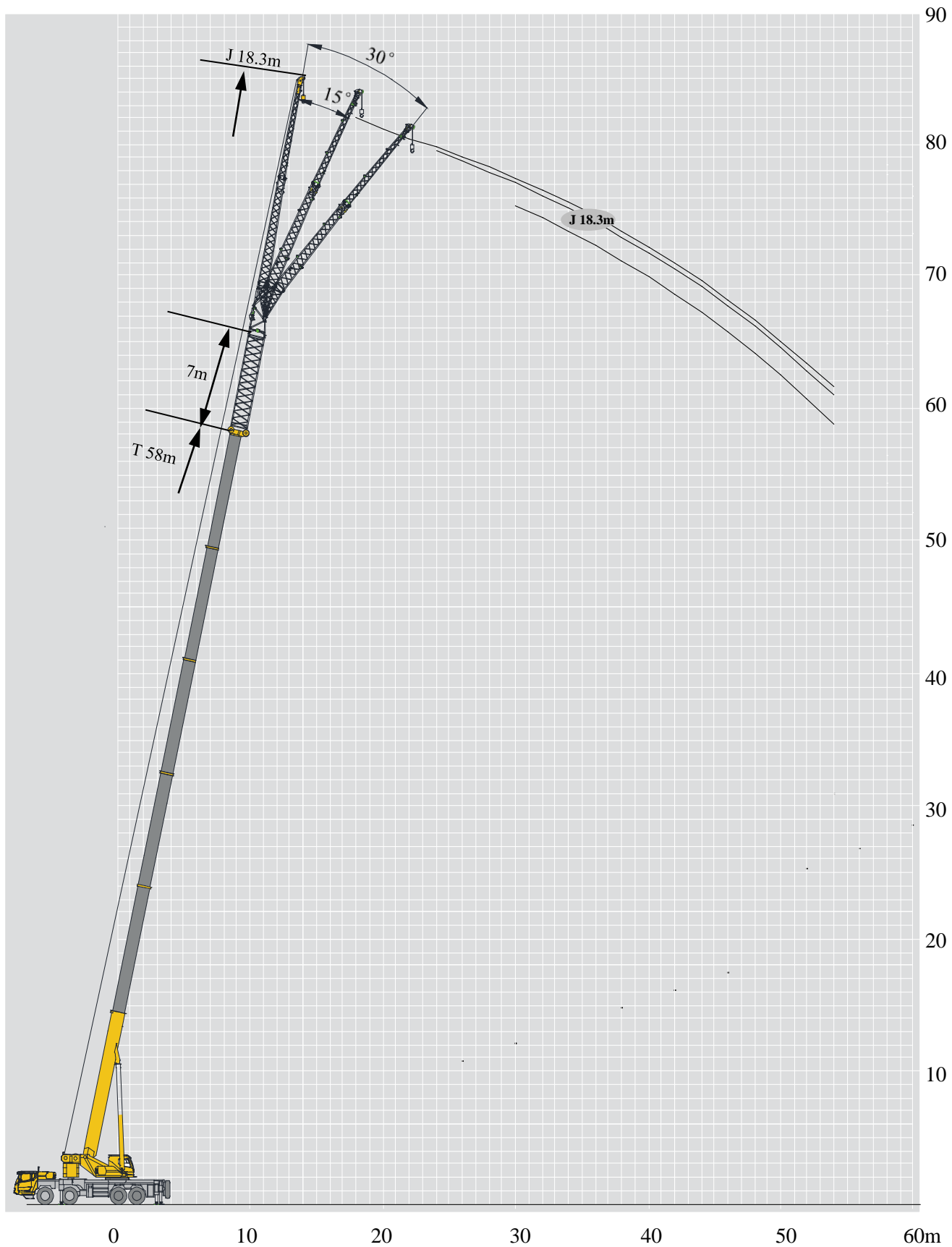
J 10.8m/18.3 m

吊钩高度 m	50.2-58m									吊钩高度 m
	50.2m			54.4 m			58 m			
	0°	15°	30°	0°	15°	30°	0°	15°	30°	
12	7									12
14	7			7						14
16	7	6.2		6.9	6.1		6.6			16
18	6.8	5.8	4.5	6.6	5.8	4.5	6.6	5.8		18
20	6.5	5.7	4.3	6.5	5.7	4.3	6.5	5.7	4.3	20
22	6.3	5.5	4.2	6.3	5.5	4.2	6.3	5.5	4.2	22
24	6	5.3	4.1	6.1	5.3	4.1	5.7	4.9	4.1	24
26	5.8	5.1	4	5.8	5.1	4	5	4.5	4	26
28	5.6	5	3.9	4.6	5	3.9	4.2	4.5	3.9	28
30	5	4.5	3.9	4.5	4.4	3.9	3.8	3.6	3.9	30
32	4.4	4.3	3.8	4.5	4.4	3.6	3.8	3.4	3.1	32
34	4.4	4	3.8	3.4	3.3	3.6	3.8	3.4	3.1	34
36	4.4	4	3.7	3.4	3.3	3.6	3.1	3.4	3.1	36
38	4	3.5	3.6	3.4	3.3	3.6	2.8	2.6	3.1	38
40	3.3	3.2	3.5	3.4	3.3	3.5	2.8	2.5	3.1	40
42	3.3	3	3.4	2.5	2.5	2.7	2.2	2.5	2.3	42
44	3.3	3	3.2	2.5	2.5	2.7	2.1	2.5	2.3	44
46	2.8	2.8	2.8	2.5	2.5	2.7	2.1	1.9	2.3	46
48	2.5	2.5	2.8	2.3	2.4	2.5	2.1	1.9	2.3	48
50	1.9	2.0	2.0	2	2.1	2.2	1.6	1.9	1.7	50
52				1.7	1.8		1.6	1.8	1.7	52
54						1.6	1.4	1.4	1.6	54
56							1.2	1.3	1.3	56
组合	12222			22222			33333			组合

吊钩高度 m	50.2-58m									吊钩高度 m
	50.2m			54.4 m			58 m			
	0°	15°	30°	0°	15°	30°	0°	15°	30°	
14	4.3									14
16	4			3.8			3.8			16
18	3.8	3.3		3.7			3.7			18
20	3.7	3.2		3.5	3.2		3.5			20
22	3.5	3.1	2.6	3.4	3.1		3.3	3.1		22
24	3.4	3.1	2.6	3.3	3.1	2.6	3.3	3	2.5	24
26	3.2	2.9	2.5	3.1	2.9	2.5	3	2.8	2.4	26
28	3.1	2.8	2.4	3	2.8	2.4	2.8	2.7	2.3	28
30	3	2.7	2.3	2.8	2.7	2.3	2.6	2.5	2.2	30
32	2.8	2.6	2.2	2.6	2.5	2.2	2.5	2.4	2.2	32
34	2.6	2.5	2.2	2.5	2.4	2.2	2.4	2.4	2.1	34
36	2.5	2.4	2.1	2.4	2.4	2.1	2.3	2.3	2.1	36
38	2.4	2.3	2.1	2.3	2.3	2.1	2.1	2	2.1	38
40	2.3	2.3	2.1	2.2	2.2	2.1	1.8	1.8	2	40
42	2.2	2.2	2	2.1	1.9	2	1.8	1.8	1.9	42
44	2.1	2.1	2	1.7	1.9	2	1.8	1.8	1.5	44
46	2	2	2	1.6	1.8	1.9	1.5	1.8	1.5	46
48	2	1.9	1.9	1.6	1.7	1.8	1.4	1.5	1.5	48
50	1.9	1.8	1.8	1.5	1.6	1.5	1.4	1.4	1.5	50
52	1.8	1.7	1.7	1.5	1.4	1.5	1.4	1.4	1.5	52
54	1.5	1.6	1.5	1.3	1.4	1.5	1.1	1.4	1.2	54
组合	12222			22222			33333			组合

起升高度曲线图 Lifting heights

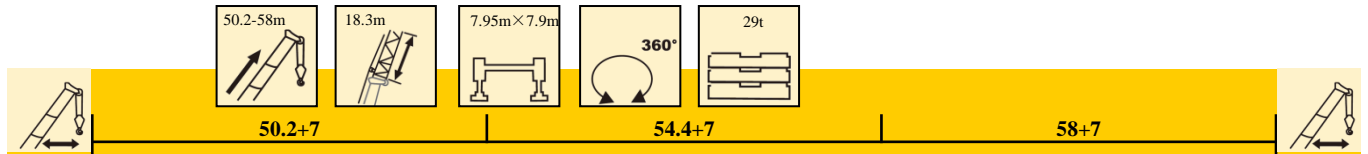
主臂加长节 Telescopic boom extension



起重性能表

Lifting capacities

I 7m



50.2-58m, 18.3m, 7.95m×7.9m, 360°, 29t

	50.2+7			54.4+7			58+7			
	18.3 m									
	0°	15°	30°	0°	15°	30°	0°	15°	30°	
14	4.3									14
16	4			3.8			3.8			16
18	3.8	3.3		3.7			3.7			18
20	3.7	3.2		3.5	3.2		3.5			20
22	3.5	3.1	2.6	3.4	3.1		3.3	3.1		22
24	3.4	3.1	2.6	3.3	3.1	2.6	3.3	3	2.5	24
26	3.2	2.9	2.5	3.1	2.9	2.5	3	2.8	2.4	26
28	3.1	2.8	2.4	3	2.8	2.4	2.8	2.7	2.3	28
30	3	2.7	2.3	2.8	2.7	2.3	2.6	2.5	2.2	30
32	2.8	2.6	2.2	2.6	2.5	2.2	2.5	2.4	2.2	32
34	2.6	2.5	2.2	2.5	2.4	2.2	2.4	2.4	2.1	34
36	2.5	2.4	2.1	2.4	2.4	2.1	2.3	2.3	2.1	36
38	2.4	2.3	2.1	2.3	2.3	2.1	2.1	2	2.1	38
40	2.3	2.3	2.1	2.2	2.2	2.1	1.8	1.8	2	40
42	2.2	2.2	2	2.1	1.9	2	1.8	1.8	1.9	42
44	2.1	2.1	2	1.7	1.9	2	1.8	1.8	1.5	44
46	2	2	2	1.6	1.8	1.9	1.5	1.8	1.5	46
48	2	1.9	1.9	1.6	1.7	1.8	1.4	1.5	1.5	48
50	1.9	1.8	1.8	1.5	1.6	1.5	1.4	1.4	1.5	50
52	1.8	1.7	1.7	1.5	1.4	1.5	1.4	1.4	1.5	52
54	1.5	1.6	1.5	1.3	1.4	1.5	1.1	1.4	1.2	54
组合	12222			22222			33333			组合

符号标识

Description of symbols

常规标识

General symbols

	上车 Superstructure		底盘 Chassis
	起重能力 lifting capacity		车桥 Axle
	吊臂长度 Boom length		行驶速度 Driving speed
	工作幅度 Radius		爬坡能力 Gradability
	吊臂仰角 Boom position		轮胎 Tyres
	主臂起升高度 Hoist height with Boom		支腿 Outriggers
	固定副臂长度 Fixed jib length		吊钩 Hook block
	副臂安装角 Jib offset angle		平衡重 Counterweight
	副臂起升高度 Hoist height with jib		卷扬 Winch
	独立臂头 Independent jib head		360°全回转 360° rotation
	主臂加长节 Boom extension		

主要技术参数表
Transportation plan

类别 Category	项目 Item	单位 Unit	参数 Parameter			
尺寸参数 Dimensions	外形尺寸 (长×宽×高) Outline size (lengthch×width×height)	mm	13985×2780×3990			
	轴距 Wheel base	mm	2000+4000+1500			
	轮距 (前/后) Track (Front/ Rear)	mm	2354/2354/2291/2291			
	前悬/后悬 Front/ Rear overhang	mm	2525/2310			
	前伸/后伸 Front/ Rear extension	mm	1650/0			
重量参数 Weight	最大允许总质量	kg	48000			
	轴荷	一轴 1st axle	kg	12000		
		二轴 2nd axle	kg	12000		
		三轴 3rd axle	kg	12000		
		四轴 4th axle	kg	12000		
动力参数 Power	发动机型号 Engine model	—	MC11.40-50	WP12.375E50	MC11.40-60	MC11.39-30
	额定功率/转速 Engine rated power/rpm	kW/(r/min)	297/1900	276/1900	297/1900	290/1900
	最大净功率/转速 Max. net power/rpm	kW/(r/min)	294/1900	271/1900	294/1900	287/1900
	最大输出扭矩/转速 Engine rated torque/rpm	N.m/(r/min)	1900/1000 ~ 1400	1800/1000 ~ 1400	1907/1000-1400	1900/1000 ~ 1400
行驶参数 Travel	最高车速 Max. travel speed	km/h	≥90			
	最低稳定车速 Min. travel speed	km/h	1.7 ~ 3			
	最小转弯直径 Min. turning diameter	m	≤20			
	臂头最小转弯直径 Min. turning diameter at boom tip	m	≤25.2			
	最小离地间隙 Min. ground clearance	mm	367			
	接近角 Approach angle	°	21			
	离去角 Departure angle	°	15			
	制动距离 (制动初速度为 30km/h) Braking distance (at 30 km/h)	m	≤10			
	最大爬坡能力 Max. grade ability	%	≥45			
	百公里油耗 Fuel consumption per 100 km	L	45			
噪音 Noise	加速行驶机外噪声 Exterior noise level	dB(A)	≤88			
	驾驶员耳旁噪声 Noise level at seated position	dB(A)	≤90			

主要技术参数表

Transportation plan

类别 Category	项目 Item		单位 Unit	参数 Parameter	
主要性能参数 Main performance	最大额定总起重量 Max. total rated lifting capacity		t	100	
	最小额定工作幅度 Min. rated working radius		m	3	
	转台尾部回转半径 Turning radius at turntable tail	平衡重处 Counterweight	mm	4465	
		副卷处 Auxiliary winch	mm	4580	
	最大起重力矩 Max. load moment	基本臂 Base boom	kN.m	3528	
		最长主臂 Fully-extended boom	kN.m	2038	
		最长主臂+副臂 Fully-extended boom + Jib	kN.m	1035	
	支腿跨距 Outrigger span	纵向 Longitudinal	m	7.95	
		横向 Lateral	m	7.9	
	起升高度 Hoist height	基本臂 Base boom	m	12.8	
		最长主臂 Fully-extended boom	m	58	
		最长主臂+副臂 Fully-extended boom + Jib	m	82	
	起重臂长度 Boom length	基本臂 Base boom	m	12.4	
		最长主臂 Fully-extended boom	m	58	
		最长主臂+副臂 Fully-extended boom + Jib	m	83.3	
副臂安装角 Jib offset angle		°	0、15、30		
工作速度参数 Working speed	起重臂起臂时间 Boom raising time		s	≤50	
	起重臂全伸时间 Boom fully extended time		s	≤450	
	最大回转速度 Max. slewing speed		r/min	≥1.8	
	支腿收放时间 Outrigger extending and retracting time	水平支腿 Outrigger beam	收 Retracting	s	≤30
			放 Extending	s	≤40
		垂直支腿 Outrigger jack	收 Retracting	s	≤30
			放 Extending	s	≤40
起升速度 (单绳,第四层,空载) Hoisting speed (single line, 4th layer, no load)	主起升机构 Main winch		m/min	≥135	
	副起升机构 Auxiliary winch		m/min	≥90	
噪声 Noise	机外辐射 Exterior noise level		dB (A)	≤124	
	司机位置处 Noise level at seated position		dB (A)	≤90	

注意事项

Notes

1. 表中额定总起重量值，是在平整的坚固地面上本起重机能够保证的最大总起重量，包括吊钩和吊具的重量，所以为了估算重物重量，必须减去上述的装置重量。
2. 表中的工作幅度为起吊重物离地时起重物到起重机回转轴线的水平距离，是包括起重臂变形量在内的实际值，因而起吊前应考虑起重臂变形量。
3. 只允许在5级(瞬时风速14.1m/s，风压125N/m²)风以下进行作业。
4. 吊重前操作者必须对物体的重量和工作范围了解后选择合适的作业工况，严禁超出表中的数值。幅度及臂长在相邻两个数值之间时，应依据两个数值中较小值确定起重作业。
5. 应按主臂仰角范围作业，即使是空载，也不应使主臂仰角处于范围外，谨防整机倾翻。
6. 表中的主臂长度应要按照每节臂的伸缩要求进行伸出。

1. The total rated loads given in the rated load charts are the maximum lifting capacity when the crane is set up on firm and level ground, which includes the weight of the hook block and slings. The weight of above-mentioned devices should be deducted to correctly calculate the load weight.
2. The working radius shown in the rated load charts is the radius when the load is lifted off the ground, and it is the actual value including loaded boom deflection.
3. A lifting operation is permissible only when the wind force is below grade 5 (instantaneous wind speed is 14.1 m/s, wind pressure is 125 N/m²).
4. Before beginning lifting operation, the operator should know the weight of the load to be lifted and its working range, and then select proper working conditions. Never operate the crane beyond the limit shown in the chart. Use the lower value from the chart when the boom length or working radius is between the range of values.
5. Observe the boom angle limit. Never operate the crane with the boom angle beyond the recommended limit even if a load is not being carried. Otherwise, the crane will tip.
6. The boom length given in the rated load charts should accord with the telescoping code of boom sections .



地址：江苏省徐州市经济技术开发区高新路68号

Add: No.68 Gaoxin Road, Xuzhou economic and technological development zone, Jiangsu ,China

电话(Tel): +86-516-83462242/83462350

质量监督电话(Quality Inquiry Tel): +86-516-87888268

备件电话(Spare Parts Tel): +86-516-83461542

邮编(Post Code): 221004

网址(Web): www.xcmg.com/qizhongji

服务热线 Service Tel

400-110-9999

400-001-5678



本印刷品不属于合同。出于产品不断改进的需要，我们保留对产品型号、参数、配置进行变更的权利，恕不另行通知。图片仅供参考，具体产品以实物为准。图片中产品可能并非标准配置，部分部件可能需要另行购置。办理牌照和上路行驶需遵守当地法规。

This print does not belong to the contract. We reserve the right to modify the design (such as product model, parameters and configuration) without notice for improvement. The pictures are just for reference. The product in the picture may not be standard configuration. Some parts need to be purchased separately. Conform to the local laws for license application and road traveling.

XCMG—XCT100H