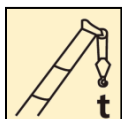


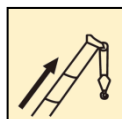
# XCT35汽车起重机 / Truck Crane

## 技术规格书

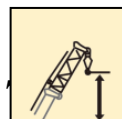
Basic technical specification



35 t



42 m



56.8m



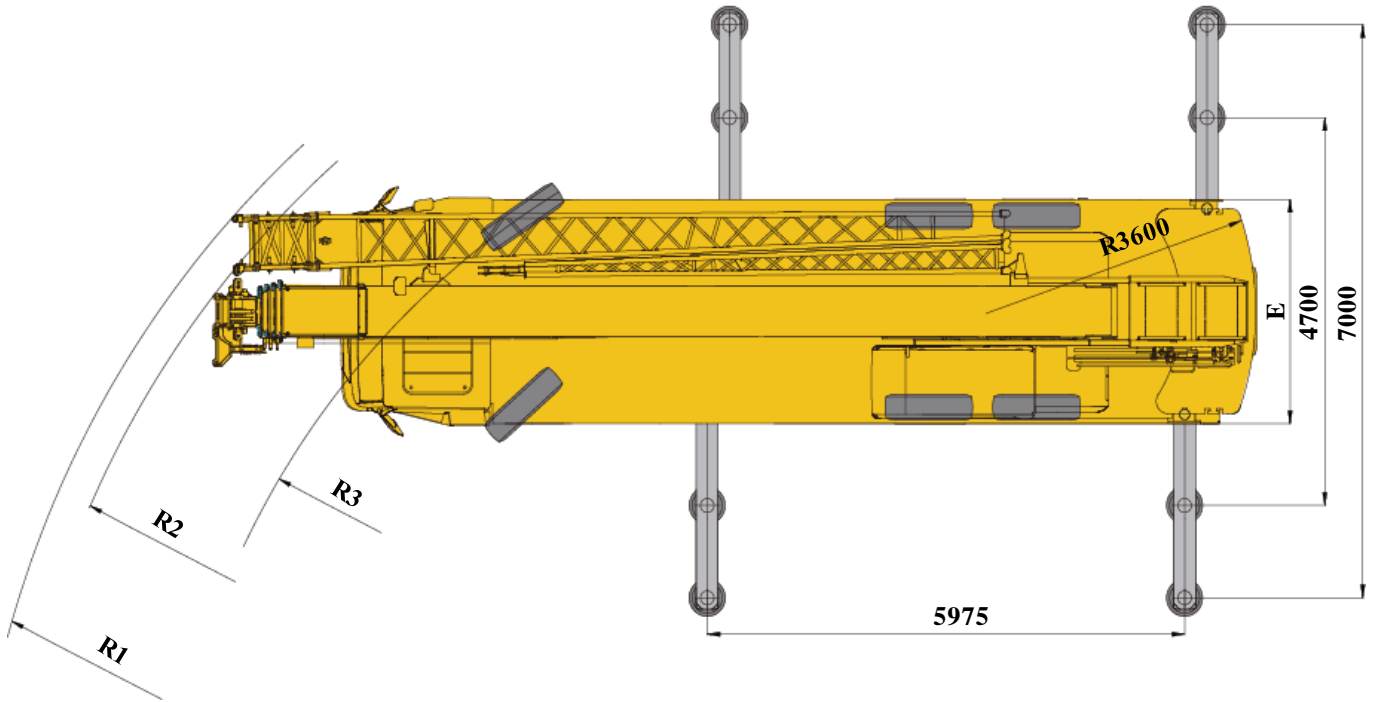
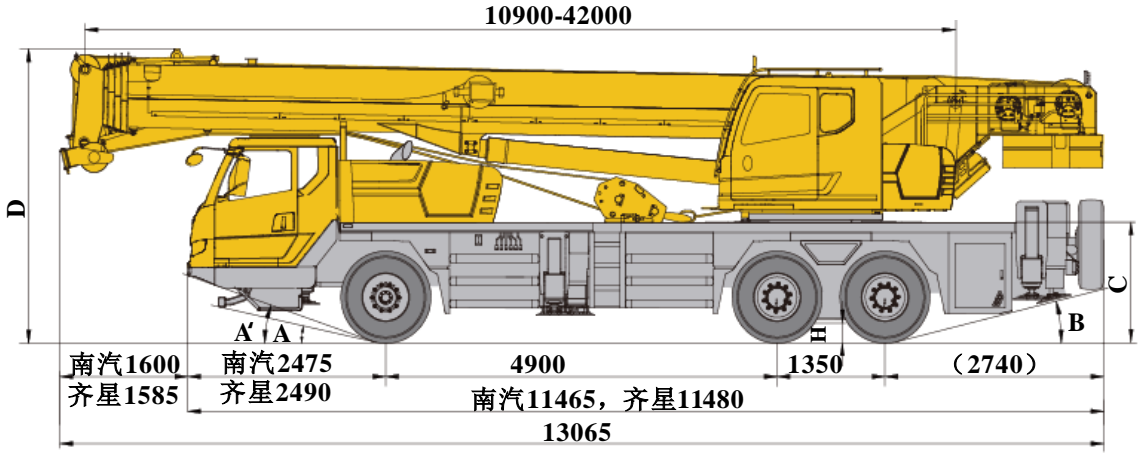
2020年02月02版

# 目录

## Content

<b>目录</b> <b>Content</b>	
尺寸参数 Dimensions	3
技术规格 Product Specifications	4-7
重量/作业速度 Weight / Working speeds	8
臂架组合方案 Boom / Jib combinations	9
主臂 Boom	10-11
副臂 Jib	12-13
符号标识 Description of symbols	14
主要技术参数表 Transportation plan	15-16
注意事项 Notes	17

# 尺寸参数 Dimensions



	A	A'	B	C	D	E	R1	R2	R3	H
315/80 R22.5	12°	18°/19°	13.5°	1417	3540	2750	14200	13750	11000	260

# 技术规格


## Technical specifications

 底盘	配置
<b>车架</b>	徐工设计、制造，全覆盖式走台板，防扭转箱型结构，高强度钢材制造。 ●
<b>支腿</b>	4支腿；纵向H形布置，操作杆控制液压动作；可由底盘任一侧同时或单独控制各支腿的动作，设有水平仪；带第五支腿；且垂直支腿带有液压双向锁 支脚盘尺寸：450mm×450mm 最大起重量时支腿反力：402.68KN。 ●
<b>发动机</b>	SC9DF300.2Q5，直列六缸水冷电控柴油发动机，上柴，额定功率221kW/1900rpm，最大扭矩1400Nm/1400rpm，国V排放标准。燃油箱容积：220L。 ●
<b>变速箱</b>	采用陕齿9JS135TA机械式变速箱，手动远距离软轴操纵，全同步器；9个前进档，1个倒档，工作稳定、可靠。 ●
<b>车桥</b>	3桥底盘，2、3桥驱动，1桥转向，高强度承载桥，引进国外先进技术设计，名牌厂家制造，性能可靠。 第一桥：单胎，转向不驱动； 第二桥：双胎，驱动不转向； 第三桥：双胎，驱动不转向。 ●
<b>悬挂</b>	前悬架采用少片变截面钢板弹簧，自重轻，噪音低，舒适性好；后悬架采用橡胶悬架，V型推力杆，自重轻，定位效果好，免维护，维修方便。 ●
<b>轮胎</b>	315/80R22.5-22PR，无内胎轮胎，重量轻，散热好，行驶噪音低，承载力强，使用寿命长。 ●


<b>制动</b>	行车制动：脚踏板操纵的双回路气压制动。一轴为盘式制动器，二、三轴为鼓式制动器。第一回路作用于二轴车轮上，第二回路作用于二、三轴车轮上。 驻车制动：放气制动，作用于二、三轴上，通过各轴上的弹簧储能气室起作用。 辅助制动：发动机排气制动+发动机缸内缓速制动。 ●
<b>转向</b>	1桥机械转向+液压助力。 ●
<b>驾驶室</b>	豪华驾驶室。配备电动升降器的安全玻璃、可调式座椅、电动调节后视镜、可调节高度及角度方向盘、液晶显示器和CD音响、丝网地垫等； 2公斤灭火器。 标配冷暖空调。 ●
<b>电气系统</b>	直流24伏特，串联12伏特的电池组2个。发电机：28.5±0.3伏特-70安培。 ●

# 技术规格

## Technical specifications

 上车	配置
<b>结构</b>	徐工设计、制造，高强度钢材制造。 ●
<b>液压系统</b>	发动机驱动变量柱塞泵，用于起升、变幅、伸缩。负载敏感式比例多路换向阀，带有抗冲击阀、防气蚀阀；风冷式液压油散热器；液压油箱容积：490L ●
<b>操纵方式</b>	液控先导操纵系统，由左右2个操纵手柄控制，由液压泵和比例阀进行液压先导式控制起重机的全部动作。 ●
<b>主起升机构</b>	液压控制调速，装有双折线绳槽卷筒，由液压马达通过行星齿轮减速器驱动，内置常闭式制动器并带有平衡阀； ●
<b>副起升机构</b>	液压控制调速，装有双折线绳槽卷筒，由液压马达通过行星齿轮减速器驱动，内置常闭式制动器并带有平衡阀。 ●
<b>回转机构</b>	四点接触球式回转支承，由液压马达驱动行星齿轮回转机构减速器驱动，可连续回转360°；具有动力控制或自由回转的功能，可无级调速。 ●
<b>变幅机构</b>	单缸前支变幅，带有平衡阀。 ●
<b>操纵室</b>	新型钢制操纵室，装有无视野死角的前景窗，安全玻璃，车窗装有遮阳板，推拉式车门，座椅靠背可倾斜定位，操纵杆安装在座椅两侧的扶手上；带推拉踏板；前窗顶窗装有雨刮器；顶窗双层遮阳帘，后窗遮阳帘；电加热功能座椅垫 ● 标配冷暖空调；2kg灭火器

<b>安全装置</b>	液压平衡阀；液压溢流阀；液压双向锁；力矩限制器；三圈保护器，防止钢丝绳过放；臂头设置高度限位，防止钢丝绳过卷；三色报警灯 ●
	风速仪；卷扬监视装置；上车水平仪 ○
<b>配重</b>	4.8 t ●
<b>起重钩</b>	35t钩 ●
	5t 钩 ○

 臂架系统	配置
<b>主臂</b>	5节，“U”形截面的筒形焊接结构。双缸绳排伸缩机构 ● 主臂长度：10.9m ~ 42m。
<b>臂端单滑轮</b>	单滑轮，安装在主臂顶端用于单股钢丝绳起重作业，起重性能与9.2m副臂 0°安装角时的起重性能，但最大起重量不超过4t ●
<b>固定副臂</b>	2节桁架式焊接结构，具有0°、15°、30°三种固定副臂安装角 ● 固定副臂长度：9.2m ~ 16m

产品各部件明细如上所述，具体部件明细请参照产品报价单

符号说明：

- —— 表示标准配置；
- —— 表示选装配置。

# 技术规格

## Technical specifications



### Chassis

<b>Frame</b>	Designed and manufactured by XCMG, it is made of high strength steel with fully covered walking surface and anti-torsion box-typed structure.	●
<b>Outriggers</b>	4 outriggers, H-shaped arrangement, lateral and vertical outrigger controlled by the hydraulic control. Control levers are located on both sides of the chassis, with a luminous level gauge equipped, with the fifth jack, and the vertical outrigger has two-way hydraulic lock. Outrigger float dimension: 450mm×450mm Max. outrigger reaction force: 402.68KN.	●
<b>Engine</b>	SC9DF300.2Q5, in-line six-cylinder water-cooled EFI diesel engine, manufactured by Shanghai Diesel Engine Co., Ltd., rated power 221kW /1900rpm, max. torque 1400Nm / 1400rpm, the national V emission standards. Fuel tank capacity : 220L.	●
<b>Transmission</b>	FAST manually mechanical control , 9-speed available, synchronizer is equipped. with 9 forward gears and 1 reverse gears available,Stable and reliable work.	●
<b>Axles</b>	High strength axle with reliable performance from Meritor. 1st axle for Steering,2nd axle and 3rd axle for driving.	●
<b>Suspensions</b>	Front suspension: variable cross-section leaf spring suspension, light weight, low noise and good comfort; Rear suspension: V-type thrust rod structure,light weight, good positioning effect, convenient maintenance.	●
<b>Tires</b>	315/80R22.5-22PR , tubeless tire, light weight, good heat dissipation, low noise, strong bearing capacity, long service life.	●

<b>Braking</b>	Driving brake: double circuit pneumatic brake operated by pedal. The first axle is disc brake, the second and third are drum brake. The first loop acts on the first axle wheel, the second loop acts on the wheel of the second and third axles. Parking brake: exhaust brake, acting on the second and third axles, with the energy storage gas chamber is acted by the spring on each axle. Auxiliary brake: engine exhaust brake and engine cylinder slow braking.	●
<b>Steering</b>	Mechanically steering mechanism of the first axle with hydraulic power assisted.	●
<b>Driver's cab</b>	Luxurious driver's cab. Equipped with adjustable seats, safety glass, electrically operated door window lifter, electric-adjustable mirrors, steering wheel adjustable in height and angle, liquid crystal display, CD player and new floor mat, etc. A fire extinguisher of 2 kg is available. Heater and air conditioner are standard.	●
<b>Electric system</b>	24V DC, two sets of 12 V battery in series. Generator: 28.5±0.3V-70 A	●

# 技术规格

## Technical specifications



### Superstructure

<b>Frame</b>	Designed and manufactured by XCMG, made of high strength steel.	●
<b>Hydraulic system</b>	Quadruple pump is driven by the engine. constant delivery pump is used for lifting, elevating, telescoping and slewing; Load sensitive proportional multi-way change valve, impact-resistant valve and anti-cavitation corrosion valve are equipped. Air-cooled hydraulic oil radiator; Volume of hydraulic oil tank: 490L	●
<b>Operating mode</b>	Pilot hydraulic control is used for controlling the superstructure. All crane movements are controlled by hydraulic pump and proportional valve through two control levers at left and right sides.	●
<b>Main winch</b>	Hydraulic control is used for speed regulation. The system is driven by a hydraulic motor through a planetary gear reducer, with a normally closed brake, a balance valve and a grooved drum equipped.	●
<b>Auxiliary winch</b>	Hydraulic control is used for speed regulation. The system is driven by a hydraulic motor through a planetary gear reducer, with a normally closed brake, a balance valve and a grooved drum equipped.	●
<b>Slewing system</b>	Four-point contact-ball slewing ring is driven by the planetary gear reducer of slewing mechanism, which is driven by a hydraulic motor, and may continuously slew 360°. Power control and free slewing function as well as stepless speed regulation are available.	●
<b>Elevating system</b>	A single cylinder is adopted for front support elevating with balance valve equipped.	●
<b>Operator's cab</b>	New steel cab with a full-view windshield, safety glass, sun shield and adjustable operator's seat. Windshield wiper and roof window wiper are fitted. Crane control levers are integrated into armrests. A sliding door and a pull-out step are designed for easy and safe access to the cab. Double-layer sun shield is adopted for the roof window; sun shield is also equipped at the rear window; electric heating for the seat is available. Air conditioner and fire extinguisher of 2 kg are standard.	●

<b>Safety devices</b>	Hydraulic balance valve, hydraulic relief valve, double-way hydraulic valve, LMI, lowering limiter for preventing wire rope from over-releasing, anti-two block at boom head for preventing wire rope from over-winding and tri colored light bar. Anemometer; winch monitoring device; superstructure level gauge	● ○
<b>Counterweight</b>	4.8t	●
<b>Hook block</b>	35 t hook block 5 t hook block	● ○



### Boom and jib system

<b>Boom</b>	5-section, U-shape cross section, welding structure. Boom length:10.9m~42m.	●
<b>Single top</b>	Single top is installed on the top of main boom, for single wire rope hoist. Its lifting performance is the same as that for jib(9.2m), with 0° jib offset angles.	●
<b>Fixed jib</b>	2-section, Lattice jib, welded structure. Three offset angles of 0°, 15° and 30°. Fixed jib length: 9.2m~16m	●

**Product parts list is as mentioned above. Please refer to the product quotation for specific parts.**

**Symbol explanation:**

- —it means the standard configuration;
- —it means the optional configuration.

## 重量 Weight






车桥 Axle	1	2	3	总重量 Total weight
t	9	13	13	35








吊钩 Hook	倍率 No. of lines	吊钩重量 Weight kg	吊钩尺寸 Dimensions mm	备注 Remarks
35t	8	360	389×504×1362	单钩 Single hook , 标配 Standard
5t	1	100	300×300×535	单钩 Single hook , 标配 Standard

## 作业速度 Working speeds



		
315/80R22.5	3 ~ 90	42%



作业机构 Drive	作业速度 Working speed	最大单绳拉力 Max. single line pull	钢丝绳直径/长度 Rope diameter/ length
	0-130 m/min , 单绳 , 第四层 m/min, single line, 4th layer	46.9 kN	18 mm/180 m
	0-130 m/min , 单绳 , 第四层 m/min, single line, 4th layer	46.9 kN	18 mm/125 m
	0-2 r/min		
	从-2°抬起至80°约40s Approx. 40s for boom elevation from -2° to 80°		
	从10.9m伸出至42m约80s Approx. 80s for boom extension from 10.9m to 42m		



# 臂架组合方案

## Boom/ Jib combinations

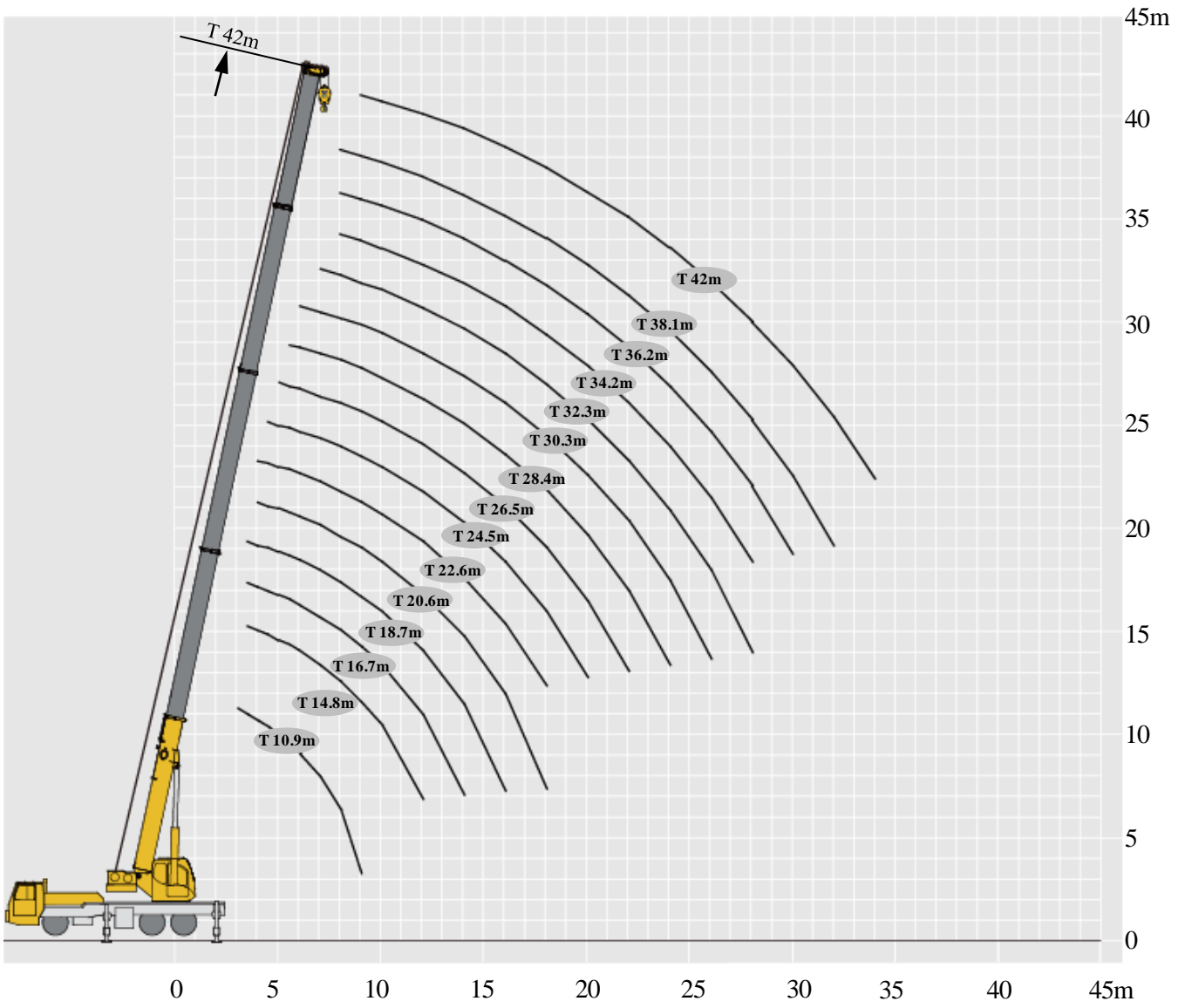


主臂  
Telescopic boom

T : 10.9~42m

副臂  
Jib

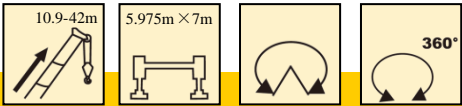
T : 10.9~42m  
J : 9.2~16m



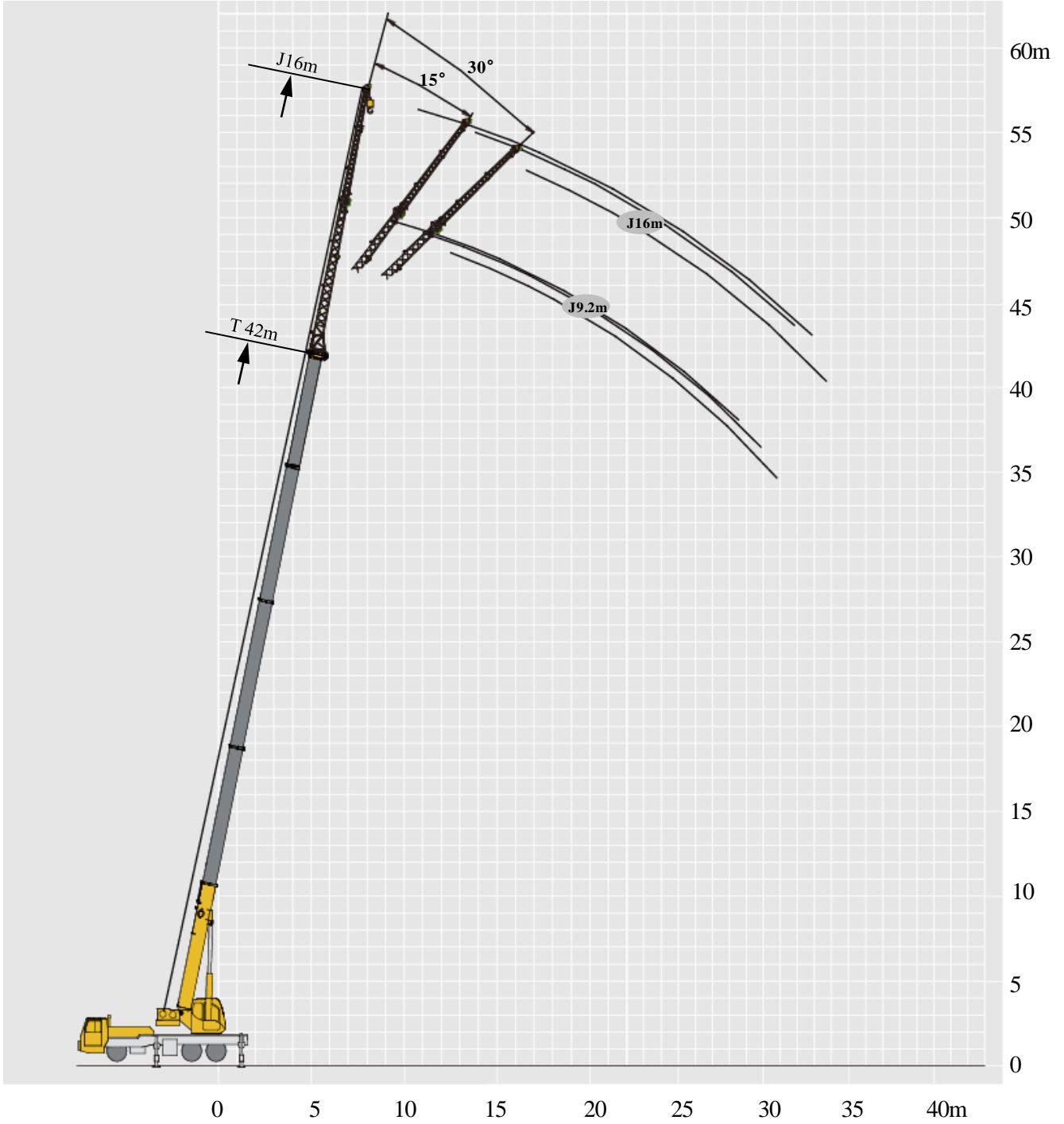
# 起重性能表

## Lifting capacities

T 10.9~42m




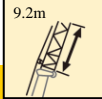
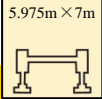


	10.9m	14.8 m	18.7m	24.5m	30.3 m	36.2m	42.0m	
3	35000							3
3.5	35000	34000	26500					3.5
4	34000	31000	26000					4
4.5	31000	29000	25000	19000				4.5
5	28500	27000	24000	18500				5
5.5	26500	24500	23000	17500				5.5
6	24000	23000	22200	16500	14000			6
7	20000	19000	19750	15000	13200	10000		7
8	15500	16400	16200	14000	12100	9400		8
9	12200	13100	12900	13000	11200	8800	7300	9
10		10800	10500	11500	10300	8300	6600	10
12		7500	7200	8200	8700	7200	6000	12
14			5200	6000	6500	6500	5300	14
16			3700	4600	5000	5350	5300	16
18				3500	3900	4250	4800	18
20				2600	3100	3400	3600	20
22					2400	2700	2900	22
24					1800	2100	2350	24
26					1400	1650	1900	26
28						1250	1500	28
30						950	1200	30
32							900	32
34							650	34

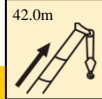
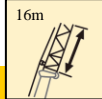
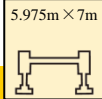




# 起重性能表

## Lifting capacities

T 42m

	    			
	0°	15°	30°	
78	4000	2500	2100	78
75	3500	2200	2000	75
72	3200	2000	1900	72
70	3000	1900	1800	70
65	2500	1800	1700	65
60	1500	1200	1100	60
55	900	800	700	55
50	600	500	400	50

	    			
	0°	15°	30°	
78	2100	1400	1100	78
75	2000	1200	1000	75
72	1800	1100	900	72
70	1700	1000	800	70
65	1400	800	700	65
60	1000	700	600	60
55	600	500	400	55
50	400			50

# 符号标识

## Description of symbols

### 常规标识

#### General symbols

	上车 Superstructure		底盘 Chassis
	起重能力 lifting capacity		车桥 Axle
	吊臂长度 Boom length		行驶速度 Driving speed
	工作幅度 Radius		爬坡能力 Gradability
	吊臂仰角 Boom position		轮胎 Tyres
	主臂起升高度 Hoist height with Boom		支腿 Outriggers
	固定副臂长度 Fixed jib length		使用第五支腿360°全回转 360° rotation with 5th jack
	副臂安装角 Jib offset angle		不使用第五支腿侧后方作业 Over side or over rear of the crane
	副臂起升高度 Hoist height with jib		
	吊钩 Hook block		
	卷扬 Winch		

# 主要技术参数表

## Transportation plan

类别 Category	项目 Item	单位 Unit	参数 Parameter	
尺寸参数 Dimensions	外形尺寸 (长×宽×高) Outline size (lengthch×width×height)	mm	13065×2750×3540	
	轴距 Wheel base	mm	4900+1350	
	轮距 (前/后) Track (Front/ Rear)	mm	2308/2079/2079	
	前悬/后悬 Front/ Rear overhang	mm	2475或2490/2740	
	前伸/后伸 Front/ Rear extension	mm	1600或1585/0	
重量参数 Weight	最大允许总质量	kg	35000	
	轴荷	一轴 1st axle	kg	9000
		二轴 2nd axle	kg	13000
		三轴 3rd axle	kg	13000
动力参数 Power	发动机型号 Engine model	—	SC9DF300.2Q5	
	额定功率/转速 Engine rated power/rpm	kW/(r/min)	221/1900	
	最大净功率/转速 Max. net power/rpm	kW/(r/min)	219/1900	
	最大输出扭矩/转速 Engine rated torque/rpm	N.m/(r/min)	1400/1400	
行驶参数 Travel	最高车速 Max. travel speed	km/h	≥90	
	最低稳定车速 Min. travel speed	km/h	2.5 ~ 3	
	最小转弯直径 Min. turning diameter	m	≤22	
	臂头最小转弯直径 Min. turning diameter at boom tip	m	≤28.4	
	最小离地间隙 Min. ground clearance	mm	260	
	接近角 Approach angle	°	19或18/12	
	离去角 Departure angle	°	13.5	
	制动距离 (制动初速度为30km/h) Braking distance (at 30 km/h)	m	≤10	
	最大爬坡能力 Max. grade ability	%	≥42	
	百公里油耗 Fuel consumption per 100 km	L	32	
噪音 Noise	加速行驶机外噪声 Exterior noise level	dB(A)	≤84	
	驾驶员耳旁噪声 Noise level at seated position	dB(A)	≤90	

# 主要技术参数表

## Transportation plan

类别 Category	项目 Item		单位 Unit	参数 Parameter	
主要性能参数 Main performance	最大额定总起重量 Max. total rated lifting capacity		t	35	
	最小额定工作幅度 Min. rated working radius		m	3	
	转台尾部回转半径 Turning radius at turntable tail	平衡重处 Counterweight	mm	3600	
		副卷处 Auxiliary winch	mm	3518	
	最大起重力矩 Max. load moment	基本臂 Base boom	kN.m	1458	
		最长主臂 Fully-extended boom	kN.m	864	
		最长主臂+副臂 Fully-extended boom + Jib	kN.m	545	
	支腿跨距 Outrigger span	纵向 Longitudinal	m	5.975	
		横向 Lateral	m	7	
	起升高度 Hoist height	基本臂 Base boom	m	10.1	
		最长主臂 Fully-extended boom	m	41	
		最长主臂+副臂 Fully-extended boom + Jib	m	56.8	
	起重臂长度 Boom length	基本臂 Base boom	m	10.9	
		最长主臂 Fully-extended boom	m	42	
		最长主臂+副臂 Fully-extended boom + Jib	m	58	
副臂安装角 Jib offset angle		°	0、15、30		
工作速度参数 Working speed	起重臂起臂时间 Boom raising time		s	≤40	
	起重臂全伸时间 Boom fully extended time		s	≤80	
	最大回转速度 Max. slewing speed		r/min	≥2.5	
	支腿收放时间 Outrigger extending and retracting time	水平支腿 Outrigger beam	收 Retracting	s	≤20
			放 Extending	s	≤30
		垂直支腿 Outrigger jack	收 Retracting	s	≤25
			放 Extending	s	≤35
起升速度(单绳,第四层,空载) Hoisting speed (single line, 4th layer, no load)	主起升机构 Main winch		m/min	≥130	
	副起升机构 Auxiliary winch		m/min	≥130	
噪声 Noise	机外辐射 Exterior noise level		dB ( A )	≤122	
	司机位置处 Noise level at seated position		dB ( A )	≤90	



## 注意事项

### Notes

1. 表中额定总起重量值，是在平整的坚固地面上本起重机能够保证的最大总起重量，包括吊钩和吊具的重量，所以为了估算重物重量，必须减去上述的装置重量。
2. 表中的工作幅度为起吊重物离地时起重物到起重机回转轴线的水平距离，是包括起重臂变形量在内的实际值，因而起吊前应考虑起重臂变形量。
3. 只允许在5级(瞬时风速14.1m/s，风压125N/m<sup>2</sup>)风以下进行作业。
4. 吊重前操作者必须对物体的重量和工作范围了解后选择合适的作业工况，严禁超出表中的数值。幅度及臂长在相邻两个数值之间时，应依据两个数值中较小值确定起重作业。
5. 应按主臂仰角范围作业，即使是空载，也不应使主臂仰角处于范围外，谨防整机倾翻。
6. 表中的主臂长度应要按照每节臂的伸缩要求进行伸出。

1. The total rated loads given in the rated load charts are the maximum lifting capacity when the crane is set up on firm and level ground, which includes the weight of the hook block and slings. The weight of above-mentioned devices should be deducted to correctly calculate the load weight.
2. The working radius shown in the rated load charts is the radius when the load is lifted off the ground, and it is the actual value including loaded boom deflection.
3. A lifting operation is permissible only when the wind force is below grade 5 (instantaneous wind speed is 14.1 m/s, wind pressure is 125 N/m<sup>2</sup>).
4. Before beginning lifting operation, the operator should know the weight of the load to be lifted and its working range, and then select proper working conditions. Never operate the crane beyond the limit shown in the chart. Use the lower value from the chart when the boom length or working radius is between the range of values.
5. Observe the boom angle limit. Never operate the crane with the boom angle beyond the recommended limit even if a load is not being carried. Otherwise, the crane will tip.
6. The boom length given in the rated load charts should accord with the telescoping code of boom sections.



地址：江苏省徐州市经济技术开发区高新路68号

Add : No. 68, Gaoxin Road, Economic Development  
Zone, Xuzhou, Jiangsu Province, China

电话(Tel) : +86-516-83462242/83462350

质量监督电话(Quality Inquiry Tel) : +86-516-87888268

备件电话(Spare Parts Tel) : +86-516-83461542

邮编(Post Code) : 221004

网址(Web) : [www.xcmg.com/qizhongji](http://www.xcmg.com/qizhongji)

服务热线 Service Tel

400-110-9999

400-001-5678



本印刷品不属于合同。出于产品不断改进的需要，我们保留对产品型号、参数、配置进行变更的权利，恕不另行通知。图片仅供参考，具体产品以实物为准。图片中产品可能并非标准配置，部分部件可能需要另行购置。办理牌照和上路行驶需遵守当地法规。

This print does not belong to the contract. We reserve the right to modify the design (such as product model, parameters and configuration) without notice for improvement. The pictures are just for reference. The product in the picture may not be standard configuration. Some parts need to be purchased separately. Conform to the local laws for license application and road traveling.