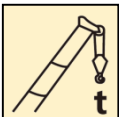


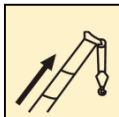
XCT80 汽车起重机 / Truck Crane

技术规格书

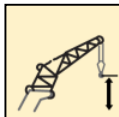
Technical specifications



80t



47.5m



64m

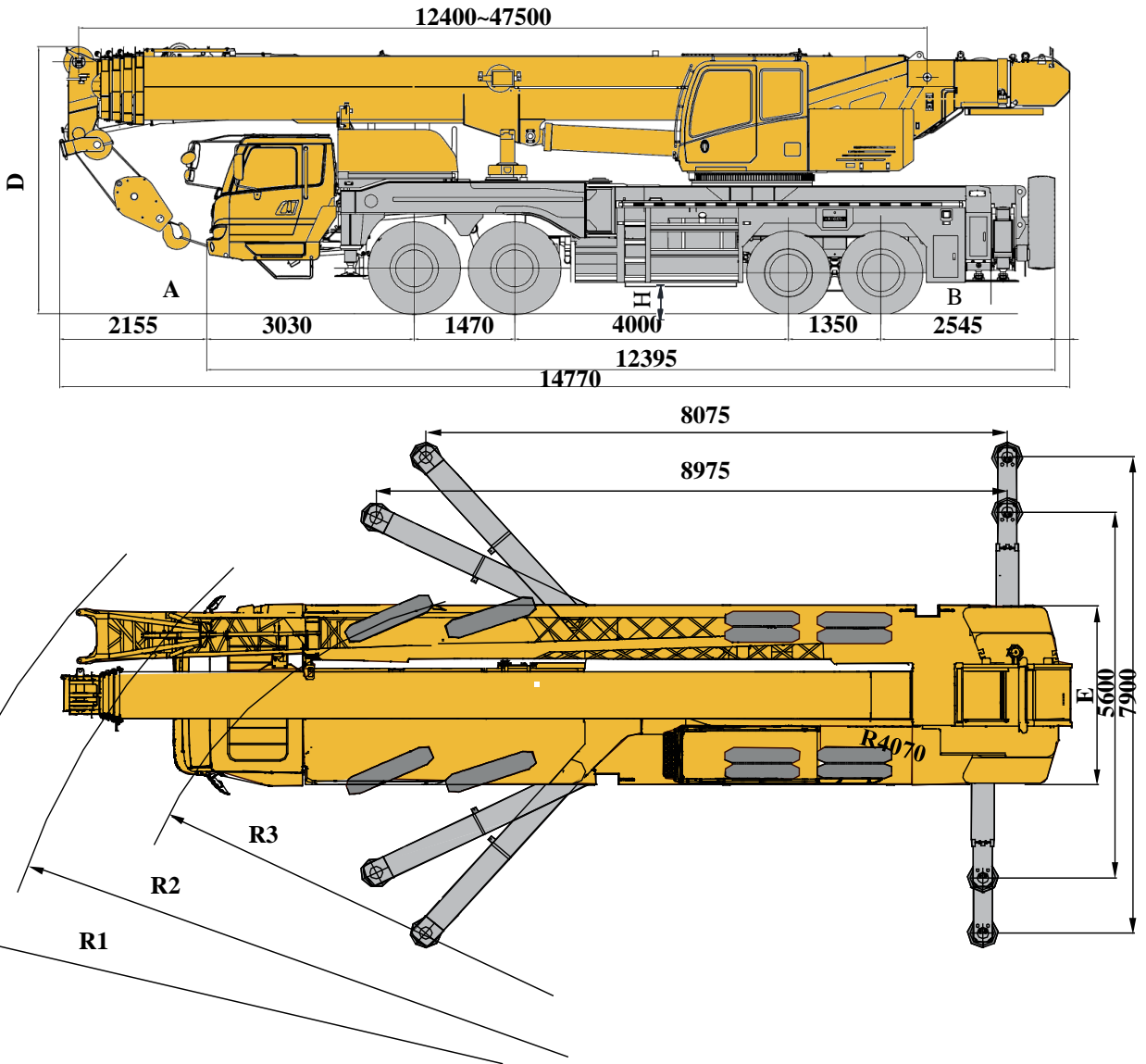


目录

Contents

目录	
Contents	
尺寸参数 Dimensions	4
技术规格 Technical specifications	5-8
重量/作业速度 Weight / Working speeds	9
平衡重 Counterweight	10
臂架组合方案 Boom / Jib combinations	11
臂架组合方案 Boom / Jib combinations	12
工作范围及起重能力 Working ranges and lifting capacities	
主臂 Boom	13-14
副臂 Jib	15-16
符号标识 Description of symbols	17
注意事项 Notes	18
主要技术参数表 Main Technical Data	20

尺寸参数 Dimensions




	A	B	D	E	R1	R2	R3	H
385/95 R 25 (14.00 R 25)	17°	15.5°	3795	2800	15500	15000	12000	302

技术规格


Technical specifications

	底盘
车架	徐工设计、制造，全覆盖式走台板，防扭转箱型结构，高强度钢材制造。
支腿	4支腿，前摆腿后水平支腿结构，水平伸缩和垂直伸缩由液压控制，底盘两侧装有电控操纵控制台，控制台板装有水平仪、照明灯和调速按钮，支腿油缸均设有单向阀，且垂直支腿带有双向液压锁。 支脚盘尺寸：φ450mm 最大起重量时支腿反力：739kN
发动机	MC11.40-50/WP12.375E50，直列六缸水冷电控柴油发动机，重汽曼/潍柴制造，额定功率297kW/1900rpm/276kW/1900rpm，最大扭矩1900Nm/1000-1400rpm/1800Nm/1000-1400rpm，国V排放标准。 燃油箱容积：350L。
变速箱	伊顿机械式变速箱，10个前进档，2个倒档。
车桥	1,2桥转向，3,4桥驱动。
悬挂	前悬架采用钢板弹簧悬架，后悬架采用橡胶悬架。
轮胎	12个轮胎，1个备胎 轮胎规格： 前桥385/95R25（14.00R25） 后桥12.00R24
制动	行车制动：双回路气压制动，作用于所有车轮。 驻车制动：弹簧储能制动，作用于2,3,4轴车轮。 辅助制动：发动机排气制动和缓速制动。
转向	1、2桥机械转向+液压助力
驾驶室	新型复合结构驾驶室，全封闭、装备豪华舒适。性能上：优越的密封性和防腐蚀、防震设计；配置大视野的前挡风安全玻璃、后视镜，电控洗涤器，电子门窗升降器，带有除霜风挡的室内空气加热器，冷暖空调，收音机等。主驾采用空气悬浮座椅副驾采用简易卧铺等。2公斤灭火器 标配冷暖空调。
电气系统	直流24伏特，串联12伏特的电池组2个。 发电机 28伏特-80安培。

	上车
结构	徐工设计、制造，高强度钢材制造。
液压系统	底盘发动机驱动四联泵，主泵为变量泵用于起升、变幅、伸缩。回转、空调和先导控制由齿轮泵驱动；负载敏感式比例多路换向阀；风冷式液压油散热器； 液压油箱容积：1200L
操纵方式	液控先导操纵系统，由左右2个操纵手柄控制，主操纵阀为负载敏感控制多路换向阀
主起升机构	液压控制调速，装有双折线绳槽卷筒，由液压马达通过行星齿轮减速器驱动，内置常闭式制动器并带有平衡阀；
副起升机构	液压控制调速，装有双折线绳槽卷筒，由液压马达通过行星齿轮减速器驱动，内置常闭式制动器并带有平衡阀；
回转机构	三排滚柱式回转支承联结上车与底盘，可连续回转360°，回转支承滚柱轨道密封可防水防尘。低速大扭矩定量马达，行星齿轮减速，内置常闭式制动器，可无级调速。
变幅机构	单支双作用前置液压变幅油缸
操纵室	新型钢制操纵室，装有无视野死角的前景窗，安全玻璃，车窗装有遮阳板，推拉式车门，座椅靠背可倾斜定位，操纵杆安装在座椅两侧的扶手台上；带推拉踏板；前窗顶窗装有雨刮器；标配冷暖空调；2公斤灭火器
安全装置	液压平衡阀；液压溢流阀；液压双向锁；力矩限制器；三圈保护器，防止钢丝绳过放；臂头设置高度限位，防止钢丝绳过卷；三色报警灯；上车水平仪；卷扬监视器；支腿压力检测
组合配重	标配11.5t，有2.2t、1.3t、3.5t、4.5t，共有2.2t、3.5t、8t、11.5t共4种组合方式。

技术规格

Technical specifications

	上车
主臂	5节，“U”形截面的筒形焊接结构。双缸绳排伸缩机构 主臂长度：12.4m~47.5m。
副臂	单滑轮，安装在主臂顶端用于单股钢丝绳起重作业，起重性能对应主、副臂工况的性能，不能超过6.3吨
臂端单滑轮	桁架式焊接结构，具有0°、15°、30°三种固定副臂安装角 固定副臂长度：10.5m/17.5m

选装配置

安全装置	风速仪；
发动机配置 (国三)	WP12.375N潍柴发动机、额定功率276kW/1900rpm、最大扭矩1800Nm/(1000-1400rpm)、国III排放标准。 MC11.39-30重汽发动机，额定功率290kW/1900rpm、最大扭矩1900Nm/(1000-1400rpm)、国III排放标准。
平衡重	倒车影像

产品各部件明细如上所述，具体部件明细请参照产品报价单

技术规格

Technical specifications



Chassis

Frame	Designed and manufactured by XCMG, with all covered walking surface, anti-torsion box structure and optimal load-bearing structure design, made of imported high strength steel.
Outrigger	4 outriggers, K-shaped arrangement, lateral and vertical outrigger controlled by the hydraulic control. Both sides of the chassis equipped with electronic control console, the console installed with luminous level, lighting and speed buttons; outrigger cylinders equipped with one-way valve, and the vertical outrigger has two-way hydraulic lock. Float dimension: $\phi 450\text{mm}$ Reaction force of outrigger at max. lifting load: 739KN
Engine	MC11.40-50/WP12.375E50, in-line six-cylinder water-cooled EFI diesel engine, manufactured by MC/WEICHAI POWER, rated power 297kW/1900rpm/276kW/1900rpm, max. torque 1900Nm/1000-1400rpm/1800Nm/1000-1400rpm, the national V emission standards. Fuel tank capacity: 350L
Gearbox	Mechanical transmission, made by EATON, manual flexible shaft control, 10-forward speed and 2-reverse speed.
Axles	Four-axle chassis, 1&2 axles steering, 3&4 axles driving.
Suspension	Front suspension is steel spring, rear suspension is rubber spring.
Tires	12 tires and 1 spare tire, 1&2 axles are equipped with single tire, 3&4 axles are equipped with double tire. Tire specifications: Front: 385/95R25 (14.00R25) Rear: 12.00R24
Brakes	Service braking: foot pedal operated double-circuit air pressure brake. The first circuit acts on the wheels of axles 1 and 2; the second circuit acts on the wheels of axles 3 and 4. Parking brake: air-release brake, acting on the 2nd, 3rd and 4th axles, it works through the spring-loaded air chamber on each axle. Auxiliary brake: engine exhaust brake and engine retarder brake.
Steering	1&2 axles steering, mechanical steer with hydraulic assist
Cab	New enclosed cab, luxury and comfort. It is designed to be leakproof, anti-corrosive and shockproof. It is equipped with a windshield offering outstanding visibility, rear mirrors, electric control washer, electronic lifters of doors and windows, indoor air humidifier with windscreen defroster, air conditioner, radio cassette player, etc.
Electric	24V DC, negative ground, 2 batteries.



Superstructure

Frame	Designed and manufactured by XCMG; made of high-strength steel
Hydraulic system	Quadruple pump driven by chassis engine, the variable pump as main pump is used to control hoisting, elevating and telescoping operations. The gear pump is used to control slewing operation as well as for air conditioner and pilot control. Load sensitive proportional multi-way change valve, Air-cooled hydraulic oil radiator; Volume of hydraulic oil tank: 1200L
Operating mode	Hydraulic pilot control of all crane movements using two control levers. Main control valve is load-sensitive control multi-way change valve.
Main winch system	Hydraulic controlled speed regulation, groove drum is equipped, driven by hydraulic motor through planetary gear reducer, and built-in normally closed brake and counterbalance valve are available.
Auxiliary winch system	Hydraulic controlled speed regulation, groove drum is equipped, driven by hydraulic motor through planetary gear reducer, and built-in normally closed brake and counterbalance valve are available.
Slewing system	Three-row roller slewing ring for connecting superstructure with chassis may continuously slew 360°. Slewing ring track is water-proof and dust-proof. A constant displacement motor with low speed and large torque, a planetary gear slewing reducer and a built-in normally closed brake are equipped. The slewing speed may be infinitely regulated.
Elevating System	Single-supported double acting front-mounted hydraulic elevating cylinder, with balance valve equipped.
Operator's cab	New fully-enclosed steel tiltable cab with a full-view front window. Safety glass and sun shield are used for windows. Wipers are fitted for the windshield and roof window. The cab features a new ergonomic seat design with backrest adjustment and armrests with joysticks fitted. A sliding door and a pull-out step are available. Heater and Air conditioner are available. Fire extinguisher 2kg
Safety devices	Hydraulic balance valve; Hydraulic relief valve; Double-way hydraulic valve; LMI; spring aligning device for joystick; Lowering limiter for preventing wire rope from over-releasing; Anti-two block at boom head for preventing wire rope from over-winding; tri-color warning lamp. level gauge, Winch monitor, outrigger pressure detection.

技术规格

Technical specifications



Boom system

Boom	5-section, U-shape cross section, welding structure. Boom length:12.4m ~ 47.5m.
Single top	Fitted at boom head, used for single line operation. Its lifting performance is the same as that for boom and jib, but could not exceed 6.3t.
Jib	2-section, Lattice jib, welded structure. Three offset angles of 0° , 15° and 30° . Fixed jib length: 10.5m/17.5m

Additional equipment

Safety devices Anemometer

Engine WP12.375N, rated power 276kW /1900rpm, max. torque 1800Nm/1000-1400rpm, the national III emission standards.

MC11.39-30, rated power 290kW /1900rpm, max. torque 1900Nm/1000-1400rpm, the national III emission standards.

Electrical system Reversing camera

Product parts list is as mentioned above, please refer to the product quotation for specific parts.

重量 Weight



车桥 Axle	1	2	3	4	总重量 Total weight
t	12	12	13	13	50

1) 车架中间放置1.3吨活动平衡重，中长钩固定在驾驶室前方，其余吊钩不带；




2) The 1.5 ton Counterweight should be put on the chassis deck, not taking any other counterweight and rearview mirror; The main block should be fastened in front of the chassis cab, and not taking any other blocks.








吊钩 Hook	倍率 No. of lines	吊钩重量 Weight kg	吊钩尺寸 Dimensions mm	备注 Remarks
80t	12	994	1735×554×520	双钩 Double hook , 标配 Standard
40t	6	560	1600×520×370	单钩 Single hook , 标配 Standard
7t	1	251	717×370×370	单钩 Single hook , 标配 Standard

作业速度 Working speeds

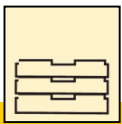
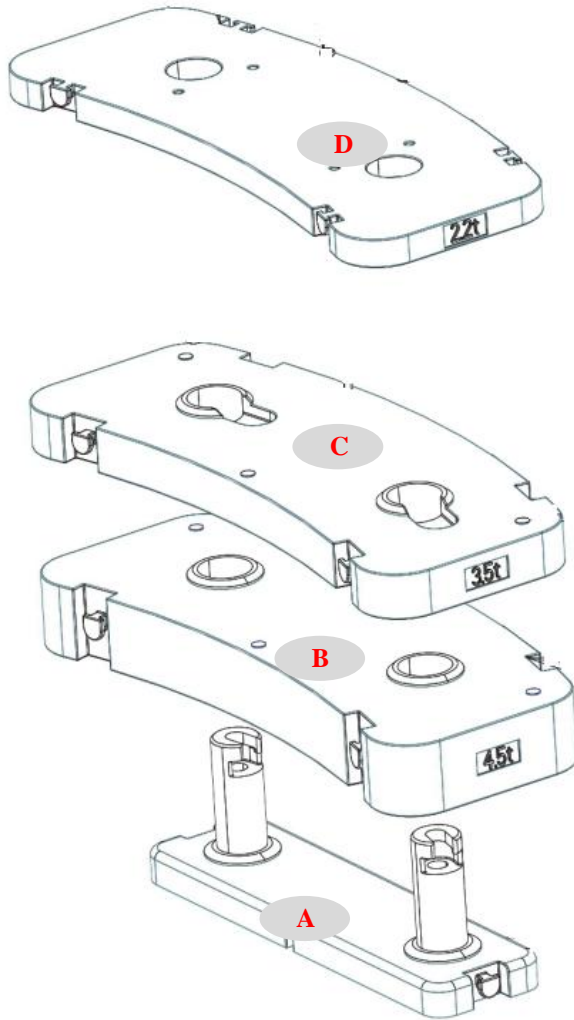


		
12.00R24	1 ~ 80	40%



作业机构 Drive	作业速度 Working speed	最大单绳拉力 Max. single line pull	钢丝绳直径/长度 Rope diameter/ length
	0-130 m/min, 单绳, 第四层 m/min, single line, 4th layer	83kN	20 mm/235m
	0-110 m/min, 单绳, 第四层 m/min, single line, 4th layer	58.6 kN	20 mm/145 m
	0-1.9 r/min		
	从-1°抬起至79°约70s Approx. 70s for boom elevation from -1° to 79°		
	从12.4m伸出至47.5m约150s Approx. 150s for boom extension from 12.4m to 47.5m		

平衡重 Counterweight



平衡重 Counterweight	A	B	C	D
尺寸 (长×宽×高) m Size (L×W×H) m	560×2100×659	1490×2700×322	1490×2700×203	1490×2700×127
重量 t Weight t	1.3	4.5	3.5	2.2

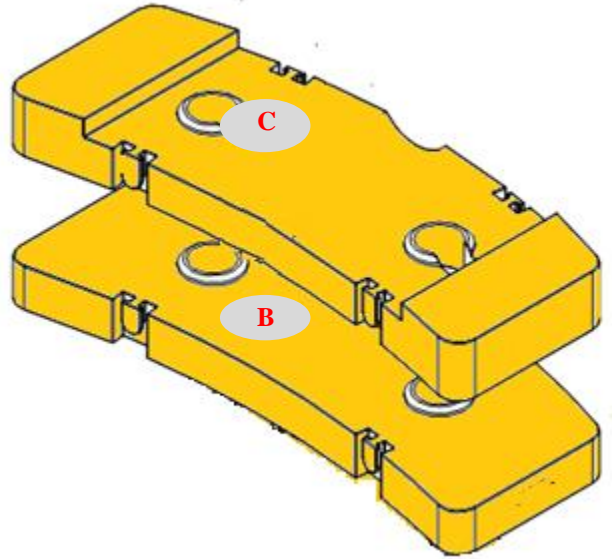
工况模式 Working mode	11.5t	8t	3.5t	2.2t
组合形式 Combinations	A+B+C+D	A+B+D	A+D	D

运输部件尺寸

Transportation components dimension

平衡重 8t
Counterweight 8t

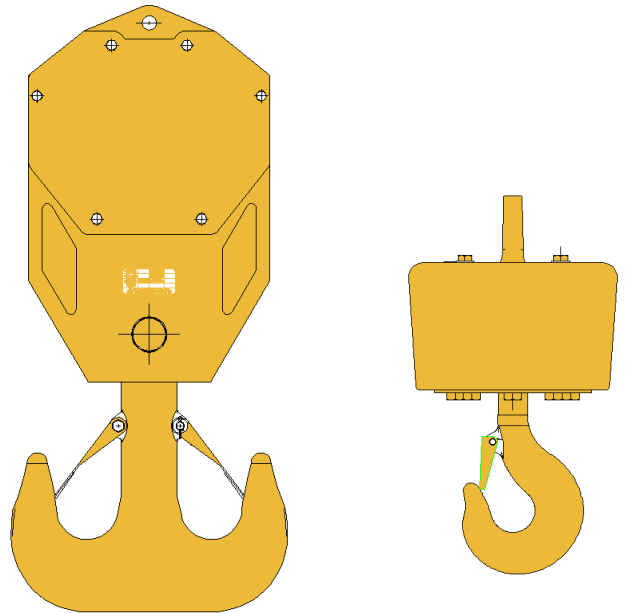
平衡重B : 4.5t	平衡重C: 3.5t
2750×1126×621	2750×1126×267
单位(Unit) : mm	



80吨主钩 994kg+7吨副钩
80 ton hook block 994 kg+ 7ton hook block

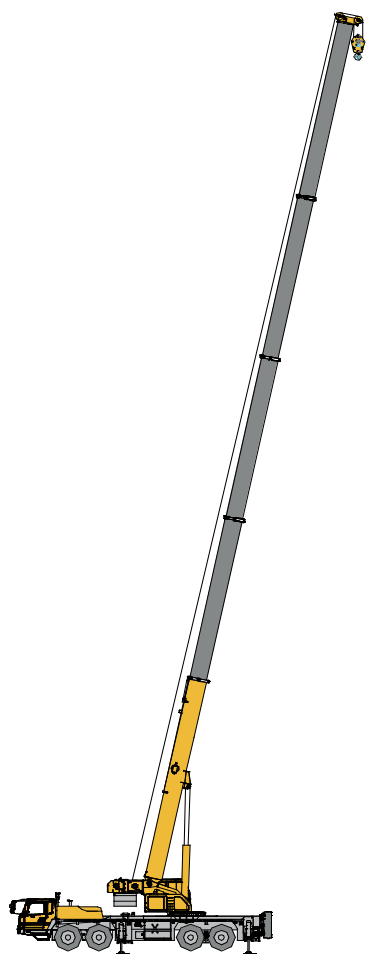
80吨吊钩	7吨吊钩
710×603×1784	426×426×740
单位(Unit) : mm	

80吨主钩



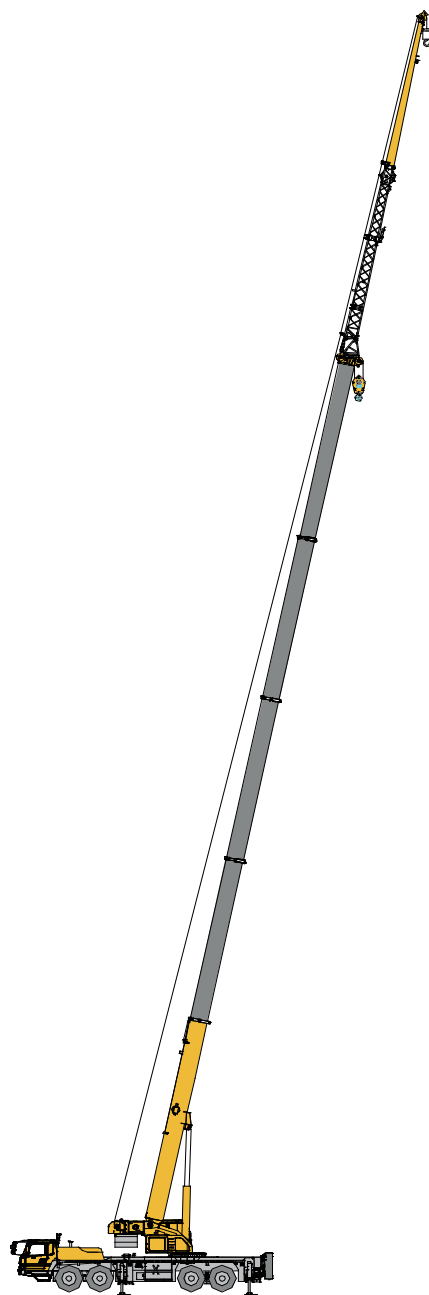
臂架组合方案

Boom / Jib combinations



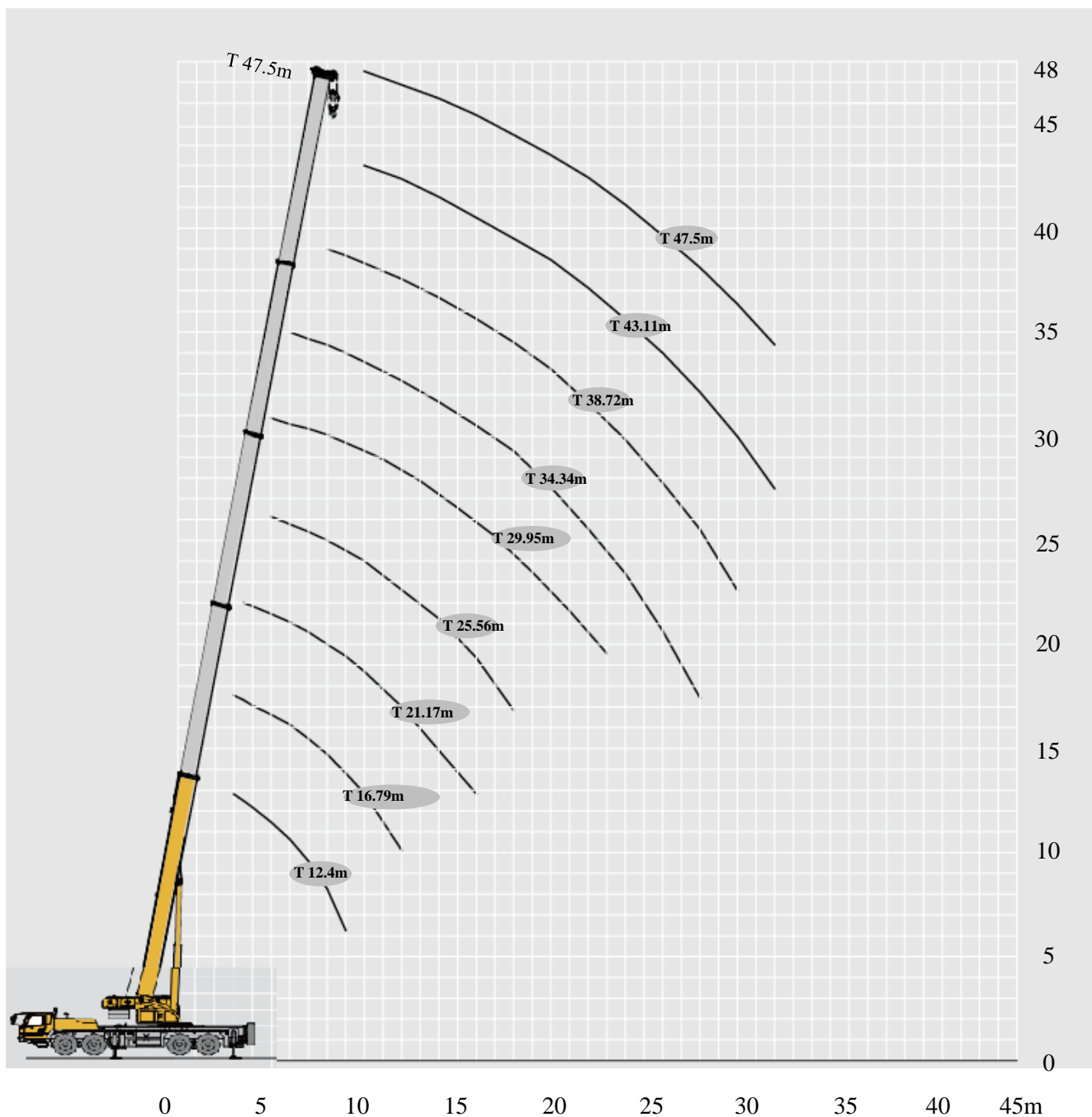
主臂
Telescopic boom

T : 12.4~47.5m



副臂
Jib


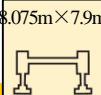

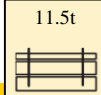

T : 12.2~47.5m
J : 10.5m/17.5m



起重性能表

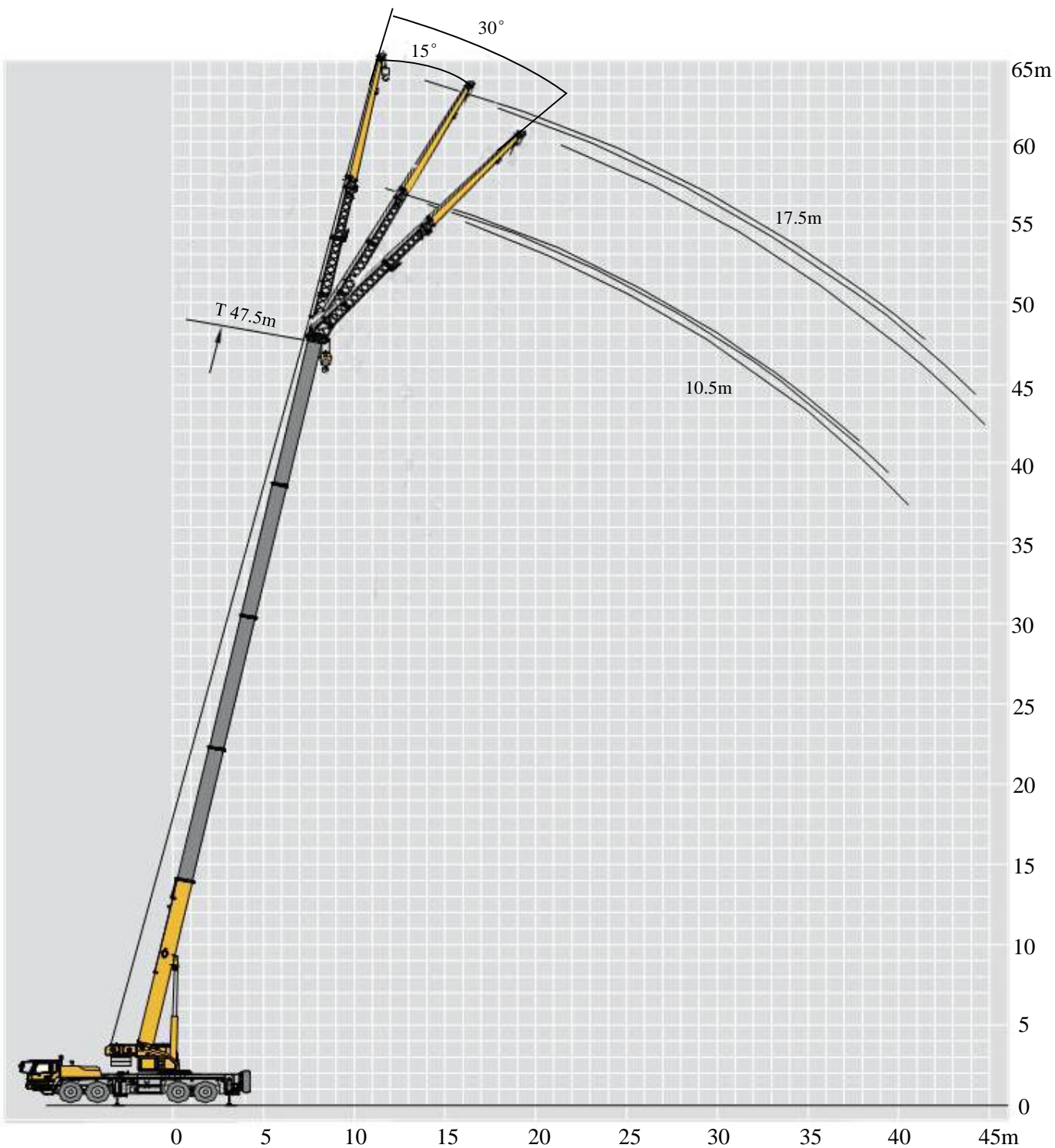
Lifting capacities

T 11.85~55m

	 12.4-47.5m	 8.075m×7.9m	 360°	 11.5t							
	12.4m	16.79m	21.17m	25.56m	29.95m	34.34m	38.72m	43.11m	47.5m		
3	80	65								3	
3.5	75	63	45							3.5	
4	68	61	45							4	
5	58	54	43	38	32					5	
6	51	47	38	35	30	24.5				6	
7	43.5	42	34.5	32	28	22.5				7	
8	37	36.8	31.6	28	25.5	20	17.9			8	
9	30.5	29.9	28.2	26.5	23.8	18.9	16.9			9	
10		24.3	24	23.7	21.8	17.7	15.7	13.4	12.5	10	
12		17.1	16.9	17.9	18.6	16.6	14.9	13	11	12	
14			12.4	13.3	14	14.5	12.7	11	10	14	
16			9.3	10.3	10.9	11.4	11	9.5	9	16	
18				8	8.7	9.1	9.5	8.4	8	18	
20					7	7.4	7.7	7.3	7.2	20	
22					5.6	6	6.2	6.4	6.4	22	
24						5	5.2	5.3	5.4	24	
26						4.1	4.3	4.5	4.7	26	
28						3.2	3.4	3.7	3.9	28	
30							2.9	3.1	3.3	30	
32								2.6	2.8	32	
34								2.1	2.3	34	
36									1.8	36	

起升高度曲线图 Lifting heights



副臂
Jib





起重性能表

J 10.5m/17.5 m

Lifting capacities

 主臂仰角 Boom angle (°)	47.5m	10.5m	8.075m×7.9m	360°	11.5t	 主臂仰角 Boom angle (°)	
	0° 安装角 Jib offset angle 0°			15° 安装角 Jib offset angle 15°			30° 安装角 Jib offset angle 30°
78	6.3			4.4		4.2	78
75	5.8			4		3.7	75
72	5.1			3.7		3.5	72
70	4.7			3.5		3.4	70
65	3.9			3.2		3	65
60	2.8			2.6		2.5	60
55	2.1			1.9		1.8	55
50	1.2			1.1		1.1	50

 主臂仰角 Boom angle (°)	47.5m	17.5m	8.075m×7.9m	360°	11.5t	 主臂仰角 Boom angle (°)	
	0° 安装角 Jib offset angle 0°			15° 安装角 Jib offset angle 15°			30° 安装角 Jib offset angle 30°
78	3.7			2		1.6	78
75	3.2			1.6		1.4	75
72	2.7			1.4		1.3	72
70	2.5			1.3		1.3	70
65	1.9			1.2		1.1	65
60	1.7			1.1		1.1	60
55	1.4			1		0.9	55
50	1.1						50

符号标识

Description of symbols

	上车 Superstructure		底盘 Chassis
	起重能力 lifting capacity		车桥 Axle
	吊臂长度 Boom length		行驶速度 Driving speed
	工作幅度 Radius		爬坡能力 Gradability
	吊臂仰角 Boom position		轮胎 Tyres
	主臂起升高度 Hoist height with Boom		支腿 Outriggers
	固定副臂长度 Fixed jib length		吊钩 Hook block
	副臂安装角 Jib offset angle		平衡重 Counterweight
	副臂起升高度 Hoist height with jib		卷扬 Winch
	独立臂头 Independent jib head		360°全回转 360° rotation

注意事项

Notes

1. 本手册仅供参考，所有信息均仅供说明，不应依赖它去操作起重机，起重机的正确操作说明请参见操作手册和额定起重量手册
2. 表中所列起重量单位均为公吨（t），是当前臂长及幅度下，起重机在稳固、水平表面上能够保证的最大总起重量，包括吊钩和吊具的重量，吊重时必须减去上述装置的重量。
3. 表中的工作幅度为起吊重物离地时起重物到起重机回转轴线的水平距离。
4. 应按主臂仰角范围作业，即使是空载，也不应使主臂仰角处于范围外。
5. 只允许在5级（瞬时风速14.1m/s，风压125N/m²）风以下进行作业。

1. The manual is intended as reference only. See Operation Manual and Rated Lifting Load Manual for correct operation instructions.
2. The total rated loads given in the rated load charts are the maximum lifting capacity (in t) under corresponding boom length and radius when the crane is set up on firm and level ground, which includes the weight of the hook block and slings. The weight of above-mentioned devices should be deducted from the rated lifting load.
3. The working radius shown in the rated load charts is the horizontal distance between the load and slewing axis of crane when the load is lifted off the ground.
4. Observe the boom angle limit. Never operate the crane with the boom angle beyond the recommended limit even if a load is not being carried.
5. A lifting operation is permissible only when the wind force is below grade 5 (instantaneous wind speed is 14.1 m/s, wind pressure is 125 N/m²).

主要技术参数

Main Technical Data

类别 Category	项目 Item	单位 Unit	参数 Parameter		
尺寸参数 Dimensions	外形尺寸 (长×宽×高) Outline size (length× width× height)	mm	14770×2800×3890		
	轴距 Wheel base	mm	1470+4000+1350		
	轮距 (前/后) Track (Front/ Rear)	mm	2380/2075		
	前悬/后悬 Front/ Rear overhang	mm	3030/2545		
	前伸/后伸 Front/ Rear extension	mm	2155/220		
重量参数 Weight	最大允许总质量 Total vehicle mass in travel configuration	kg	50000		
	轴荷 Axle load	一轴 1st axle	kg	12000	
		二轴 2nd axle	kg	12000	
		三轴 3rd axle	kg	13000	
		四轴 4th axle	kg	13000	
动力参数 Power	发动机型号 Engine model	—	MC11.40-50	WP12.375E50	
	额定功率/转速 Engine rated power/rpm	kW/(r/min)	297/1900	276/1900	
	最大净功率/转速 Max. net power/rpm	kW/(r/min)	294/1900	271/1900	
	最大输出扭矩/转速 Engine rated torque/rpm	N.m/(r/min)	1900/1000-1400	1800/1000-1400	
行驶参数 Travel	最高车速 Max. travel speed	km/h	≥80		
	最低稳定车速 Min. travel speed	km/h	2~3		
	最小转弯直径 Min. turning diameter	m	≤24		
	臂头最小转弯直径 Min. turning diameter at boom tip	m	≤30		
	最小离地间隙 Min. ground clearance	mm	371		
	接近角 Approach angle	°	10		
	离去角 Departure angle	°	15.5		
	制动距离 (制动初速度为30km/h) Braking distance (at 30 km/h)	m	≤10		
	最大爬坡能力 Max. grade ability	%	40		
	百公里油耗 Fuel consumption per 100 km	L	45		
噪音 Noise	加速行驶机外噪声 Exterior noise level	dB(A)	≤84		
	驾驶员耳旁噪声 Noise level at seated position	dB(A)	≤90		

主要技术参数

Main Technical Data

类别 Category	项目 Item		单位 Unit	参数 Parameter	
主要性能参数 Main performance	最大额定总起重量 Max. total rated lifting capacity		t	80	
	最小额定工作幅度 Min. rated working radius		m	3.0	
	转台尾部回转半径 Turning radius at turntable tail	平衡重处 Counterweight	mm	4670	
		副卷处 Auxiliary winch	mm	4220	
	最大起重力矩 Max. load moment	基本臂 Base boom	kN.m	3060	
		最长主臂 Fully-extended boom	kN.m	1392	
	支腿跨距 Outrigger span	纵向 Longitudinal	m	8.075 (8.975)	
		横向 Lateral	m	7.90 (5.6)	
	起升高度 Hoist height	基本臂 Base boom	m	12.8	
		最长主臂 Fully-extended boom	m	47.5	
		最长主臂+副臂 Fully-extended boom + Jib	m	64.0	
	起重臂长度 Boom length	基本臂 Base boom	m	12.4	
		最长主臂 Fully-extended boom	m	47.5	
		最长主臂+副臂 Fully-extended boom + Jib	m	65	
副臂安装角 Jib offset angle		°	0、15、30		
工作速度参数 Working speed	起重臂起臂时间 Boom raising time		s	70	
	起重臂全伸时间 Boom fully extended time		s	150	
	最大回转速度 Max. slewing speed		r/min	2.0	
	支腿收放时间 Outrigger extending and retracting time	水平支腿 Outrigger beam	收 Retracting	s	40
			放 Extending	s	50
		垂直支腿 Outrigger jack	收 Retracting	s	45
			放 Extending	s	50
起升速度 (单绳, 第四层, 空载) Hoisting speed (single line, 4th layer, no load)	主起升机构 Main winch	m/min	130		
	副起升机构 Auxiliary winch	m/min	110		
噪声 Noise	机外辐射 Exterior noise level		dB (A)	122	
	司机位置处 Noise level at seated position		dB (A)	90	



地址：江苏省徐州市经济技术开发区高新路68号

Add : No. 68, Gaoxin Road, Economic Development
Zone, Xuzhou, Jiangsu Province, China

电话(Tel) : +86-516-83462242/83462350

质量监督电话(Quality Inquiry Tel) : +86-516-87888268

备件电话(Spare Parts Tel) : +86-516-83461542

邮编(Post Code) : 221004

网址(Web) : www.xcmg.com/qizhongji

服务热线 Service Tel

400-110-9999

400-001-5678



本印刷品不属于合同。出于产品不断改进的需要，我们保留对产品型号、参数、配置进行变更的权利，恕不另行通知。图片仅供参考，具体产品以实物为准。图片中产品可能并非标准配置，部分部件可能需要另行购置。办理牌照和上路行驶需遵守当地法规。

This print does not belong to the contract. We reserve the right to modify the design (such as product model, parameters and configuration) without notice for improvement. The pictures are just for reference. The product in the picture may not be standard configuration. Some parts need to be purchased separately. Conform to the local laws for license application and road traveling.

XCMG—XCT80