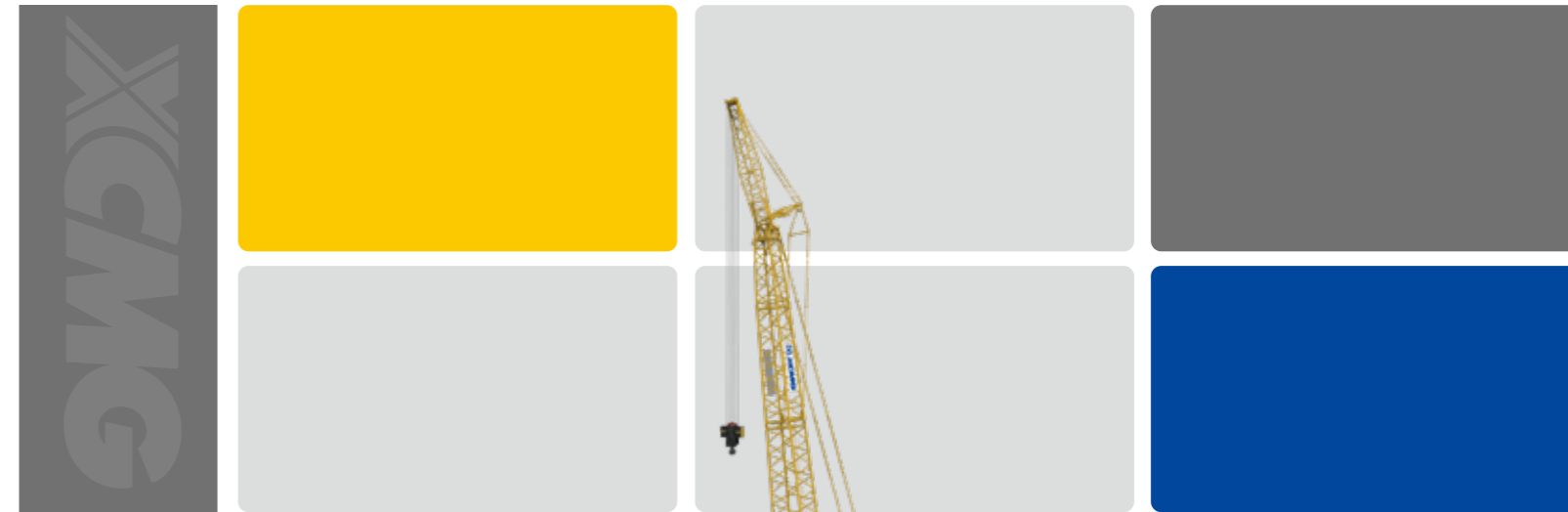


徐工徐工 助您成功
XCMG FOR YOUR SUCCESS



XGC11000 履带起重机

CRAWLER CRANE



地址(Add): 中国江苏省徐州市金山桥经济开发区桃山路19号 邮编(Postal Code): 221004
No.19 Taoshan Road, Economic development zone of jinshanqiao, Xuzhou, Jiangsu Province, China
统一服务热线(Unified service hotline): 86 400-110-9999

销售热线Sales Hotline	服务热线Service Hotline
销售电话(Sale Tel): 86 0516-87892094	服务电话(Service Tel): 86 400-001-5678
销售传真(Sale Fax): 86 0516-87892074	服务传真(Service Fax): 86 0516-87892080
电子邮件(E-mail): jjyxd@xcmg.com	备件电话(Service Tel): 86 0516-87892086
服务质量投诉电话	备件传真(Service Fax): 86 0516-87892083
(Quality Supervision Tel): 86 0516-87892587	



欢迎访问徐工商城
省心更省钱一站式



欢迎关注徐工履带起重机官方微信
1. 直接扫码“XCMG_xgji”增加好友
2. 查找公众账号“徐工履带起重机”
3. 直接扫描上方二维码

—2021年01月版—

注: 出于产品不断改进的需要, 我们保留对产品型号、参数、配置进行变更的权力, 恕不另行通知。



CONTENTS

目录

P03	<ul style="list-style-type: none">• 产品亮点 Product Highlights• 安全保护措施 Safety Protection Devices
P15	<ul style="list-style-type: none">• 配套件明细表 Main Parts List• 主要技术参数 XGC11000 Crawler Crane Main Technical Specifications• 典型工况载荷表 Load charts of typical working conditions
P49	<ul style="list-style-type: none">• 运输方案 Transport plan• 运输尺寸 Transport size

02

XGC11000履带起重机 XGC11000 CRAWLER CRANE

<ul style="list-style-type: none">• 产品亮点 Product Highlights
<ul style="list-style-type: none">• 安全保护措施 Safety Protection Devices
<ul style="list-style-type: none">• 配套件明细表 Main Parts List
<ul style="list-style-type: none">• 主要技术参数 XGC11000 Crawler Crane Main Technical Specifications
<ul style="list-style-type: none">• 典型工况载荷表 Load charts of typical working conditions

产品的部件和系统描述 Parts and System Description

01 臂架组合方式 Boom Combinations

XGC11000履带起重机的臂架为高强度无缝钢管作为弦管和腹管，辅以高强度钢板分段焊接成中间等截面，两端变截面的四弦管空间桁架结构。

crawler crane boom sections are high strength seamless steel as main chords and web tubes, and assistant with high strength steel welded to be equal sections in the middle, and variant section at the both sides to form 4-chord special lattice structure.

(1) 标准工况 Standard working condition

- HB: 标准工况重型主臂，24~96米，10.5米主臂底节×1，6米中间节×2，12米中间节A×1，12米中间节B×2，12米中间节B-腰绳节×1，12米薄壁中间节C×1，12米锥节×1，1.5米臂头×1。

HB: standard working condition heavy duty boom, 24~96m, 10.5m boom butt×1, 6m insert section×2, 12m insert section A×1, 12m insert section B×2, 12m insert section B-center hitch×1, 12m thin wall insert section C×1, 12m tipper section ×1, 1.5m boom head ×1.

- LB: 标准工况轻型主臂，66~108米，10.5米主臂底节×1，12米主臂中间节B×2，12米中间节B-腰绳节×1，12米锥节×1，12米塔臂中间节A×1，6米塔臂中间节×2，12米塔臂中间节B×2，7.5米塔式副臂顶节×1。

LB: standard working condition light duty boom, 66~108m, 10.5m boom butt×1, 12m boom insert B×2, 12m insert B-center hitch×1, 12m tipper section×1, 12m tower jib section A×1, 6m tower jib section ×2, 12m tower jib section B×2, 7.5m tower jib top section ×1.

- WJ: 标准工况塔臂，主臂长度为30~66米时可安装塔式副臂24~84米，4.5米塔式副臂底节×1，6米塔式副臂中间节×2，12米塔式副臂厚壁中间节A×1，12米塔式副臂厚壁中间节B×2，12米塔式副臂薄壁中间节C×2，7.5米塔式副臂顶节×1。

WJ: standard working condition tower jib, when boom length is 30~66m, tower jib 24~84m can be added, 4.5m tower jib butt×1, 6m tower jib insert section×2, 12m tower jib thick wall insert section A×1, 12m tower jib thick wall insert section B×2, 12m tower jib thin wall insert section C×2, 7.5m tower jib top section ×1.

- HJ-S3: 标准工况风电副臂，主臂长度为78~102米时可安装风电副臂，组成：10.5米主臂底节×1，12米过渡节I(增强型)×1，12米中间节(增强型)×1，12米过渡节II(增强型)×1，3米中间节×1，6米中间节×1，12米中间节A×1，12米中间节B-腰绳节×1，12米锥节×1，12米塔臂厚壁中间节A×1，7.5米塔臂臂头×1，12米风电副臂总成×1。

HJ-S3: standard working condition wind power jib, when boom length is 78~102m, wind power jib can be added. 10.5m boom butt×1, 12m transition section I (strengthened) ×1, 12m insert section (strengthened) ×1, 12m transition section II (strengthened) ×1, 3m insert section×1, 6m insert section×1, 12m insert section A×1, 12m boom insert section B×2, 12m boom center hitch section B×1, 12m tipper section ×1, 12m tower jib thick wall insert section A×1, 7.5m tower jib top section×1. Wind power jib is 12m×1.

(2) 超起工况 SL working condition

- SHB-S7 超起工况重型主臂：主臂可选长度36~114米，组成：10.5米主臂底节×1，12米过渡节I(增强型)×1，12米重型节(增强型)×1，12米中间节(增强型)×4，12米过渡节II(增强型)×1，6米中间节×1，12米中间节A×1，12米锥节×1，1.5米主臂臂头×1。

SHB-S7 SL working condition heavy duty boom : optional boom length is 36 ~ 114m , its composition: 10.5m boom butt×1, 12m transition section I (strengthened) ×1, 12m heavy duty section (strengthened) ×1, 12m insert section (strengthened) ×4, 12m transition section II (strengthened) ×1, 6m insert section ×1, 12m tipper section ×1, 1.5m boom head ×1.

- SLB-S7 超起工况轻型主臂：主臂可选长度为114~147米，组成：10.5米主臂底节×1，12米过渡节I(增强型)×1，12米重型节(增强型)×1，12米中间节(增强型)×4，12米过渡节II(增强型)×1，3米中间节×1，6米中间节×1，12米中间节A×1，12米中间节B-腰绳节×1，12米锥节×1，7.5米塔臂臂头×1。

SLB-S7 SL working condition light duty boom : optional boom length is 114~147m, its composition: 10.5m boom butt×1, 12m transition section I (strengthened) ×1, 12m heavy duty boom (strengthened) ×1, 12m insert section (strengthened) ×4, 12m transition section II (strengthened) ×1, 3m insert section ×1, 6m insert section ×1, 12m insert section A×1, 12m insert section B-center hitch ×1, 12m tipper section ×1, 7.5m tower jib head ×1.

- SLB-TS4 超起工况轻型主臂：主臂可选长度为126~165米，组成：10.5米主臂底节×1，3米连接节I×1，10.5米大截面臂节I×2，轻型大截面臂节II×2，3米连接节II×1，12米中间节(增强型)×4，12米过渡节II(增强型)×1，3米中间节×1，6米中间节×1，12米中间节A×1，12米锥节×1，7.5米塔臂臂头×1。

SLB-TS4 SL working condition light duty boom: optional boom length is 126~165m, its composition: 10.5m boom butt ×1, 3m connection section I ×1, 10.5m larger cross section boom I×2, light duty larger cross section boom II ×2, 3m connection section II×1, 12m insert section (strengthened) ×4, 12m transition section II (strengthened) ×1, 3m insert section ×1, 6m insert section ×1, 12m insert section A×1, 12m tipper section ×1, 7.5m tower jib head ×1.

- SWJ-S7 超起工况塔臂：主臂可选长度为48~108米，可安装塔式副臂24~96米，4.5米塔式副臂底节×1，6米塔式副臂中间节×2，12米塔式副臂厚壁中间节A×1，12米塔式副臂中间节B×2，12米塔式副臂薄壁中间节C×3，7.5米塔式副臂顶节×1。

SWJ-S7 SL working condition tower jib: when boom length is 48 ~ 108m , tower jib 24~96m can be added, 4.5m jib butt ×1, 6m tower jib insert section ×2, 12m tower jib thick wall insert section A×1, 12m tower jib insert section B×2, 12m tower jib thin wall insert section C×3, 7.5m tower jib top section ×1.

产品亮点 Product Highlights

- SHJ-S7 超起工况风电副臂：主臂可选长度 96~147米,风电副臂12米, 组成：10.5米主臂底节×1, 12米过渡节 I (增强型) ×1, 12米重型节(增强型) ×1, 12米中间节(增强型) ×4, 12米过渡节II(增强型) ×1, 3米中间节×1, 6米中间节×1 12米中间节A×1, 12米中间节B-腰绳节×1, 12米锥节×1, 7.5米塔臂臂头×1, 12米风电副臂总成×1。

SHJ-S7 SL working condition wind power jib: optional boom length is 96~147 m, wind power jib 12m, its composition: 10.5m boom butt×1,12m transition section I (strengthened)×1 12m heavy duty section (strengthened) × 1, 12m insert section (strengthened) × 4, 12m transition section II (strengthened) × 1, 3m insert section × 1, 6m insert section × 1, 12m insert section A×1, 12m insert section B-center hitch×1, 12m tipper section × 1, 7.5m tower jib head×1, 12m wind power jib assembly ×1.

- SHJ-S9 超起工况风电副臂：主臂可选长度 96~168米,风电副臂12米, 组成：10.5米主臂底节×1, 12米过渡节 I (增强型) ×1, 12米重型节(增强型) ×3, 12米中间节(增强型) ×4, 12米过渡节II(增强型) ×1, 3米中间节×1, 6米中间节×1, 12米中间节A×1, 12米中间节B-腰绳节×1, 12米锥节×1, 7.5米塔臂臂头×1, 12米风电副臂总成×1。

SHJ-S9 SL working condition wind power jib: optional boom length is 96~168m, wind power jib 12m, its composition: 10.5m boom butt × 1, 12m transition section I (strengthened), 12m heavy duty section (strengthened) ×1, 12m insert section (strengthened) ×1,12m transition section II (strengthened),3m insert section×1, 6m insert section×1, 12m insert section×1,12m boom center hitch section B×1, 12m tipper section ×1, 7.5m tower jib top section×1. Wind power jib is 12m×1.

- SHJ-TS4 超起工况风电副臂：主臂可选长度126~165米,风电副臂12米, 组成：10.5米主臂底节×1, 3米连接节I ×1, 10.5米大截面臂节I ×2, 轻型大截面臂节II ×2, 3米连接节II×1, 12米中间节(增强型) ×4, 12米过渡节II(增强型) ×1, 3米中间节×1, 6米中间节×1, 12米中间节A×1, 12米锥节×1, 7.5米塔臂臂头×1, 12米风电副臂总成×1。

SHJ-TS4 SL working condition wind power jib: optional boom length is 126~165m, wind power jib 12m, its composition: 10.5m boom butt × 1, 3m connection section I × 1, 10.5m large cross- section boom I ×2, light duty large cross-section boom II × 2, 3m connection section II×1, 12m insert section (strengthened) ×4, 12m transition section II (strengthened) ×1, 3m insert section ×1, 6m insert section ×1, 12m insert section A×1,12m tipper section ×1, 7.5m tower jib head×1, 12m wind power jib assembly ×1.

02 臂架变幅构件 Boom luffing components

- 采用高强度拉板结构, 由两组拉板构成。拉板由高强度一次切割成型, 安全系数高。拉板配有平衡梁, 能有效平衡两组拉板载荷, 使其受力均匀。

Boom luffing component is composed of two-group pendant, made of high-strength steel and one-time cutting; with high safety factor. Pendants are equipped with balance beam, effectively keep the two groups of pendants in balance state and even force bearing.

03 桅杆 Mast

- 标准型桅杆采用箱型结构, 超起型桅杆采用桁架式结构, 整体稳定性好。桅杆配置顶升机构, 超起桅杆配置液压自动控制防后倾机构。标准型桅杆还能作为临时吊臂, 实现履带架、主臂的自拆装。

Mast is box-type of twin limb structure, with additional beam between two limbs for good overall stability. Mast is equipped with raising device; SL mast is equipped with automatic backstop system. Standard type mast can be used as temporary boom to realize self-assembly/dismantling of crawler track and boom.

04 转台 Turntable

- 采用高强度的箱型结构, 在中间连有“工”字型和箱型横梁, 在回转中心附近布置有加强板。

Turntable is box type structure made of domestic high-strength steel plate, connected with “工” type and box type beam in the middle of it, and arranged with reinforced plate near the slewing center.

05 机构组成 Mechanism composition

本机的机构配置及用途如下表

Refer to the following table for the crane mechanism and its application.

序号 No.	机构名称 Mechanism	用途 Application	布置位置 Location
1	主起升机构 Main hoist winch	主臂、副臂、塔臂时起升作业 Boom, jib, tower jib lifting operation	转台 Turntable
2	副起升机构 Auxiliary hoist winch	主臂、副臂、塔臂时起升作业 Boom, jib, tower jib lifting operation	转台 Turntable
3	单滑轮机构 Single pulley hoisting mechanism	主臂、塔臂臂头单滑轮起升 Hoisting of single pulley of boom and tower jib head	主臂底节臂 Boom butt
4	主臂变幅机构 Main boom luffing mechanism	主臂变幅作业 Boom luffing operation	转台 Turntable
5	塔臂变幅机构 Tower jib luffing mechanism	塔臂变幅 Tower jib luffing	主臂底节臂 Boom butt
6	超起变幅机构 SL luffing mechanism	超起主臂变幅作业 SL boom luffing operation	超起桅杆底节 SL mast butt
7	回转机构 Slewing mechanism	上车回转 Superstructure slewing	转台 Turntable
8	行走机构 Travel mechanism	整机行走 Overall crane travel	履带梁 Crawler track
9	穿绳机构 Reeving mechanism	辅助穿绕钢丝绳 Wire rope reeving assistance	转台 Turntable

06 起升机构 Hoist winch

- 主副起升机构型号相同, 单独驱动, 大起重量时主副起升机构同步工作。起升机构采用片式常闭制动器, 内藏式减速机, 变量马达驱动。主副起升采用箱型支架, 销轴方式与转台连接。钢丝绳均为抗旋转钢丝绳。

Turntable is box type structure made of domestic high-strength steel plate, connected with “工” type and box type beam in the middle of it, and arranged with reinforced plate near the slewing center.

- 主起升机构, 钢丝绳直径φ28 mm;
Main hoist winch rope, rope diam.φ28 mm;
- 副起升机构, 钢丝绳直径φ28 mm;
Main hoist winch rope, rope diam.φ28 mm;

07 变幅机构 Boom luffing winch

- 主臂变幅机构采用双联卷筒形式。采用棘轮锁止装置，内藏式减速机，片式常闭制动器，钢丝绳直径 $\phi 28$ mm。
Boom luffing winch is a twin drum independent drive unit, with ratchet locking device, built-in speed reducer, and disc type constant closed brake. rope diam. $\phi 28$ mm.
- 超起变幅机构采用棘轮锁止装置，内藏式减速机，片式常闭制动器，钢丝绳直径 $\phi 28$ mm。
Super-lift luffing winch has ratchet locking device, built-in speed reducer, and disc type constant closed brake. rope diam. $\phi 28$ mm.

08 回转机构 Slewing gear

- 布置在转台前方，采用两个行星减速机，与回转支承外啮合，液压缓冲，具有自由滑转功能。采用片式常闭制动器，工作可靠，维修方便。
Slewing gear is arranged at front of turntable and made of two planetary reducers, external engagement with slewing bearing with hydraulic buffering device and sliding function, and controllable constant-closed disc brake for the function of free-swing. Reliable working and easy maintenance.

09 回转支承 Slewing ring

- 采用三排滚柱式外啮合回转支承，强度高、承载力矩大，维修、保养方便。
Slewing ring is 3-row roller type external meshed slewing ring, with high strength, heavy load bearing capacity, and easy for repair and maintenance.

10 油缸总成 Oil cylinder assy

- 臂架与转台的连接、车架与履带梁的连接均采用动力销连接方式，并配置了桅杆顶升油缸、履带梁自拆装油缸和支腿油缸。操纵室设有翻转油缸和旋转油缸。
Slewing ring is 3-row roller type external meshed slewing ring, with high strength, heavy load bearing capacity, and easy for repair and maintenance.

11 操纵室 Operator's cabin

- 操纵室采用仿生设计，视野宽阔，操作舒适、方便。
Operator's cabin is ergonomic design, wide vision, comfortable and convenient operation.
- 运输时可以将其转动 90° 放置在转台前方，减小运输宽度。
when the crane is in transport, the operator's cabin can be turned 90° to the front of turntable (boom base removed) so as to reduce transport width;

- 操纵室可上仰 20° ，便于观察高空作业。
when the crane is in operation, the operator's cabin can be tilted upward 20° for high level vision.

12 车架 Car-body

- 车架采用高强度钢板、箱型结构，中间设置横隔板，加强其抗扭刚度，结构简单，承载能力强，刚性好。
Car-body is made of high-strength steel and welded in box type structure, with cross panel installed in the middle to strengthen its stiffness against torsion, simple structure, high loading capacity and good rigidity.

13 履带行走装置 Track frame

- 包括履带梁和四轮一带。履带梁采用箱型结构，与车架连接部位局部加强，中间设置横隔板。
Crawler travel unit consists of track frame, track shoe, track roller, drive sprocket, idler roller and travel motor. Track frame is box-type structure, the connection place to frame is partially strengthened, with cross panel installed in the middle of it.
- 两个履带梁对称设置，装有宽度为1.5m的履带板，可同步操作，也可单独操纵，以实现直行和转弯。行走减速机驱动，采用内藏式行星齿轮减速机，变量马达驱动。
Two crawler tracks are symmetrically arranged, equipped with track board with width of 1.5m, can be operated synchronously or independently to achieve straight drive and turning around. Crawler travel unit has German imported built-in planetary reducer and driven by variable motor.

14 液压系统 Hydraulic System

- 采用开闭式相结合、电比例先导变量泵控系统，系统稳定，速度精调特性好。
Combination of closed/open type system with electronic proportional pilot control and variable displacement pump system, good system stability and fine speed regulation.
- 主、副起升、主、副臂变幅、行走为开式/闭式泵控系统，主变幅具有双泵合流功能。
Main/auxiliary hoist winch, boom/jib luffing winch, travel unit are of open or close type pump control system with confluence function.
- 回转采用闭式泵控系统，配有专用回转缓冲阀，传动平稳无冲击。
Slewing gear is closed type pump control system, no need of balance valve and change valve, smooth drive and no impact.
- 对于调速范围大的主副起升和行走机构，采用变量马达驱动。变量马达+变量泵控系统，可以对运动速度实现精确调控，具有良好的微动性。
Variable displacement motor drive is used for main/auxiliary hoist winch and travel unit with large range of speed regulation. Variable displacement motor + variable displacement pump control system can have accurate regulation for movement speed, and with good fine motion.

15 电气系统 Electrical System

- 电气系统主要包括如下部分：发动机控制、监测仪表、辅助设备、液压系统控制、力矩限制及安全监控等。
Electrical system mainly includes: operation control and safety monitoring for engine, instrument, auxiliary equipment, hydraulic system and load moment limiter.
- 电气系统的构成：常规电气系统和PLC控制系统。
Electrical system composition: conventional electric system and PLC monitoring system.
- 常规电气系统包括电源、起动控制、发动机控制和状态监测、驾驶室空调及音响、照明、雨刮器、对讲机等。
Conventional electrical system including power supply, start control, engine control and state monitoring, cabin air-conditioner and acoustics, illumination (lamp), rain wiper, and interphone.
- PLC控制系统包括主副卷扬、回转、主臂塔臂变幅、左右行走及司机室旋转、翻转等动作的控制,所有动作通过PLC逻辑控制。
PLC control system includes main/auxiliary winch, slewing gear, boom luffing, left/right crawler travel, cabin rotation/tilting. All movements use electro-hydraulic proportional control technology, and with PLC logic control.

16 发动机系统 Engine System

- 型式：国际知名品牌增压、中冷、电控发动机；
Manufacturer: famous brand, turbocharged, inter-cooled and electronic injection;
- 环保性：符合欧洲Ⅲ标准；
Environmental: comply with Euro III emission regulation;
- 燃油箱容积：700L
Fuel tank capacity: 700L

17 平衡重 Counterweight

- 平衡重包括车身平衡重、转台平衡重、超起平衡重。
Counterweight includes car-body counterweight, turntable counterweight, SL counterweight.

18 集中润滑系统 Centralized Lubrication System

- 采用递进式集中润滑系统，电脑编程控制，能够自动、逐点加注润滑油，保证各润滑点油料充足，使车辆保养更加轻松、方便。
The centralized lubrication system is a progressive lubrication system, with computer programming, can automatically point-to-point lubricate grease, ensure each lubrication point with enough grease, and make vehicle maintenance easy and relaxed.

19 吊钩 Hook Block

名称 Name	700T	500T	240T	16T
自重 (t) Dead weight (t)	13.1	12.0	9.0	1.5
数量 Quantity	1	1	1	1
滑轮组 Pulley group	24	18	6	0

注：700t 吊钩为组合式吊钩，可以拆成350t吊钩；
500t 吊钩为组合式吊钩，可以拆成250t吊钩；
240t 吊钩为组合式吊钩，可以拆成100t吊钩。

Notes: 700t hook is a combination hook, which can be disassembled into 350t hook.
500t hook is a combination hook, which can be disassembled into 250t hook.
240t hook is a combination hook, which can be disassembled into 100t hook

安全保护措施 Safety Protection Devices

安全装置包括力矩限制器、转台回转锁销装置、起重臂防后翻装置、起升高度限位装置、风速仪、水平仪、液压系统的溢流阀、平衡阀、双向液压锁、回转警告、行走警告、防雷击保护装置、防过放、角度指示器等。

The safety protection devices comprise: load moment limiter, turntable lock pin, boom backstop, hoist limit switch, anemometer, level gauge, hydraulic system overflow valve, counterbalance valve, two-way hydraulic lock, slewing warning indicator and travel warning indicator, lightning protection device, over-released protection device, angle indicator, etc.

01 安装模式&工作模式切换 switch between installation mode & working mode

- 安装模式下，防过卷装置、起重臂限位装置、力矩限制器等均不起作用，以利于起重机安装；工作模式下，所有安全装置均起作用。

under installation mode, over-released protection device, boom position limiter, and LML are all not working to facilitate installation; under working mode, all the safety devices work.

02 紧急停止功能 Emergency function

- 具有紧急停止功能，可在紧急情况下，快停止所有动作。
- All the movements can be stopped under emergency situation.

03 防误操作功能 Mis-operation protection

- 手柄具备防误操作功能，在手柄前侧设置有安全保护开关，此开关没有按下的时候，所有动作信号被屏蔽，手柄不起作用，防止误操作。

The lever has mis-operation function, there is safety protection switch at the front side of the lever. When this switch is not pressed down, all movements signals are shielded to prevent from mis-operation.

04 防过卷功能 Overall-reeved protection

- 臂头设置过卷装置，防止钢丝绳过卷。当起升到一定高度时候，显示器上的过卷指示灯亮，同时自动停止起升动作。

There is an over-reeved protection device to prevent wire rope from over-reeving. When it reaches to a certain height, the indicator on the screen is light, meanwhile automatically stop hoisting movement.

05 防过放功能 Over-released function

- 起升机构均设置三圈保护器，避免卷筒放绳时产生过放。当卷扬钢丝绳只剩三圈时，显示器上的过放指示灯亮，同时自动停止下落动作。

There is a rope end limiter on the hoisting mechanism to avoid over-releasing of rope. When there are only 3 loops left on the drum, the indicating light is on, meanwhile, the lowering movement automatically stops.

06 棘爪锁止功能 Ratchet locking device

- 具有棘爪锁止装置，用于锁定变幅卷扬，保证臂架在非工作时安全停放。

It is to lock luffing winch to guarantee the safe stock when boom is not working.

07 回转锁止功能 slewing locking function

- 具有回转锁止装置，用于起重机停止时，上车的回转锁定。

There is a slewing locking device for the slewing lock of superstructure.

08 防后倾功能 Backstop protection

- 具有主臂、超起、塔臂及塔臂支架防后倾装置，防止臂架及支架的后仰。

There are main boom backstop and SL backstop devices to prevent boom and its strut from falling backwards.

09 起重臂角度限制 Boom angle limit

- 主臂架起达到规定角度时，起升被停止，由力矩限制器和行程开关双重控制；主臂架在仰角小于规定角度时，下落被停止，由力矩限制器控制并发出声音报警。

When boom angle reaches the max. limit, boom hoisting stops, it is controlled by load moment limiter and stroke switch; when boom angle is smaller than the prescribed angle, the lowering of boom is stopped, it is controlled by load moment limiter and audio warning is sent out.

- 塔臂由限位开关控制上限位和下限位。

The upper and lower limits of tower jib is controlled by limit switch.

10 吊钩防脱功能 hook latch protection

- 所有起重钩均装有防脱卡板，防止悬挂在起重钩钩头的吊索脱落。
All the hook blocks are protected with latches to prevent the rope from falling off.

11 液压系统安全保护功能 Hydraulic system protection

- 配置液压平衡阀、液压溢流阀等装置，保证系统工作时稳定安全。
There are hydraulic system balance valve and overflow valve to guarantee working safety and stability.

12 力矩限制器系统 load moment limiter

- 力矩限制器能自动检测出起重臂的角度、起重载荷。具有预先报警、超载自动停止作业功能。
The load moment limiter automatically detects boom angle, lifting load; it sends out warning previously, and stop crane working once there is an overload.

13 声光报警功能 Audio/Video warning

- 具有三色报警灯和声光报警器，可显示车辆负荷及动作状态，警示司机及车外人员。
There are triple color warning lamp and audio/video warning, the load and movement state can be indicated to give warning to the driver and personnel outside.

14 照明灯 illumination lamp

- 照明灯装在转台前方、操纵室上方和操纵室内，提供照明。
There are illumination lamps at front of turntable, and inside operator's cabin and above the cabin for night operation.

15 后视镜 Rearview mirror

- 位于司机室外侧，便于司机观察机器后方情况。
It is outside the cabin for the driver to observe the rear side of the crane.

16 示高灯 Height indicating lamp

- 示高灯安装在臂架顶部，作为高空警示。
it is on the boom top for aerial warning.

17 风速仪 Anemometer

- 实时检测当前风速，并传送到操纵室的监视器上，提醒操作者注意风载荷安全。
Anemometer detects current wind speed and send wind signal to a monitor in operator's cabin to alert operator for safety.

18 水平仪 level gauge

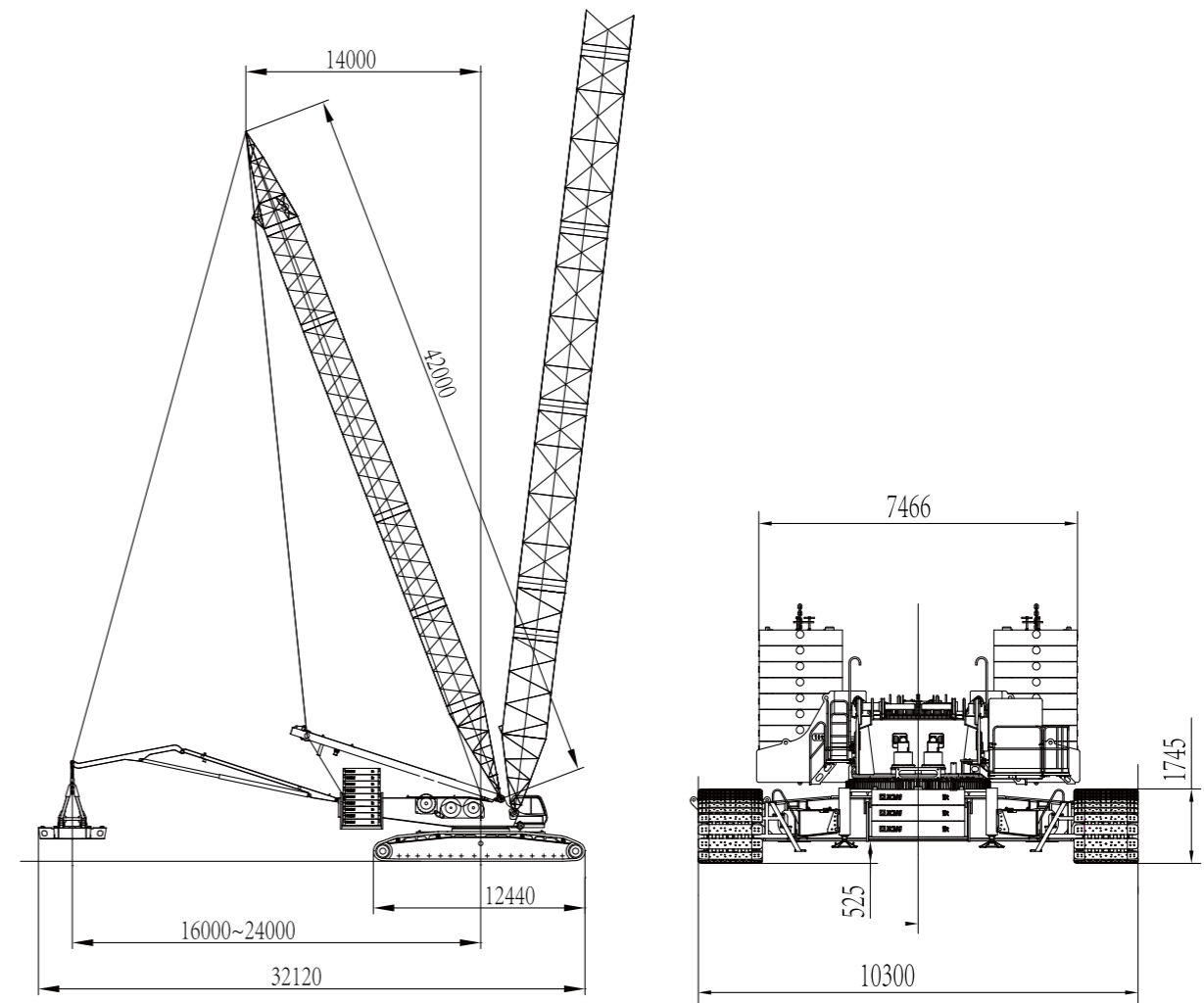
- 配有电子和机械水平仪，可显示使用路面的倾斜程度，为操作者提供机器水平度参考。
There is an electronic and mechanical level gauge to indicate the slope condition for the reference of the driver.

配套件明细表 Main Parts List

序号 No.	部件名称 Parts name		型号 Model	厂家 Manufacturer		
1	发动机 Engine		DC16	国际知名品牌	International well-known brand	
2	液压系统 Hydraulic system	主卷扬 Hoist winch	减速机 Reducer	ZFT110	株齿或其 它同等知名品牌	Zhuzhou Gear or other equivalent well-known brand
			马达 Motor	H1-B-210	丹弗斯或其 它同等知名品牌	DANFOSS or other equivalent well-known brand
		副卷扬 Auxiliary Winch	减速机 Reducer	ZFT110	株齿或其 它同等知名品牌	Zhuzhou Gear or other equivalent well-known brand
			马达 Motor	H1-B-210	丹弗斯或其 它同等知名品牌	DANFOSS or other equivalent well-known brand
		主变幅卷扬 Main luffing winch	减速机 Reducer	ZFT110	株齿或其 它同等知名品牌	Zhuzhou Gear or other equivalent well-known brand
			马达 Motor	A2FM107	德国力士乐或其 它同等知名品牌	Rexroth Germany or other equivalent well-known brand
		塔臂变幅卷扬 tower jib luffing winch	减速机 Reducer	ZFT110	株齿或其 它同等知名品牌	Zhuzhou Gear or other equivalent well-known brand
			马达 Motor	H1-B-210	丹弗斯或其 它同等知名品牌	DANFOSS or other equivalent well-known brand
		超起变幅卷扬 Superlift luffing winch	减速机 Reducer	ZFT110	株齿或其 它同等知名品牌	Zhuzhou Gear or other equivalent well-known brand
			马达 Motor	H1-B-210	丹弗斯或其 它同等知名品牌	DANFOSS or other equivalent well-known brand
		回转 Slewing	马达 Motor	HD—A2FE80	华德或其 它同等知名品牌	Huade Hydraulic or other equivalent well-known brand
			减速机 Reducer	ZFB80	株齿或其 它同等知名品牌	Zhuzhou Gear or other equivalent well-known brand
		行走 Travel	马达 Motor	H1-B-160	丹弗斯或其 它同等知名品牌	DANFOSS or other equivalent well-known brand
减速机 Reducer	CMWG560		大连华锐重工或 其它同等知名品牌	Dalian Huarui or other equivalent well-known brand		
	主泵 Main pump	HPV02-A2-135L	林德或其 它同等知名品牌	Linde or other equivalent well-known brand		
	主阀 Main valve	M7	德国力士乐或其 它同等知名品牌	Rexroth Germany or other equivalent well-known brand		
3	电控系统 Control system	力矩限制器 Load moment limiter	IFLEX5	赫思曼或其 它同等知名品牌	Hirschmann or other equivalent well-known brand	
4	回转支承 Slewing ring		131.50.2930	徐州罗特艾德或 其它同等知名品牌	Rothe Erde Xuzhou or other equivalent well-known brand	
5	吊钩 Hook Block		240t	山东宏瑞达/徐州 大长实或其它同 等知名品牌	Hongda/dachangshi or other equivalent well-known brand	

注：由于制造厂家的不同，型号标注会有差异。
Notes: due to the difference of manufactures, there is difference on the model labeled.

01 XGC11000型履带起重机外形尺寸
1.XGC11000 Crawler Crane Outline Dimension



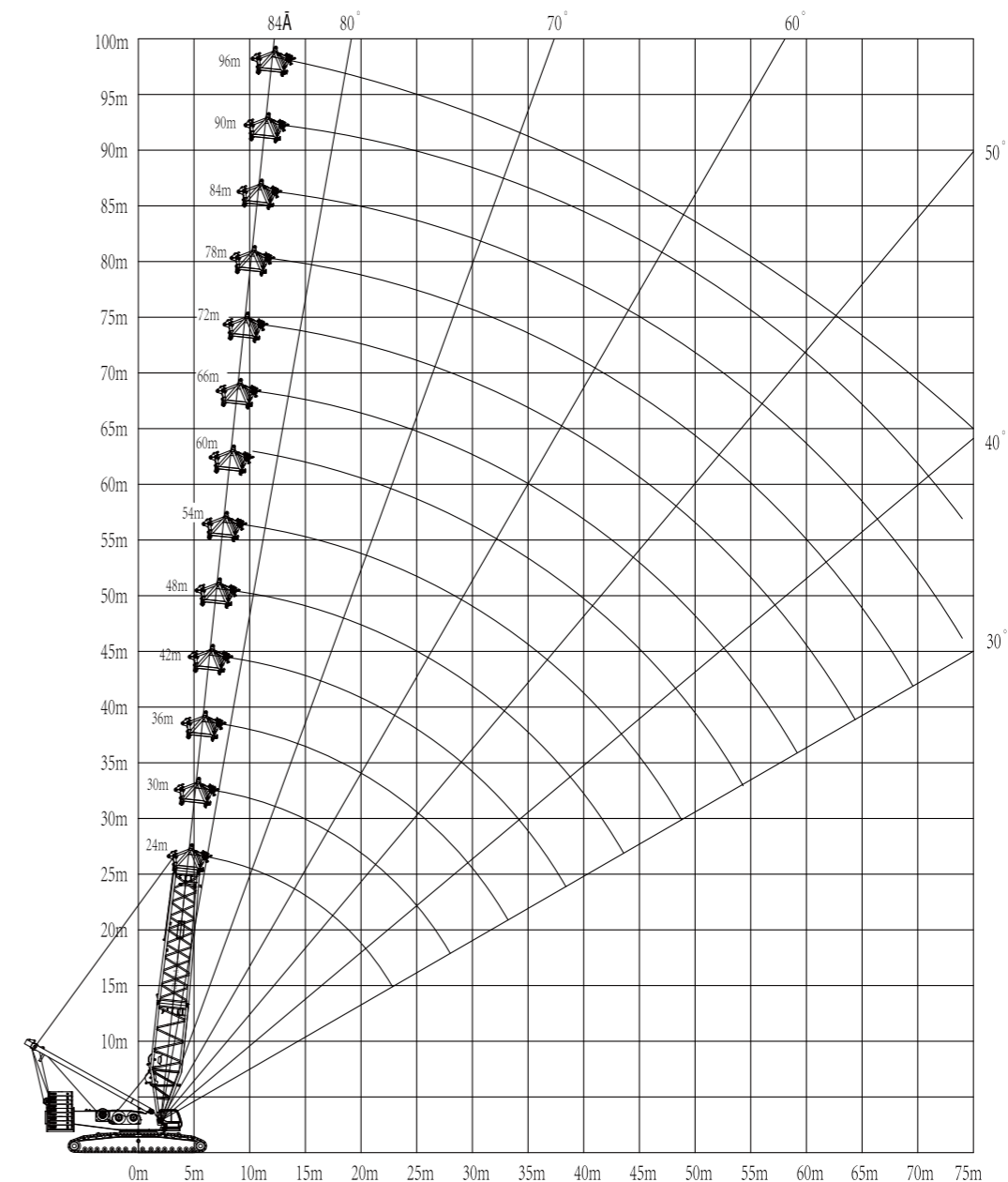
XGC11000履带起重机总体外形尺寸图
XGC11000 Crawler Crane Outline Dimension

02 XGC11000履带起重机主要技术参数
XGC11000 Crawler Crane Main Technical Specifications

项目 Items		单位 Unit	数值 Data	
标准工况 Standard working condition	HB重型主臂工况 Heavy duty boom working condition	t	650	
	LB轻型臂工况 Light duty boom working condition	t	330	
	WJ塔式副臂工况 Tower jib working condition	t	230	
	HJ-S3风电副臂 Wind power jib	t	165	
超起工况 SL working condition	SHB-S7 重型主臂工况 Heavy duty boom working condition	t	650	
	SLB-S7 轻型臂工况 Light duty boom working condition	t	240	
	SLB-TS4 轻型臂工况 Light duty boom working condition	t	254	
	SWJ-S6 塔臂工况 Tower jib working condition	t	360	
	SHJ-S7 风电工况 Wind power working condition	t	170	
	SHJ-S9 风电工况 Wind power working condition	t	240	
	SHJ-TS4 风电工况 Wind power working condition	t	165	
最大起重力矩 Max. lifting load moment	t.m	10800		
尺寸参数 Size and parameters	标准工况 Standard working condition	HB重型主臂工况长 Heavy duty boom working condition length	m	24 ~ 96
		LB轻型臂工况长 Light duty boom working condition length	m	66 ~ 108
		WJ塔式副臂工况长 Tower jib working condition length	m	30 ~ 66+24 ~ 84
		HJ-S3风电副臂主臂长 Wind power jib boom length	m	78 ~ 102
	超起工况 SL working condition	SHB-S7重型主臂工况臂长 Heavy duty boom working condition length	m	48 ~ 114
		SLB-S7轻型臂工况臂长 Light duty boom working condition length	m	114 ~ 147
		SLB-TS4轻型臂工况臂长 Light duty boom working condition length	m	126 ~ 165
		SWJ-S6超起塔臂工况臂长 SL tower jib working condition length	m	48 ~ 108+24 ~ 96
		SHJ-S7风电工况主臂长 Wind power working condition boom length	m	96 ~ 147
		SHJ-S9风电工况主臂长 Wind power working condition boom length	m	96 ~ 168
SHJ-TS4风电工况主臂长 Wind power working condition boom length	m	126 ~ 165		
风电臂长度 Wind power jib length	m	12		
速度参数 Speed parameters	起升最大单绳速度 Max. single line speed for hoisting	m/min	130	
	主臂变幅最大单绳速度 Max. single line speed for boom luffing	m/min	2×56	
	超起变幅最大单绳速度 Max. single line speed for hoisting	m/min	130	
	最大回转速度 Max. slewing speed	rpm	0.7	
	最高行驶速度 Max. travel speed	km/h	1.0	
发动机 Engine	额定功率 Rated power	kw	420	
	排放标准 Emission standard	-	EURO III	
整机重量(基于24m重型主臂, 700t吊钩) Overall crane weight (based on 34m heavy duty boom, 700t)	t	496		
平均接地比压 Average ground pressure	MPa	0.146		
爬坡度 Gradeability	-	10%		
最大单件运输重量 Max. single unit transport weight	t	71		
最大单件运输尺寸(长×宽×高) Max. single unit transport size (L×W×H)	m	12×3.3×3.4		

典型工况载荷表 Load charts of typical working conditions

01 XGC11000_HB标准工况重型主臂
XGC11000_HB standard working condition heavy duty boom



XGC11000_HB标准工况重型主臂作业范围

XGC11000_HB standard working condition heavy duty boom working range

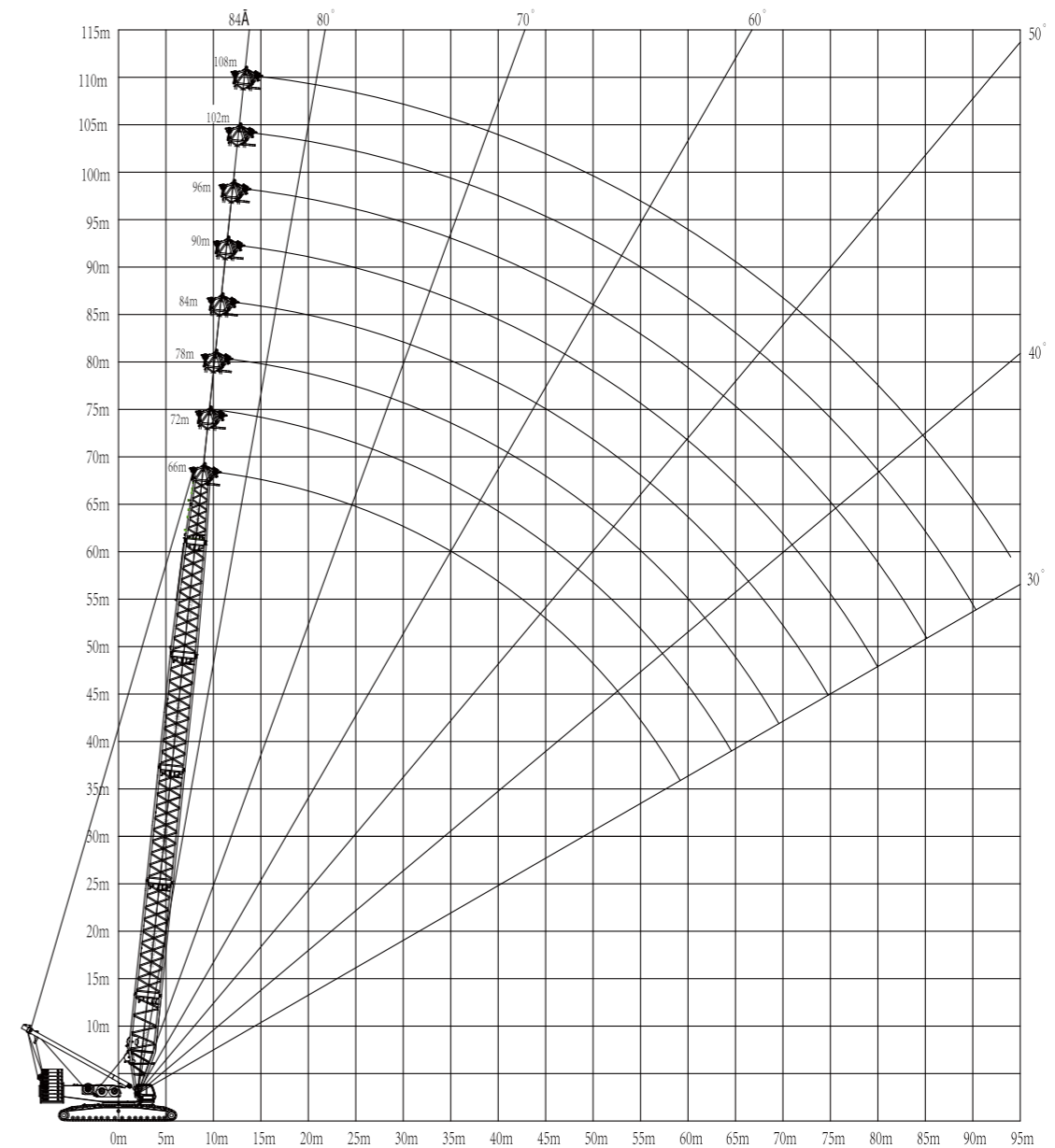
XGC11000_HB 标准工况重型主臂性能表

XGC11000_HB standard working condition heavy duty boom performance table

XGC11000_HB 标准工况重型主臂性能表													
XGC11000_HB standard working condition heavy duty boom performance table													
200t转台平衡重+65t车身平衡重 200t turntable counterweight +65t car-body counterweight													
幅度 (m) Radius (m)	主臂长 (m) Boom length (m)												
	24	30	36	42	48	54	60	66	72	78	84	90	96
6	650												
7	601	600	599										
8	530	528	527	525	494								
9	473	472	470	455	429	406	385						
10	425	424	422	399	379	360	343	328	313				
12	341	333	326	318	305	293	280	270	259	249	239	220	195
14	268	266	261	255	250	245	235	228	219	211	203	197	189
16	218	218	216	212	208	205	201	197	189	183	176	171	164
18	182	182	182	181	177	175	172	170	166	160	155	150	144
20	156	156	156	155	153	152	149	148	145	142	137	133	128
22	136	136	136	135	133	133	131	130	127	125	122	119	114
24		120	119	118	117	117	115	116	113	111	109	107	103
26		106	106	105	104	104	102	103	101	99	97	96	93
28		95	95	94	93	92	91	92	90	89	87	86	84
30			86	85	84	83	82	82	81	80	79	78	76
34				70	69	68	67	67	66	65	64	63	61
38				59	57	57	56	56	55	54	52	51	50
42					48	48	47	47	46	45	43	42	41
46						41	39	40	38	37	36	35	33
50							33	34	32	31	30	29	27
54								28	29	27	26	25	22
58									24	23	22	20	18
62										19	18	17	14
66											15	13	11
70												12	8
74													8
													6

02 XGC11000_LB标准工况轻型主臂

XGC11000_LB standard working condition light duty boom



XGC11000_LB标准工况轻型主臂作业范围

XGC11000_LB standard working condition light duty boom working range

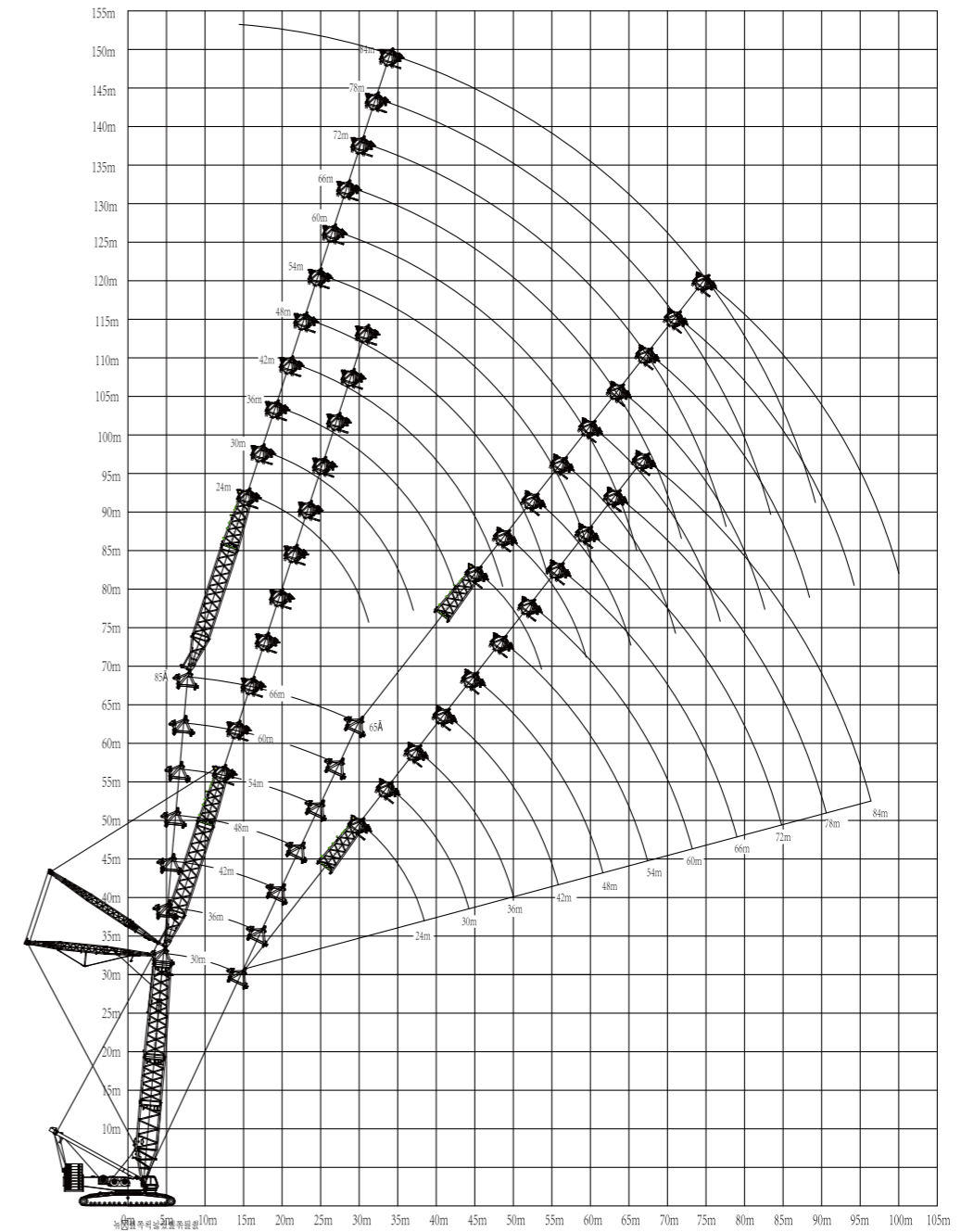
XGC11000_LB 标准工况轻型主臂性能表

XGC11000_LB standard working condition light duty boom performance table

XGC11000_LB 标准工况轻型主臂性能表								
XGC11000_LB standard working condition light duty boom performance table								
200t转台平衡重+65t车身平衡重 200t turntable counterweight +65t car-body counterweight								
幅度 (m) Radius (m)	主臂长 (m) Boom length (m)							
	66	72	78	84	90	96	102	108*
10	330	316						
12	272	262	252	233	194	166		
14	231	223	215	208	189	161	138	118
16	199	193	187	181	175	157	134	115
18	172	169	164	159	155	150	131	112
20	150	148	145	142	138	134	127	108
22	132	130	128	126	124	120	117	105
24	117	116	114	112	111	109	106	102
26	105	104	103	101	99	98	96	93
28	94	93	93	91	90	89	87	85
30	85	84	84	83	81	80	79	78
34	70	69	69	68	67	67	66	65
38	58	58	57	57	56	55	54	54
42	49	49	48	48	47	46	45	45
46	42	42	41	40	40	39	38	37
50	36	36	35	34	33	33	32	31
54	31	31	30	29	28	28	27	26
58	27	26	26	25	24	24	23	22
62		22	22	21	20	20	19	18
66			19	18	17	17	16	15
70			16	15	14	14	13	12
74				13	12	11	10	10
78					10	9	8	7
82						7	6	5
86							4	4

03 XGC11000_WJ标准工况塔臂

XGC11000_WJ standard working condition tower jib



XGC11000_WJ标准工况塔臂作业范围

XGC11000_WJ standard working condition tower jib working range

XGC11000_WJ 标准工况塔臂性能表

XGC11000_LB standard working condition light duty boom performance table

XGC11000_WJ 标准工况塔臂性能表 XGC11000_WJ standard working condition tower jib performance table																		
主臂长度 (m) Boom length (m)	主臂30米 (200t转台平衡重+65t车身平衡重) Main boom 30m (200t turntable counterweight + 65t Car-body counterweight)																	
塔臂长度 (m) tower jib length (m)	24		30			36			42			48			54			
幅度 (m) Radius (m)	主臂角度 Main boom angle																	
	85°	75°	65°	85°	75°	65°	85°	75°	65°	85°	75°	65°	85°	75°	65°	85°	75°	65°
14	230																	
16	217			212														
18	188			184			181											
20	165			162			159			157								
22	147			144			142			140			137					
24	131	122		130			128			126			124			122		
26	117	110		117	109		116			114			112			111		
28	106	99		106	99		105	89		104			102			101		
30		91		96	90		96	75		95			94			93		
34			71	81	76		81	64		80	74		79	73		79		
38			61		65	60	69	56	51	69	64		68	62		67	62	
42						52			45	60	55		59	54		58	53	
46								39		48	44	52	47	43	51	47		
50										43	39	46	42	38	45	41		
54											34		37	33	40	36	37	
58													30			32	32	
62																29	29	
66																	26	
																	23	

XGC11000_WJ 标准工况塔臂性能表

XGC11000_LB standard working condition light duty boom performance table

XGC11000_WJ 标准工况塔臂性能表 XGC11000_WJ standard working condition tower jib performance table																		
主臂长度 (m) Boom length (m)	主臂30米 (200t转台平衡重+65t车身平衡重) Main boom 30m (200t turntable counterweight + 65t Car-body counterweight)																	
塔臂长度 (m) tower jib length (m)	60		66			72			78			84						
幅度 (m) Radius (m)	主臂角度 Main boom angle																	
	85°	75°	65°	85°	75°	65°	85°	75°	65°	85°	75°	65°	85°	75°	65°	85°	75°	65°
26	109																	
28	99			98														
30	91			90			88											
34	78			77			75			74			66					
38	66			66			65			64			63					
42	58	52		57			56			55			54					
46	50	45		50	45		49	43		48			47					
50	44	40		44	39		43	38		42	37		41					
54	39	35	31	39	35		38	33		37	33		36	32				
58	35	31	28	35	31	27	34	29		33	29		32	28				
62	31	28	24	31	27	24	30	26	22	29	25		28	24				
66		25	22	28	24	21	27	23	20	26	22	19	25	21				
70			19		22	19	24	20	17	23	20	17	22	19	15			
74					19	16	21	18	15	21	18	14	20	16	13			
78						14		16	13	18	15	13	17	14	11			
82									11		13	11	15	12	10			
86											9	13	11	8				
90											8		9	7				
94															5			

XGC11000_WJ 标准工况塔臂性能表

XGC11000_LB standard working condition light duty boom performance table

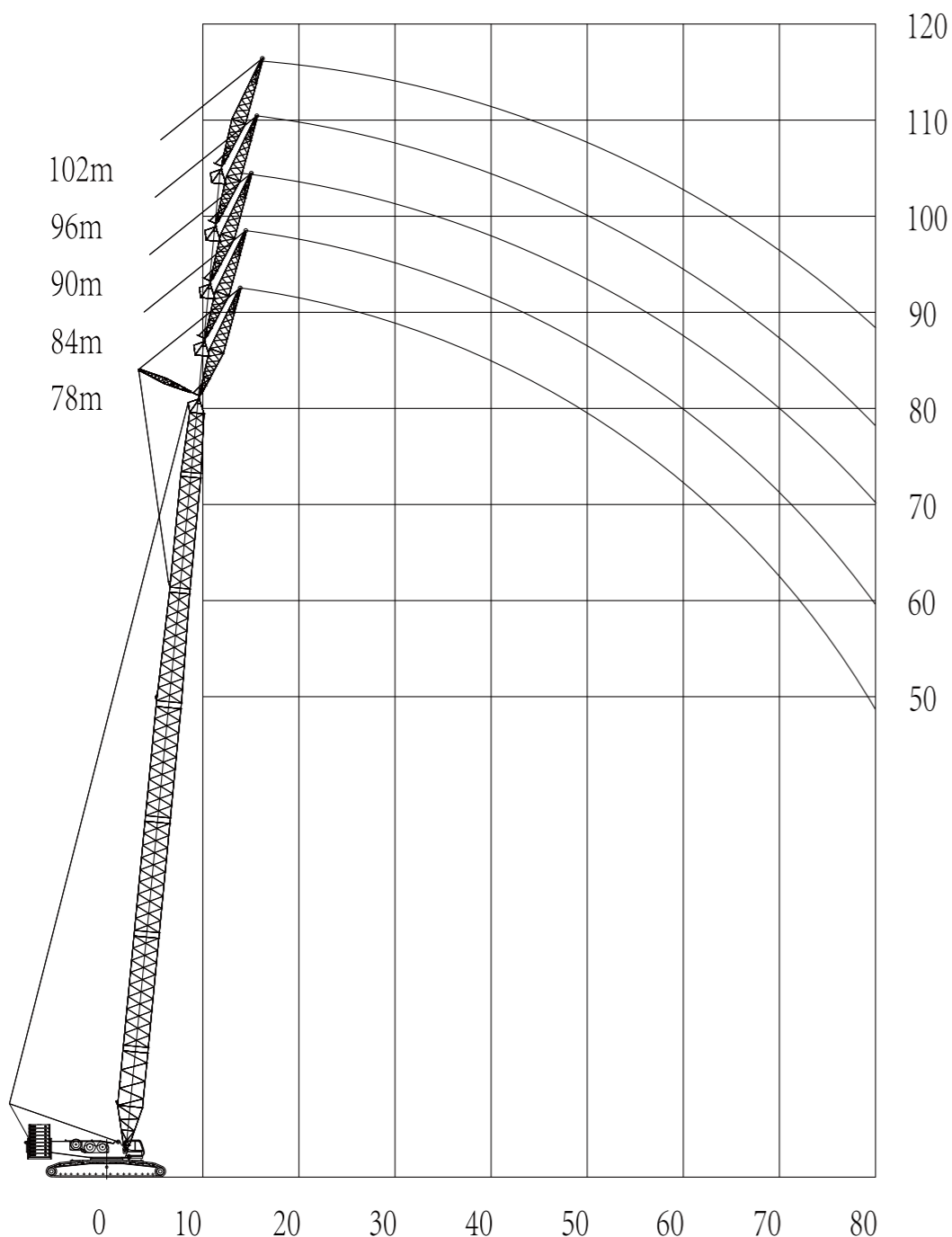
XGC11000_WJ 标准工况塔臂性能表 XGC11000_WJ standard working condition tower jib performance table																		
主臂长度 (m) Boom length (m)	主臂66米(200t转台平衡重+65t车身平衡重) Main boom 66m (200t turntable counterweight+65tCar-body counterweight)																	
塔臂长度 (m) tower jib length (m)	24		30			36			42			48*			54			
幅度 (m) Radius (m)	主臂角度 Main boom angle																	
	85°	75°	65°	85°	75°	65°	85°	75°	65°	85°	75°	65°	85°	75°	65°	85°	75°	65°
18	156																	
20	141			137														
22	129			125			121											
24	118			114			111			107								
26	109			106			102			99			96			89		
28	101	65		98			95			92			89			86		
30	94	56		91	54		88			86			83			80		
34		48		79	47		77			75			72			70		
38					41		68	53		67			64			62		
42							58	46		58	45		57	38		55		
46								40		51	39		50	33		49		
50			28			27		35			34		44	29		44	32	
54						23		31	22		30		39	26		39	28	
58						20			19		27	18		22	14	34	25	
62									17			16		20	12		22	
66												14			10		19	11
70												12			9		17	9
74																		8
78																		6
82																		5

XGC11000_WJ 标准工况塔臂性能表

XGC11000_LB standard working condition light duty boom performance table

XGC11000_WJ 标准工况塔臂性能表 XGC11000_WJ standard working condition tower jib performance table																
主臂长度 (m) Boom length (m)	主臂30米(200t转台平衡重+65t车身平衡重) Main boom 30m (200t turntable counterweight + 65t Car-body counterweight)															
塔臂长度 (m) tower jib length (m)	60		66			72			78			84				
幅度 (m) Radius (m)	主臂角度 Main boom angle															
	85°	75°	65°	85°	75°	65°	85°	75°	65°	85°	75°	65°	85°	75°	65°	85°
28	78															
30	76				69											
34	68				63				57					52		
38	60				58				53					48		43
42	53				52				48					44		40
46	47				46				43					40		36
50	42	30			41				38					36		33
54	37	27			36	26			34					32		30
58	32	23			32	22			30	21				28	20	26
62	28	20			27	20			26	18				25	17	23
66	24	18			24	17			23	16				22	15	20
70		16	8		20	15			20	14				19	13	18
74		14	6		13	5			17	12				16	11	15
78			5		11	4			10	3				14	9	13
82				4	10	3			8	1				12	8	11
86				2		2			7					6		9
90						1								5		4

04 XGC11000 HJ-S3 标准工况风电副臂
XGC11000_HJ-S3 SL standard working condition wind power jib



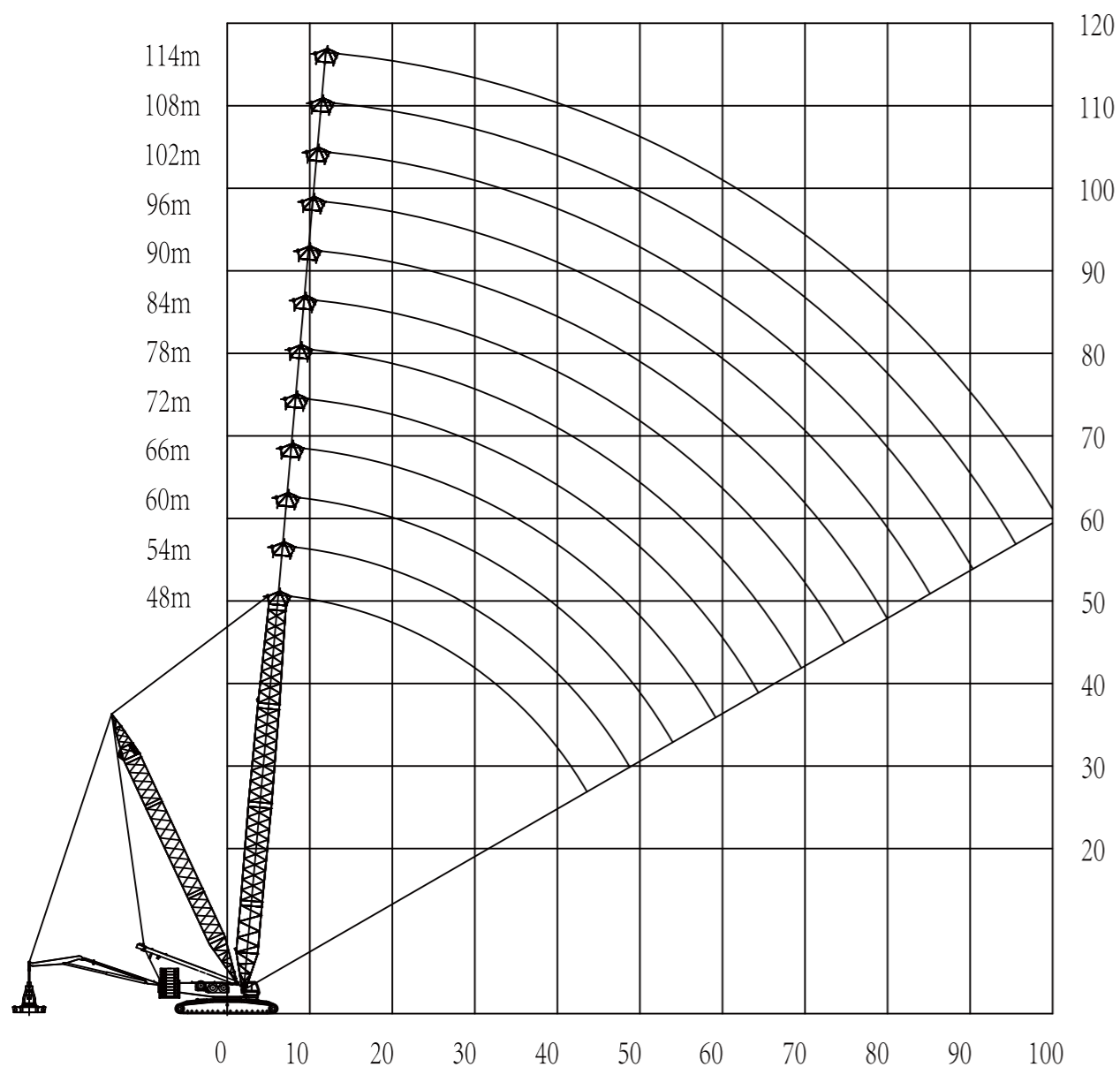
XGC11000_HJ-S3 标准工况风电副臂作业范围

XGC11000_HJ-S3 SL standard working condition wind power jib working range

XGC11000_HJ-S3标准风电工况额定起重量表
XGC11000_HJ-S3 SL standard working condition wind power jib performance table

XGC11000_HJ-S3 标准工况风电副臂性能表 (主副臂夹角15°, 副臂12m)									
XGC11000_HJ-S3 SL standard working condition wind power jib performance table (Angle between main boom and jib 15°, Jib 12m)									
210t转台平衡重+65t车身平衡重 210t turntable counterweight+65t car-body counterweight									
幅度 (m) Radius (m)	主臂长 (m) Boom length (m)								
	78	81	84	87	90	93	96	99	102
15	196	195	191	188					
16	186	182	179	176	173	170	167	164	
17	174	171	168	165	163	160	157	154	151
18	164	161	158	155	153	150	148	145	142
19	154	152	149	146	144	142	139	137	134
20	146	143	141	138	136	134	132	129	126
21	138	135	133	131	129	127	125	122	119
22	131	128	126	124	122	120	118	116	112
24	118	116	114	112	111	108	106	104	101
26	106	104	103	101	100	98.7	96.9	94.9	92.8
28	95.7	94.5	93.5	92.3	91.8	89.9	88.2	86.3	85.3
30	86.9	85.7	84.7	83.6	83.2	82	80.5	78.7	77.8
34	71.8	70.9	70.2	69.3	69	67.9	66.9	65.8	64
38	59.6	58.6	57.9	57	57	56	55.3	54.4	53
42	50	49	48.3	47.3	47.3	46.3	45.6	44.6	43.3
46	42.2	41.2	40.5	39.5	39.4	38.5	37.7	36.7	35.4
50	35.8	34.7	34	33	33	32	31.2	30.2	29.9
54	30.4	29.3	28.6	27.6	27.5	26.5	25.8	24.8	23.5
58	25.7	24.7	24	22.9	22.9	21.9	21.1	20.1	19.8
62	21.8	20.7	20	18.9	18.9	17.9	17.1	16.1	15.8
66	18.3	17.2	16.5	15.4	15.4	14.4	13.6	12.6	11.3
70	15.2	14.2	13.4	12.4	12.3	11.3	10.5		

05 XGC11000 SHB-S7 超起工况重型主臂【增强型】
XGC11000_SHB-S7 SL working condition heavy duty boom [strengthened]



XGC11000_SHB-S7 超起工况重型主臂【增强型】作业范围

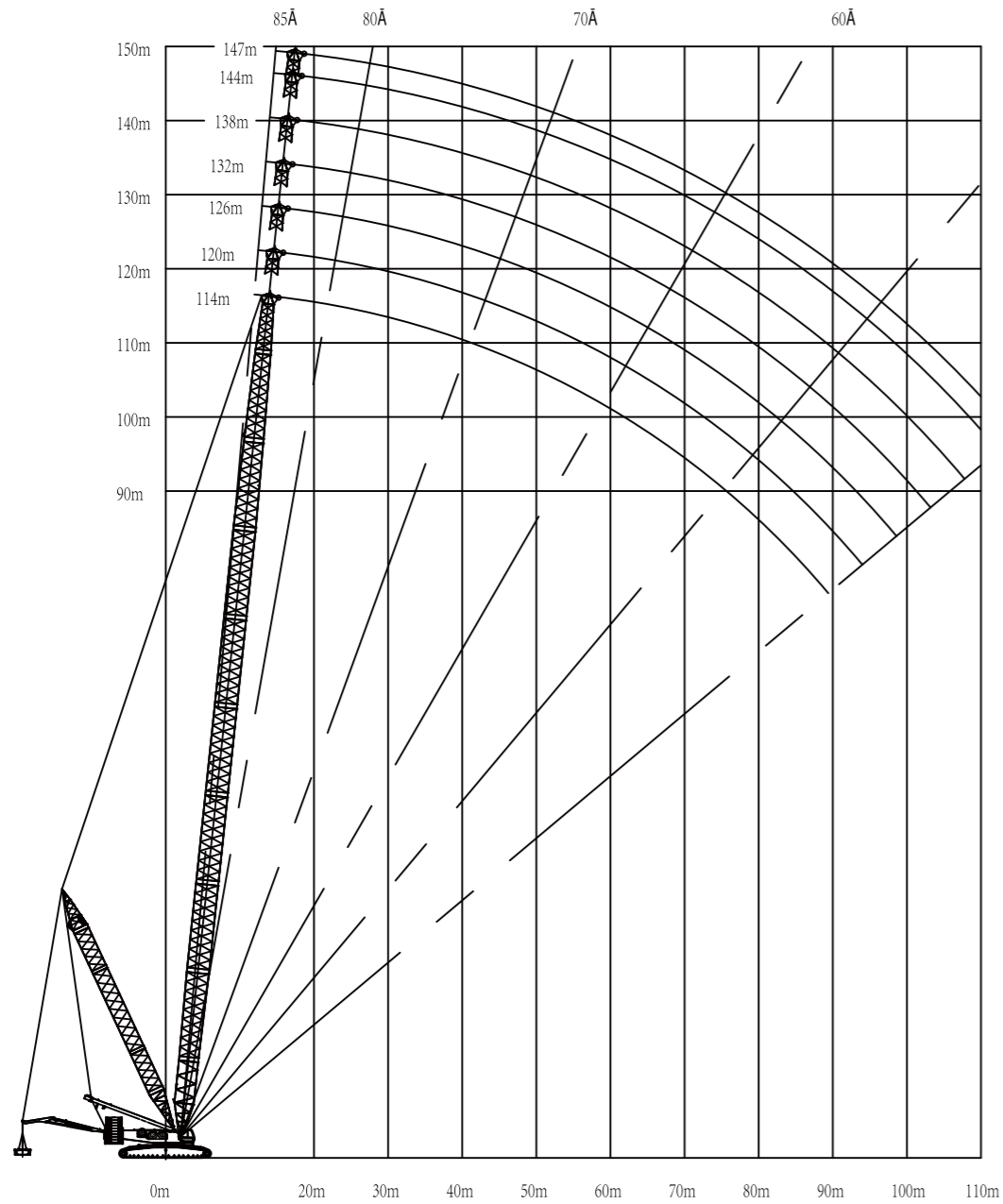
XGC11000_SHB-S7 SL working condition heavy duty boom [strengthened] working range

XGC11000_SHB-S7 超起工况重型主臂【增强型】性能表

XGC11000_SHB-S7 SL working condition heavy duty boom [strengthened] performance table

XGC11000_SHB-S7 超起工况重型主臂【增强型】性能表												
XGC11000_SHB-S7 SL working condition heavy duty boom [strengthened] performance table												
转台平衡重 200t 车身压重 65t 超起平衡重 340t 超起半径 24m												
Turntable counterweight 200t Car-body counterweight 65t SL counterweight 340t SL radius 24m												
半径 (m) Radius (m)	主臂长 (m) Boom length (m)											
	48	54	60	66	72	78	84	90	96	102	108	114
9	650	650										
10	650	650	622	562								
11	650	650	622	562	510	455						
12	650	650	622	562	510	455	415					
13	650	648	622	562	510	455	415	374	339			
14	645	640	620	562	510	455	415	374	339	307	274	
15	638	625	610	560	510	455	415	374	339	307	274	243
16	625	610	595	555	508	453	415	374	339	307	274	243
18	600	580	570	545	503	451	414	374	339	307	274	243
20	526	525	523	521	490	448	413	373	338	307	274	243
22	477	476	474	472	471	440	410	372	337	306	273	243
24	436	435	433	431	430	429	405	370	335	305	272	242
26	401	400	398	397	395	394	392	368	333	303	270	241
28	371	370	368	367	365	364	362	360	325	300	268	240
30	345	344	342	340	339	338	336	334	310	296	266	238
34	302	300	299	297	296	294	293	291	289	280	258	230
38	264	264	263	262	262	260	258	257	255	253	245	225
42	234	234	233	232	232	231	230	228	227	225	223	215
46		209	209	208	207	206	205	203	202	201	199	198
50			188	187	186	185	184	183	182	180	179	177
54			170	170	169	168	167	165	164	162	161	159
58				155	154	153	152	150	149	147	146	144
62					141	140	139	137	136	134	133	131
66						128	127	126	125	123	121	120
70							118	117	116	114	113	109
74								108	107	105	104	100
78									98.9	97.8	96.1	94.8
82										90.5	88.8	87.5
86											82.2	80.9
90												76.2
94												
98												

06 XGC11000 SLB-S7 超起工况轻型主臂【增强型】
XGC11000_SLB-S7 SL working condition light duty boom [strengthened]



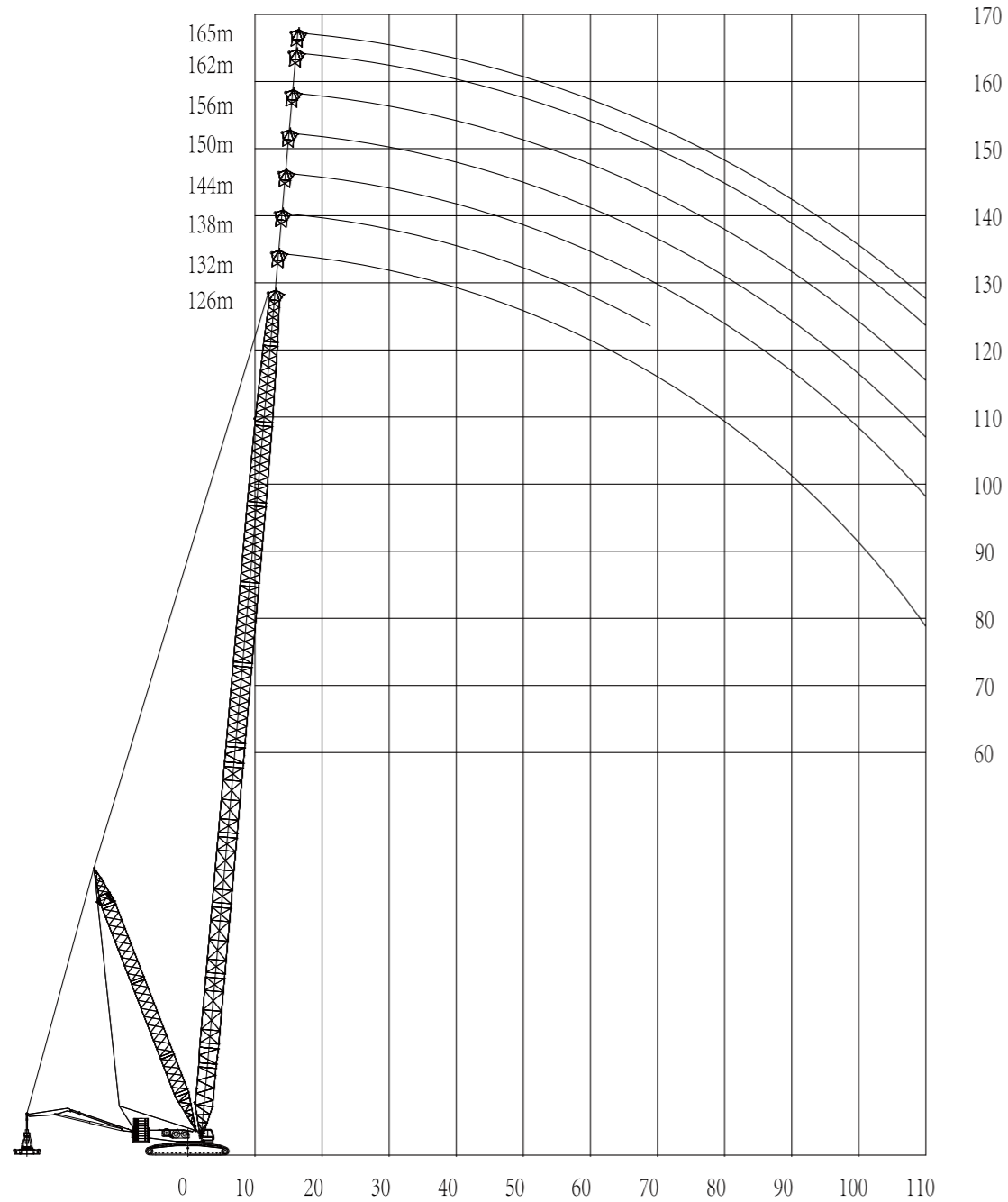
XGC11000_SLB-S7 超起轻型主臂【增强型】工况作业范围

XGC11000_SLB-S7 SL light duty boom [strengthened] working condition range

XGC11000_SLB-S7 超起工况轻型主臂【增强型】性能表
XGC11000_SLB-S7 SL working condition light duty boom [strengthened] performance table

XGC11000_SLB-S7 超起工况轻型主臂【增强型】性能表												
XGC11000_SLB-S7 SL working condition light duty boom [strengthened] performance table												
转台平衡重 200t 车身压重 65t 超起桅杆 36m 超起半径 16~24m 超起配重 0~250t												
Turntable counterweight 200t Car-body counterweight 65t SL mast 36m SL radius 16~24m SL counterweight 0~250t												
半径 (m) Radius (m)	主臂长 (m) Boom length (m)											
	114	117	120	123	126	129	132	135	138	141	144	147
16	240	234	229									
18	240	234	229	216	204	193	182	172	163			
20	239	232	228	216	204	193	182	172	163	154	146	138
22	238	230	227	215	203	192	182	171	163	154	145	138
24	236	227	226	214	203	191	181	170	162	154	144	138
26	233	224	225	213	201	190	180	169	162	153	143	138
28	228	220	223	211	199	188	179	168	161	153	142	137
30	220	215	220	207	196	186	177	167	161	152	141	136
34	208	205	209	201	192	183	175	166	158	150	140	135
38	196	190	190	190	185	175	170	161	155	145	137	133
42	172	171	170	168	168	165	160	153	150	138	134	130
46	153	152	151	149	148	147	146	144	140	132	130	126
50	136	135	135	133	133	132	131	130	129	123	124	120
54	122	121	121	119	119	118	117	116	116	113	114	113
58	110	109	109	107	107	106	105	104	104	102	102	100
62	100	99.4	98.6	96.8	96.7	95.6	94.8	93.7	94.1	92.4	91.6	90.5
66	91.4	90.3	89.5	87.7	87.6	86.4	85.7	84.6	85	83.3	82.5	81.4
70	83.3	82.2	81.4	79.6	79.5	78.4	77.6	76.5	76.9	75.3	74.4	73.4
74	75.9	74.8	74.1	72.3	72.2	71	70.2	69.2	69.6	67.9	67.1	66
78	69.4	68.3	67.5	65.8	65.7	64.5	63.7	62.6	63.1	61.4	60.6	59.5
82	63.5	62.4	61.6	59.9	59.8	58.6	57.8	56.7	57.2	55.5	54.7	53.6
86	58.2	57.1	56.3	54.6	54.5	53.3	52.5	51.4	51.9	50.2	49.4	48.3
90	53.3	52.2	51.5	49.8	49.7	48.5	47.7	46.6	47.1	45.4	44.6	43.5
94	48.9	47.8	47.1	45.4	45.3	44.1	43.3	42.2	42.7	41	40.2	39.1
98	44.8	43.8	43	41.3	41.2	40.1	39.3	38.2	38.7	37	36.2	35.1
102		40	39.3	37.6	37.5	36.4	35.6	34.5	34.9	33.3	32.5	31.4
106			35.8	34.2	34.1	32.9	32.2	31.1	31.5	29.9	29.1	28
110					30.9	29.7	29	27.9	28.4	26.7	25.9	24.8

07 XGC11000 SLB-TS4 超起工况轻型主臂【变形臂】
XGC11000_SLB-TS4 SL working condition light duty boom 【Transformed】



XGC11000_SLB-TS4 超起工况轻型主臂【变形臂】作业范围 (单位m)

XGC11000_SLB-TS4 SL working condition light duty boom 【transformed】 working range (Unit: m)

XGC11000_SLB-TS4 超起工况轻型主臂【变形臂】性能表

XGC11000_SLB-TS4 SL working condition light duty boom 【transformed】 performance table

XGC11000_SLB-TS4 超起工况轻型主臂【变形臂】性能表								
XGC11000_SLB-TS4 SL working condition heavy duty boom 【strengthened】 performance table								
转台配重 180t 车身压重 45t 超起配重 0~380t 超起半径 42m 超起半径16~24m Turntable counterweight 180t Car-body counterweight 45t SL counterweight 0~380t SL radius 42m SL radius 16~24m								
半径 (m) Radius (m)	主臂长 (m) Boom length (m)							
	126	129	132	135	138	141	144	147
16	254	238	224					
17	254	238	224	213	210	198		
18	254	238	224	213	210	198	183	175
19	254	238	224	213	210	198	183	175
20	254	238	224	213	210	198	183	175
22	254	238	224	213	210	198	183	175
24	254	238	224	213	210	198	183	175
26	253	237	223	213	210	198	183	175
28	252	236	222	211	206	195	182	175
30	250	234	220	208	202	192	177	170
34	247	229	217	203	196	186	174	167
38	241	224	212	199	190	181	170	163
42	232	215	203	193	184	172	165	159
46	209	206	196	185	176	165	159	153
50	188	187	186	177	168	158	152	147
54	171	169	169	167	161	150	145	141
58	155	154	153	152	152	145	140	135
62	142	141	140	139	139	137	134	130
66	130	129	128	127	127	125	125	124
70	119	118	117	116	116	115	114	114
74	109	108	107	106	106	105	104	105
78	101	99.9	99.3	98.1	97.9	96.7	96.1	96.3
82	93.2	92.1	91.5	90.3	90.1	88.9	88.3	88.5
86	86.1	85	84.4	83.2	83.1	81.8	81.2	81.4
90	79.7	78.6	78	76.8	76.6	75.4	74.8	75
94	73.8	72.7	72.1	70.9	70.7	69.5	68.9	69.1
98	68.4	67.2	66.7	65.5	65.3	64.1	63.5	63.7
102	63.4	62.3	61.7	60.5	60.4	59.2	58.5	58.8
106	58.7	57.6	57	55.9	55.8	54.5	53.9	54.1
110	54.4	53.3	52.7	51.6	51.5	50.3	49.7	49.9

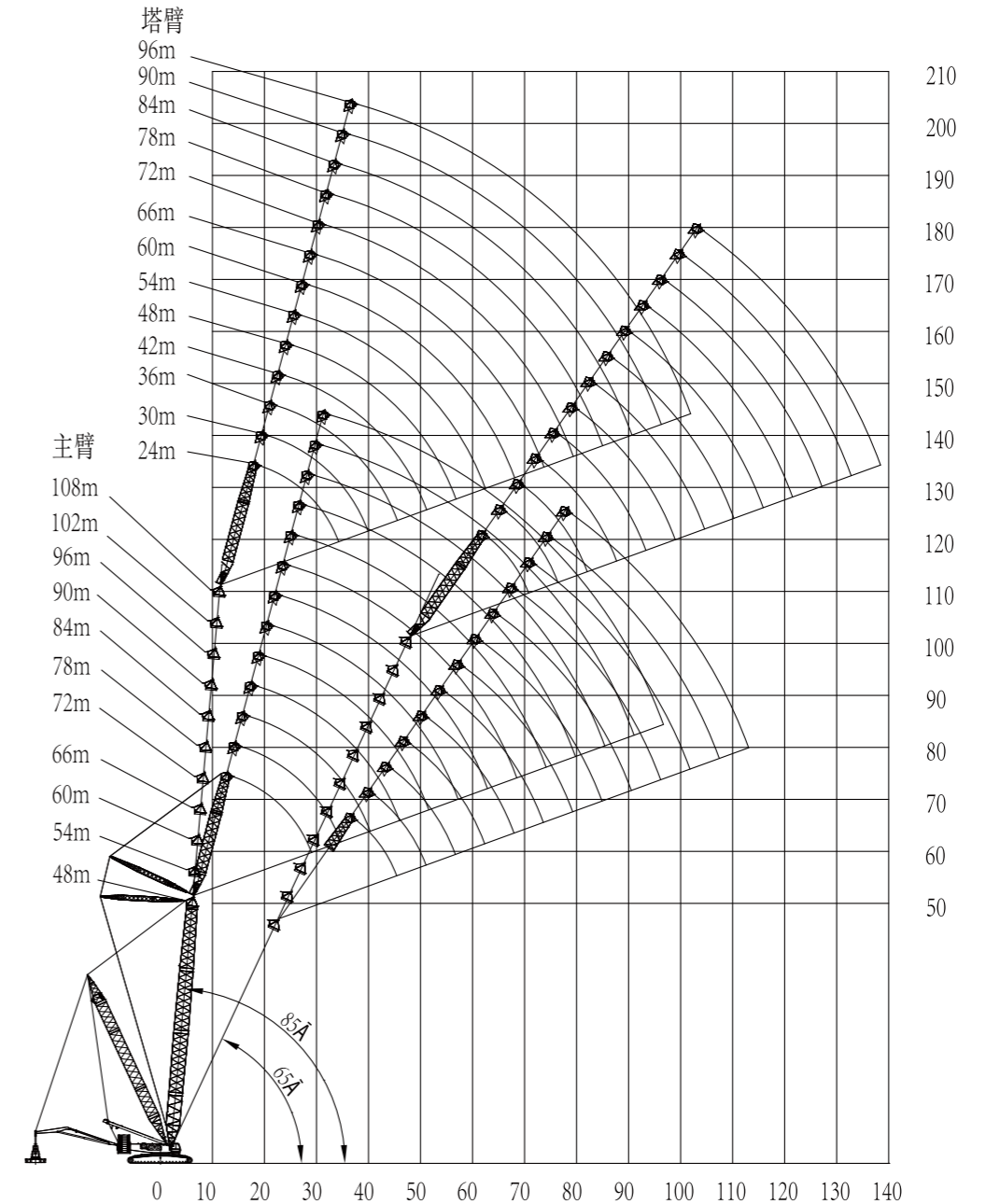
XGC11000_SLB-TS4 超起工况轻型主臂【变形臂】性能表

XGC11000_SLB-TS4 SL working condition light duty boom 【transformed】 performance table

XGC11000_SLB-TS4 超起工况轻型主臂【变形臂】性能表							
XGC11000_SLB-TS4 SL working condition light duty boom 【transformed】 performance table							
转台配重 180t 车身压重 45t 超起配重 0~380t 超起半径 42m 超起半径16~24m							
Turntable counterweight 180t Car-body counterweight							
45t SL counterweight 0~380t SL radius 42m SL radius 16~24m							
半径 (m) Radius (m)	主臂长 (m) Boom length (m)						
	150	153	156	159	162	165	
18	169	161					
19	169	161	155	146	139		
20	169	161	155	146	139	131	
22	169	161	155	146	138	131	
24	169	161	155	146	138	131	
26	169	160	153	145	137	130	
28	167	158	152	143	135	128	
30	164	156	150	141	133	126	
34	160	152	146	138	130	123	
38	155	147	142	134	126	120	
42	151	143	138	130	123	116	
46	146	138	133	126	119	113	
50	141	133	129	122	115	110	
54	137	130	124	118	111	105	
58	130	126	120	114	107	102	
62	125	118	115	110	104	98.8	
66	120	114	110	106	100	95.4	
70	113	109	107	102	96.9	92	
74	104	102.8	102.2	98.6	93.5	88.8	
78	95.4	94.2	93.5	92.3	89.1	85	
82	87.6	86.4	85.7	84.5	83.6	82.5	
86	80.5	79.3	78.6	77.4	76.9	76.3	
90	74.1	72.9	72.2	71	70.5	69.9	
94	68.2	67	66.3	65.1	64.5	64	
98	62.8	61.6	60.9	59.7	59.2	58.6	
102	57.8	56.6	55.9	54.7	54.2	53.6	
106	53.2	52	51.3	50.1	49.6	49	
110	48.9	47.7	47.1	45.9	45	44.8	

08 XGC11000 SWJ-S6 超起工况塔臂【增强型】

XGC11000_SWJ-S6 SL working condition tower jib 【strengthened】



XGC11000_SWJ-S6 超起工况塔臂【增强型】作业范围 (单位m)

XGC11000_SWJ-S6 SL working condition tower jib 【strengthened】 working range (Unit: m)

XGC11000_SWJ-S6 超起工况塔臂【增强型】性能表

XGC11000_SWJ-S6 SL working condition tower jib [strengthened] performance table

XGC11000_SWJ-S6 超起工况塔臂【增强型】性能表																		
XGC11000_SWJ-S6 SL working condition tower jib [strengthened] performance table																		
主臂 48m 主臂角度 85° 超起桅杆 36m 超起半径16~24m 超起平衡重 0~300t 转台平衡重 180t 车身压重 45t Main boom 48m Main boom angle 85° SL mast 36m SL radius 16~24m SL counterweight 0~300t Turntable counterweight 180t Car-body counterweight 45t																		
半径 (m) Radius (m)	副臂长度 (m) Jib length (m)																	
	24	30	36	42	48	54	60	66	72	78	84	90	96					
14	360																	
16	360	323																
18	360	321	268															
20	360	318	266	227														
22	325	302	263	226	193	166												
24	288	280	252	224	192	165	142											
26	258	259	237	213	189	165	142	123										
28	212	236	222	202	181	161	141	122	107	92.9								
30		216	206	191	173	155	137	121	106	92.4	79.7							
34		174	178	168	156	143	129	115	102	90	78.5	68.6	60.2					
38			152	147	140	130	119	108	96.9	86.3	76.3	66.9	59.2					
42				128	124	117	109	100	91.4	82.2	73.3	65.2	57.6					
46					111	109	105	99.9	93.1	85.5	77.8	69.9	62.7	55.6				
50						96.4	94.3	90.5	85.5	79.5	73.2	66.4	59.9	53.5				
54							84	81.6	78.1	73.6	68.5	62.7	57.1	51.3				
58								73.4	71.1	67.8	63.7	58.9	54.1	48.9				
62									66	64.6	62.2	59.1	55.2	51.1	46.5			
66										58.5	56.9	54.6	51.5	48.1	44.1			
70											51.9	50.3	47.8	45.1	41.7			
74												47.3	46.3	44.4	42.1	39.2		
78													42.5	41	39.3	36.9		
82															37.9	36.6	34.5	
86																33.9	32.3	
90																	31.5	30.1
94																		28

XGC11000_SWJ-S6 超起工况塔臂【增强型】性能表

XGC11000_SWJ-S6 SL working condition tower jib [strengthened] performance table

XGC11000_SWJ-S6 超起工况塔臂【增强型】性能表																		
XGC11000_SWJ-S6 SL working condition tower jib [strengthened] performance table																		
主臂 78m 主臂角度 85° 超起桅杆 36m 超起半径16~24m 超起平衡重 0~300t 转台平衡重 180t 车身压重 45t Main boom 78m Main boom angle 85° SL mast 36m SL radius 16~24m SL counterweight 0~300t Turntable counterweight 180t Car-body counterweight 45t																		
半径 (m) Radius (m)	副臂长度 (m) Jib length (m)																	
	24	30	36	42	48	54	60	66	72	78	84	90	96					
18	266																	
20	250	225	201															
22	232	212	192	172														
24	214	198	182	165	148													
26	197	184	171	157	142	128	114											
28	180	170	160	148	136	123	111	99.1										
30	165	157	149	139	129	118	107	96.5	86.2									
34		133	128	122	115	107	99.2	90.4	81.7	73.5	65.5	58.4						
38			109	106	101	96.6	90.3	83.6	76.5	69.6	62.6	56.2	50					
42				93.5	91.8	89.1	85.7	81.3	76.3	70.8	65.1	59.2	53.6	48				
46					79.1	77.6	75.6	72.7	69.1	64.8	60.4	55.4	50.6	45.7				
50						67.5	66.5	64.6	62.1	59	55.6	51.5	47.5	43.2				
54							58.8	58.3	57.2	55.6	53.3	50.7	47.5	44.2	40.6			
58								51.2	50.6	49.6	48	46.1	43.6	41	37.8			
62									44.7	44.1	43	41.7	39.8	37.7	35.1			
66										39.2	38.5	37.7	36.2	34.6	32.4			
70											34.8	34.4	33.9	32.8	31.5	29.8		
74												30.7	30.4	29.6	28.7	27.3		
78													27.3	26.7	26.1	24.9		
82														24.5	24	23.6	22.7	
86															21.6	21.3	20.6	
90																19.2	18.6	
94																	17.3	16.8
98																		15.1

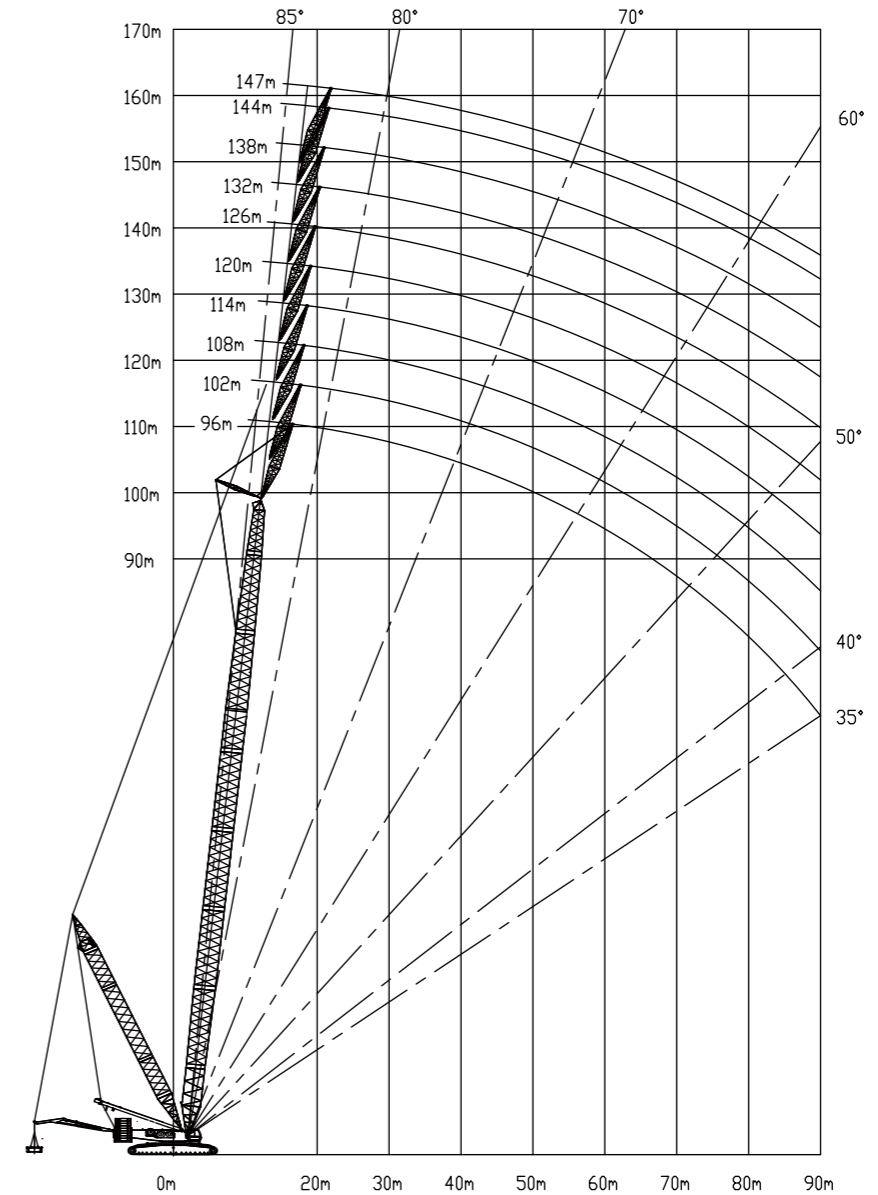
XGC11000_SWJ-S6 超起工况塔臂【增强型】性能表

XGC11000_SWJ-S6 SL working condition tower jib 【strengthened】 performance table

XGC11000_SWJ-S6 超起工况塔臂【增强型】性能表																	
XGC11000_SWJ-S6 SL working condition tower jib 【strengthened】 performance table																	
主臂 108m 主臂角度 85° 超起桅杆 36m 超起半径16~24m 超起平衡重 0~300t 转台平衡重 180t 车身压重 45t																	
Main boom 108m Main boom angle 85° SL mast 36m SL radius 16~24m SL counterweight 0~300t Turntable counterweight 180t Car-body counterweight 45t																	
半径 (m) Radius (m)	副臂长度 (m) Jib length (m)																
	24	30	36	42	48	54	60	66	72	78	84	90	96				
20	168																
22	160	146															
24	151	140	128	117													
26	142	132	122	113	103												
28	133	124	116	108	99.3	90.9											
30	124	117	110	102	95.2	87.7	80	72.5									
34	108	102	97.1	92	86.3	80.5	74.3	68.2	62	56.3							
38		89	85	81.4	77.2	72.9	68.1	63.2	58.1	53.2	48.1	43.5	38.8				
42			74.2	71.5	68.5	65.4	61.7	57.9	53.7	49.7	45.4	41.3	37.1				
46				62.7	60.5	58.3	55.5	52.5	49.2	46	42.3	38.9	35.1				
50					55	53.3	51.7	49.6	47.4	44.7	42.2	39.1	36.2	33			
54						46.9	45.8	44.2	42.5	40.4	38.4	35.9	33.5	30.7			
58							40.5	39.3	38	36.4	34.8	32.7	30.8	28.4			
62								35.9	34.9	33.9	32.6	31.4	29.7	28.1	26.1		
66									31	30.2	29.2	28.3	26.9	25.6	23.9		
70										26.9	26.1	25.4	24.2	23.2	21.7		
74											24	23.3	22.7	21.8	20.9	19.7	
78												20.8	20.3	19.5	18.8	17.7	
82													18.2	17.5	16.9	15.9	
86														15.6	15.1	14.3	
90															13.9	13.5	12.8
94																12	11.4
98																	10.1

09 XGC11000 SHJ-S7超起工况风电副臂

XGC11000_SHJ-S7 SL working condition wind power jib



XGC11000_SHJ-S9 超起工况风电副臂【增强型】作业范围

XGC11000_SHJ-S9 SL working condition wind power jib 【strengthened】 working range

XGC11000_SHJ-S7超起工况风电副臂性能表

XGC11000_SHJ-S7 SL working condition wind power jib performance table

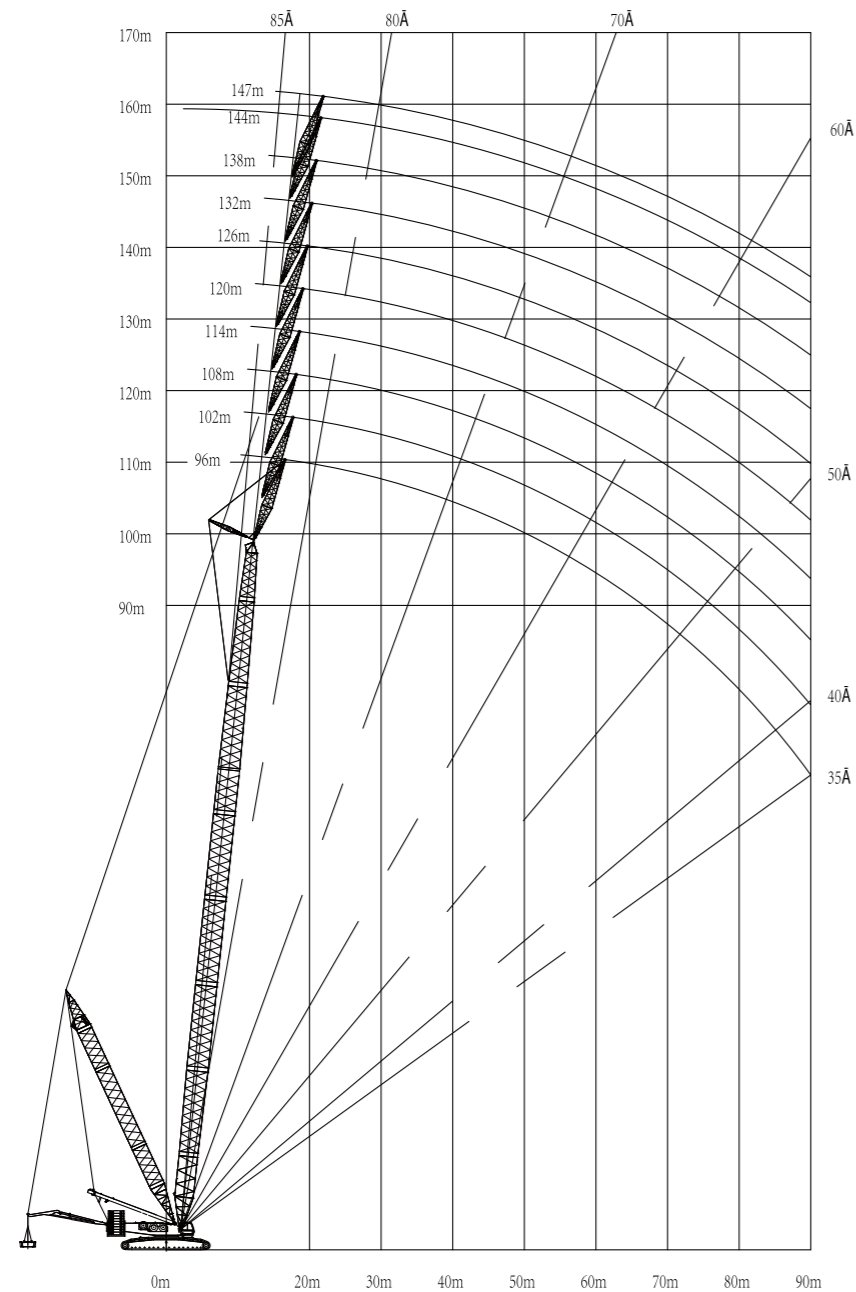
XGC11000_SHJ-S7超起工况风电副臂性能表																		
XGC11000_SHJ-S7 SL working condition wind power jib performance table																		
转台平衡重: 180 t 车身压重: 45t 超起桅杆36m 超起平衡半径16~24m 超起平衡重 0~250t 副臂长度: 12m 主副臂夹角15° Turntable counterweight: 180 t Car-body counterweight : 45t SL mast 36m SL counterweight Radius 16~24m S L counterweight 0~250t Jib 12m Angle between main boom and jib 15°																		
半径 (m) Radius (m)	主臂长度 (m) Boom length (m)																	
	96	99	102	105	108	111	114	117	120	123	126	129	132	135	138	141	144	147
16	170	170																
17	170	170	170	170	169													
18	167	167	167	166	166	165	162	162	157	151								
19	164	164	164	163	163	163	162	162	157	151	144	139	133	127				
20	163	163	163	162	162	162	162	162	157	151	144	139	133	127	119	116	110	105
21	156	157	159	160	162	162	162	160	157	151	144	139	133	127	119	116	110	105
22	153	154	155	157	158	159	162	160	157	151	144	139	133	127	119	116	110	105
24	146	148	149	151	152	153	156	156	157	151	144	139	133	127	119	116	110	105
26	141	142	143	145	146	147	151	151	151	150	144	139	132	126	118	115	109	104
28	135	136	138	139	141	142	145	146	147	147	144	139	132	126	118	115	109	104
30	130	131	133	134	136	137	140	141	142	142	143	138	131	126	117	115	109	104
34	121	122	124	125	127	128	131	131	133	134	135	136	130	124	116	113	108	103
38	113	114	116	117	119	120	122	123	125	126	127	128	126	120	114	111	107	101
42	106	108	109	111	112	114	115	116	118	119	120	121	122	117	111	109	105	98.8
46	101	102	103	105	106	108	109	110	112	113	114	115	116	115	109	107	103	96.6
50	96	97	98.5	99.6	100	102	103	104	106	107	108	109	110	111	108	105	101	94.6
54	91	92	93.5	95	96	97.5	99	100	101	102	103	105	106	107	106	103	99	92.5
58	87	88	89.5	90.6	92	93.1	94.6	95.6	96.6	98	99	100	101	102	103	100	96.2	90.5
62	83	84.1	85.6	86.6	88.1	89.1	90.6	91.7	92.8	94	95.1	96.1	97.5	97.1	97.4	95.8	92.6	87.6
66	80	80.5	82	83	84.5	85.5	87	88	89	90	90.7	89.6	88.8	87.7	88	86.5	85.6	84.6
70	77	77.5	79	79	81.1	81.9	83.6	84.6	84.4	82.5	82.3	81.2	80.4	79.4	79.7	78.1	77.3	76.2
74	74	75	75.9	76.5	75.7	74.7	78.8	77.8	77	75.1	74.9	73.8	73	72	72.3	70.7	69.9	68.8
78	71	71.5	71.1	70.1	69.3	68.2	72.2	71.2	70.4	68.5	68.3	67.2	66.4	65.3	65.7	64.1	63.3	62.2
82	66	65.7	65.3	64.3	63.5	62.4	66.3	65.2	64.5	62.6	62.4	61.3	60.5	59.4	59.7	58.1	57.3	56.3
86	60.8	60.4	60	59	58.3	57.2	60.9	59.9	59.1	57.2	57	55.9	55.1	54	54.4	52.8	52	50.9
90	56	55.7	55.3	54.3	53.5	52.4	56.1	55	54.2	52.4	52.2	51.1	50.2	49.2	49.5	47.9	47.1	46

XGC11000_SHJ-S7超起工况风电副臂性能表

XGC11000_SHJ-S7 SL working condition wind power jib performance table

XGC11000_SHJ-S7超起工况风电副臂性能表																		
XGC11000_SHJ-S7 SL working condition wind power jib performance table																		
转台平衡重200t 车身压重65吨 超起桅杆36m 超起平衡重0t 副臂12m 主副臂夹角15° Turntable counterweight 200t Car-body counterweight 65t SL mast 36m SL counterweight 0t Jib 12m Angle between main boom and jib 15°																		
半径 (m) Radius (m)	主臂长度 (m) Boom length (m)																	
	96	99	102	105	108	111	114	117	120	123	126	129	132	135	138	141	144	147
16	170	170																
17	170	169	167	164	161													
18	161	160	157	154	152	149	146	143	141	137								
19	152	151	148	146	143	141	138	135	133	130	128	125	123	121				
20	144	142	140	138	136	133	131	128	126	122	121	118	116	114	113	110	108	105
21	136	135	133	130	128	126	123	120	117	114	113	112	110	108	107	104	102	99.8
22	129	128	126	124	122	119	117	115	113	110	108	106	104	102.3	99.3	98.1	95.9	94.1
24	116	115	114	112	110	108	106	104	102.3	99.3	98.1	95.9	94.1	92	91.4	88.6	86.8	84.8
26	106	105	103	101	99.9	97.8	96.5	94.4	92.7	89.8	88.7	86.6	84.9	82.9	82.4	79.7	78	76.1
28	96.6	95.8	94.5	92.5	90.8	88.8	87.8	85.9	84.2	81.4	80.4	78.4	76.8	74.9	74.5	71.9	70.3	68.4
30	87.3	87.2	86.3	84.4	82.8	81	80.2	78.3	76.7	73.9	73	71.1	69.6	67.8	67.4	64.9	63.4	61.6
34	72.2	72.1	71.5	70.4	69.4	67.6	67.2	65.4	64	61.3	60.5	58.8	57.3	55.6	55.4	53	51.6	49.9
38	59.6	59.8	59.5	58.6	57.8	56.7	56.7	55	53.6	51	50.3	48.6	47.3	45.7	45.5	43.2	41.9	40.3
42	49.2	49.3	49	48	47.3	46.4	47.9	46.3	45	42.5	41.9	40.2	38.9	37.4	37.3	35.1	33.8	32.2
46	40.8	40.8	40.5	39.5	38.8	37.8	40.2	39	37.8	35.3	34.7	33.1	31.9	30.3	30.3	28.2	26.9	25.4
50	33.9	33.8	33.5	32.5	31.7	30.7	33.1	32	31.3	29.1	28.6	27	25.8	24.3	24.3	22.2	21	19.5
54	28	27.9	27.6	26.6	25.8	24.8	27.1	26	25.3	23.4	23.2	21.7	20.5	19	19.1	17	15.8	14.4
58	23	22.9	22.5	21.5	20.8	19.8	22	20.9	20.2	18.3	18.1	17	15.9	14.5	14.5	12.5	11.3	

10 XGC11000 SHJ-S9 超起工况风电副臂【增强型】
XGC11000_SHJ-S9 SL working condition wind power jib [strengthened]



XGC11000_SHJ-S9 超起工况风电副臂【增强型】作业范围

XGC11000_SHJ-S9 SL working condition wind power jib [strengthened] working range

XGC11000_SHJ-S9超起工况风电副臂【增强型】性能表
XGC11000_SHJ-S9 SL working condition wind power jib [strengthened] performance table

XGC11000_SHJ-S9 超起工况风电副臂【增强型】性能表																	
XGC11000_SHJ-S9 SL working condition wind power jib [strengthened] performance table																	
转台平衡重: 180 t 车身压重: 45t 超起桅杆36m 超起平衡重半径16~24m 超起平衡重 0~250t 副臂长度: 12m 主副臂夹角15°																	
Turntable counterweight: 180 t Car-body counterweight : 45t SL mast 36m SL counterweight Radius 16~24m SL counterweight 0~250t Jib 12m Angle between main boom and jib 15°																	
半径 (m) Radius (m)	主臂长度(m) Boom length (m)																
	96	99	102	105	108	111	114	117	120	123	126	129	132	135	138	141	147
16	170	170															
17	170	170	170	170	169												
18	167	167	167	166	166	165	162	162	157	151							
19	164	164	164	163	163	163	162	162	157	151	144	139	133	127			
20	163	163	163	162	162	162	162	160	157	151	144	139	133	127	119	116	105
21	156	157	159	160	162	162	162	160	157	151	144	139	133	127	119	116	105
22	153	154	155	157	158	159	162	160	157	151	144	139	133	127	119	116	105
24	146	148	149	151	152	153	156	156	157	151	144	139	133	127	119	116	105
26	141	142	143	145	146	147	151	151	151	150	144	139	132	126	118	115	104
28	135	136	138	139	141	142	145	146	147	147	144	139	132	126	118	115	104
30	130	131	133	134	136	137	140	141	142	142	143	138	131	126	117	115	104
34	121	122	124	125	127	128	131	131	133	134	135	136	130	124	116	113	103
38	113	114	116	117	119	120	122	123	125	126	127	128	126	120	114	111	101
42	106	108	109	111	112	114	115	116	118	119	120	121	122	117	111	109	98.8
46	101	102	103	105	106	108	109	110	112	113	114	115	116	115	109	107	96.6
50	96	97	98.5	99.6	100	102	103	104	106	107	108	109	110	111	108	105	94.6
54	91	92	93.5	95	96	97.5	99	100	101	102	103	105	106	107	106	103	92.5
58	87	88	89.5	90.6	92	93.1	94.6	95.6	96.6	98	99	100	101	102	103	100	90.5
62	83	84.1	85.6	86.6	88.1	89.1	90.6	91.7	92.8	94	95.1	96.1	97.5	97.1	97.4	95.8	87.6
66	80	80.5	82	83	84.5	85.5	87	88	89	90	90.7	89.6	88.8	87.7	88	86.5	84.6
70	77	77.5	79	79	81.1	81.9	83.6	84.6	84.4	82.5	82.3	81.2	80.4	79.4	79.7	78.1	76.2
74	74	75	75.9	76.5	75.7	74.7	78.8	77.8	77	75.1	74.9	73.8	73	72	72.3	70.7	68.8
78	71	71.5	71.1	70.1	69.3	68.2	72.2	71.2	70.4	68.5	68.3	67.2	66.4	65.3	65.7	64.1	62.2
82	66	65.7	65.3	64.3	63.5	62.4	66.3	65.2	64.5	62.6	62.4	61.3	60.5	59.4	59.7	58.1	56.3
86	60.8	60.4	60	59	58.3	57.2	60.9	59.9	59.1	57.2	57	55.9	55.1	54	54.4	52.8	50.9
90	56	55.7	55.3	54.3	53.5	52.4	56.1	55	54.2	52.4	52.2	51.1	50.2	49.2	49.5	47.9	46

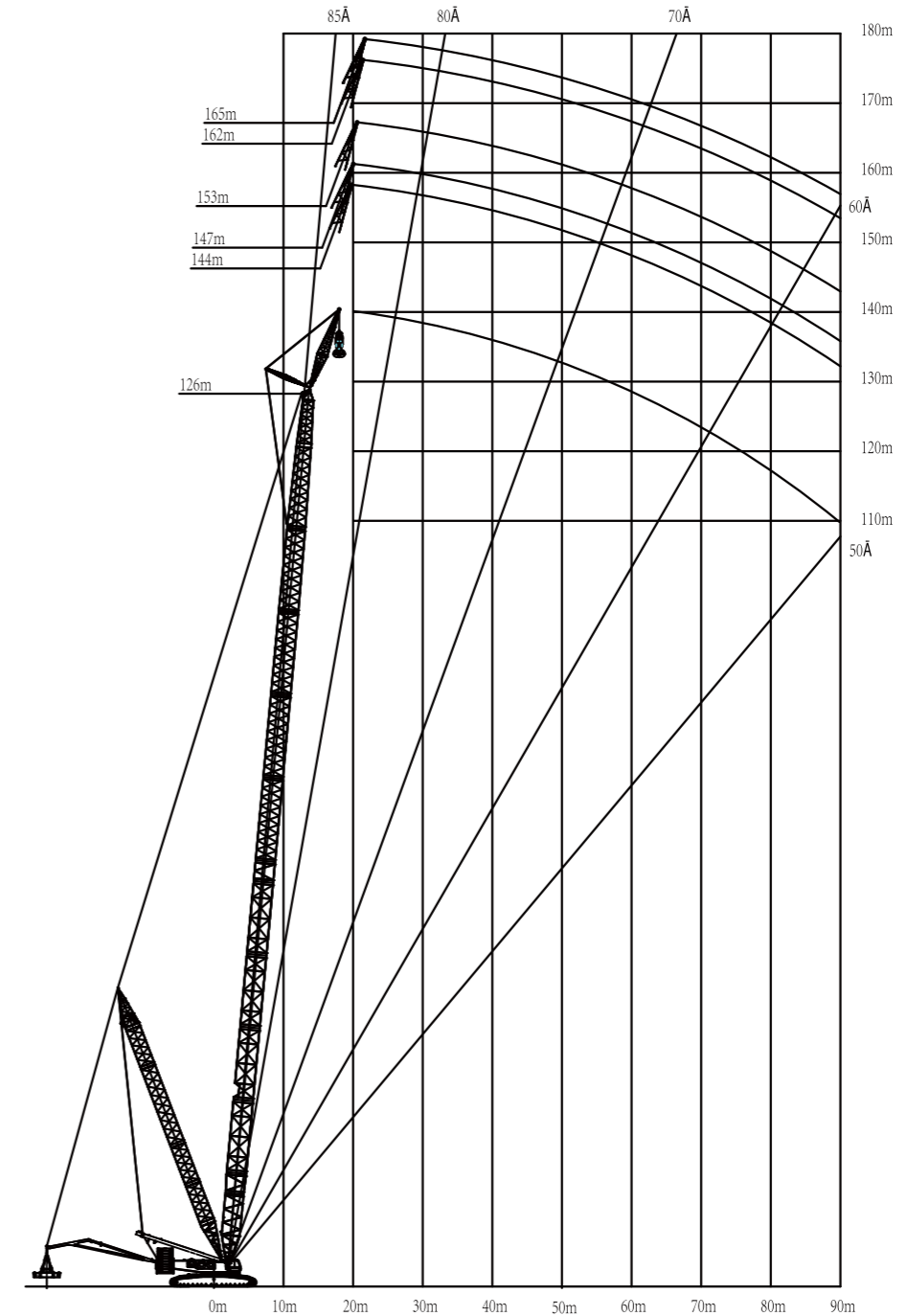
XGC11000_SHJ-S9 超起工况风电副臂【增强型】性能表

XGC11000_SHJ-S9 SL working condition wind power jib [strengthened] performance table

XGC11000_SHJ-S9 超起工况风电副臂【增强型】性能表																		
XGC11000_SHJ-S9 SL working condition wind power jib [strengthened] performance table																		
转台平衡重200t 车身压重65吨 超起桅杆36m 超起平衡重0t 副臂12m 主副臂夹角15°																		
Turntable counterweight 200t Car-body counterweight 65t SL mast 36m SL counterweight 0t Jib 12m Angle between main boom and jib 15°																		
半径 (m) Radius (m)	主臂长度(m) Boom length (m)																	
	96	99	102	105	108	111	114	117	120	123	126	129	132	135	138	141	144	147
16	170	170																
17	170	169	167	164	161													
18	161	160	157	154	152	149	146	143	141	137								
19	152	151	148	146	143	141	138	135	133	130	128	125	123	121				
20	144	142	140	138	136	133	131	128	126	122	121	118	116	114	113	110	108	105
21	136	135	133	130	128	126	123	120	117	114	113	112	110	108	107	104	102	99.8
22	129	128	126	124	122	119	117	115	113	110	108	106	104	102	101	98	96	94.3
24	116	115	114	112	110	108	106	104	102.3	99.3	98.1	95.9	94.1	92	91.4	88.6	86.8	84.8
26	106	105	103	101	99.9	97.8	96.5	94.4	92.7	89.8	88.7	86.6	84.9	82.9	82.4	79.7	78	76.1
28	96.6	95.8	94.5	92.5	90.8	88.8	87.8	85.9	84.2	81.4	80.4	78.4	76.8	74.9	74.5	71.9	70.3	68.4
30	87.3	87.2	86.3	84.4	82.8	81	80.2	78.3	76.7	73.9	73	71.1	69.6	67.8	67.4	64.9	63.4	61.6
34	72.2	72.1	71.5	70.4	69.4	67.6	67.2	65.4	64	61.3	60.5	58.8	57.3	55.6	55.4	53	51.6	49.9
38	59.6	59.8	59.5	58.6	57.8	56.7	56.7	55	53.6	51	50.3	48.6	47.3	45.7	45.5	43.2	41.9	40.3
42	49.2	49.3	49	48	47.3	46.4	47.9	46.3	45	42.5	41.9	40.2	38.9	37.4	37.3	35.1	33.8	32.2
46	40.8	40.8	40.5	39.5	38.8	37.8	40.2	39	37.8	35.3	34.7	33.1	31.9	30.3	30.3	28.2	26.9	25.4
50	33.9	33.8	33.5	32.5	31.7	30.7	33.1	32	31.3	29.1	28.6	27	25.8	24.3	24.3	22.2	21	19.5
54	28	27.9	27.6	26.6	25.8	24.8	27.1	26	25.3	23.4	23.2	21.7	20.5	19	19.1	17	15.8	14.4
58	23	22.9	22.5	21.5	20.8	19.8	22	20.9	20.2	18.3	18.1	17	15.9	14.5	14.5	12.5	11.3	

11 XGC11000_SLB-TS4 超起工况风电副臂【变形臂】

XGC11000_SLB-TS4 SL working condition wind power jib [transformed]



XGC11000_SLB-TS4 超起工况风电副臂【变形臂】作业范围图

XGC11000_SLB-TS4 SL working condition wind power jib [transformed] working range

XGC11000_SLB-TS4 超起工况风电副臂性能表【变形臂】

XGC11000_SLB-TS4 SL working condition wind power jib performance table 【transformed】

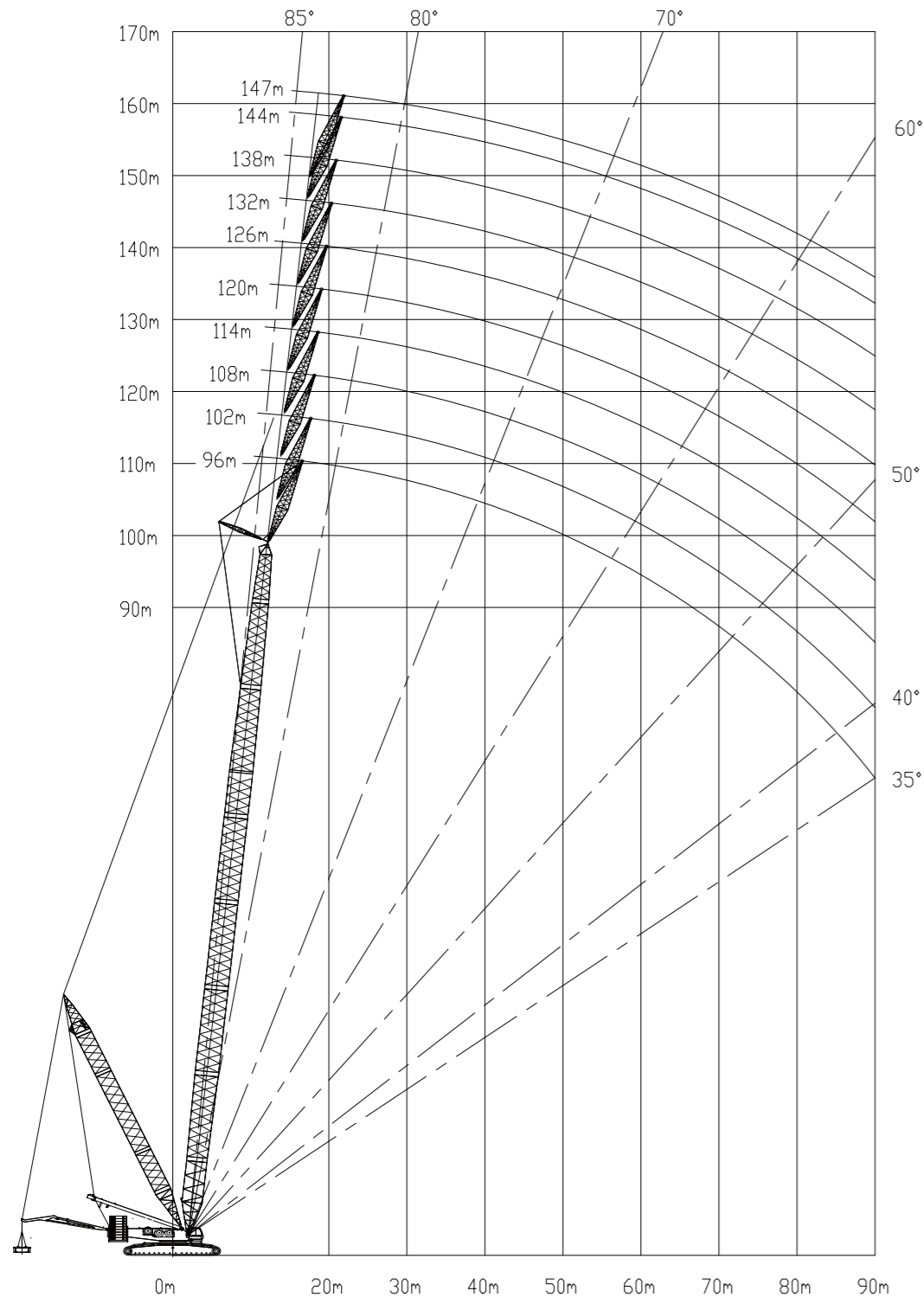
XGC11000_SLB-TS4 超起工况风电副臂性能表【变形臂】														
XGC11000_SLB-TS4 SL working condition wind power jib performance table 【transformed】														
转台平衡重 180t 车身压重 45t 超起桅杆42m 超起半径 16~24m 超起平衡重 0~380t 副臂12m 主副臂夹角15°														
Turntable counterweight 180t Car-body counterweight 45t SL mast 42m SL radius 16~24m														
SL counterweight 0~380t Jib 12m Angle between main boom and jib 15°														
半径 (m) Radius (m)	主臂长度 (m) Boom length (m)													
	126	129	132	135	138	141	144	147	150	153	156	159	162	165
19	165	164	163	162										
20	165	164	163	162	160	158	150	142						
21	165	164	163	162	160	158	150	142	135	128	122			
22	165	164	163	162	160	158	150	142	135	128	122	116	111	105
23	164	164	163	162	160	158	150	142	135	128	122	116	111	105
24	160	162	163	162	160	158	150	142	135	128	122	115	111	105
25	157	159	160	161	160	158	149	142	134	127	121	115	110	104
26	155	156	157	158	159	158	149	142	134	127	121	115	110	104
28	149	150	152	153	154	157	149	142	134	127	121	115	110	104
30	144	145	147	148	149	152	148	140	133	126	120	114	110	104
34	135	136	138	139	140	143	144	138	131	126	119	113	109	102
38	127	128	130	131	132	135	136	136	129	125	118	111	107	101
42	120	121	123	124	125	128	129	130	126	123	116	108	105	100
46	114	115	116	117	119	121	122	123	123	121	113	105	102	98
50	108	109	111	112	113	115	116	117	117	117	110	102	99	96
54	103	104	105	106	108	110	111	112	110	112	107	99	96	93
58	98.9	100	101	102	103	105	106	107	105	107	105	96	93	90
62	94.7	95.8	96.9	98	99.1	101	102	103	101	103	102	93	90	87
66	90.8	91.9	93	94	95.1	97	98	99	98	99	98.1	90	87	83
70	87.3	88.3	89.4	90.4	91.5	93.2	94.3	95.2	95	94	91.4	88.3	84	80
74	84.1	85.1	86.1	87.1	88.2	89.8	90.8	91.8	90.8	87.8	85.3	82.3	81.9	77
82	78.3	79.3	80.3	81.2	82.2	82.8	82.1	80.5	79.6	76.7	74.5	71.7	71.2	68.4
90	73.4	73.1	72.5	71.4	71.1	70	64	68.1	68.5	67.1	65	62.4	61.9	59.3

XGC11000_SLB-TS4 超起工况风电副臂【变形臂】性能表

XGC11000_SLB-TS4 SL working condition wind power jib 【transformed】 performance table

XGC11000_SLB-TS4 超起工况风电副臂【变形臂】性能表														
XGC11000_SLB-TS4 SL working condition wind power jib 【transformed】 performance table														
转台平衡重 200t 车身压重 65t 超起桅杆42m 超起平衡重 0t 副臂12m 主副臂夹角15°														
Turntable counterweight 200t Car-body counterweight 65t SL mast 42m														
SL counterweight 0t Jib 12m Angle between main boom and jib 15°														
半径 (m) Radius (m)	主臂长度 (m) Boom length (m)													
	126	129	132	135	138	141	144	147	150	153	156	159	162	165
19	136	133	131	128										
20	128	126	124	121	119	117	115	112						
21	121	119	117	114	113	110	108	106	105	103	101			
22	115	112	110	108	107	104	102	100	99.8	97.5	95.6	93.4	92.3	90
23	109	106	105	102	101	99	97.3	95	94.3	92.1	90.3	88.1	87.1	84.9
24	103	101	99.6	97.3	96	93.7	92	89.8	89.2	87	85.3	83.2	82.2	80.1
25	98.3	96.1	94.4	92.3	91	88.8	87.1	85	84.4	82.3	80.7	78.6	77.7	75.6
26	93.4	91.2	89.6	87.5	86.3	84.2	82.6	80.4	80	77.9	76.3	74.2	73.4	71.3
28	84.4	82.4	80.9	78.8	77.7	75.7	74.2	72.1	71.8	69.8	68.3	66.3	65.5	63.6
30	76.5	74.5	73.1	71.1	70.1	68.1	66.7	64.8	64.5	62.5	61.1	59.2	58.5	56.6
34	63.1	61.2	59.9	58.1	57.2	55.3	54	52.2	52	50.1	48.8	47	46.5	44.7
38	52.1	50.3	49.1	47.4	46.6	44.8	43.6	41.8	41.7	40	38.7	37	36.5	34.8
42	43	41.3	40.1	38.5	37.7	36	34.9	33.2	33.1	31.4	30.3	28.6	28.2	26.5
46	35.3	33.6	32.5	30.9	30.2	28.6	27.5	25.8	25.8	24.2	23.1	21.4	21.1	19.5
50	28.7	27.1	26	24.4	23.8	22.2	21.1	19.5	19.6	17.9	16.9	15.3	15	13.4
54	23	21.4	20.4	18.8	18.2	16.6	15.6	14	14.1	12.5	11.5			
58	17.9	16.4	15.4	13.9	13.3	11.7	10.7							

XGC11000_SHJ-S9 超起工况风电副臂【增强型】作业范围
XGC11000_SHJ-S9 SL working condition wind power jib [strengthened]



XGC11000_SHJ-S9 超起工况风电副臂【增强型9节-0t+200t+65t】性能表
XGC11000_SHJ-S9 working condition wind power jib [Strengthened 9 sections -0t+200t+65t] performance table

XGC11000_SHJ-S9 超起工况风电副臂【变形臂】性能表																		
XGC11000_SHJ-S9 SL working condition wind power jib [transformed] performance table																		
转台配重 200t 车身压重 65t 超起配重 0 超起桅杆 42m 风电副臂 12m 副臂夹角 15° 240t风电副臂																		
Turntable counterweight 200t Car-body counterweight 65t SL mast 42m																		
SL counterweight 0t Jib 12m Angle between main boom and jib 15° Wind power jib 240t																		
半径 (m) Radius (m)	主臂长度 (m) Boom length (m)																	
	96	99	102	105	108	111	114	117	120	123	126	129	132	135	138	141	144	147
16	204	201																
17	192	189	186	183	180													
18	181	178	175	172	169	166	164	161	158									
19	171	168	165	162	160	157	155	152	150	147	145	142						
20	161	159	156	154	151	148	146	144	141	139	137	134	132	129	127	125		
21	153	150	148	146	143	141	139	136	134	131	130	127	125	122	121	118	116	113
22	145	143	141	138	136	133	132	129	127	125	123	120	118	116	114	112	110	107
23	138	135	134	131	129	127	125	123	121	118	117	114	112	110	108	106	104	102
24	131	129	127	125	123	121	119	117	115	112	111	108	107	104	103	100	99	96.7
25	125	123	121	119	117	115	113	111	109	107	105	103	101	99.4	98	95.7	93.9	91.7
26	119	117	116	113	112	109	108	106	104	102	100	98.4	96.7	94.5	93.1	90.9	89.2	87
28	109	107	105	103	102	99.9	98.6	96.5	94.8	92.7	91.4	89.3	87.6	85.6	84.3	82.1	80.5	78.4
30	99.3	98.2	96.9	94.9	93.3	91.3	90	88	86.4	84.4	83.2	81.1	79.6	77.6	76.4	74.4	72.8	70.8
34	81.8	80.8	80.5	79.6	78.5	76.7	75.6	73.7	72.2	70.3	69.3	67.4	65.9	64.1	63	61.1	59.7	57.8
38	68.3	67.3	67	66	65.3	64.3	63.8	62	60.7	58.9	57.9	56.1	54.8	53	52	50.2	48.9	47.1
42	57.5	56.5	56.1	55.1	54.4	53.4	53	51.9	51.1	49.4	48.5	46.8	45.5	43.8	42.9	41.1	39.9	38.1
46	48.4	47.4	47.1	46.1	45.5	44.4	44.1	42.9	42.2	41.2	40.5	38.8	37.6	36	35.1	33.4	32.2	30.5
50	40.7	39.7	39.4	38.3	37.7	36.6	36.3	35.2	34.6	33.5	33.2	32.1	30.9	29.3	28.5	26.8	25.7	24
54	34.2	33.2	32.8	31.8	31.1	30.1	29.8	28.7	28	26.9	26.6	25.4	24.8	23.5	22.7	21.1	19.9	18.3
58	28.6	27.6	27.3	26.2	25.6	24.5	24.2	23.1	22.4	21.3	20.9	19.8	19.1	18	17.6	16	14.9	13.3
62	23.8	22.8	22.5	21.4	20.8	19.7	19.3	18.2	17.6	16.4	16.1	14.9	14.2	13.1	12.7	11.6	10.5	
66	19.7	18.6	18.3	17.2	16.6	15.5	15.1	14	13.3	12.2	11.9	10.7	10					
70	16	14.9	14.6	13.5	12.9	11.8	11.4	10.3										

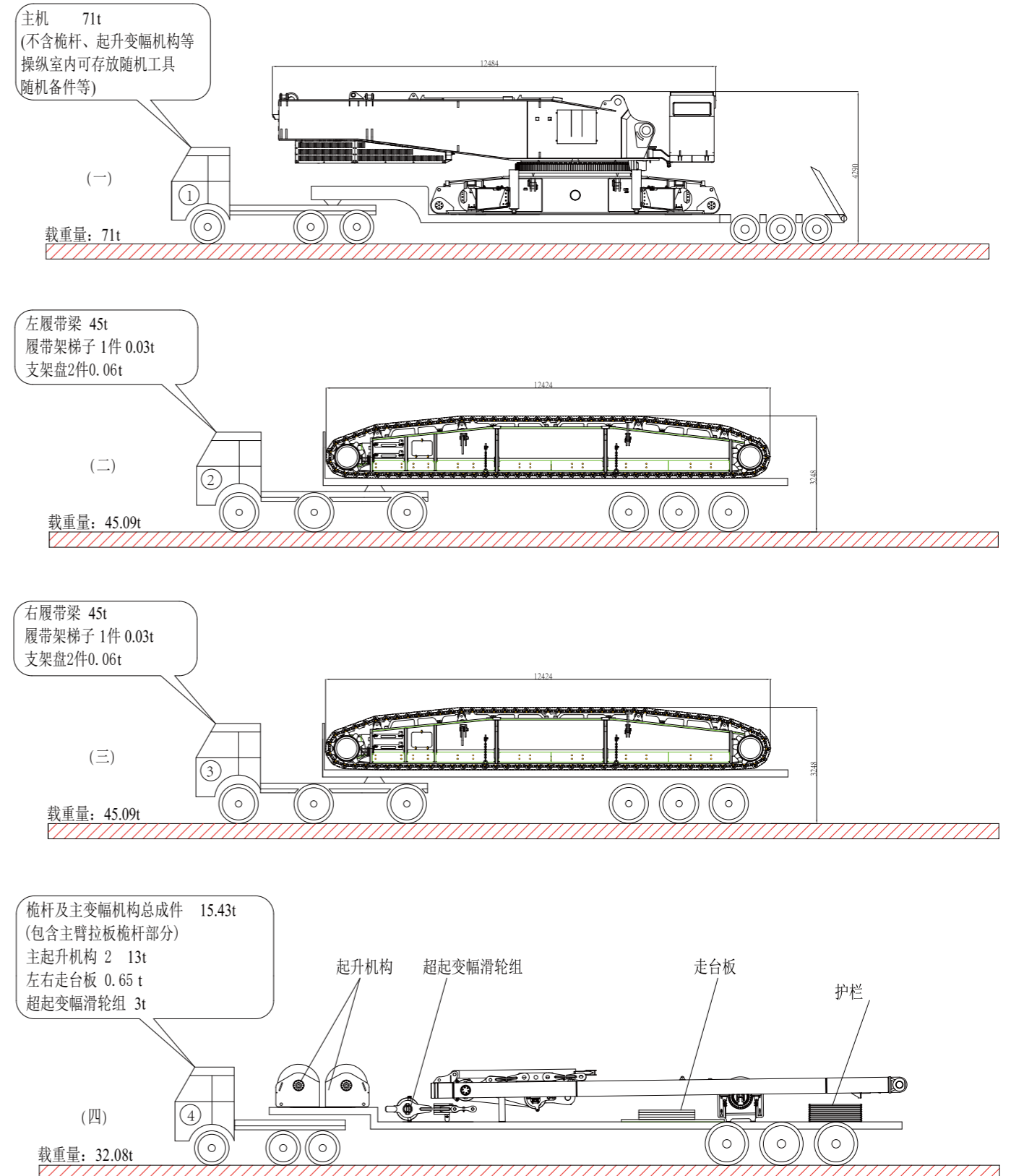
XGC11000_SHJ-S9 超起工况风电副臂【增强型9节-0t+200t+65t】性能表

XGC11000_SHJ-S9 SL working condition wind power jib [Strengthened 9 sections -0t+200t+65t] performance table

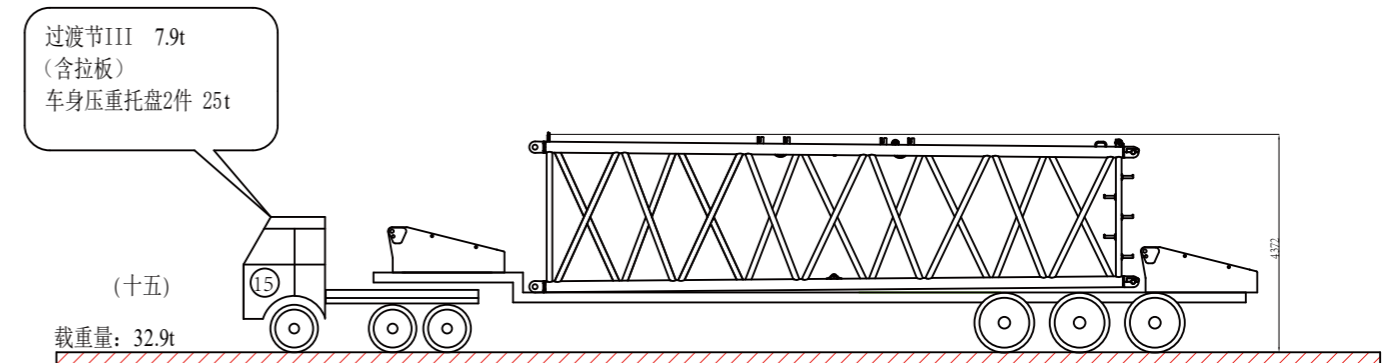
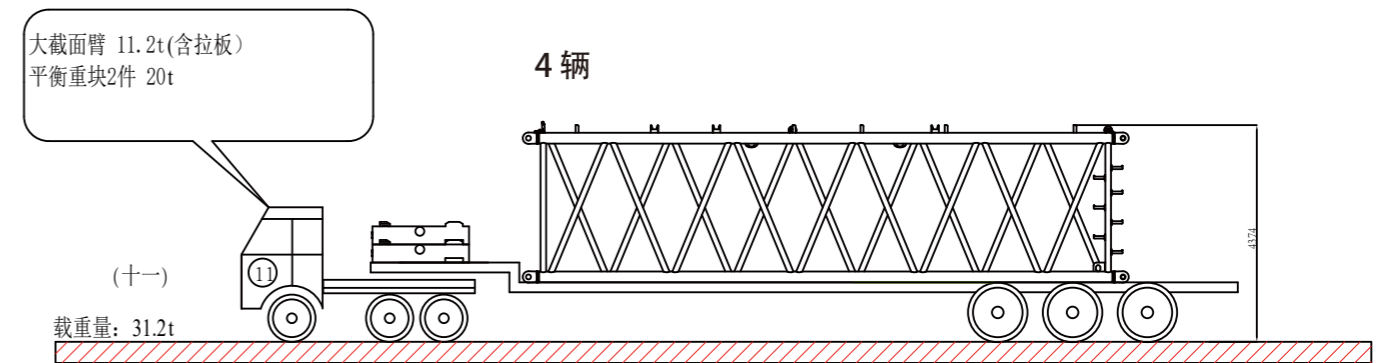
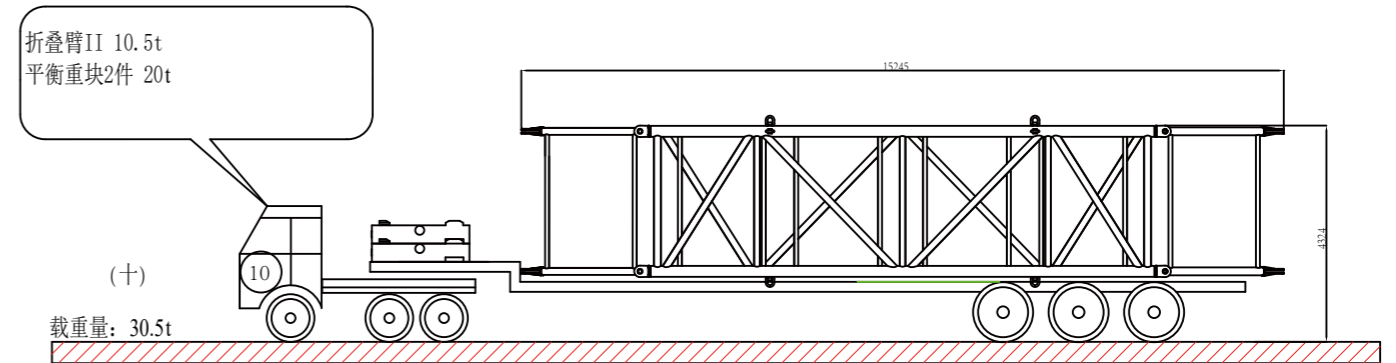
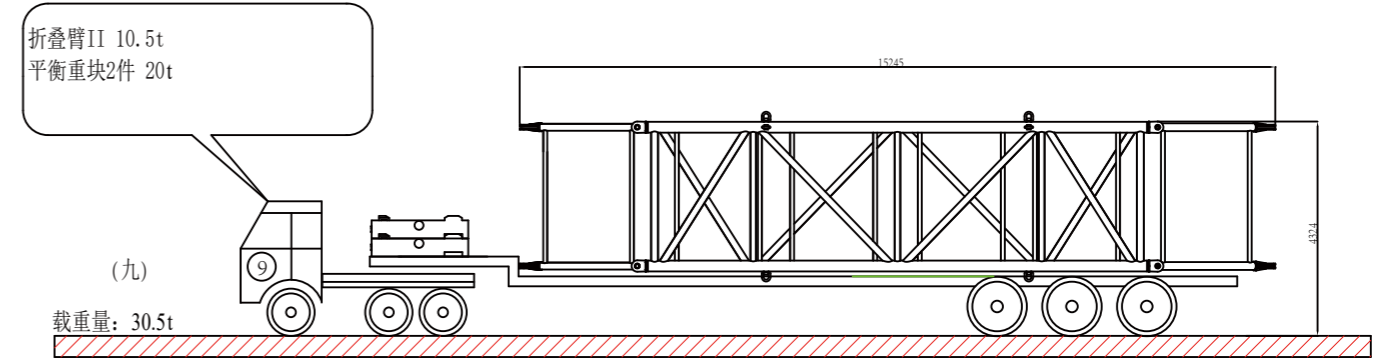
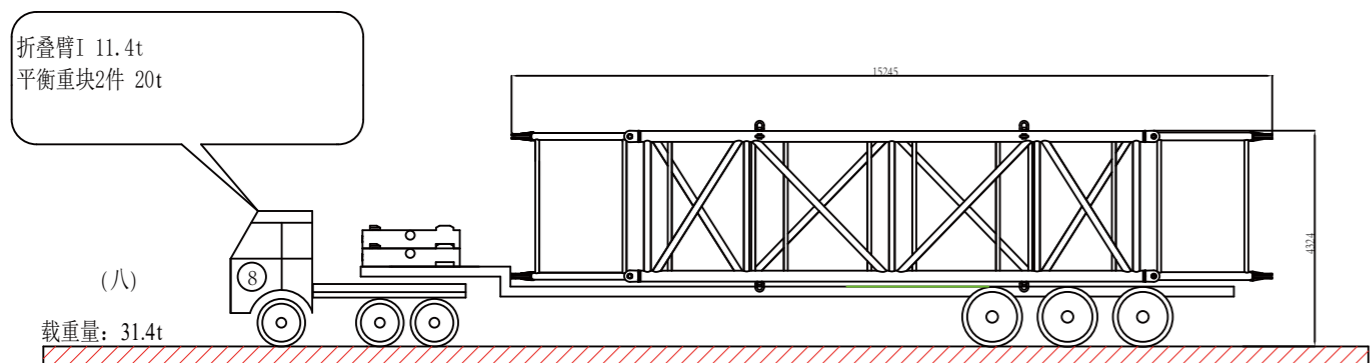
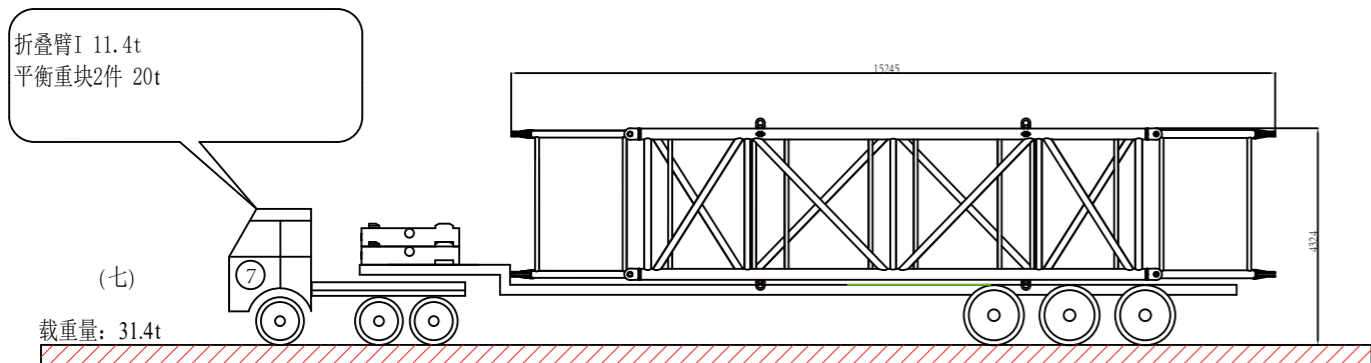
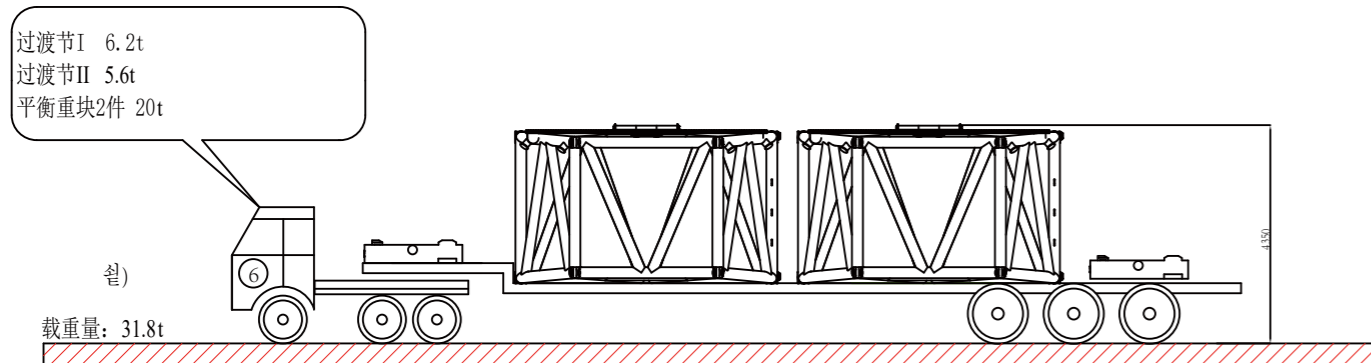
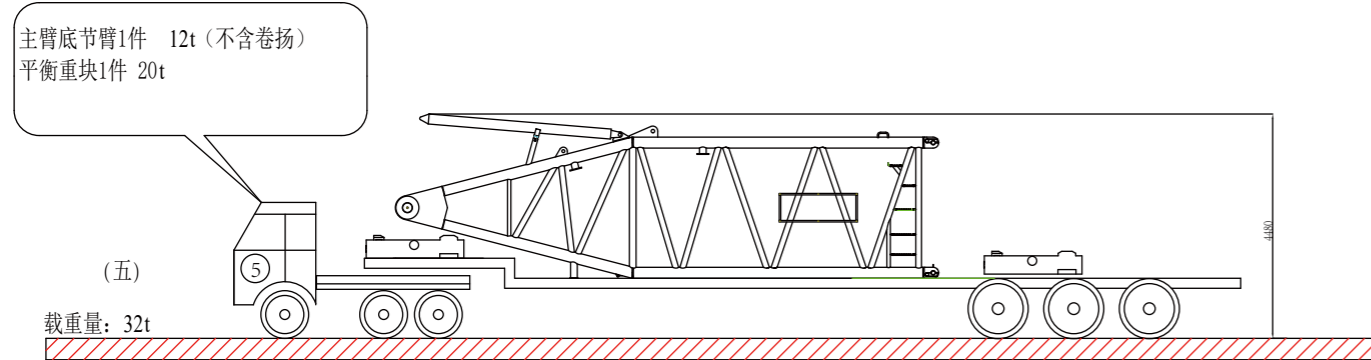
XGC11000_SHJ-S9 超起工况风电副臂【增强型9节-50t+200t+65t】性能表																		
XGC11000_SHJ-S9 SL working condition wind power jib [Strengthened 9 sections -0t+200t+65t] performance table																		
转台配重 200t 车身压重 65t 超起配重 50t 超起半径 24m 超起桅杆 42m 风电副臂 12m 副臂夹角 15° 240t风电副臂																		
Turntable counterweight 200t Car-body counterweight 65t SL Radius 24m SL mast 42m																		
SL counterweight 50t Jib 12m Angle between main boom and jib 15° Wind power jib 240t																		
半径 (m) Radius (m)	主臂长度 (m) Boom length (m)																	
	96	99	102	105	108	111	114	117	120	123	126	129	132	135	138	141	144	147
16	240	231																
17	237	231	223	214	209													
18	232	230	223	214	209	197	195	187	181									
19	223	219	216	212	208	197	195	187	181	174	167	163						
20	211	208	205	202	199	195	194	187	180	174	167	163	158	151	145	138		
21	201	197	195	192	189	186	184	181	178	173	166	163	158	151	145	138	132	125
22	191	188	186	183	180	177	175	172	170	167	165	162	157	150	145	138	132	125
23	182	179	177	174	172	169	167	164	162	159	157	154	152	149	144	137	131	124
24	174	171	169	166	164	161	159	157	154	152	150	147	145	143	141	136	130	123
25	166	163	161	159	157	154	152	150	148	145	143	141	139	136	134	132	129	122
26	158	156	155	152	150	147	146	143	141	139	137	134	132	130	128	126	124	121
28	143	142	141	140	138	135	134	131	129	127	125	123	121	119	117	115	113	111
30	131	129	129	127	126	124	123	121	119	117	115	113	111	109	108	106	104	102
34	110	109	108	107	106	105	104	103	101	99.8	98.6	96.5	94.9	92.9	91.7	89.6	88	86
38	94.3	93.3	92.7	91.5	90.6	89.4	88.8	87.5	86.6	85.4	84.5	82.6	81.1	79.2	78.1	76.2	74.7	72.8
42	80	79.1	78.8	77.8	77.2	76.2	75.8	74.8	73.9	72.7	72.1	70.9	69.6	67.8	66.8	64.9	63.6	61.7
46	68.5	67.5	67.2	66.2	65.6	64.5	64.2	63.2	62.5	61.5	61.1	60	59.4	58.2	57.2	55.4	54.1	52.3
50	59	58	57.7	56.6	56	55	54.6	53.6	52.9	51.8	51.5	50.4	49.7	48.6	48.3	47.1	46	44.3
54	51	50	49.7	48.6	48	46.9	46.6	45.5	44.8	43.7	43.4	42.3	41.6	40.5	40.1	39	38.3	37.2
58	44.2	43.2	42.9	41.8	41.1	40.1	39.7	38.6	38	36.9	36.5	35.4	34.7	33.6	33.2	32	31.3	30.2
62	38.3	37.3	37	35.9	35.2	34.2	33.8	32.7	32	30.9	30.6	29.4	28.7	27.6	27.2	26.1	25.4	24.2
66	33.2	32.2	31.8	30.8	30.1	29	28.7	27.6	26.9	25.8	25.4	24.2	23.5	22.4	22	20.9	20.1	19
70	28.7	27.7	27.3	26.2	25.6	24.5	24.1	23	22.3	21.2	20.8	19.7	19	17.9	17.4	16.3	15.6	14.4

(以XGC11000_SLB-TS4 超起工况风电副臂【变形臂】165+12为例) 共30辆车

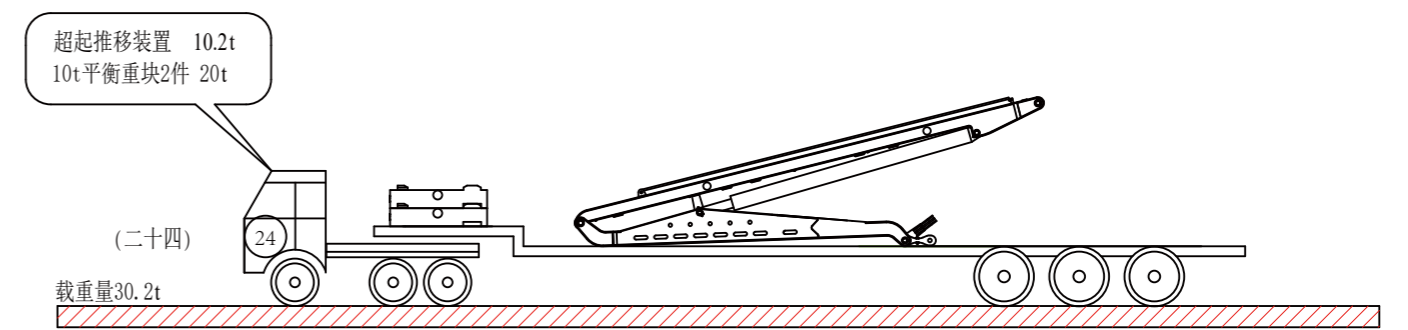
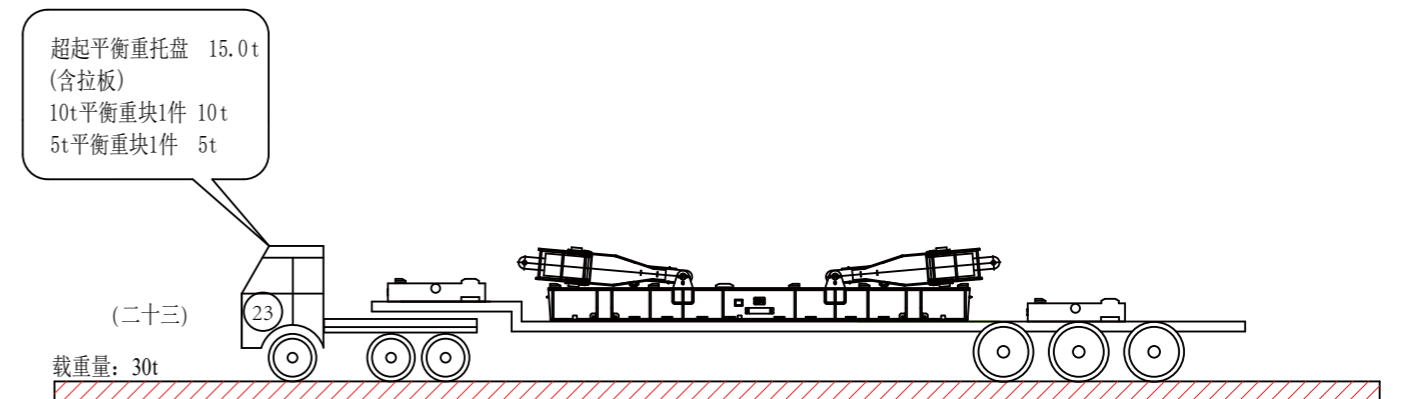
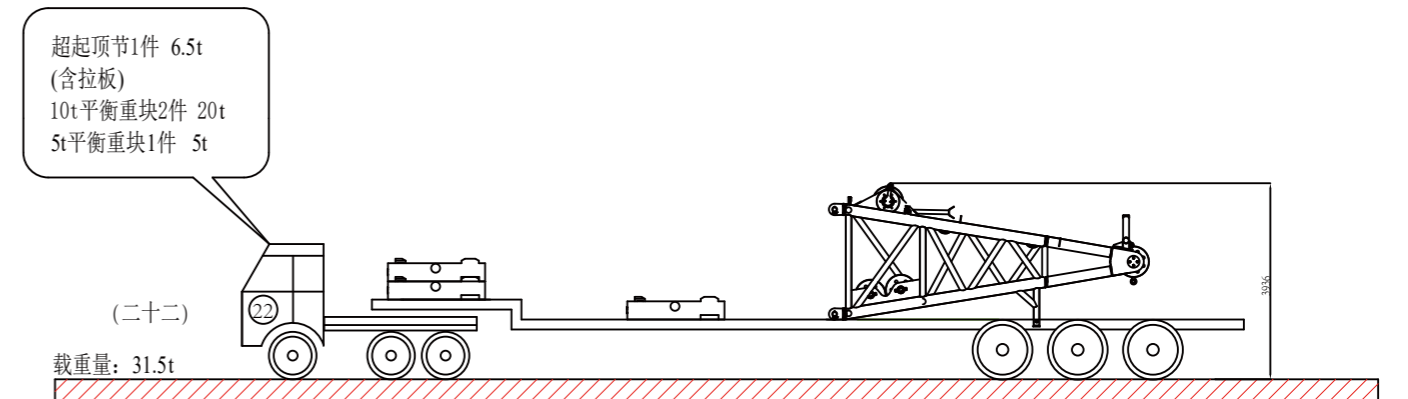
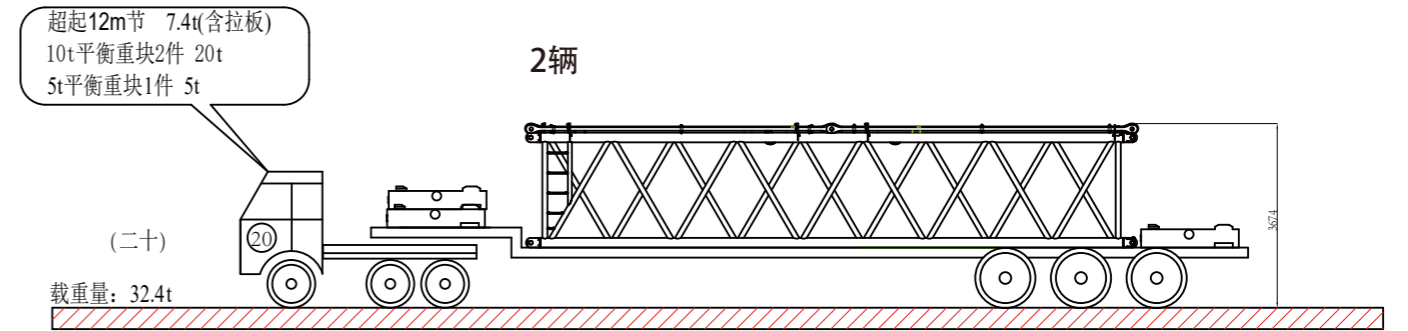
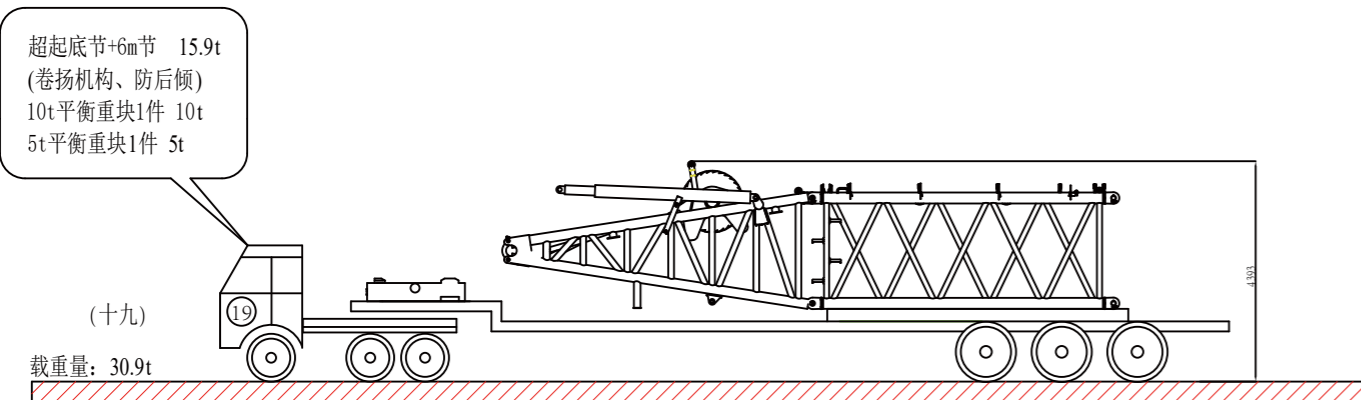
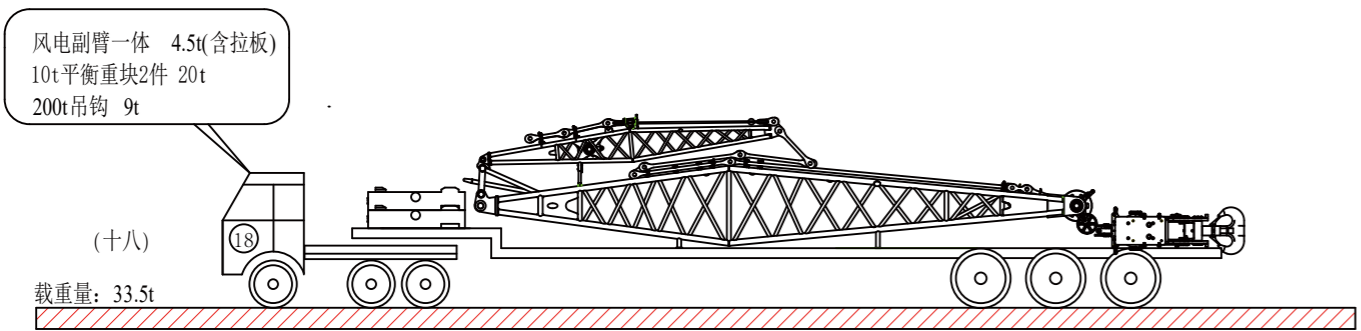
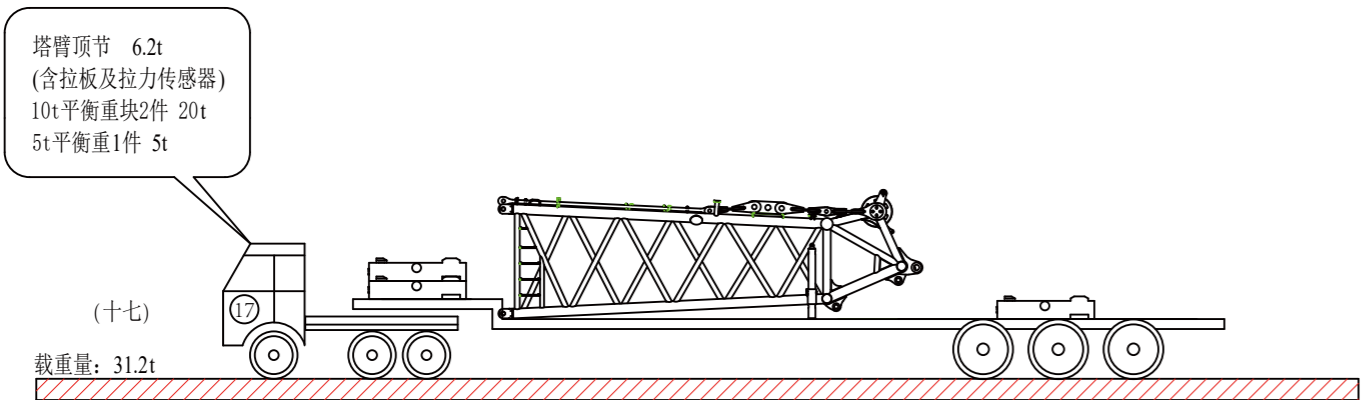
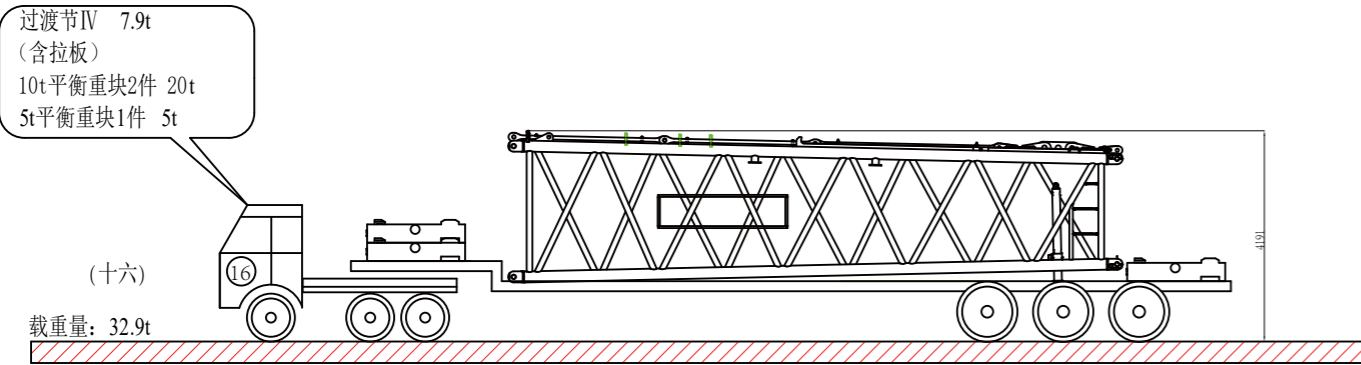
(Take XGC11000_SLB-TS4 SL working condition wind power jib [transformed] 165+12 as an example) total 30 trailers.



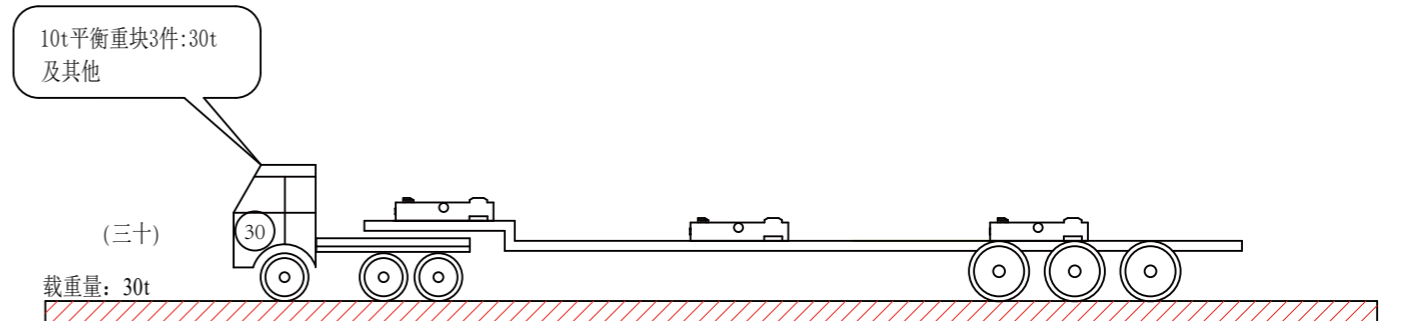
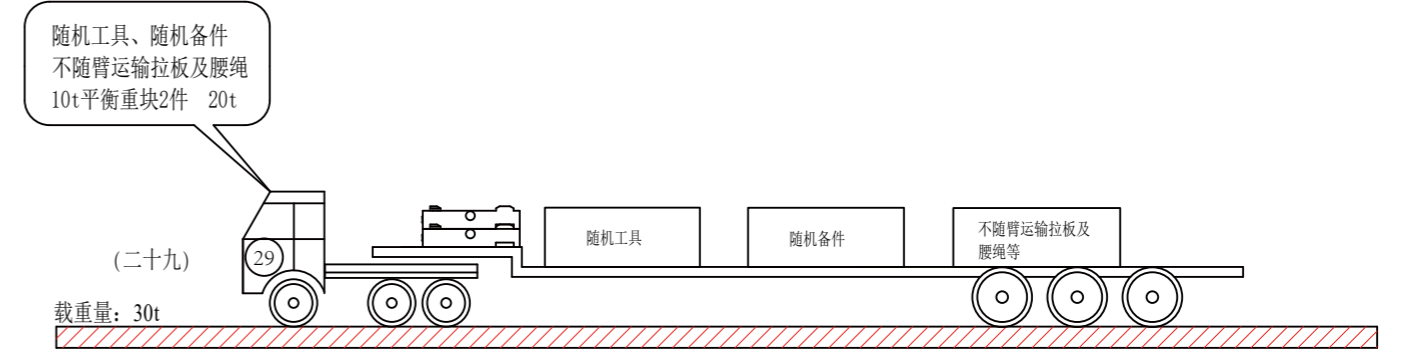
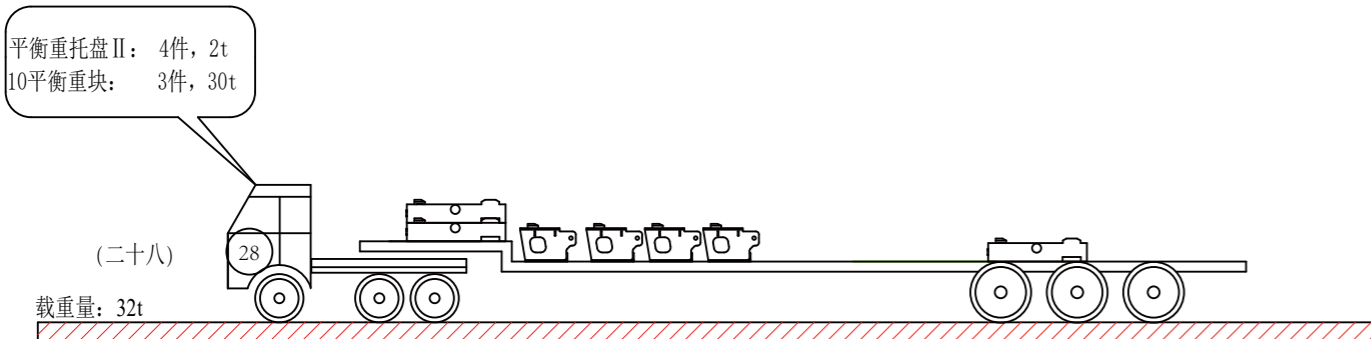
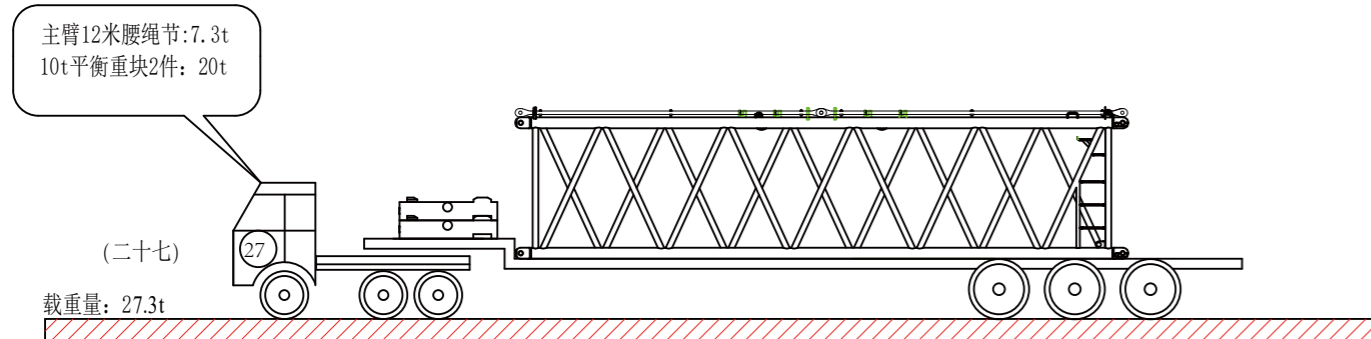
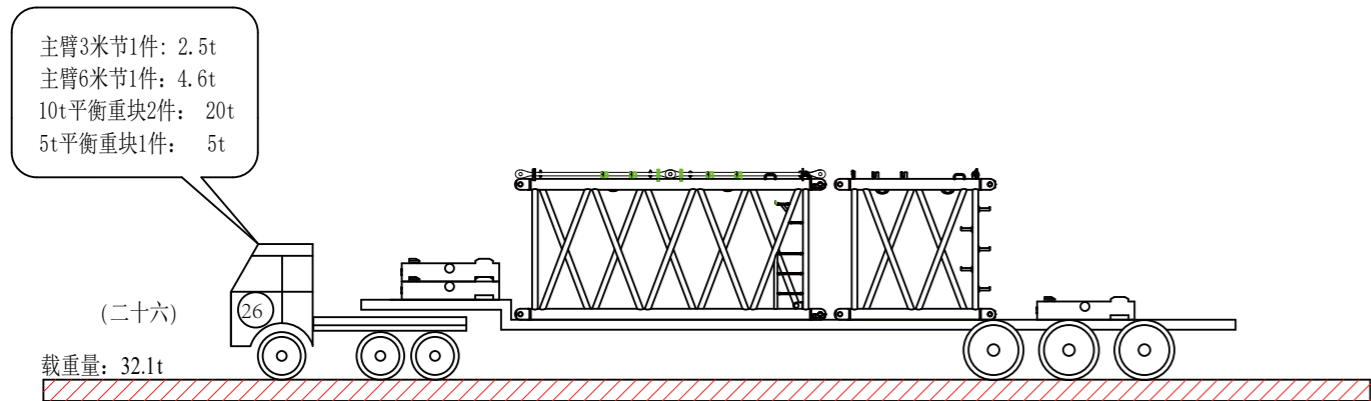
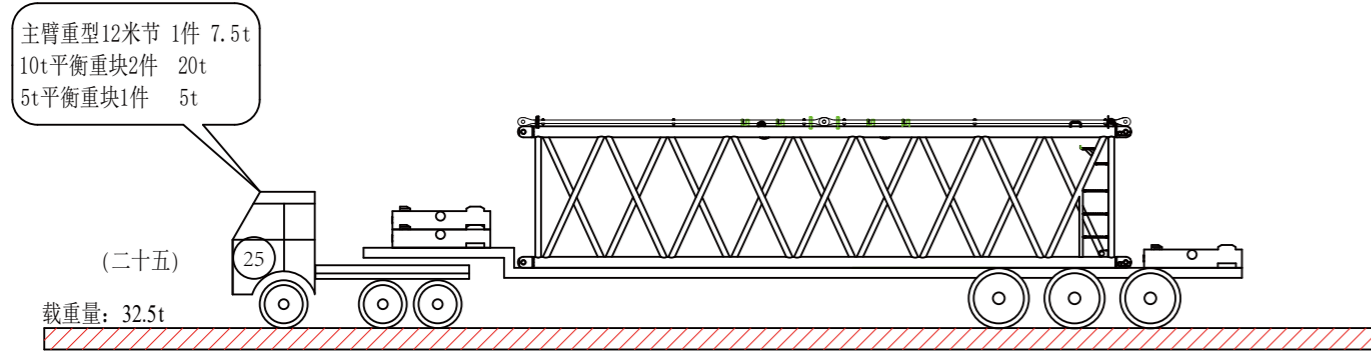
运输方案
Transport plan



运输方案
Transport plan



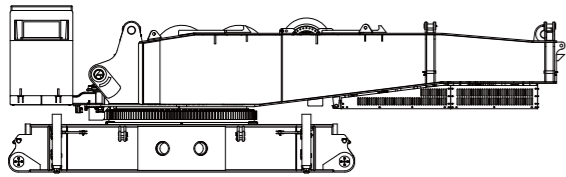
运输方案
Transport plan



注释: 运输车辆只为示意, 可选用规格与载重量类似的车辆。

Notes: trailers of which load and specification are similar can be chosen.

运输尺寸
Transport size



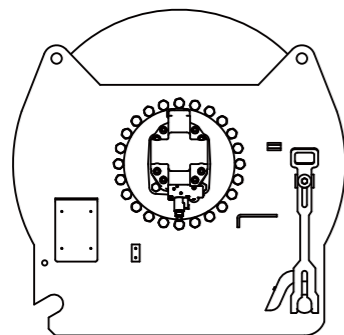
主机 Basic crane	×1
长(L)	12430mm
宽(W)	3460mm
高(H)	3450mm
重量(W)	70000kg



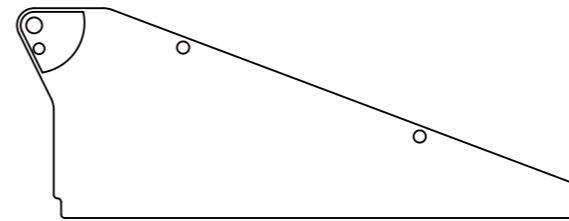
履带梁 Crawler track	×2
长(L)	12400mm
宽(W)	180mm
高(H)	1730mm
重量(W)	45000kg



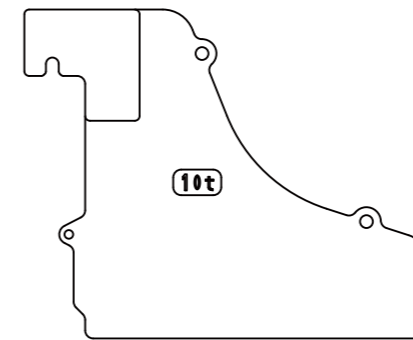
桅杆总成 Mast assembly	×1
长(L)	13170mm
宽(W)	2250mm
高(H)	1510mm
重量(W)	15430kg



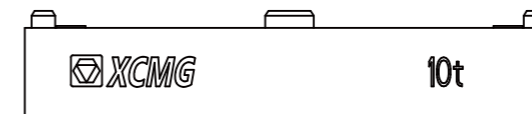
起升机构 Hoisting mechanism	×2
长(L)	2080mm
宽(W)	1260mm
高(H)	1240mm
重量(W)	6700kg



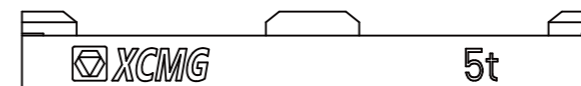
车身平衡重箱 Car-body counterweight box	×2
长(L)	2335mm
宽(W)	1440mm
高(H)	910mm
重量(W)	12500kg



上车平衡重箱 Superstructure counterweight box	×2
长(L)	2545mm
宽(W)	2520mm
高(H)	2140mm
重量(W)	10000kg

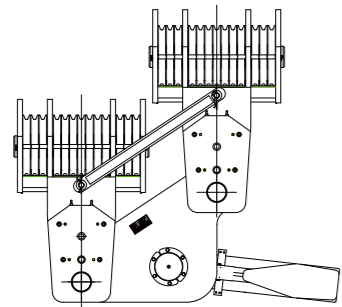


10t平衡重块 10t Counterweight block	×50
长(L)	2180mm
宽(W)	1950mm
高(H)	510mm
重量(W)	10000kg

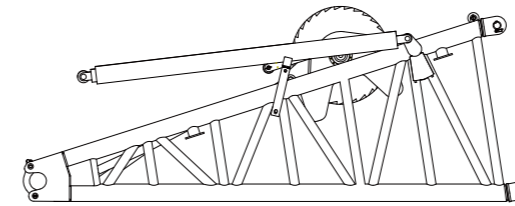


5t平衡重块 5t counterweight block	×9
长(L)	2180mm
宽(W)	1950mm
高(H)	510mm
重量(W)	5000kg

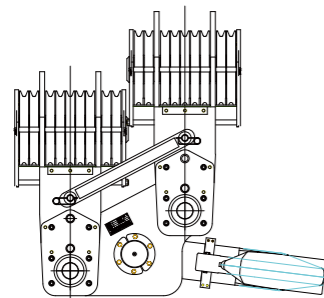
运输尺寸
Transport size



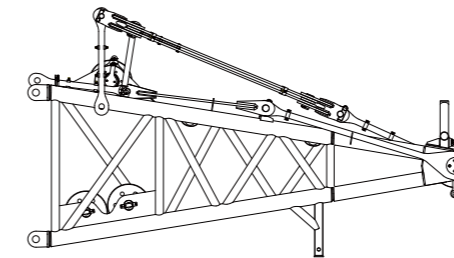
700t吊钩 700t hook block	×1
长(L)	3210mm
宽(W)	1685mm
高(H)	2880mm
重量(W)	13100kg



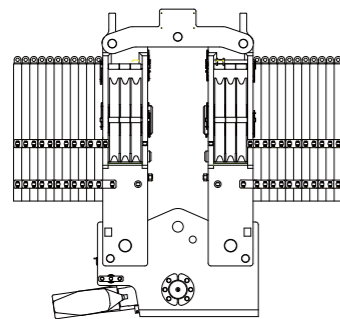
超起底节臂总成 SL boom butt	×1
长(L)	6390mm
宽(W)	3000mm
高(H)	2460mm
重量(W)	13600kg



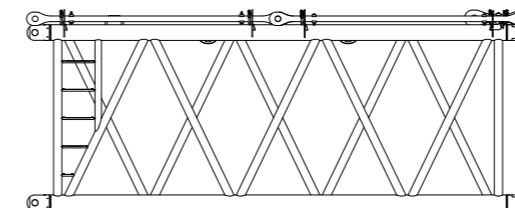
500t吊钩 500t hook block	×1
长(L)	2113mm
宽(W)	1685mm
高(H)	2880mm
重量(W)	12000kg



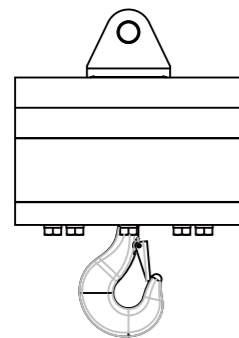
超起顶节臂总成 SL top section assembly	×1
长(L)	6430mm
宽(W)	3280mm
高(H)	3460mm
重量(W)	8840kg



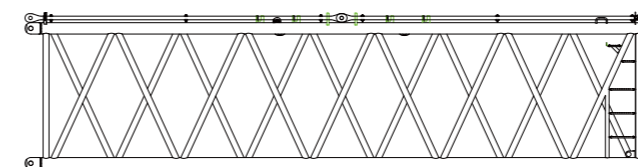
200t吊钩 200t hook block	×1
长(L)	2500mm
宽(W)	1000mm
高(H)	2300mm
重量(W)	9000kg



超起6米节臂 SL 6m section	×1
长(L)	6200mm
宽(W)	3320mm
高(H)	2470mm
重量(W)	4200kg

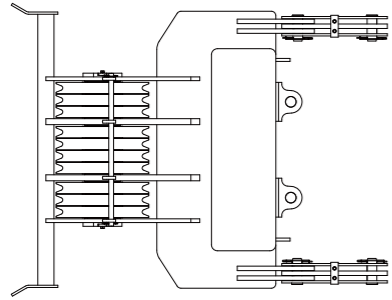


16t吊钩 16t hook block	×1
长(L)	1200mm
宽(W)	700mm
高(H)	700mm
重量(W)	1500kg

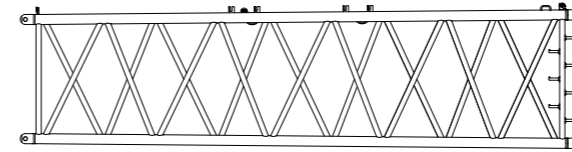


超起12米节臂 SL 12m section	×2
长(L)	12200mm
宽(W)	3320mm
高(H)	2470mm
重量(W)	8700kg

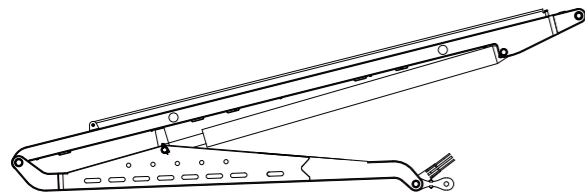
运输尺寸
Transport size



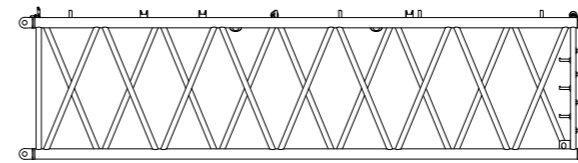
超起变幅滑轮组 SL luffing pulley lock	×1
长(L)	2500mm
宽(W)	1960mm
高(H)	710mm
重量(W)	3000kg



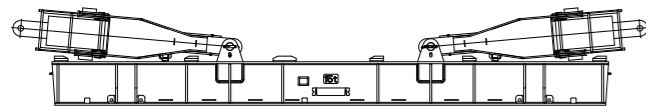
主臂12米过渡节I Main boom 12m transition section I	×1
长(L)	12230mm
宽(W)	3720mm
高(H)	3220mm
重量(W)	9560kg



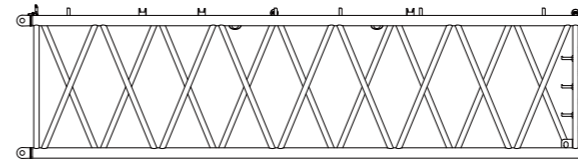
超起平衡重变幅装置 SL counterweight luffing device	×1
长(L)	9430mm
宽(W)	3370mm
高(H)	3000mm
重量(W)	10200kg



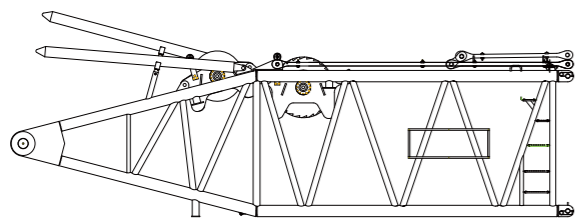
主臂重型12米节 Main boom heavy duty 12m section	×1
长(L)	12230mm
宽(W)	3720mm
高(H)	3220mm
重量(W)	10200kg



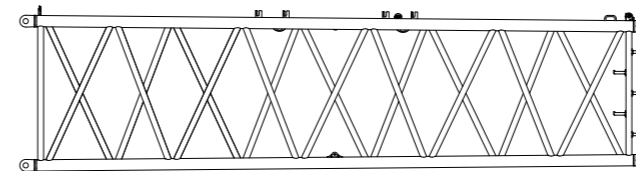
超起平衡重托盘 I SL counterweight tray I	×1
长(L)	9700mm
宽(W)	2180mm
高(H)	1500mm
重量(W)	15000kg



主臂12米中间节 Main boom 12m insert section	×4
长(L)	12230mm
宽(W)	3720mm
高(H)	3220mm
重量(W)	8500kg

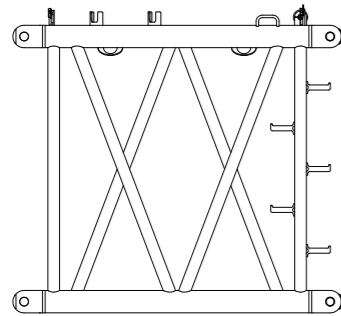


主臂底节 Main boom butt	×1
长(L)	10850mm
宽(W)	3070mm
高(H)	3280mm
重量(W)	20900kg



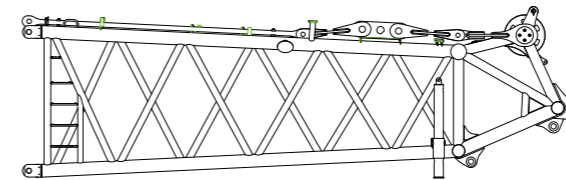
主臂12米过渡节II Main boom 12m transition section II	×1
长(L)	12230mm
宽(W)	3720mm
高(H)	3220mm
重量(W)	7900kg

运输尺寸
Transport size



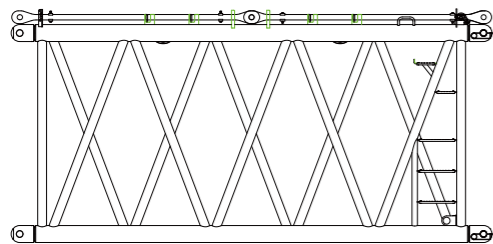
主臂3米节
Main boom 3m section ×1

长(L)	3200mm
宽(W)	3070mm
高(H)	3020mm
重量(W)	2500kg



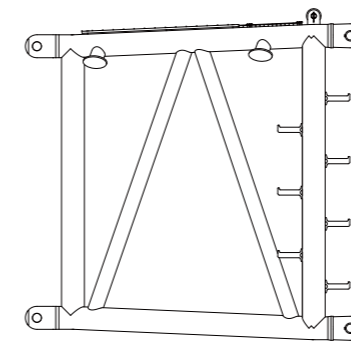
塔臂TB7.5A-T
Tower jib TB7.5A-T ×1

长(L)	8520mm
宽(W)	3070mm
高(H)	3020mm
重量(W)	6200kg



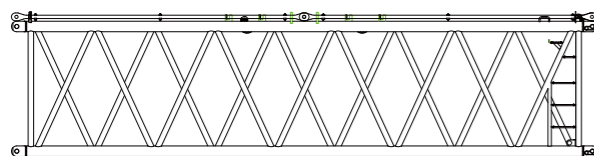
主臂6米节
Main boom 6m section ×1

长(L)	6200mm
宽(W)	3070mm
高(H)	3020mm
重量(W)	4600kg



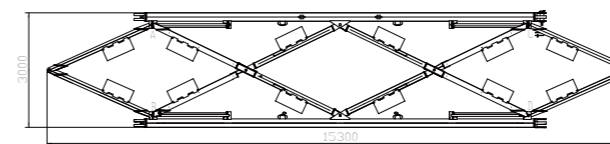
主臂3米连接节I
Main boom 3m connection section I ×1

长(L)	5240mm
宽(W)	3230mm
高(H)	3220mm
重量(W)	6200kg



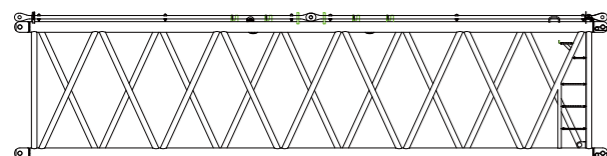
主臂重型12米节A
Main boom heavy duty 12m section A ×1

长(L)	12200mm
宽(W)	3070mm
高(H)	3020mm
重量(W)	7800kg



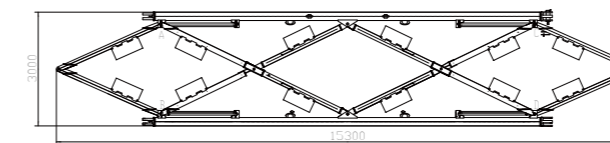
主臂10.5变形臂I
Main boom 10.5m transformed I ×2

长(L)	15300mm
宽(W)	3000mm
高(H)	3220mm
重量(W)	12000kg



主臂12米腰绳节B
Main boom 12m center hitch section B ×1

长(L)	12200mm
宽(W)	3070mm
高(H)	3020mm
重量(W)	7350kg



主臂10.5变形臂II
Main boom 10.5 transformed II ×2

长(L)	15300mm
宽(W)	3000mm
高(H)	3220mm
重量(W)	10500kg

