

徐工徐工 助您成功
XCMG FOR YOUR SUCCESS



XGC500-I 履带起重机

CRAWLER CRANE



地址(Add): 中国江苏省徐州市金山桥经济开发区桃山路19号 邮编(Postal Code): 221004
No.19 Taoshan Road, Economic development zone of jinshanqiao, Xuzhou, Jiangsu Province, China
统一服务热线(Unified service hotline): 86 400-110-9999

销售热线Sales Hotline	服务热线Service Hotline
销售电话(Sale Tel): 86 0516-87892094	服务电话(Service Tel): 86 400-001-5678
销售传真(Sale Fax): 86 0516-87892074	服务传真(Service Fax): 86 0516-87892080
电子邮件(E-mail): jjyxd@xcmg.com	备件电话(Service Tel): 86 0516-87892086
服务质量投诉电话 (Quality Supervision Tel): 86 0516-87892587	备件传真(Service Fax): 86 0516-87892083



欢迎访问徐工商城
省心更省钱一站式



欢迎关注徐工履带起重机官方微信
1. 直接扫码“XCMG_xgji”增加好友
2. 查找公众账号“徐工履带起重机”
3. 直接扫描上方二维码

—2021年01月版—

注: 出于产品不断改进的需要, 我们保留对产品型号、参数、配置进行变更的权力, 恕不另行通知。



CONTENTS

目录

P03	• 产品的部件和系统描述 Product component and system description
P08	• 安全保护措施 Safety Protection Measures
P10	• 配套件明细表 Main parts list
P11	• 主要技术参数 Main Technical Parameters
P14	• 典型工况起重性能表 Lifting capacity table in typical working conditions
P50	• 运输明细表及运输方案 Transport list and transport plan
P60	• 随机工具 Supplied Tools
P61	• 随机备件 Supplied spare parts
P63	• 装箱单 Packing list

02

XGC500-I履带起重机 XGC500-I CRAWLER CRANE

- 产品亮点
Product Highlights
- 安全保护措施
Safety Protection Devices
- 配套件明细表
Main Parts List
- 主要技术参数
XGC11000 Crawler Crane Main Technical Specifications
- 典型工况载荷表
Load charts of typical working conditions

产品的部件和系统描述 Product component and system description

臂架组合方式 / Boom combinations

XGC500-I履带起重机的臂架为高强度无缝钢管作为弦管和腹管，辅以高强度钢板分段焊接成中间等截面，两端变截面的四弦管空间桁架结构。

The boom sections of XGC500-I crawler crane use high-strength seamless pipe as the chords and lacing members, supplemented by four-chord lattice structure which is welded by high strength steel plate, with equal section in the middle and variable section at two ends.

标准工况 / Standard working condition

HB-S: 重型主臂, 主臂长 24~81(87), 组成: 10.5 米主臂底节 ×1, 12 米大截面过度节 ×1, 12 米大截面轻型节 ×1, 12 米大截面上过度节 ×1, 12 米加强标准节 ×1, 6 米标准节 ×2, 12 米重型过渡节 ×1, 1.5 米臂头 ×1。

HW-S: 塔式副臂, 主臂长 24~60 米时可安装塔式副臂 24 ~ 72 米, 塔式副臂组成: 10.5 米塔式副臂底节 ×1, 6 米塔式副臂厚壁中间节 ×3, 12 米塔式副臂厚壁中间节 ×1, 12 米塔式副臂薄壁中间节 ×2, 7.5 米塔式副臂顶节 ×1。

HJ: 风电副臂, 主臂长度为 72 ~ 90 米, 风电副臂 12 米, 组成: 10.5 米主臂底节 ×1, 6 米标准节 ×2, 12 米加强标准节 ×1, 12 米主臂重型标准节 ×1, 12 米主臂轻型标准节 ×3, 12 米重型过渡节 ×1, 3 米标准节 ×1, 7.5 米风电顶节 ×1, 风电副臂为 12 米 ×1。

HF: 盾构副臂, 主臂长度 24 ~ 30 米, 副臂长度 9 ~ 12 米。

HB-S: Heavy boom, boom length 24~81m (87m), composition: 10.5m boom butt×1, 12m boom transition section×1 (large cross section), 12m light boom insert ×1 (large cross section), 12m upper boom transition section×1 (large cross section), 12m strengthened boom insert ×1 (standard section), 6m boom insert ×2 (standard section), 12m heavy boom transition section ×1, 1.5m boom head ×1.

HW-S: tower jib, boom length 24~60m, tower jib length 24~72m, tower jib composition: 10.5m tower jib butt×1, 6m thick-wall tower jib insert ×3, 12m thick-wall tower jib insert×1, 12m thin-wall tower jib insert×1, 7.5m tower jib top ×1.

HJ: wind power jib, boom length 72 ~ 90m, wind power jib 12m, composition: 10.5m boom butt×1, 6m boom insert ×2 (standard section), 12m heavy boom insert ×1 (standard section), 12m light boom insert ×3 (standard section), 12m heavy boom transition section ×1, 3m boom insert×1 (standard section), 7.5m wind power jib top ×1. Wind power jib is 12m×1.

HF: TBM jib, boom length 24 ~ 30m, TBM jib 9~12m.

超起工况 / Superlift working condition

SHB-S: 重型主臂, 主臂长 36~123, 组成: 10.5 米主臂底节 ×1, 12 米大截面过度节 ×1, 12 米大截面重型节 ×2, 12 米大截面轻型节 ×2, 12 米大截面上过度节 ×1, 12 米加强标准节 ×1, 6 米标准节 ×2, 12 米重型过渡节 ×1, 1.5 米臂头 ×1。

SHW-S: 塔式副臂, 主臂长 30~84 米时可安装塔式副臂 24 ~ 84 米, 塔式副臂组成: 10.5 米塔式副臂底节 ×1, 6 米塔式副臂厚壁中间节 ×3, 12 米塔式副臂厚壁中间节 ×1, 12 米塔式副臂薄壁中间节 ×3, 7.5 米塔式副臂顶节 ×1。

SHJ-S: 风电副臂, 主臂可选长度 90 ~ 126 米, 风电副臂 12 米, 组成: 10.5 米主臂底节 ×1, 12 米大截面过度节 ×1, 12 米大截面重型节 ×2, 12 米大截面轻型节 ×2, 12 米大截面上过度节 ×1, 12 米加强标准节 ×1, 6 米标准节 ×2, 12 米重型过渡节 ×1, 3 米标准节 ×1, 7.5 米风电顶节 ×1, 12 米风电副臂总成 ×1。

SHF: 盾构副臂, 主臂长度 36 米, 副臂长度 9 ~ 12 米。

SHB-S: heavy boom, boom length 36 ~ 123m, composition: 10.5m boom butt×1, 12m boom transition section×1 (large cross section), 12m light boom insert ×1 (large cross section), 12m upper boom transition section×1 (large cross section), 12m strengthened boom insert ×1 (standard section), 6m boom insert ×2 (standard section), 12m heavy boom transition section ×1, 1.5m boom head ×1.

SHW-S: tower jib, when boom length is 30~84m, tower jib is 24~84m, tower jib composition: 10.5m tower jib butt×1, 6m thick-wall tower jib insert ×3, 12m thick-wall tower jib insert×1, 12m thin-wall tower jib insert×1, 7.5m tower jib top ×1.

SHJ-S: wind power jib, boom length 90 ~ 126m, wind power jib length 12m, composition: 10.5m boom butt×1, 12m boom transition section×1 (large cross section), 12m heavy boom insert×2 (large cross section), 12m light boom insert ×2 (large cross section), 12m upper boom transition section×1 (large cross section), 12m strengthened boom insert ×1 (standard section), 6m boom insert ×2 (standard section), 12m heavy boom transition section ×1, 3m boom insert ×1 (standard section), 7.5m wind power jib top ×1, 12m wind power jib assembly ×1.

SHF: TBM jib, boom length 36m, TBM jib length 9~12m.

转台 / Turntable

转台为箱框结构，由高强度钢板焊接。整体结构型式为大箱形框架等强度结构，两侧工字形主立板用箱形梁进行左右联接。此结构整体抗弯、抗扭能力强，稳定性好，同时转台内空间大，便于保养及维护。转台通过回转支承与下车联接。转台上安装有操纵室、主变幅机构、主副起升机构、发动机、桅杆、转台平衡重及臂架系统等重要部件。

Turntable is a box frame structure and welded by high strength steel plate. The overall structure is a large box frame with equal strength, the I-shaped main vertical plates at left and right sides are connected with box beam. This structure is with strong bending and torsion resistance and good stability. At the same time, the space in turntable is large, which is convenient for crane maintenance. Turntable is connected to undercarriage through slewing bearing. Many important parts are installed on turntable, such as operator's cab, main luffing winch, main and aux. hoist winches, engine, mast, turntable counterweight and boom system.

拉板 / Pendant

采用高强度拉板结构，由两组拉板构成。拉板由高强度钢一次切割成型，安全系数高。拉板配有平衡梁，能有效平衡两组拉板载荷，使其受力均匀。

High strength pendant structure, it is composed of two groups of pendant. The pendant is made of high strength steel with high safety factor. The pendant is equipped with a balance beam, which can effectively balance the load on the two pendant groups, so that the force is uniform.

桅杆 / Mast

标准型桅杆采用双肢箱型结构，具有良好的整体稳定性。配置有桅杆顶升机构，桅杆安装动力销。配置有辅助吊装油缸，用于履带架、中央平衡重、主臂的自拆装功能。桅杆可与主变幅机构一体运输。

超起型桅杆采用高强度无缝钢管作为弦管和腹管，辅以高强度钢板分段焊接成中间等截面，两端变截面的四弦管空间桁架结构。超起桅杆长度 30 米，含底节臂一件，6 米节一件，12 米节一件，顶节臂一件。超起桅杆配置液压自动控制防后倾机构。

Superlift mast uses high strength seamless pipe as the chord and lacing members, supplemented by four-chord lattice structure which is welded by high strength steel plate, with equal section in the middle and variable section at two ends. The length of superlift mast is 30m, including one bottom section, one 6m section, one 12m section and one top section. The superlift mast is equipped with automatically controlled hydraulic backstop device.

机构组成 / Mechanism composition

本机的机构配置及用途如下表。

See the following table for the configuration and use of the mechanisms of the crane.

序号 No.	机构名称 Mechanism name	用途 Use	布置位置 Position
1	主起升机构 Main hoist winch	主臂、副臂、塔臂时起升作业 Used for the lifting operation of boom, fixed jib and tower jib	转台 Turntable
2	副起升机构 Aux. hoist winch	主臂、副臂、塔臂时起升作业 Used for the lifting operation of boom, fixed jib and tower jib	转台 Turntable
3	主臂变幅机构 Boom luffing winch	主臂变幅作业 Used for boom luffing operation	转台中后方 Middle and rear part of turntable
4	塔臂变幅机构 Tower jib luffing winch	塔臂变幅作业、单滑轮起升作业 Used for tower jib luffing operation and single top lifting operation	主臂底节臂
5	超起变幅机构 Superlift luffing winch	超起主臂变幅作业 Used for superlift boom luffing operation	超起桅杆底节 Boom base
6	回转机构 Slewing gear	上车回转 Used for superstructure slewing	转台前方 Turntable front part
7	行走机构 Travel gear	整机行走 Used for crane travel	履带梁 Crawler track
8	穿绳机构 Reeving winch	辅助穿绕钢丝绳 Assist the reeving of wire rope	转台前方 Turntable front part
9	第三起升机构 The third hoist winch	盾构副钩作业 Used for TBM jib aux. hook	选配、主臂底节臂 Optional, boom base

产品的部件和系统描述 Product component and system description

起升机构 / Hoist winch

主、副起升机构型号相同，单独驱动，双泵合流供油，内藏式减速机，片式常闭制动器。专用防乱绳卷筒，不扭转钢丝绳。单滑轮起升机构与主副起升机构型号相同。

主起升机构，单绳拉力 17.2t，钢丝绳直径 ϕ 28 mm，长度 820m；

副起升机构，单绳拉力 17.2t，钢丝绳直径 ϕ 28 mm，长度 820m；

Main and aux. winches have the same model and driven independently, the two pumps are combined for oil supply. Hoist winches adopt built-in reducer, constant-closed disc brake, anti rope disorder cable drum and anti-rotation wire ropes. Boom single top hoist winch model is the same as that of main/aux. hoist winches.

For main hoist winch, single line pull is 17.2t, rope diameter is ϕ 28 mm, and rope length is 820m;

For aux. hoist winch, single line pull is 17.2t, rope diameter is ϕ 28 mm, and rope length is 820m;

变幅机构 / Luffing winch

主臂变幅机构采用双联卷筒形式。采用棘轮锁止装置，内藏式减速机，片式常闭制动器。

单绳拉力 2*18t，钢丝绳直径 ϕ 26 mm，长度 540m。

塔臂变幅设有棘轮锁止装置、内藏式减速机，片式常闭制动器。

单绳拉力 18t，钢丝绳直径 ϕ 26 mm，长度 620m。

超起变幅机构采用棘轮锁止装置，内藏式减速机，片式常闭制动器。

单绳拉力 18t，钢丝绳直径 ϕ 26 mm，长度 770m。

Boom luffing winch is twin drum form, with ratchet lock device, built-in reducer and constant-closed disc brake.

Single line pull is 2*18t, rope diameter is ϕ 26 mm, rope length is 540m.

Tower jib luffing winch is set with ratchet lock device, built-in reducer and constant-closed disc brake.

Single line pull is 18t, rope diameter is ϕ 26 mm, and rope length is 620m.

Superlift luffing winch is set with ratchet lock device, built-in reducer and constant-closed disc brake.

Single line pull is 18t, rope diameter is ϕ 26 mm, and rope length is 770m.

回转机构 / Slewing gear

布置在转台前方，采用两个行星减速机，与回转支承外啮合，液压缓冲，具有自由滑转功能。采用片式常闭制动器，工作可靠，维修方便。

Slewing gear is arranged in front of turntable, two planetary reducers are used to make it externally meshed with slewing bearing, with hydraulic buffering and free swing function. Constant-closed disc brake is used; it is reliable in work and easy for maintenance.

回转支承 / Slewing bearing

采用三排滚柱式外啮合回转支承，强度高、承载力巨大，维修、保养方便。

The three-row roller type slewing bearing are externally meshed, with features of high strength, large bearing torque and easy maintenance.

油缸总成 / Oil cylinder assembly

臂架与转台的连接、车架与履带梁的连接、起升机构安装、主变幅机构安装均采用液压动力销连接方式，并配置了桅杆顶升油缸、桅杆吊油缸、车架支腿油缸、履带板张紧油缸等。操纵室设有翻转油缸和旋转油缸。

The three-row roller type slewing bearing are externally meshed, with features of high strength, large bearing torque and easy maintenance.

操纵室 / Operator's cab

操纵室采用钢制框架结构，正面配置有整体式夹层玻璃，其余玻璃均为钢化玻璃，装有可调式座椅、按人机工程学布置的全套操纵仪表和控制装置，配置冷暖空调（风道式）、音响、灭火装置、闭路监视系统等，宽敞舒适。

工作时，操纵室可调整俯仰角度，扩大视野，方便操作；运输时，操纵室可从侧方转到前方，减小运输宽度，方便运输。

Operator's cab is steel frame structure. The front is equipped with integral laminated glass, while others are tempered glass. The cab is equipped with adjustable seat, all kinds of ergonomic designed instruments and controls, vent type air conditioner, stereo, fire extinguisher, and closed circuit monitoring system, spacious and comfortable.

When the crane is in operation, the cab can be tilted upward to widen the field of vision. When the crane is in transport, the cab can be turned to the front side to reduce the transport width.

车架 / Car-body

车架采用高强度钢板、箱形结构，中间设置横隔板，加强其抗扭刚度，结构简单，承载能力强，刚性好。

Car-body is made of high strength steel plate and welded in box type structure. Cross panel is set in the middle to strengthen its torsion stiffness, simple structure, high load bearing capacity and good rigidity.

履带行走装置 / Crawler travel unit

包括履带梁和四轮一带。履带梁采用箱型结构，与车架连接部位局部加强，中间设置横隔板。四轮一带均采用高强度合金铸钢制造。

两个履带梁对称设置，装有宽度为 1.2m 的履带板，可同步操作，也可单独操纵，以实现直行和转弯。四驱行走减速机驱动，采用内藏式行星齿轮减速机，变量马达驱动。

Crawler track consists of crawler beam, drive sprocket, idler, upper roller, lower roller and track shoe. Crawler beam is box-shape structure, its connection part with car-body is strengthened partially, and cross panel is installed in the middle of it. The rollers and track shoes are all made of high strength alloy cast steel.

The two track frames are set symmetrically, installed with crawler shoes of 1.2m in width. They can be operated synchronously or separately to realize straight travel and turning. Four-wheel-drive travel reducer, built-in planetary gear reducer and variable displacement motor drive.

液压系统 / Hydraulic system

采用开闭式相结合、电比例先导变量泵控系统，系统稳定，速度精调特性好。起升、变幅、行走为开式泵控系统，主变幅具有双泵合流功能。

回转采用闭式泵控系统，配有专用回转缓冲阀，传动平稳无冲击。

对于调速范围大的主副起升和行走机构，采用变量马达驱动。变量马达 + 变量泵控系统，可以对运动速度实现精确调控，具有良好的微动性。

It adopts electric proportional pilot variable pump control system, with combination of open and closed circuit, the system is stable with good speed adjustment.

Hoist system, luffing system and travel system are all open pump control systems, main luffing system is with dual pump confluence function.

Slewing system is closed pump control system, with a special slewing buffer valve; the transmission is stable without impact.

For main hoist, aux. hoist and travel systems with large speed regulation range, variable motor drive is adopted. The combination of variable motor and variable pump control system can achieve accurate control of the movement speed, with good fine motion performance.

电气系统 / Electrical system

电气系统主要包括如下部分：发动机控制、监测仪表、辅助设备、液压系统控制、力矩限制及安全监控等。

电气系统的构成：常规电气系统和 PLC 控制系统。

常规电气系统采用 24V 并联式回路，各用电设备的接线采用单线制，负极搭铁。包括电源、起动机控制、发动机控制和状态监测、驾驶室冷暖空调及音响、照明（灯光）、雨刮器、对讲机等。

PLC 控制系统包括起升、变幅、回转、行走及操纵室旋转、翻转等动作的控制。所有动作全部采用电液比例控制技术，通过 PLC 逻辑控制，有效地保证主机所有功能的实现。

Crawler track consists of crawler beam, drive sprocket, idler, upper roller, lower roller and track shoe. Crawler beam is box-shape structure, its connection part with car-body is strengthened partially, and cross panel is installed in the middle of it. The rollers and track shoes are all made of high strength alloy cast steel.

The two track frames are set symmetrically, installed with crawler shoes of 1.2m in width. They can be operated synchronously or separately to realize straight travel and turning. Four-wheel-drive travel reducer, built-in planetary gear reducer and variable displacement motor drive.

发动机系统 / Engine system

型号：奔驰 OM460LA；

额定功率：360 kW/1800rpm；

最大扭矩 / 最大扭矩转速：2200Nm/130rpm；

型式：直列六缸、水冷、涡轮增压、中冷、电喷、四冲程柴油发动机；

环保性：符合欧Ⅲ标准或国Ⅲ标准；

燃油箱容量：850L。

Model: Benz OM460LA;

Rated power: 360 kW/1800rpm;

Max. torque/max. torque speed: 2200Nm/130rpm;

Structure type: 6-cylinder in line, water-cooling, turbocharged and inter-cooled, and electronic injection, four-stroke diesel engine;

Emission standard: comply with the standard of Euro III or China III;

Fuel tank capacity: 850L.

产品的部件和系统描述 Product component and system description

平衡重 / Counterweight

平衡重包括车身平衡重、转台平衡重、超起平衡重。

车身平衡重安装在车架前后,重为 11.3 吨的配重箱中,可用桅杆吊实现自拆装,共 42.6t,组成如下: 车身配重 2×10t+2×11.3t。

转台平衡重安装在转台侧后方,提供 160t、180 两种配置,组成如下:

(1)160t: 平衡重托盘 2×10t,平衡重块 14×10t;

(2)180t: 平衡重托盘 2×10t,平衡重块 16×10t;

超起平衡重,共 270t,组成如下:

超起平衡重托盘 1×10t,平衡重块 26×10t(4 块借用转台平衡重,4 块借用车身平衡重)。

Counterweight system includes car-body counterweight, turntable counterweight and superlift counterweight.

Car-body is installed in the 11.3t counterweight boxes at the front and rear of car-body. Mast derrick is used to realize the self-assembly and disassembly function. Car-body counterweight is 42.6t in total, composition: car-body counterweight 2×10t+2×11.3t.

Turntable counterweights are installed on turntable rear side, two configurations of 160t and 180t are shown as follows:

(1) 160t: counterweight tray 2×10t, counterweight slab 14×10t;

(2) 180t: counterweight tray 2×10t, counterweight slab 16×10t;

Superlift counterweight is 270t in total, the composition is as follows:

Superlift counterweight tray 1×10t, counterweight slab 26×10t (4 counterweight slabs are borrowed from turntable counterweight, 4 counterweight slabs are borrowed from car-body counterweight).

吊钩 / Hook block

吊钩有 6 种,配置如下表:

There are 6 kinds of hook blocks, the configurations are as follows:

名称 Name	500T	400T	260T	200T	50T	16T
1	7.4	6.1	4.6	9	2.8	0.9
2	18	14	9	6	1	0
3	可选 Optional configuration	标配 Standard configuration	标配 Standard configuration	标配 Standard configuration	可选 Standard configuration	可选 Standard configuration

注: 500t 吊钩为组合式吊钩,可以拆成 250t 吊钩;

400t 吊钩为组合式吊钩,可以拆成 200t 吊钩。

200t 吊钩为组合式吊钩,可以拆成 100t 吊钩。

Note: 500t hook is combined hook, which can be disassembled into 250t hook.

400t hook is combined hook, which can be disassembled into 200t hook.

200t hook is combined hook, which can be disassembled into 100t hook.

集中润滑系统 / Centralized lubrication system

采用递进式集中润滑系统,电脑编程控制,能够自动、逐点加注润滑油,保证各润滑点油料充足,使车辆保养更加轻松、方便。

The use of progressive centralized lubrication system is controlled by computer programming. It can add lubricating oil automatically point by point, so as to ensure that each point is lubricated sufficiently and make the maintenance more easy and convenient.

安全保护措施 Safety Protection Measures

本起重机具备以下安全保护功能: 安装 & 工作模式切换功能、紧急停止功能、力矩限制器系统、液压系统安全保护功能、防过卷功能、防过放功能、防误操作功能、棘爪锁止功能、回转锁止功能、臂架防后倾功能、起重臂极限角度限制功能、吊钩防脱钩功能、起升高度限位功能、视频监控功能、声光报警功能、防雷击保护功能。同时,配备了照明灯、后视镜、示高灯、风速仪、水平仪等装置。

The safety protection functions of this crane are as follows: Assembly mode & working mode exchange function, emergency stop function, LMI system, hydraulic system safety protection function, rope over-wind protection function, rope over-release protection function, anti-misoperation function, ratchet locking function, slewing locking function, boom backstop function, boom angle limit function, hook latch, hoist height limit function, video monitoring function, sound and light alarm function, lightning protection function. At the same time, it is equipped with illuminator light, rearview mirror, height mark lamp, anemometer, gradiometer and etc.

安装模式&工作模式切换 / Assembly mode & working mode changeover switch

安装模式下,防过卷装置、起重臂限位装置、力矩限制器等均不起作用,以利于起重机安装;工作模式下,所有安全装置均起作用。

In Assembly mode, over-wind protection device, boom angle limiter and load moment limiter are all out of service, in order to facilitate crane assembly; in working mode, all safety devices work normally.

紧急停止功能 / Emergency stop function

具有紧急停止功能,可在紧急情况下,快速停止所有动作。

This crane has emergency stop function, all crane movements can be stopped quickly in case of emergency.

力矩限制器系统 / LMI system

检测功能: 力矩限制器能自动检测起重臂的角度、起重载荷等参数。

显示功能: 10.4 寸高清液晶显示器,以文字和图形方式显示力矩百分比、实际起重量、额定起重量、幅度、吊臂长度、角度、最大起升高度、工况代码、倍率、限制角度、信息代码等起重作业参数。

警示功能: 具有完整的预先报警、超载停止作业功能。如果检测到实际载荷超过额定载荷,起重臂超过极限角度,力矩限制器发出报警并限制当前动作。

系统具有故障自诊断功能。

Detection function: LMI can automatically detect parameters such as boom angle and lifting weight.

Display function: 10.4-inch high-definition LCD display, show important parameters in lifting operation through text and graphics, such as load moment percentage, actual lifting weight, rated lifting weight, radius, boom length, angle, maximum lifting height, working condition code, parts of line, limit angle and information code.

Warning function: with complete pre-alarm and overload stop function. If it is detected that the actual weight exceeds the rated lifting capacity or boom angle exceeds the maximum value, LMI will send alarm and limit the current movement of the crane.

The system has self-diagnosis function.

液压系统安全保护功能 / Hydraulic system safety protection function

配置液压平衡阀、液压溢流阀等装置,保证系统工作时稳定安全。

Hydraulic system is equipped with hydraulic balance valve, hydraulic relief valve and other devices to ensure the stable and safe work of the system.

防过卷功能 / Rope over-wind protection function

臂头设置过卷装置,防止钢丝绳过卷。当起升到一定高度时候,显示器上的过卷指示灯亮,同时自动停止起升动作。

There is an over-wind protection device on boom head to prevent rope from being over-wound. When lifting to a certain lifting height, the over-wind warning light on display will be on, and load moment limiter will stop the hoisting up movements at the same time.

防过放功能 / Rope over-release protection function

起升机构均设置三圈保护器,避免卷筒放绳时产生过放。当卷扬钢丝绳只剩三圈时,显示器上的过放指示灯亮,同时自动停止下落动作。

Rope end limiter is set on each hoist winch to prevent wire rope from over-releasing. When there are only three loops of rope left on winch, the over-release warning light on display will be on, and the movement of lowering down will be stopped at the same time.

防误操作功能 / Anti-misoperation function

起升机构均设置三圈保护器,避免卷筒放绳时产生过放。当卷扬钢丝绳只剩三圈时,显示器上的过放指示灯亮,同时自动停止下落动作。

Rope end limiter is set on each hoist winch to prevent wire rope from over-releasing. When there are only three loops of rope left on winch, the over-release warning light on display will be on, and the movement of lowering down will be stopped at the same time.

棘爪锁止功能 / Ratchet locking function

具有棘爪锁止装置,用于锁定变幅卷扬,保证臂架在非工作时安全停放。

Ratchet locking device is used to lock the luffing winch so that boom is stopped and placed safely at non-working state.

回转锁止功能 / Slewing locking function

具有回转锁止装置,用于起重机停止时,上车的回转锁定。

Slewing locking device is used to lock superstructure slewing when the crane is stopped.

安全保护措施 Safety Protection Measures

臂架防后倾功能 / Backstop function

主臂、超起桅杆、塔臂及塔臂支架等臂架配置液压防后倾装置，防止臂架的后仰。

Main boom, superlift mast, tower jib and tower jib struts are equipped with backstop devices to prevent boom from tilting backward.

起重臂极限角度限制功能 / Boom angle limit function

工作模式下，主臂变幅至最大工作角度时，由力矩限制器和行程开关双重控制，起臂动作被停止；主臂变幅至最小工作角度时，由力矩限制器控制落臂动作被停止，并发出声音报警。塔臂由角度限位开关控制上限位和下限位。

In working mode, when boom is elevated to the max. working angle, boom raising will be stopped under the control of load moment limiter and hoist limit switch; when boom is elevated to the min. working angle, boom lowering will be stopped under the control of load moment limiter, and a sound warning will be given. The upper and lower limits of tower jib are controlled by angle limit switch.

吊钩防脱功能 / Hook latch

所有起重钩均装有防脱卡板，防止悬挂在起重钩头的吊索脱落。

All lifting hooks are equipped with latch to prevent the suspended rope on the hook head from falling off.

起升高度限位功能 / Hoist height limit function

在起重臂臂头配置悬索式高度限位装置，吊钩起升接触到高度限位装置后，起升动作被停止，避免损坏吊钩钢丝绳。

Suspended height limit device is installed on boom head, when the hook contacts the height limit device, the lifting movement will be stopped to avoid damage to the wire rope.

闭路监控系统 / Closed circuit monitoring system

由摄像头和监视器组成，分别监视起升卷扬、主变幅卷扬、副臂前、后变幅卷扬等。

The system is composed of camera and monitor. It is used to monitor the hoist winches, boom luffing winch, jib luffing winches and etc.

声光报警功能 / Sound and light warning function

具有三色报警灯和声光报警器，可显示车辆负荷及动作状态，进行灯光闪烁并发出声音报警，警示司机及车外人员。

It is equipped with tri-color warning light and audio/video alarm. It can display the load and movement status of the vehicle, flash the lights and send sound alarm to alert the driver and people outside the vehicle.

防雷击保护功能 / Lightning protection function

可选择配备防雷接地系统和浪涌保护器系统，减小控制系统雷击风险。

Lightning protection grounding system and surge protector system are optionally configured for this crane to reduce lightning strike possibility of the control system.

照明灯 / Illuminator light

照明灯装在转台前方、操纵室上方和操纵室内，提供照明。

There are illuminator lights in front of turntable, above the cab and inside the cab for lighting.

后视镜 / Rearview mirror

位于操纵室外侧，便于司机观察机器后方情况。

It is outside the operator's cab so that the driver can observe the situation behind the machine.

示高灯 / Height mark lamp

示高灯安装在臂架顶部，作为高空警示。

It is located on boom tip for high level operation warning.

风速仪 / Anemometer

实时检测当前风速，并传送到操纵室的监视器上，提醒操作者注意风载荷安全。

It can detect the current wind speed and send signal to the monitor in operator's cab to remind the operator for safe operation in wind load.

水平仪 / Gradienter

配有电子和机械水平仪，可显示使用路面的倾斜程度，为操作者提供机器水平度参考。

It is equipped with electronic and mechanical gradienters, which can show the ground gradient and provide reference for the operator.

配套件明细表 Main parts list

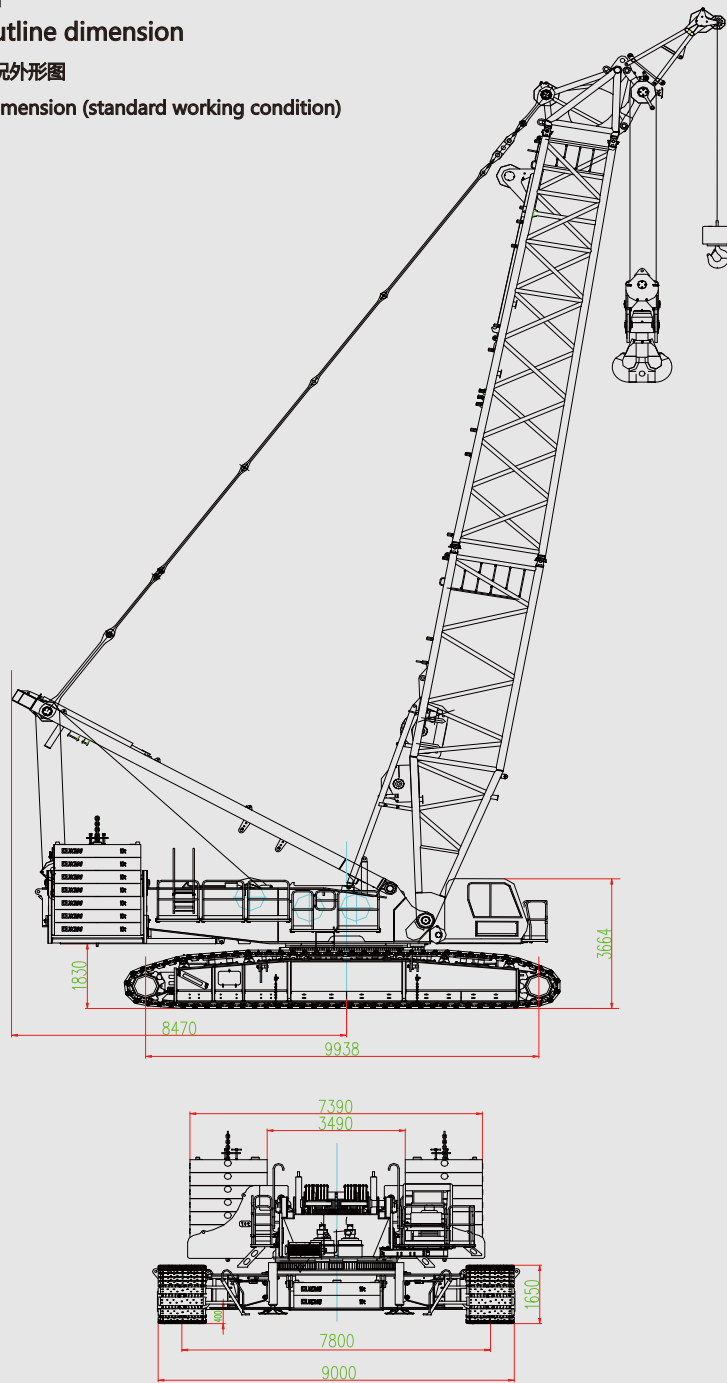
序号 No.	部件名称 Part Name	厂家 Manufacturer	
1	发动机 Engine	奔驰或其它同等知名品牌 Benz or other equivalently famous brands	
2	主卷扬 Main winch	减速机 Reducer	力士乐或其它同等知名品牌 Rexroth or other equivalently famous brand
		马达 Motor	力士乐或其它同等知名品牌 Rexroth or other equivalently famous brand
	副卷扬 Aux. winch	减速机 Reducer	力士乐或其它同等知名品牌 Rexroth or other equivalently famous brand
		马达 Motor	力士乐或其它同等知名品牌 Rexroth or other equivalently famous brand
	主变幅卷扬 Main luffing winch	减速机 Reducer	力士乐或其它同等知名品牌 Rexroth or other equivalently famous brand
		马达 Motor	力士乐或其它同等知名品牌 Rexroth or other equivalently famous brand
	超起变幅卷扬 Superlift luffing winch	减速机 Reducer	力士乐或其它同等知名品牌 Rexroth or other equivalently famous brand
		马达 Motor	力士乐或其它同等知名品牌 Rexroth or other equivalently famous brand
	回转 Slewing	减速机 Reducer	力士乐或其它同等知名品牌 Rexroth or other equivalently famous brand
		马达 Motor	力士乐或其它同等知名品牌 Rexroth or other equivalently famous brand
	行走 Travel	减速机 Reducer	O&K 或其它同等知名品牌 O&K or other equivalently famous brand
		马达 Motor	力士乐或其它同等知名品牌 Rexroth or other equivalently famous brand
		主泵 Main pump	力士乐或其它同等知名品牌 Rexroth or other equivalently famous brand
		主阀 Main valve	浙江圣邦或其它同等知名品牌 Zhejiang Shengbang or other equivalently famous brand
3	电控系统 Electrical system	力矩限制器 Load moment limiter 威卡或其它同等知名品牌 Wika or other equivalently famous brand	
4	回转支承 Slewing bearing	罗特艾德或其它同等知名品牌 Rothe Erde or other equivalently famous brand	
5	吊钩 Hook block	大长实或其它同等知名品牌 Dachangshi or other equivalently famous brand	

注：由于制造厂家的不同，型号标注会有差异。

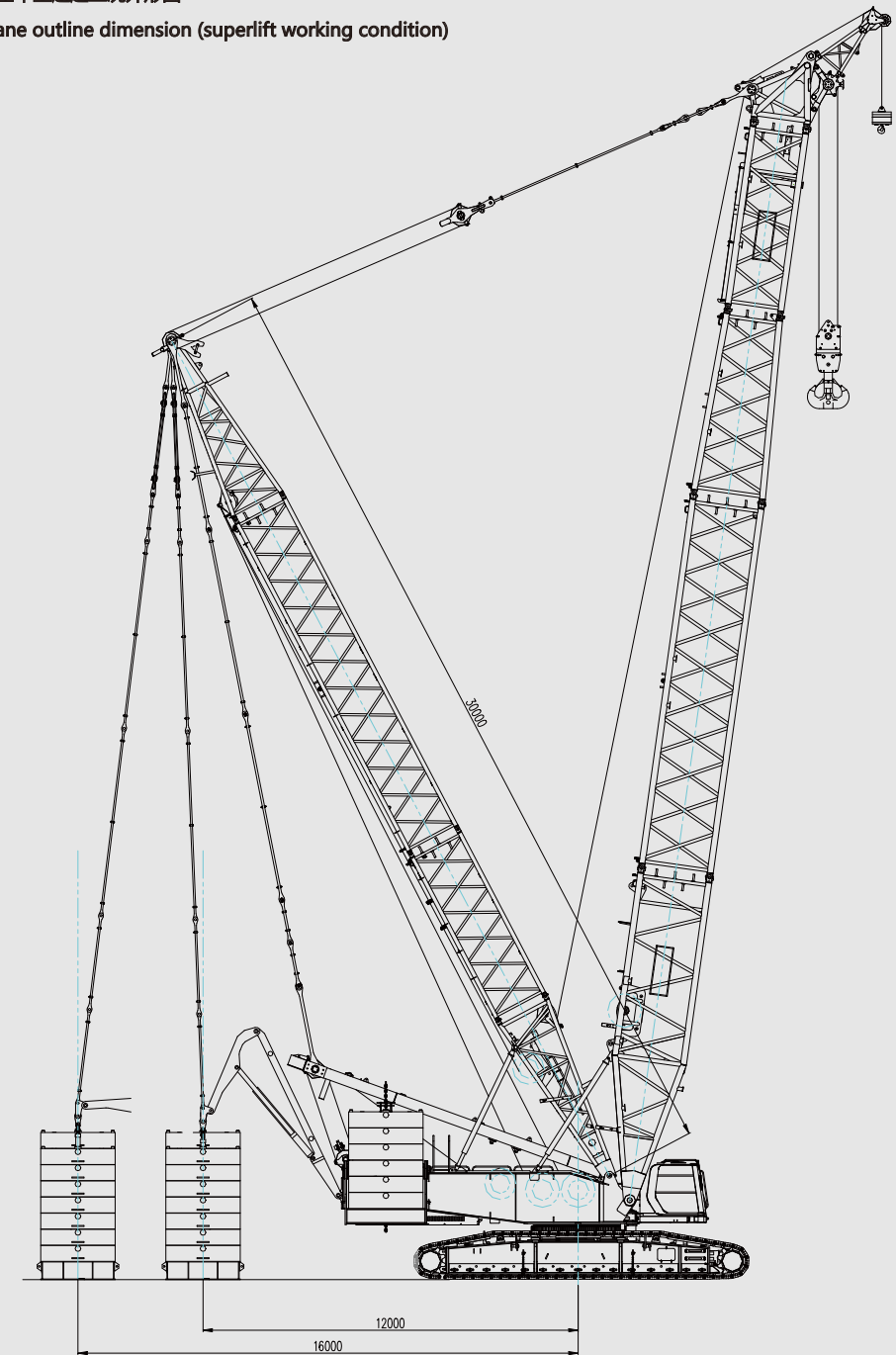
Note: Due to different manufacturers, the model of the parts will also be different.

主要技术参数
Main Technical Parameters

XGC500-I履带起重机外形图
XGC500-I crawler crane outline dimension
XGC500-I履带起重机基本型标准工况外形图
XGC500-I crawler crane outline dimension (standard working condition)



XGC500-I履带起重机基本型超起工况外形图
XGC500-I crawler crane outline dimension (superlift working condition)



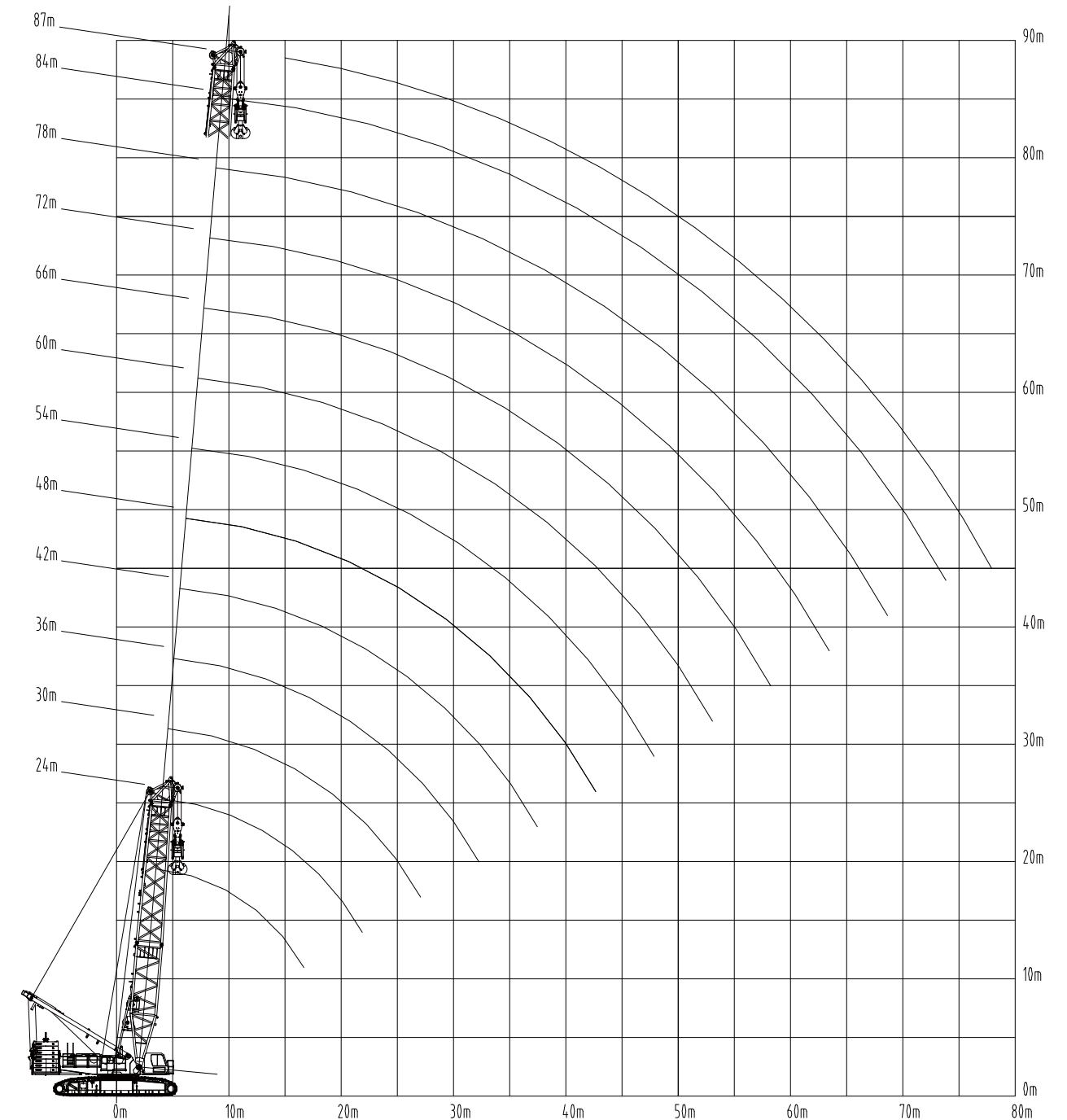
主要技术参数 Main Technical Parameters

160t转台平衡重+40t车身平衡重
160t turntable ballast+40t car-body ballast

项目 Item	单位 Unit	数值 Data			
最大额定起重量 Max. rated lifting capacity	标准工况 Standard working condition	重型主臂 Heavy boom	t	460	
		塔式副臂 Tower jib	t	216	
		盾构副臂 TBM jib	t	450(主钩 main hook) 260(副钩 aux. hook)	
		风电副臂 Wind power jib	t	130	
		超起工况 Superlift working condition	重型主臂 Heavy boom	t	500
		塔式副臂 Tower jib	t	260	
	超起工况 Superlift working condition	盾构副臂 TBM jib	t	500(主钩 main hook) 260(副钩 aux. hook)	
		风电副臂 Wind power jib	t	180	
		超起工况 Superlift working condition	t.m	6500	
		标准工况 Standard working condition	重型主臂长度 Heavy boom length	m	24 ~ 87
			塔式副臂长度 Tower jib length	m	24 ~ 72
			盾构副臂长度 TBM jib length	m	24 ~ 30+9 ~ 12
风电副臂长度 Wind power jib length	m		72~90+12		
超起工况 Superlift working condition	重型主臂长度 Heavy boom length	m	36 ~ 123		
	塔式副臂长度 Tower jib length	m	24 ~ 84		
	盾构副臂长度 TBM jib length	m	36+9 ~ 12		
	风电副臂长度(加强臂) Wind power jib length (strengthened)	m	90~126+12		
速度参数 Speed	起升最大单绳速度 Hoist winch max. single line speed	m/min	130		
	主臂变幅最大单绳速度 Boom luffing winch max. single line speed	m/min	2×53		
	超起变幅最大单绳速度 Superlift luffing winch max. single line speed	m/min	105		
	最大回转速度(空载) Max. slewing speed (no load)	rpm	1.0		
	最高行驶速度 Max. travel speed	km/h	0.73		
	发动机额定功率 Engine rated power	Kw/rpm	360/1800		
	整机重量(24m 重型主臂、500t 吊钩) Total crane weight (24m heavy boom, 500t hook block)	t	360		
	平均接地比压 Mean ground pressure	MPa	0.132		
	爬坡度(带基本臂) Grade-ability (with base boom)		30%		
	运输状态单件最大质量 Max. mass of single unit in transport state	t	55		
运输状态单件(转台)最大尺寸(长×宽×高) Max. dimension of single unit (turntable) in transport state (L×W×H)	m	11.5×3.4×3.4			

典型工况起重性能表 Lifting capacity table in typical working conditions

标准工况重型主臂HB-S
Heavy boom standard working condition HB-S



典型工况起重性能表
Lifting capacity table in typical working conditions

转台配重180t 车身配重40t

Turntable counterweight 180t, car-body counterweight 40t

幅度 Radius (m)	臂长 Boom length (m)										幅度 Radius (m)
	36	42	48	54	60	66	72	78	84	87	
6											6
7	410										7
8	368	345									8
9	319	300	284	268	255						9
10	280	265	252	239	228	218	207				10
11	249	237	226	215	206	196	188				11
12	223	214	204	195	187	180	172	165	158	150	12
14	175	172	167	165	158	152	146	140	135	130	14
16	146	143	140	137	136	131	126	121	117	113	16
18	124	121	118	115	113	110	106	104	101	98	18
20	107	105	103	100	99	97	94	92	90	87	20
22	94	92	90	88	87	86	84	82	80	78	22
24	82	81	80	78	76	75	73	70	69	67	24
26	73	72	71	69	67	65	64	63	62	60	26
28	65	63	60	59	58	57	56	55	54	52	28
30	61	59	57	56	55	54	53	51	49	47	30
34		50	48	47	46	45	44	43	40	38	34
38		42	40	39	38	37	36	35	32	30	38
42			34	33	32	31	30	28	26	24	42
46				28	27	25	25	23	21	20	46
50					22	21	20	19	17	15	50
54					19	18	16	14	12	11	54
58						15	13	12	11	10	58

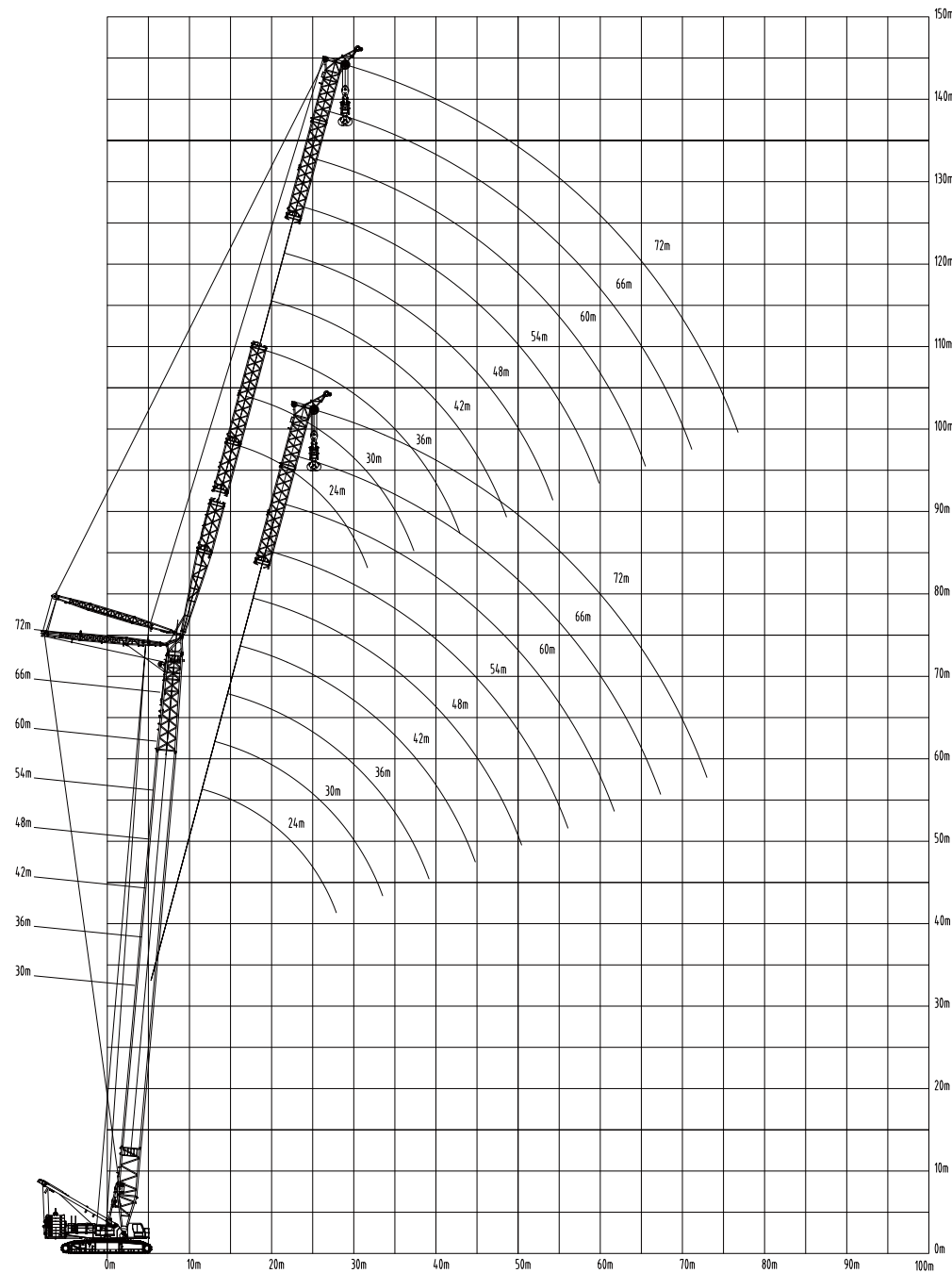
转台配重160t 车身配重40t

Turntable counterweight 160t, car-body counterweight 40t

幅度 Radius (m)	臂长 Boom length (m)												幅度 Radius (m)
	24	30	36	42	48	54	60	66	72	78	84	87	
6	460												6
7	440	420	390										7
8	380	366	340	320									8
9	333	312	294	277	261	242	235						9
10	283	273	258	244	231	220	209	200	190				10
11	244	239	230	218	207	198	189	181	173				11
12	215	210	206	197	187	178	172	165	158	151	145	142	12
14	170	167	164	161	157	151	145	139	134	128	123	121	14
16	139	138	137	135	132	129	125	120	115	111	106	104	16
18	117	117	116	115	113	111	109	105	100	97	93	91	18
20	101	99	97	96	95	94	92	90	88	85	82	80	20
22	88	87	86	84	83	81	79	77	75	74	73	71	22
24		77	75	74	73	72	71	68	65	62	60	58	24
26		67	66	63	60	59	57	54	53	51	48	46	26
28		62	60	57	55	52	50	48	45	42	38	37	28
30			54	52	50	48	46	44	42	40	37	36	30
34				45	43	41	40	38	37	36	34	33	34
38				38	36	34	33	32	31	30	27	26	38
42					30	29	28	26	25	24	23	22	42
46						25	24	23	21	20	19	18	46
50							19	17	16	15	14	13	50
54							16	14	13	12	10	9	54
58								12	11	10	9	8	58

典型工况起重性能表
Lifting capacity table in typical working conditions

标准工况塔式副臂HW-S
Tower jib standard working condition HW-S



车身平衡重180t, 转台平衡重40t, 主臂角度87度, 主臂长度30m
Turntable counterweight 180t, car-body counterweight 40t, boom angle 87°, boom length 30m

幅度 Radius (m)	副臂长度 Tower jib length (m)									幅度 Radius (m)
	24	30	36	42	48	54	60	66	72	
12	216									12
13	199	191								13
14	184	178	172							14
15	169	166	160							15
16	154	153	150	145						16
17	142	141	140	137	130					17
18	131	130	129	128	127	107				18
19	121	121	120	119	118	107				19
20	113	113	112	111	110	106	89			20
22	99	99	98	98	96	96	89	74		22
24	88	88	88	87	86	85	84	73	63	24
26	78	79	79	78	77	76	75	73	63	26
28	78	71	71	71	70	69	68	67	63	28
30		65	65	64	64	63	62	61	61	30
32		59	59	59	58	58	57	56	55	32
34			55	54	54	53	52	52	51	34
36			50	50	50	49	48	48	47	36
38			46	46	46	46	45	44	43	38
40				43	43	42	42	41	40	40
42				40	40	40	39	38	38	42
44				37	37	37	36	36	35	44
46					35	35	34	33	33	46
48					33	32	32	31	31	48
50					31	31	30	29	29	50
52						29	28	28	27	52
54						27	26	26	25	54
56						25	25	24	24	56
58							23	23	22	58
60							22	22	21	60
64								19	19	64
68								17	17	68
72									15	72

典型工况起重性能表
Lifting capacity table in typical working conditions

车身平衡重180t, 转台平衡重40t, 主臂角度85度, 主臂长度30m

Turntable counterweight 180t, car-body counterweight 40t, boom angle 85°, boom length 30m

幅度 Radius (m)	副臂长度 Tower jib length (m)									幅度 Radius (m)
	24	30	36	42	48	54	60	66	72	
14	182									14
15	169	163								15
16	158	153								16
17	149	144	139							17
18	138	136	132	128						18
19	129	127	125	121						19
20	122	122	118	115	111					20
22	107	107	106	105	101	99				22
24	94	94	93	93	92	91	87	72		24
26	84	84	84	83	82	81	80	72	62	26
28	75	76	75	75	74	73	72	72	62	28
30		69	68	68	67	67	66	65	61	30
32		62	62	62	61	61	60	59	58	32
34		57	57	57	56	56	55	54	54	34
36			53	53	52	52	51	50	49	36
38			49	49	48	48	47	46	46	38
40			45	45	45	44	43	43	42	40
42				42	42	41	40	40	39	42
44				39	39	39	38	37	37	44
46				36	36	36	35	35	34	46
48					34	34	33	33	32	48
50					32	32	31	31	30	50
52					30	30	29	29	28	52
54						28	27	27	26	54
56						26	26	25	25	56
58						26	24	24	23	58
60							23	23	22	60
64								20	20	64
68								18	17	68
72									15	72

车身平衡重180t, 转台平衡重40t, 主臂角度85度, 主臂长度36m

Turntable counterweight 180t, car-body counterweight 40t, boom angle 85°, boom length 36m

幅度 Radius (m)	副臂长度 Tower jib length (m)									幅度 Radius (m)
	24	30	36	42	48	54	60	66	72	
14	174									14
15	163									15
16	152	147								16
17	143	139	134							17
18	136	131	127							18
19	125	124	120	117						19
20	116	116	114	111	108					20
22	100	101	100	100	98	96				22
24	88	88	88	88	88	88	84			24
26	78	79	79	78	78	78	78	69		26
28	70	71	71	70	70	70	69	69	60	28
30		64	64	64	63	63	62	63	59	30
32		58	58	58	58	57	57	57	56	32
34		53	53	53	53	52	52	52	51	34
36			49	49	49	48	48	47	47	36
38			45	45	45	45	44	44	43	38
40			42	42	42	41	40	40	40	40
42				39	39	38	38	37	37	42
44				36	36	36	35	35	34	44
46				34	34	33	33	32	32	46
48					31	31	30	30	30	48
50					29	29	29	28	28	50
52					27	28	27	27	26	52
54						26	25	25	24	54
56						24	24	23	23	56
58						23	22	22	22	58
60							21	21	20	60
64							18	18	18	64
68								16	16	68
72									14	72
76									14	76

典型工况起重性能表
Lifting capacity table in typical working conditions

车身平衡重180t, 转台平衡重40t, 主臂角度85度, 主臂长度48m
Turntable counterweight 180t, car-body counterweight 40t, boom angle 85°, boom length 48m

幅度 Radius (m)	副臂长度 Tower jib length (m)									幅度 Radius (m)
	24	30	36	42	48	54	60	66	72	
15	150									15
16	141									16
17	133	129								17
18	126	122	118							18
19	119	115	112							19
20	113	110	107	104						20
22	103	100	97	94	92					22
24	95	92	89	87	84	82	79			24
26	86	85	82	80	78	76	73	67		26
28	78	77	76	74	72	70	68	67	58	28
30	71	71	70	69	67	66	63	62	58	30
32		66	65	65	63	61	59	58	56	32
34		60	60	60	59	57	55	54	52	34
36		56	56	55	55	54	52	51	49	36
38			52	52	51	51	49	48	46	38
40			49	48	48	47	46	45	44	40
42			45	45	45	44	44	43	41	42
44				42	42	42	41	40	39	44
46				40	39	39	38	38	37	46
48				37	37	37	36	36	35	48
50					35	35	34	34	33	50
52					33	33	32	32	31	52
54						31	30	30	29	54
56						29	29	28	28	56
58						28	27	27	26	58
60							26	25	25	60
64							23	23	22	64
68								21	20	68
72									18	72
76									16	76

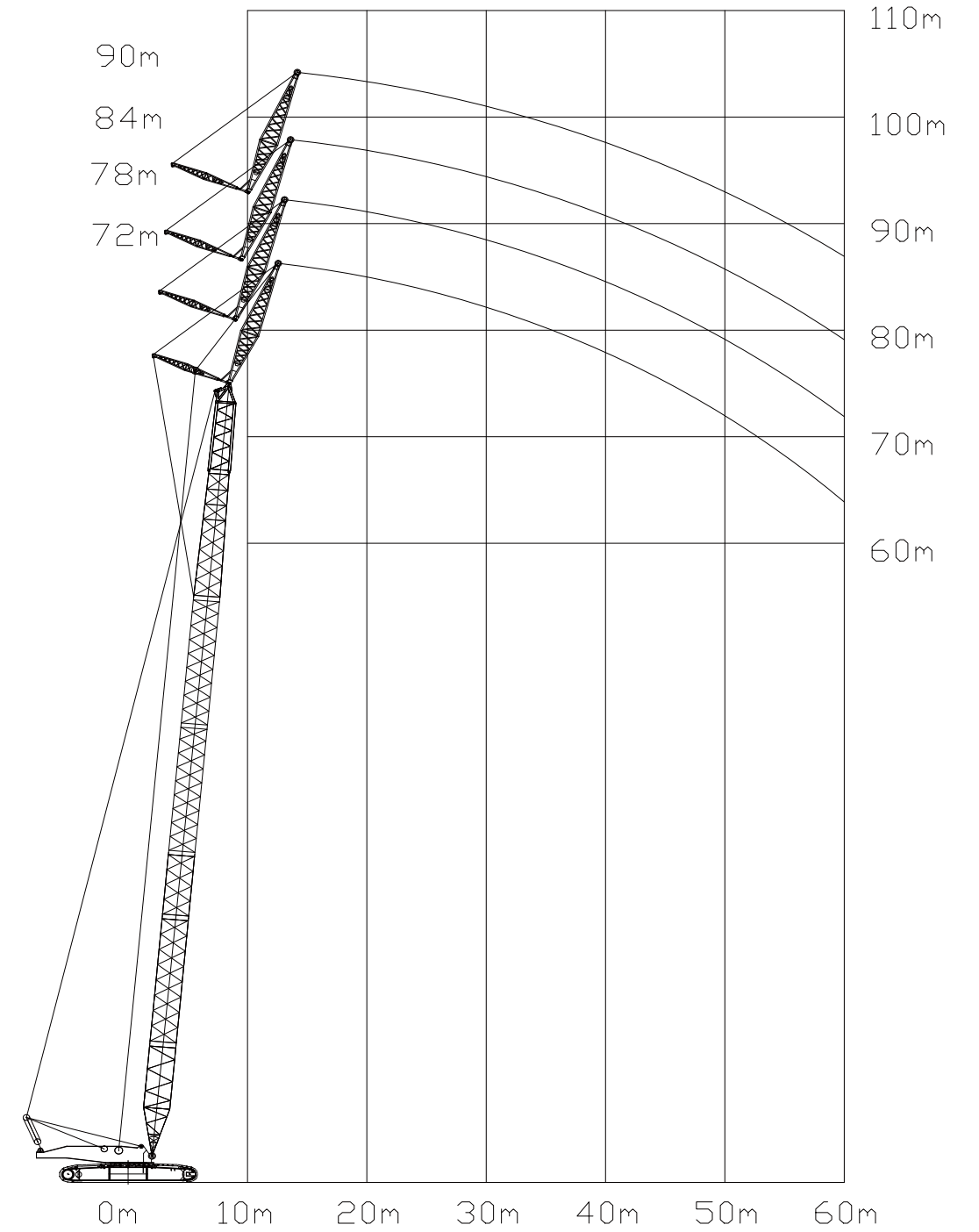
车身平衡重180t, 转台平衡重40t, 主臂角度85度, 主臂长度60m
Turntable counterweight 180t, car-body counterweight 40t, boom angle 85°, boom length 60m

幅度 Radius (m)	副臂长度 Tower jib length (m)									幅度 Radius (m)
	24	30	36	42	48	54	60	66	72	
16	130									16
17	123									17
18	116	113								18
19	111	107	104							19
20	105	102	99							20
22	96	93	91	88	85					22
24	88	86	83	81	78	76				24
26	82	79	77	75	73	71	68			26
28	76	74	72	70	67	66	63	60		28
30	71	69	67	65	63	61	59	58	52	30
32		64	63	61	59	57	55	54	52	32
34		60	59	57	55	54	52	51	49	34
36		55	55	54	52	51	49	48	46	36
38			51	51	49	48	46	45	43	38
40			48	48	46	45	43	42	41	40
42			45	44	44	43	41	40	38	42
44				42	41	41	39	38	36	44
46				39	39	39	37	36	34	46
48				37	36	36	35	34	33	48
50					34	34	33	32	31	50
52					32	32	31	31	30	52
54					31	30	30	29	28	54
56						29	28	28	27	56
58						27	27	26	26	58
60						26	25	25	24	60
64							23	22	22	64
68								21	20	68
72									18	72
76									16	76

典型工况起重性能表
Lifting capacity table in typical working conditions



标准工况风电副臂HJ
Wind power jib standard working condition HJ



典型工况起重性能表
Lifting capacity table in typical working conditions

转台配重160t, 车身配重40t, 主副臂夹角10°, 副臂12m

Turntable counterweight 160t, car-body counterweight 40t, jib offset angle 10°, jib length 12m

幅度 Radius (m)	主臂长 Boom length (m)							幅度 Radius (m)
	72	75	78	81	84	87	90	
15	125	122	120					15
16	118	116	114	112				16
17	111	109	107	105	103	97		17
18	104	103	101	99	97	94	95	18
19	99	97	95	93	92	90	88	19
20	93	91	90	88	87	86	84	20
22	84	82	81	79	78	77	75	22
24	76	74	73	72	71	69	68	24
26	69	67	66	65	64	63	62	26
28	62	61	61	57	55	53	50	28
30	56	54	52	50	48	46	45	30
32	51	50	49	46	45	43	41	32
34	46	45	43	42	41	40	39	34
36	42	40	38	36	35	33	31	36
38	38	37	36	35	34	32	30	38
40	35	33	32	30	28	26	24	40
42	32	30	28	26	24	23	21	42
44	30	29	26	24	22	21	20	44
46	27	25	23	21	20	18	16	46
48	25	23	21	20	18	16	14	48
50	23	22	20	18	16	14	12	50
52	22	21	18	16	14	13	11	52
54	20	19	17	15	13	11	10	54

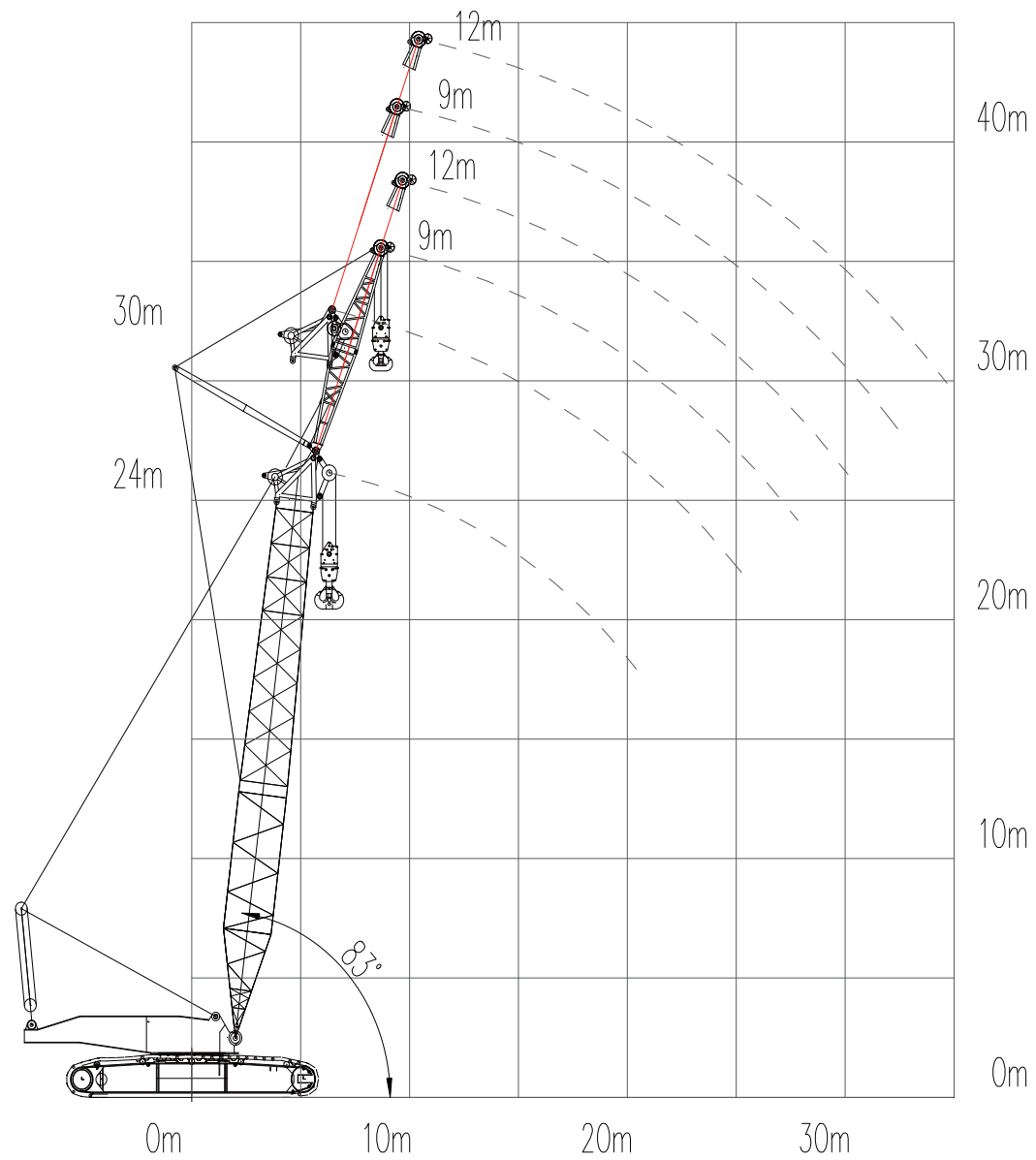
转台配重180t, 车身配重40t, 主副臂夹角10°, 副臂12m

Turntable counterweight 180t, car-body counterweight 40t, jib offset angle 10°, jib length 12m

幅度 Radius (m)	主臂长 Boom length (m)							幅度 Radius (m)
	72	75	78	81	84	87	90	
15	130	125	120					15
16	129	120	118	113				16
17	122	117	117	110	105	103		17
18	114	112	110	109	103	101	100	18
19	108	106	104	103	101	97	95	19
20	102	100	99	97	96	94	92	20
22	92	90	89	87	86	85	83	22
24	83	82	80	79	78	77	75	24
26	76	74	73	72	71	70	68	26
28	68	66	64	62	60	59	58	28
30	62	60	58	56	53	50	47	30
32	56	54	52	50	48	45	43	32
34	51	49	48	47	45	43	41	34
36	47	45	42	40	39	37	35	36
38	43	42	40	38	36	33	31	38
40	39	38	36	35	33	31	30	40
42	36	34	33	31	30	28	27	42
44	34	33	31	29	27	25	23	44
46	31	30	28	26	25	23	21	46
48	29	28	27	25	24	22	20	48
50	27	26	25	23	22	20	18	50
52	25	24	23	21	20	18	16	52
54	23	22	21	20	18	16	14	54

典型工况起重性能表
Lifting capacity table in typical working conditions

标准工况盾构副臂HF
TBM jib standard working condition HF



主臂长度24m 副臂长度9m主副臂夹角10°

转台配重160t 车身配重40t

Boom length 24m, jib length 9m, jib offset angle 10°

Turntable counterweight 160t, car-body counterweight 40t

主钩半径 Main hook radius	主臂角度 Boom angle	主钩载荷 Main hook load	副钩半径 Aux. hook radius	副钩载荷 Aux. hook load	联合吊载 Combined lifting
6	83.75	450	8.3	260	400
7	81.33	430	9.6	260	362
8	78.88	370	11	237	302
9	76.4	315	12.4	199	257
10	73.9	276	13.8	171	219
11	71.35	237	15.2	149	191
12	68.76	206	16.6	130	168
13	66.11	180	18	115	148
14	63.39	159	19.4	102	132
15	60.61	141	20.8	92	119
16	57.73	127	22.2	83	108
17	54.74	114	23.6	75	99
18	51.62	104	24.9	68	91
19	48.35	95	26.3	63	83
20	44.87	87	27.7	57	77
22	37.06	73	30.4	49	67

典型工况起重性能表
Lifting capacity table in typical working conditions

主臂长度24m 副臂长度12m主副臂夹角10°

转台配重160t 车身配重40t

Boom length 24m, jib length 12m, jib offset angle 10°

Turntable counterweight 160t, car-body counterweight 40t

主钩半径 Main hook radius	主臂角度 Boom angle	主钩载荷 Main hook load	副钩半径 Aux. hook radius	副钩载荷 Aux. hook load	联合吊载 Combined lifting
6	83.75	450	9.1	250	390
7	81.33	400	10.6	240	331
8	78.88	350	12.1	207	278
9	76.4	310	13.6	175	236
10	73.9	274	15.2	151	202
11	71.35	234	16.7	131	176
12	68.76	204	18.2	115	155
13	66.11	178	19.7	102	137
14	63.39	157	21.2	91	123
15	60.61	139	22.7	81	111
16	57.73	125	24.2	74	100
17	54.74	112	25.7	67	92
18	51.62	102	27.2	61	84
19	48.35	93	28.7	56	78
20	44.87	85	30.1	51	72
22	37.06	71	33.1	43	62

主臂长度30m 副臂长度9m主副臂夹角10°

转台配重160t 车身配重40t

Boom length 30m, jib length 9m, jib offset angle 10°

Turntable counterweight 160t, car-body counterweight 40t

主钩半径 Main hook radius	主臂角度 Boom angle	主钩载荷 Main hook load	副钩半径 Aux. hook radius	副钩载荷 Aux. hook load	联合吊载 Combined lifting
7	83.08	400	9.4	250	325
8	81.14	343	10.7	222	277
9	79.19	291	12	192	239
10	77.22	252	13.3	167	209
11	75.23	219	14.6	146	183
12	73.22	191	15.9	129	161
13	71.18	169	17.3	114	144
14	69.12	151	18.6	102	130
15	67.02	134	19.9	92	116
16	64.89	120	21.2	82	106
17	62.71	109	22.5	75	96
18	60.48	98	23.8	68	89
19	58.2	90	25.1	62	81
20	55.85	82	26.4	57	76
22	50.92	70	29	49	65
24	45.58	59	31.6	41	57
26	39.64	51	34.2	36	50
26	39.64	56	36.8	37	52

典型工况起重性能表
Lifting capacity table in typical working conditions

主臂长度30m 副臂长度12m主副臂夹角10°

转台配重160t 车身配重40t

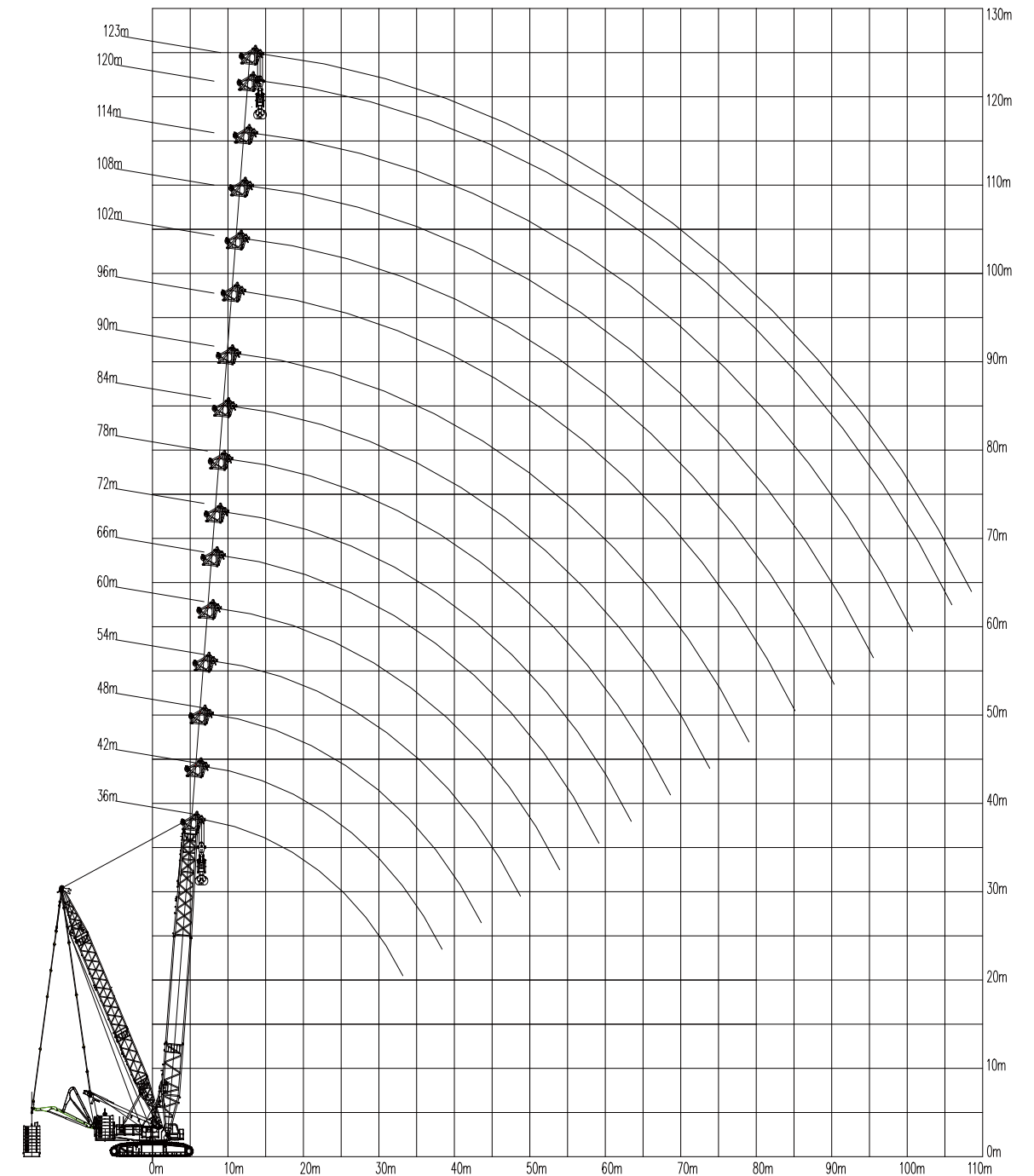
Boom length 30m, jib length 12m, jib offset angle 10°

Turntable counterweight 160t, car-body counterweight 40t

主钩半径 Main hook radius	主臂角度 Boom angle	主钩载荷 Main hook load	副钩半径 Aux. hook radius	副钩载荷 Aux. hook load	联合吊载 Combined lifting
7	7	370	10.2	230	303
8	8	339	11.6	197	256
9	9	289	13.1	171	222
10	10	250	14.5	149	194
11	11	217	15.9	130	170
12	12	190	17.3	115	151
13	13	167	18.7	103	135
14	14	149	20.1	92	121
15	15	133	21.5	82	109
16	16	118	22.9	75	99
17	17	107	24.3	68	91
18	18	97	25.7	61	83
19	19	88	27.1	57	76
20	20	80	28.5	52	71
22	22	68	31.3	44	61
24	24	57	34	38	53
26	26	50	36.8	32	47

超起工况重型主臂SHB-S

Heavy boom superlift working condition (SHB-S)



典型工况起重性能表
Lifting capacity table in typical working conditions

转台配重160t 车身配重40t 超起配重0~190t

超起桅杆半径13m 超起配重半径12~16m

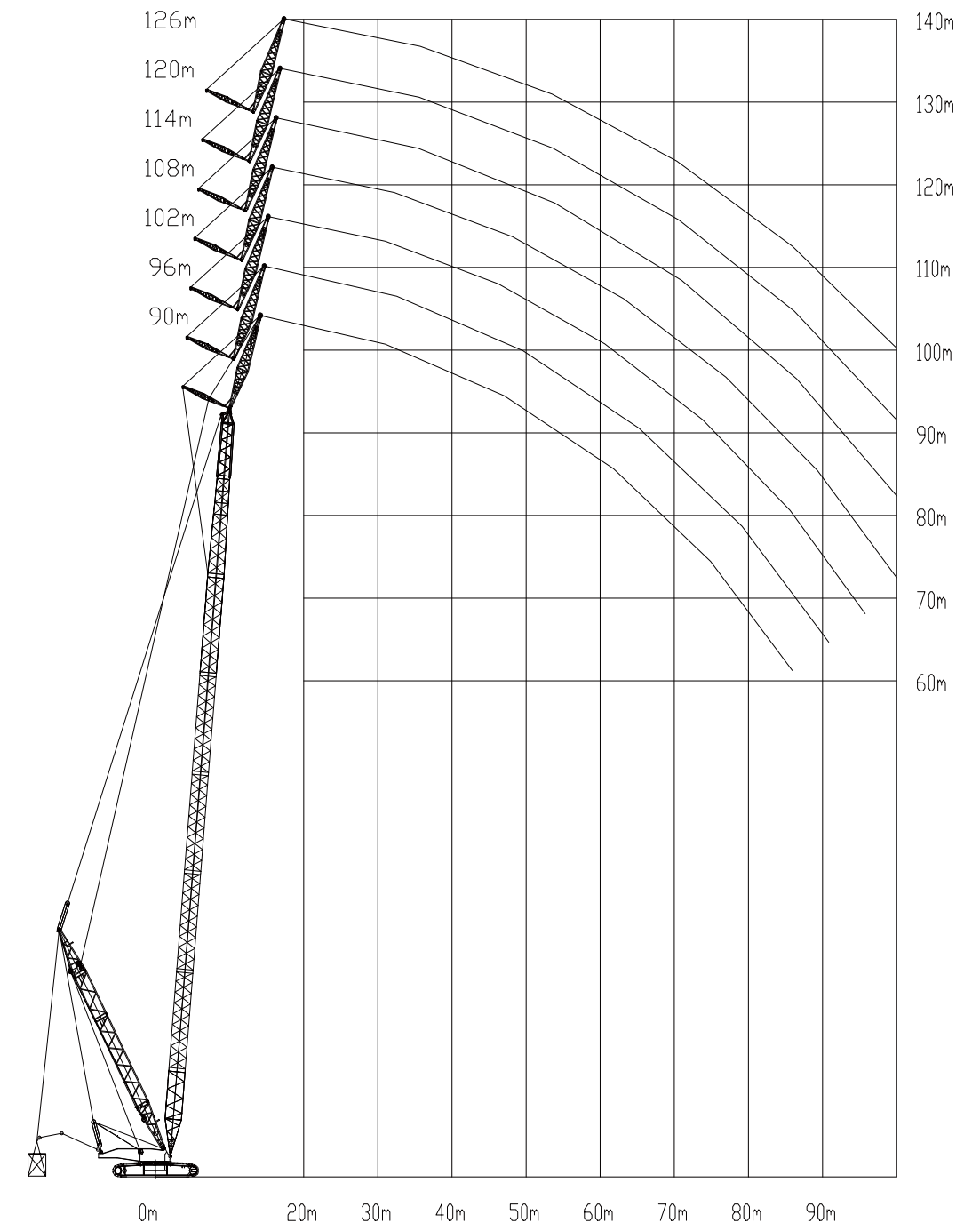
Turntable counterweight 160t, car-body counterweight 40t, superlift counterweight 0~190t

Superlift mast radius 13m, superlift counterweight radius 12~16m

幅度 Radius (m)	主臂长 Boom length (m)															幅度 Radius (m)	
	36	42	48	54	60	66	72	78	84	90	96	102	108	114	120		123
8	500	500															8
9	500	500	451	371													9
10	500	500	451	371	335												10
11	500	480	451	371	335	323	285										11
12	465	478	451	371	335	323	285	258	239								12
14	392	409	410	371	335	323	285	258	239	221	200						14
16	333	352	358	333	328	323	285	258	239	221	200	185	168				16
18	286	305	317	292	289	285	280	258	239	221	200	185	168	158	145	141	18
20	250	266	279	260	259	254	250	237	233	221	200	185	168	158	145	141	20
22	220	235	247	232	232	230	225	222	219	215	191	185	168	158	145	141	22
24	196	209	220	209	208	208	206	201	199	195	183	178	168	158	145	141	24
26	176	188	198	189	189	189	188	185	181	178	176	173	168	143	139	141	26
28	158	169	178	173	173	172	171	170	168	163	161	158	156	141	137	141	28
30	143	154	162	158	158	157	156	155	154	152	150	146	143	130	136	135	30
34		128	136	132	134	133	132	131	130	129	128	126	124	119	117	116	34
38		107	115	112	116	115	114	113	112	111	110	108	107	104	102	101	38
42			97	95	100	101	99	98	98	96	95	93	92	90	89	88	42
46				82	86	89	87	87	86	84	83	81	81	78	77	77	46
50					75	78	78	77	76	74	74	72	71	68	67	67	50
54					65	68	70	69	68	66	65	63	63	60	59	58	54
58						59	61	62	61	59	58	56	56	53	52	51	58
62							54	55	55	53	52	50	49	47	46	45	62
65							48	50	51	49	48	46	45	43	42	41	65
66								49	50	48	47	45	44	42	41	40	66
70									42	44	43	42	40	40	37	35	70
74										38	38	38	36	35	33	31	74
78											33	34	33	32	29	28	78
82												29	28	28	26	24	82
86													24	24	22	21	86
90														20	21	18	90
94															17	15	94

超起工况风电副臂SHJ-S

Wind power jib superlift working condition SHJ-S



典型工况起重性能表
Lifting capacity table in typical working conditions

转台平衡重 160t 车身配重40t 超起平衡重 0~190t 超起桅杆半径13m

超起配重半径 12~16m 副臂12m 主副臂夹角15°

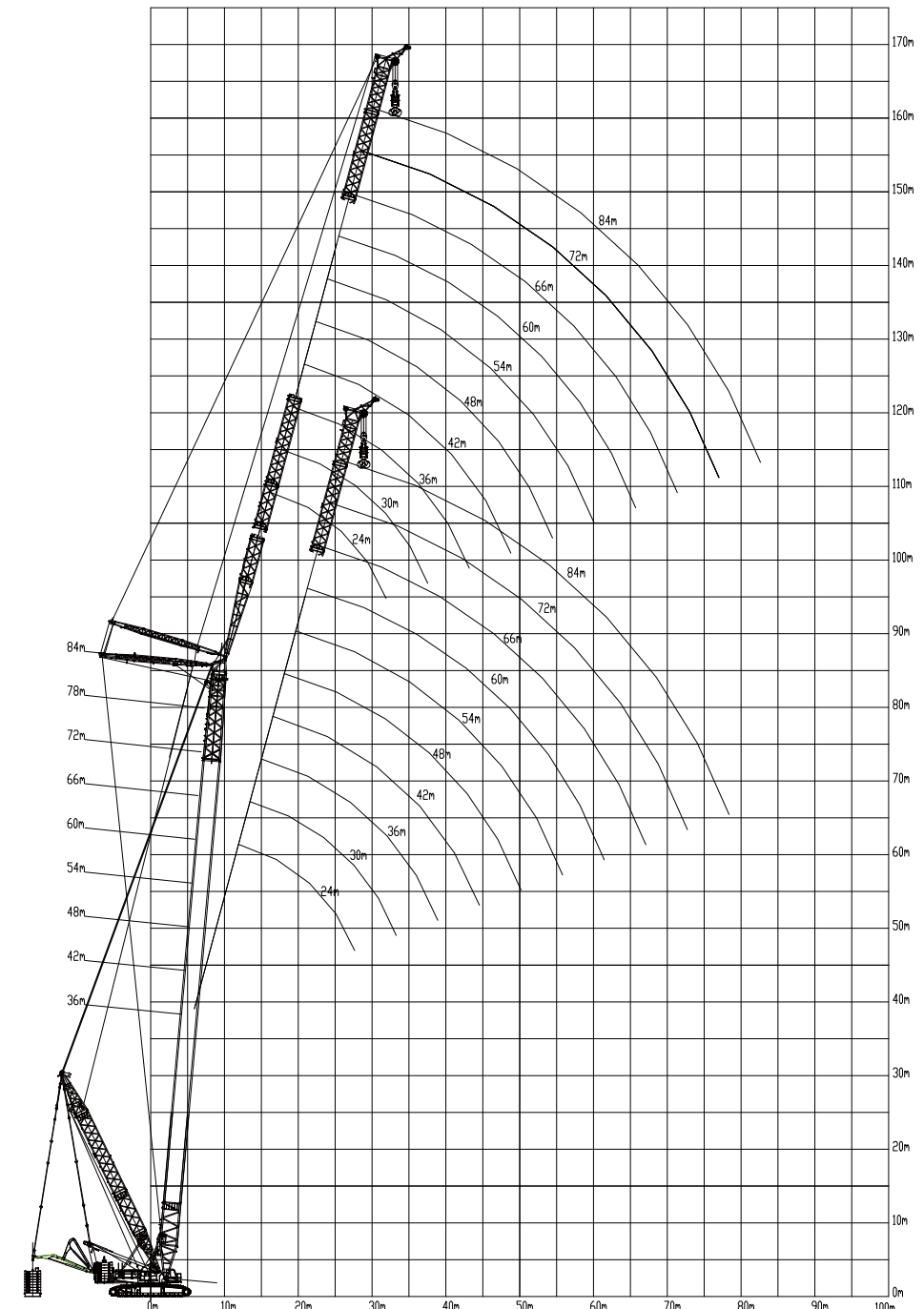
Turntable counterweight 160t, car-body counterweight 40t, superlift counterweight 0~190t

Superlift mast radius 13m, superlift counterweight radius 12~16m, jib length 12m, jib offset angle 15°

幅度 Radius (m)	主臂长 Boom length (m)													幅度 Radius (m)
	90	93	96	99	102	105	108	111	114	117	120	123	126	
16	180	180	172											16
17	180	180	172	165										17
18	176	177	170	163	170	160	155	145						18
19	170	173	168	162	168	160	151	145	145	140				19
20	165	170	165	160	166	158	150	143	143	140	135	126	120	20
22	156	161	162	158	164	155	148	141	140	139	133	123	118	22
24	150	155	156	156	159	152	145	139	138	138	131	121	117	24
26	145	148	150	151	153	149	143	137	134	137	130	119	115	26
28	140	142	144	145	147	147	140	134	133	136	129	117	114	28
30	135	136	138	140	142	143	137	132	130	134	127	115	112	30
32	127	131	133	135	137	138	134	129	124	132	126	112	110	32
34	125	126	129	130	132	134	132	127	120	119	124	110	108	34
36	120	122	124	126	125	124	123	122	118	111	119	108	105	36
38	115	119	120	119	117	116	115	114	113	104	112	105	102	38
40	110	112	111	111	109	109	108	107	106	98	105	104	100	40
42	105	105	104	104	102	101	101	100	99	91	98	98	96	42
44	99	98	98	97	95	95	94	94	93	85	92	91	90	44
46	93	92	92	91	89	89	88	88	87	79	86	85	84	46
48	87	87	86	86	84	83	83	82	81	74	80	79	78	48
50	82	82	81	81	79	78	78	77	76	69	75	74	73	50
52	78	77	77	76	74	74	73	73	72	65	71	70	69	52
54	73	73	72	72	70	70	69	68	67	61	66	66	65	54
56	70	69	69	68	66	66	65	65	63	57	62	62	61	56
58	66	65	65	64	63	62	62	61	60	54	59	58	57	58
60	63	62	62	61	59	59	58	58	57	51	55	55	54	60
64	57	56	56	55	53	53	52	52	51	45	49	49	48	64
68	51	51	50	50	48	47	47	46	45	40	44	43	43	68
72	47	46	46	45	43	43	42	42	41	36	39	39	38	72
76	43	42	42	41	39	39	38	38	36	32	35	35	34	76
80	39	38	38	37	36	35	35	34	33	28	32	31	30	80
84	36	35	35	34	32	32	31	30	29	25	28	28	27	84
88	32	32	31	31	29	29	28	27	26	22	25	25	24	88
92	28	28	28	28	26	26	25	25	24	20	22	22	21	92
96			24	24	22	22	22	22	21	17	20	19	19	96
100				21	19	19	19	19	18	14	18	17	16	100

超起工况塔式副臂SHW-S

Tower jib superlift working condition SHW-S



典型工况起重性能表
Lifting capacity table in typical working conditions

转台平衡重 120t 车身配重0t 超起平衡重 0~270t

超起桅杆半径13m 超起配重半径 12~16m 主臂长度36m 主臂角度85°

Turntable counterweight 120t, car-body counterweight 0t, superlift counterweight 0~270t

Superlift mast radius 13m, superlift counterweight radius 12~16m, boom length 36m, boom angle 85°

幅度 Radius (m)	副臂长度 Jib length (m)											幅度 Radius (m)
	24	30	36	42	48	54	60	66	72	78	84	
14	260											14
15	260											15
16	260	225										16
17	260	225	185									17
18	260	225	185									18
19	251	221	185	151								19
20	237	212	184	151	122							20
22	203	194	173	150	122	100						22
24	174	176	161	143	122	100	84					24
26	150	159	149	135	119	100	84	70				26
28	127	142	137	126	113	99	84	69	60	50		28
30		126	125	118	107	96	83	69	60	50	43	30
32		112	114	109	101	91	82	69	59	49	43	32
34		98	103	101	95	87	79	68	59	49	43	34
36			93	93	89	83	75	67	59	48	42	36
38			84	85	83	78	72	65	58	48	42	38
40			76	78	77	74	69	62	57	48	41	40
42				71	71	69	65	60	55	47	41	42
44				65	66	65	62	57	53	47	41	44
46				59	61	61	59	55	51	45	40	46
48					56	57	55	52	49	44	40	48
50					52	53	52	50	47	43	39	50
52					48	49	49	47	45	41	38	52
54						46	46	45	43	40	36	54
56						43	43	42	41	38	35	56
58						39	40	40	39	37	34	58
60							38	38	37	35	33	60
64							33	34	34	32	30	64
68								30	30	29	28	68
72									27	27	26	72
76									26	24	24	76
80										22	22	80
84											20	84

转台平衡重 120t 车身配重0t 超起平衡重 0~270t

超起桅杆半径13m 超起配重半径 12~16m 主臂长度48m 主臂角度85°

Turntable counterweight 120t, car-body counterweight 0t, superlift counterweight 0~270t

Superlift mast radius 13m, superlift counterweight radius 12~16m, boom length 48m, boom angle 85°

幅度 Radius (m)	副臂长度 Jib length (m)											幅度 Radius (m)
	24	30	36	42	48	54	60	66	72	78	84	
15	239											15
16	239											16
17	239	204										17
18	239	204	168									18
19	232	204	168									19
20	220	197	168	136								20
22	196	181	162	136	111							22
24	173	164	150	133	111	91	77					24
26	152	148	139	126	111	91	77	64				26
28	138	132	127	118	106	91	77	64	55			28
30	111	118	116	109	100	90	77	64	55	46		30
32		105	105	101	94	86	76	63	55	46	40	32
34		94	95	93	88	81	74	63	55	45	39	34
36		83	86	85	82	77	70	63	54	45	39	36
38			77	78	76	72	67	61	54	45	39	38
40				70	71	70	68	64	58	53	44	40
42				62	65	65	63	60	56	51	44	42
44					59	60	59	57	53	49	44	44
46					54	55	55	53	50	47	42	46
48					54	51	51	50	48	45	41	48
50						47	47	47	45	43	39	50
52						43	44	44	43	41	38	52
54							41	41	40	39	36	54
56								38	38	37	35	56
58								35	36	36	35	58
60									33	33	33	60
64										29	29	64
68										26	26	68
72											23	72
76											20	76
80												80
84												84
88												88

典型工况起重性能表
Lifting capacity table in typical working conditions

转台平衡重 120t 车身配重0t 超起平衡重 0~270t

超起桅杆半径13m 超起配重半径 12~16m 主臂长度60m 主臂角度85°

Turntable counterweight 120t, car-body counterweight 0t, superlift counterweight 0~270t

Superlift mast radius 13m, superlift counterweight radius 12~16m, boom length 60m, boom angle 85°

幅度 Radius (m)	副臂长度 Jib length (m)											幅度 Radius (m)
	24	30	36	42	48	54	60	66	72	78	84	
16	201											16
17	201											17
18	199	174										18
19	191	169	143									19
20	182	163	143									20
22	164	151	136	117	97							22
24	147	138	127	114	97	81						24
26	131	125	118	107	96	81	69					26
28	116	113	108	100	91	81	69	58				28
30	103	102	99	93	86	78	69	58	51	43		30
32		91	90	86	81	74	67	58	50	42	37	32
34		82	82	79	76	70	64	58	50	42	37	34
36		73	74	73	70	66	61	56	50	42	37	36
38			67	67	65	62	58	53	49	42	36	38
40			61	61	60	58	55	51	47	41	36	40
42			55	56	56	54	52	48	45	40	36	42
44				51	51	51	49	46	43	39	35	44
46				47	47	47	46	44	41	38	34	46
48				42	43	44	43	41	39	36	33	48
50					40	40	40	39	37	35	32	50
52					37	37	37	36	35	33	31	52
54					34	35	35	34	33	31	29	54
56						32	32	32	31	30	28	56
58						30	30	30	30	28	27	58
60						27	28	28	28	27	26	60
64							24	25	25	24	23	64
68								22	22	22	21	68
72									19	19	19	72
76										17	17	76
80											15	80

转台平衡重 120t 车身配重0t 超起平衡重 0~270t

超起桅杆半径13m 超起配重半径 12~16m 主臂长度72m 主臂角度85°

Turntable counterweight 120t, car-body counterweight 0t, superlift counterweight 0~270t

Superlift mast radius 13m, superlift counterweight radius 12~16m, boom length 72m, boom angle 85°

幅度 Radius (m)	副臂长度 Jib length (m)											幅度 Radius (m)
	24	30	36	42	48	54	60	66	72	78	84	
17	179											17
18	176											18
19	170	151										19
20	163	146	127									20
22	149	137	123	106								22
24	135	126	116	104	89							24
26	122	116	108	98	88	75						26
28	110	106	100	93	84	75	65	55				28
30	98	96	92	86	80	72	64	55	48			30
32	88	87	84	80	75	69	63	55	48	40		32
34		79	77	74	70	66	60	54	48	40	35	34
36		71	70	69	66	62	57	52	47	40	35	36
38		64	64	63	61	58	54	50	46	40	35	38
40			58	58	57	55	51	48	44	39	35	40
42			53	53	53	51	49	45	42	38	34	42
44			48	49	49	48	46	43	40	37	33	44
46				45	45	44	43	41	39	35	32	46
48				41	41	41	40	39	37	34	31	48
50				41	38	38	38	36	35	32	30	50
52					35	36	35	34	33	31	29	52
54					33	33	33	32	31	29	28	54
56						31	31	30	29	28	26	56
58						28	29	28	28	27	25	58
60						26	27	27	26	25	24	60
64							23	23	23	23	22	64
68								20	20	20	20	68
72									18	18	18	72
76										16	16	76

典型工况起重性能表
Lifting capacity table in typical working conditions

转台平衡重 120t 车身配重0t 超起平衡重 0~270t

超起桅杆半径13m 超起配重半径 12~16m 主臂长度84m 主臂角度85°

Turntable counterweight 120t, car-body counterweight 0t, superlift counterweight 0~270t

Superlift mast radius 13m, superlift counterweight radius 12~16m, boom length 84m, boom angle 85°

幅度 Radius (m)	副臂长度 Jib length (m)											幅度 Radius (m)
	24	30	36	42	48	54	60	66	72	78	84	
18	141											18
19	137											19
20	133	119										20
22	123	112	101									22
24	113	105	96	86	75							24
26	104	97	90	82	74	65						26
28	95	90	84	78	71	64	56					28
30	86	82	78	73	67	62	55	48				30
32	78	75	72	68	64	59	53	48	42	36		32
34		69	67	64	60	56	51	47	42	36	32	34
36		63	61	59	56	53	49	45	41	36	32	36
38		57	56	55	53	50	47	43	39	35	32	38
40			52	51	49	47	44	41	38	34	31	40
42			47	47	46	44	42	39	36	33	30	42
44			44	43	42	41	39	37	35	32	29	44
46				40	39	38	37	35	33	31	28	46
48				37	36	36	35	33	32	29	27	48
50				34	34	33	33	31	30	28	26	50
52					31	31	30	30	28	27	25	52
54					29	29	28	28	27	25	24	54
56					27	27	27	26	25	24	23	56
58						25	25	25	24	23	22	58
60						23	23	23	23	22	21	60
64							20	20	20	19	19	64
68								18	18	18	17	68
72									16	16	15	72

转台平衡重 120t 车身配重0t 超起平衡重 0~270t

超起桅杆半径13m 超起配重半径 12~16m 主臂长度36m 主臂角度75°

Turntable counterweight 120t, car-body counterweight 0t, superlift counterweight 0~270t

Superlift mast radius 13m, superlift counterweight radius 12~16m, boom length 36m, boom angle 75°

幅度 Radius (m)	副臂长度 Jib length (m)											幅度 Radius (m)
	24	30	36	42	48	54	60	66	72	78	84	
24	240											24
26	219											26
28	202	201										28
30	185	187	171									30
32	160	169	170	134								32
34	138	150	152	134	108							34
36		134	137	134	108							36
38		119	124	126	108	88						38
40		106	112	116	108	88	74					40
42			102	106	108	88	74	61				42
44			92	97	99	87	74	61	52			44
46			82	89	92	82	74	61	52			46
48				82	85	78	74	61	52	43		48
50				75	79	73	74	61	52	43	37	50
52				68	73	70	74	61	52	43	37	52
54					68	66	71	61	52	42	37	54
56					62	63	66	61	52	42	36	56
58					57	60	62	61	52	42	36	58
60						56	58	59	52	42	36	60
64						47	51	53	52	42	36	64
68							44	47	48	42	36	68
72								41	42	41	35	72
76									35	38	37	76
80										33	34	80
84											31	84
88												88
92												92

典型工况起重性能表
Lifting capacity table in typical working conditions

转台平衡重 120t 车身配重0t 超起平衡重 0~270t

超起桅杆半径13m 超起配重半径 12~16m 主臂长度42m 主臂角度75°

Turntable counterweight 120t, car-body counterweight 0t, superlift counterweight 0~270t

Superlift mast radius 13m, superlift counterweight radius 12~16m, boom length 42m, boom angle 75°

幅度 Radius (m)	副臂长度 Jib length (m)										幅度 Radius (m)	
	24	30	36	42	48	54	60	66	72	78		84
26	231											26
28	212	198										28
30	197	196										30
32	178	183	158									32
34	154	163	158	125								34
36	132	145	148	125	101							36
38		129	133	125	101	82						38
40		115	120	123	101	82						40
42		101	109	113	101	82	70					42
44			99	103	101	82	70	57				44
46			89	95	97	82	70	57	49			46
48			79	87	90	81	70	57	49	41		48
50				80	83	77	70	57	49	41		50
52				72	77	72	70	57	49	41	35	52
54				65	71	69	70	57	49	41	35	54
56					66	65	69	57	49	41	35	56
58					60	62	65	57	49	41	35	58
60					55	59	61	57	49	41	35	60
64						50	53	55	49	40	35	64
68							46	49	49	40	35	68
72							39	43	44	40	34	72
76								37	39	39	34	76
80									34	35	34	80
84										32	32	84
88											28	88
92												92

转台平衡重 120t 车身配重0t 超起平衡重 0~270t

超起桅杆半径13m 超起配重半径 12~16m 主臂长度54m 主臂角度75°

Turntable counterweight 120t, car-body counterweight 0t, superlift counterweight 0~270t

Superlift mast radius 13m, superlift counterweight radius 12~16m, boom length 54m, boom angle 75°

幅度 Radius (m)	副臂长度 Jib length (m)										幅度 Radius (m)	
	24	30	36	42	48	54	60	66	72	78		84
30	188											30
32	174	173										32
34	162	161	137									34
36	151	150	137	109								36
38	145	141	137	109								38
40	123	139	132	109	90							40
42		124	128	109	90	74						42
44		110	116	109	90	74	62					44
46		95	105	109	90	74	62	51				46
48			95	100	90	74	62	51				48
50			85	92	90	74	62	51	45			50
52			75	84	87	74	62	51	45	37		52
54				77	81	71	62	51	45	37	32	54
56				70	75	67	62	51	45	37	32	56
58					69	63	62	51	45	37	32	58
60					64	60	62	51	45	37	32	60
64						58	59	51	45	37	32	64
68						49	52	51	45	37	32	68
72							45	48	45	37	32	72
76								42	43	37	32	76
80									34	38	36	80
84										31	32	84
88											29	88
92											25	92
96												96

典型工况起重性能表
Lifting capacity table in typical working conditions

转台平衡重 120t 车身配重0t 超起平衡重 0~270t

超起桅杆半径13m 超起配重半径 12~16m 主臂长度72m 主臂角度75°

Turntable counterweight 120t, car-body counterweight 0t, superlift counterweight 0~270t

Superlift mast radius 13m, superlift counterweight radius 12~16m, boom length 72m, boom angle 75°

幅度 Radius (m)	副臂长度 Jib length (m)											幅度 Radius (m)
	24	30	36	42	48	54	60	66	72	78	84	
34	156											34
36	146	141										36
38	137	136	114									38
40	129	128	114									40
42	121	121	114	95								42
44	115	114	114	95	78							44
46		108	108	95	78	65						46
48		103	102	95	78	65						48
50		102	98	95	78	65	56					50
52			93	92	78	65	56	47				52
54			84	86	78	65	56	47	40			54
56			75	80	78	65	56	47	40	33		56
58				73	74	65	56	47	40	33		58
60				66	69	65	56	47	40	33	29	60
64					58	60	56	47	40	33	29	64
68					48	52	52	47	40	33	29	68
72						43	46	46	40	33	29	72
76							39	41	40	33	29	76
80								35	36	33	29	80
84									30	32	29	84
88										28	29	88
92											25	92
96												96
100												100

转台平衡重 120t 车身配重0t 超起平衡重 0~270t

超起桅杆半径13m 超起配重半径 12~16m 主臂长度84m 主臂角度75°

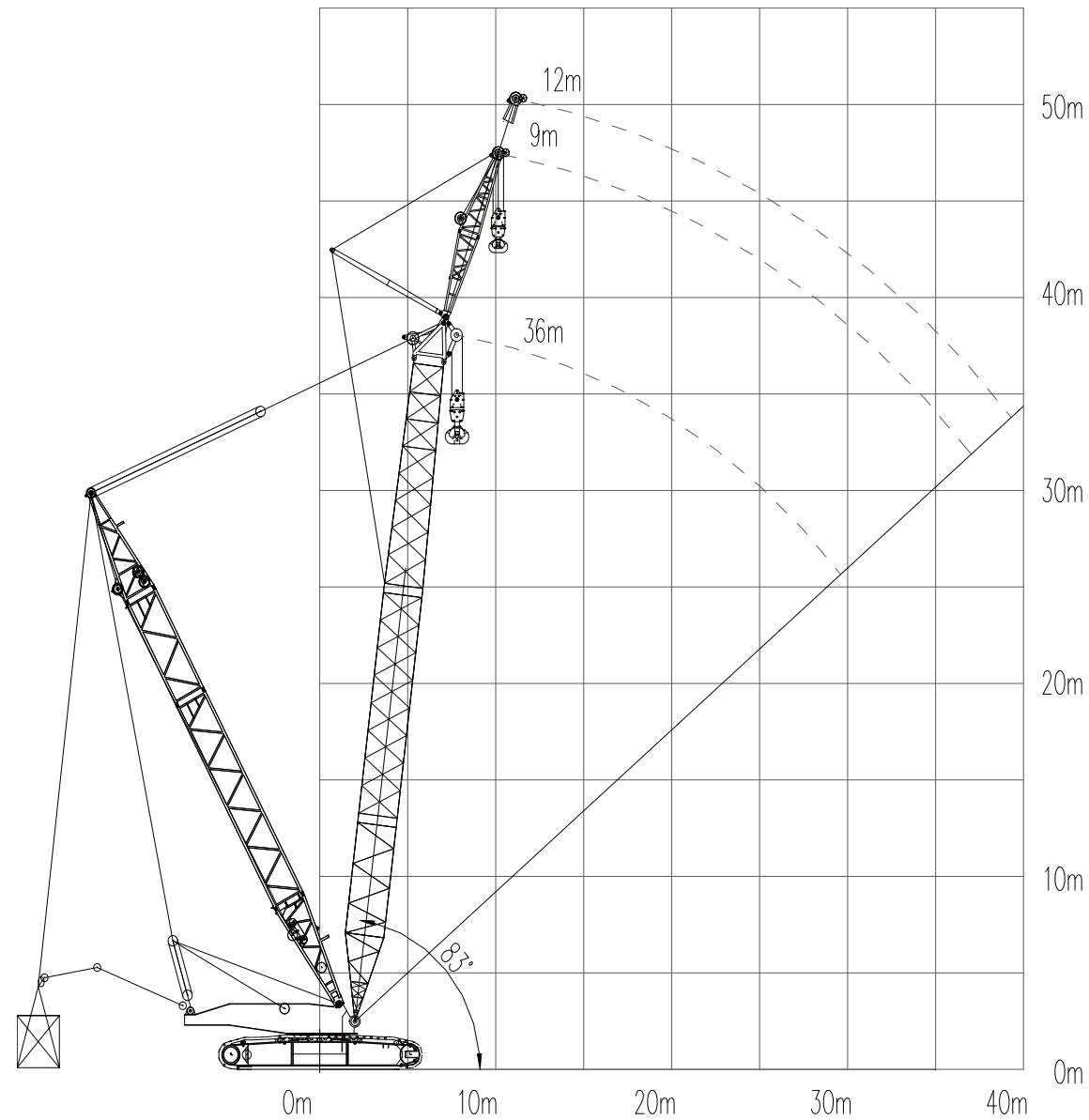
Turntable counterweight 120t, car-body counterweight 0t, superlift counterweight 0~270t

Superlift mast radius 13m, superlift counterweight radius 12~16m, boom length 84m, boom angle 75°

幅度 Radius (m)	副臂长度 Jib length (m)											幅度 Radius (m)
	24	30	36	42	48	54	60	66	72	78	84	
38	133											38
40	125	112										40
42	118	112	94									42
44	112	111	94	78								44
46	106	105	94	78								46
48	100	100	94	78	67							48
50		93	91	78	67	57						50
52		85	85	78	67	57	48					52
54		85	79	78	67	57	48	41				54
56			73	73	67	57	48	41				56
58			67	68	67	57	48	41	36			58
60				64	63	57	48	41	36	30		60
64				54	55	55	48	41	36	30	26	64
68					47	49	48	41	36	30	26	68
72						42	43	41	36	30	26	72
76							36	38	38	36	30	76
80								32	33	33	30	80
84									29	30	29	84
88										25	26	88
92											23	92
96												96
100												100
104												104

典型工况起重性能表
Lifting capacity table in typical working conditions

超起工况盾构副臂SHF
TBM jib superlift working condition SHF



主臂长度36m 副臂长度9m主副臂夹角10°
转台配重160t 车身配重40t 超起配重0~190t
超起桅杆半径13m 超起配重半径12~16m
Boom length 36m, jib length 9m, jib offset angle 10°,
Turntable counterweight 160t, car-body counterweight 40t, superlift counterweight 0~190t
Superlift mast radius 13m, superlift counterweight radius 12~16m

主钩半径 Main hook radius	主臂角度 Boom angle	主钩载荷 Main hook load	副钩半径 Aux. hook radius	副钩载荷 Aux. hook load	联合吊载 Combined lifting
8	82.63	500*	10.4	260	400
9	81.02	500*	11.6	260	393
10	79.39	500	12.9	260	385
11	77.76	490	14.2	260	377
12	76.11	456	15.4	260	369
13	74.45	420	16.7	260	362
14	72.77	383	18	255	338
15	71.07	352	19.2	251	311
16	69.36	325	20.5	242	288
17	67.62	301	21.7	230	267
18	65.86	280	23	213	247
19	64.07	261	24.3	198	230
20	62.25	243	25.5	185	215
22	58.51	212	28	162	189
24	54.59	187	30.5	144	167
26	50.46	166	33	128	149
28	46.04	148	35.5	114	134
30	41.23	132	38	102	120

典型工况起重性能表
Lifting capacity table in typical working conditions

主臂长度36m 副臂长度12m主副臂夹角10°
转台配重160t 车身配重40t 超起配重0~190t
超起桅杆半径13m 超起配重半径12~16m
Boom length 36m, jib length 12m, jib offset angle 10°,
Turntable counterweight 160t, car-body counterweight 40t, superlift counterweight 0~190t
Superlift mast radius 13m, superlift counterweight radius 12~16m

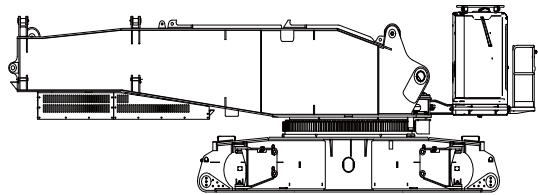
主钩半径 Main hook radius	主臂角度 Boom angle	主钩载荷 Main hook load	副钩半径 Aux. hook radius	副钩载荷 Aux. hook load	联合吊载 Combined lifting
8	82.63	500*	11.3	230	365
9	81.02	490*	12.6	230	355
10	79.39	485	14	230	346
11	77.76	486	15.3	230	338
12	76.11	434	16.6	226	330
13	74.45	405	18	214	323
14	72.77	369	19.3	203	316
15	71.07	338	20.7	193	296
16	69.36	311	22	184	274
17	67.62	288	23.3	176	254
18	65.86	267	24.7	169	236
19	64.07	248	26	162	219
20	62.25	231	27.3	156	205
22	58.51	201	30	145	180
24	54.59	176	32.7	133	160
26	50.46	155	35.3	118	142
28	46.04	136	37.9	106	128
30	41.23	125	40.6	95	115

50

XGC500-I履带起重机 XGC500-I CRAWLER CRANE

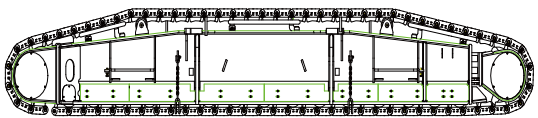
- 运输明细表及运输方案
Transport list and transport plan
- 安全保护措施
Safety Protection Devices
- 配套件明细表
Main Parts List
- 主要技术参数
XGC11000 Crawler Crane Main Technical Specifications
- 典型工况载荷表
Load charts of typical working conditions

运输明细表及运输方案
Transport list and transport plan

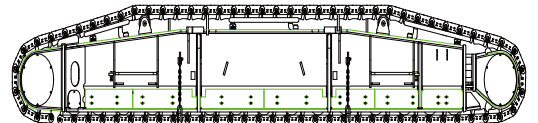


主机 Basic machine	×1
长度(L)/m	11.5
宽度(W)/m	3.45
高度(H)/m	3.45
重量(W)/t	55

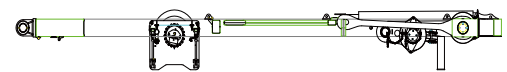
含转台、车架（含四件支脚盘）、操纵室等。
Include turntable and car-body (with 4 outrigger pads), cab and etc.



左履带梁 Left track frame	×1
长度(L)/m	11.1
宽度(W)/m	1.62
高度(H)/m	1.54
重量(W)/t	35

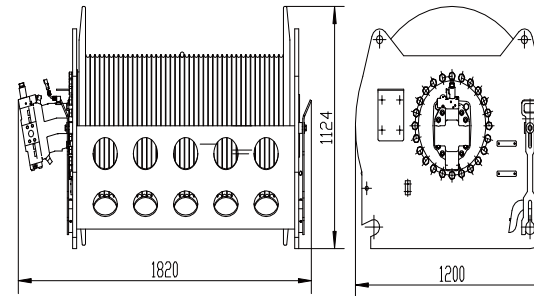


右履带梁 Right track frame	×1
长度(L)/m	11.1
宽度(W)/m	1.62
高度(H)/m	1.54
重量(W)/t	35



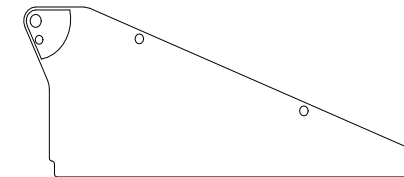
桅杆组件 Mast assy	×1
长度(L)/m	11.14
宽度(W)/m	2.21
高度(H)/m	1.25
重量(W)/t	9.8

含桅杆、主变幅滑轮组、主变幅机构及钢丝绳。
Include mast, main luffing pulley block, main luffing winch and wire rope.

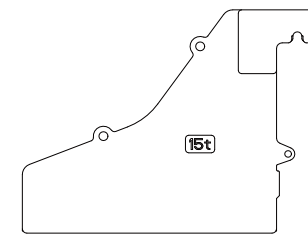


起升机构 Hoist winch	×2
长度(L)/m	1.82
宽度(W)/m	1.2
高度(H)/m	1.13
重量(W)/t	5.1

含起升钢丝绳。
Include hoist rope.

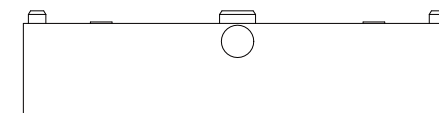


车身平衡重箱 Car-body counterweight box	×2
长度(L)/m	2.35
宽度(W)/m	1.4
高度(H)/m	0.85
重量(W)/t	11.2



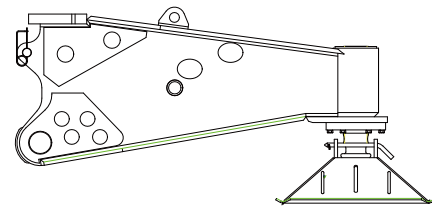
转台平衡重框 Turntable counterweight frame	×2
长度(L)/m	2.54
宽度(W)/m	2.52
高度(H)/m	2.05
重量(W)/t	10

含平衡重块锁紧链条组件。
Include counterweight locking chain assy.



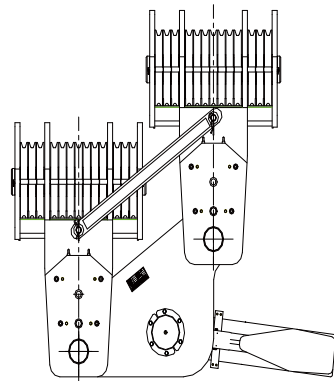
平衡重块 Counterweight slab	×34
长度(L)/m	2.38
宽度(W)/m	2.10
高度(H)/m	0.58
重量(W)/t	10

运输明细表及运输方案
Transport list and transport plan

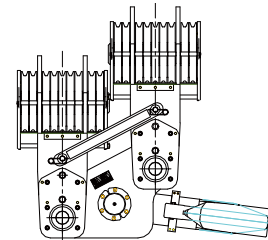


起升机构 Hoist winch	×2
长度(L)/m	2.53
宽度(W)/m	0.98
高度(H)/m	1.20
重量(W)/t	2.49

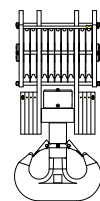
含支脚盘。
Include outrigger pads.



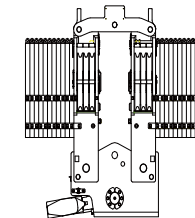
500吨吊钩 500t capacity hook block	×1
长度(L)/m	1.64
宽度(W)/m	0.91
高度(H)/m	3.14
重量(W)/t	7.4



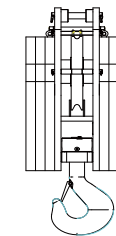
400吨吊钩 400t capacity hook block	×1
长度(L)/m	1.64
宽度(W)/m	0.91
高度(H)/m	3.14
重量(W)/t	6.1



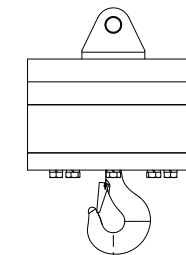
260吨吊钩 260t capacity hook block	×1
长度(L)/m	1.02
宽度(W)/m	0.87
高度(H)/m	2.34
重量(W)/t	4.6



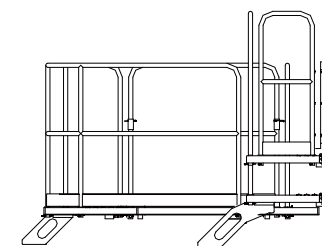
200吨吊钩 200t capacity hook block	×1
长度(L)/m	2.5
宽度(W)/m	1.0
高度(H)/m	2.3
重量(W)/t	9.0



50吨吊钩 50t capacity hook block	×1
长度(L)/m	0.64
宽度(W)/m	0.76
高度(H)/m	1.84
重量(W)/t	2.8



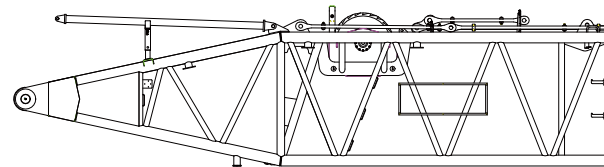
16吨吊钩 16t capacity hook block	×1
长度(L)/m	0.60
宽度(W)/m	0.60
高度(H)/m	0.87
重量(W)/t	0.9



走台板 Catwalk	×1
长度(L)/m	—
宽度(W)/m	—
高度(H)/m	—
重量(W)/t	0.48

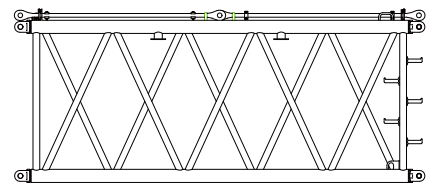
拆解运输
Transport after disassembly

运输明细表及运输方案
Transport list and transport plan



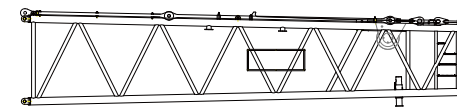
主臂底节臂总成 Boom butt assy	×1
长度(L)/m	10.82
宽度(W)/m	3
高度(H)/m	3
重量(W)/t	14.1

含主臂防后倾油缸, 变幅卷扬及钢丝绳, 随臂拉板等
Include boom backstop cylinder, luffing winch and rope, some pendant



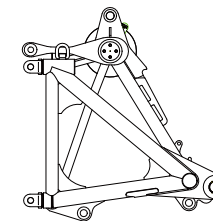
主臂6米重型节总成 6m heavy boom insert	×2
长度(L)/m	6.2
宽度(W)/m	3
高度(H)/m	2.58
重量(W)/t	3.5

含拉板
Include pendant



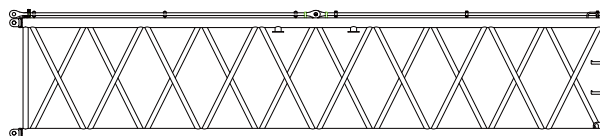
主臂12米过渡节总成 12m boom transition section insert	×1
长度(L)/m	12.18
宽度(W)/m	3
高度(H)/m	2.55
重量(W)/t	7.2

含拉板
Include pendant



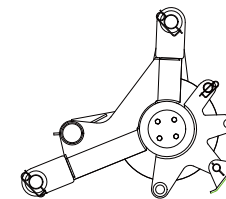
主臂臂头 Boom head	×1
长度(L)/m	2.57
宽度(W)/m	2.59
高度(H)/m	2.72
重量(W)/t	4.6

含拉板
Include pendant

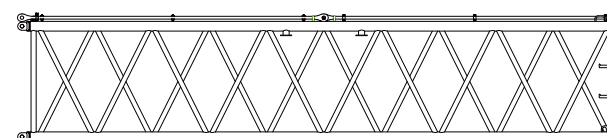


主臂12米加强节总成 12m boom insert (strengthened)	×1
长度(L)/m	12.18
宽度(W)/m	3
高度(H)/m	2.58
重量(W)/t	6.1

含拉板
Include pendant

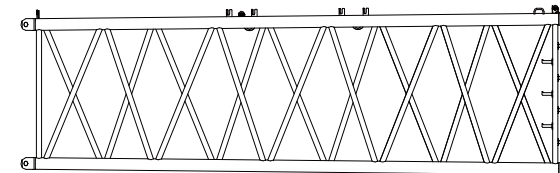


主臂滑轮组 Boom sheave block	×1
长度(L)/m	1.39
宽度(W)/m	1.67
高度(H)/m	1.2
重量(W)/t	1.8



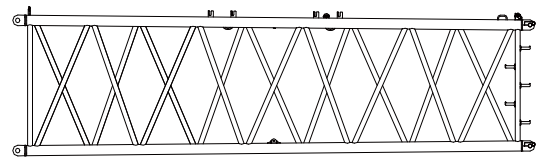
主臂12米重型节总成 12m heavy boom insert	×1
长度(L)/m	12.18
宽度(W)/m	3
高度(H)/m	2.58
重量(W)/t	5.8

含拉板
Include pendant



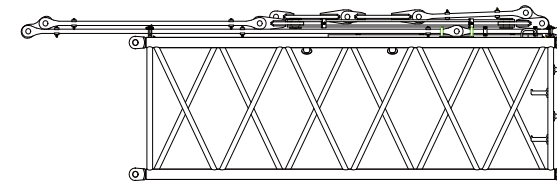
主臂12米大截面重型下过渡节总成 12m boom transition section (large-cross section)	×1
长度(L)/m	12.23
宽度(W)/m	3.72
高度(H)/m	3.22
重量(W)/t	7.4

运输明细表及运输方案
Transport list and transport plan



主臂12米大截面重型上过渡节总成 ×1
12m upper boom transition section (large-cross section) ×1

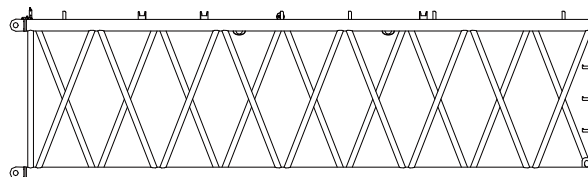
长度(L)/m	12.23
宽度(W)/m	3.72
高度(H)/m	3.22
重量(W)/t	7.1



塔臂6米节A ×1
6m tower jib insert A ×1

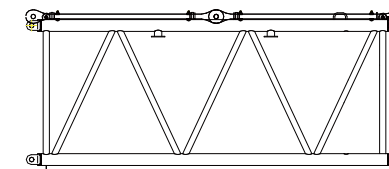
长度(L)/m	7.68
宽度(W)/m	2.44
高度(H)/m	2.25
重量(W)/t	3.55

含拉板平衡梁
Include pendant balance beam



主臂大截面12m重型臂节总成 ×1
12m heavy boom insert (large-cross section) ×1

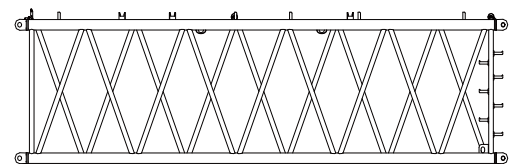
长度(L)/m	12.23
宽度(W)/m	3.72
高度(H)/m	3.22
重量(W)/t	8.5



塔臂6米节B ×2
6m tower jib insert B ×2

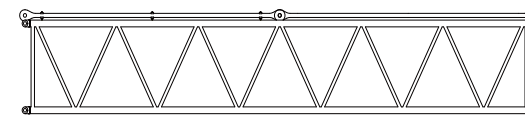
长度(L)/m	6.16
宽度(W)/m	2.44
高度(H)/m	2.01
重量(W)/t	2.75

含拉板
Include pendant



主臂大截面12m轻型臂节总成 ×1
12m light boom insert (large-cross section) ×1

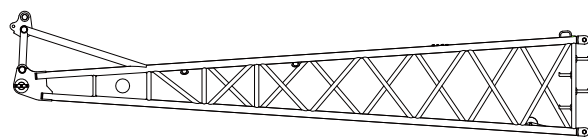
长度(L)/m	12.23
宽度(W)/m	3.72
高度(H)/m	3.22
重量(W)/t	7.5



塔臂12米节A ×1
12m tower jib insert A ×1

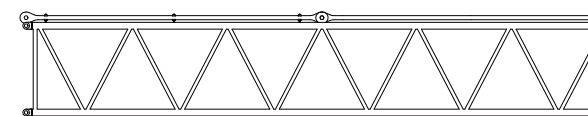
长度(L)/m	12.16
宽度(W)/m	2.44
高度(H)/m	2.01
重量(W)/t	3.53

含拉板
Include pendant



塔臂底节臂总成 ×1
Tower jib butt ×1

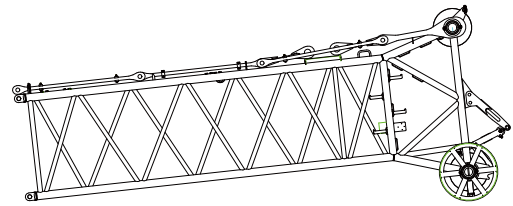
长度(L)/m	10.81
宽度(W)/m	2.53
高度(H)/m	2.31
重量(W)/t	4.5



塔臂12米节B ×3
12m tower jib insert B ×3

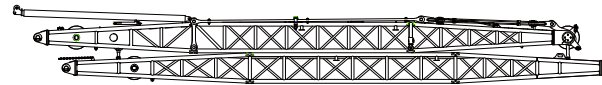
长度(L)/m	12.16
宽度(W)/m	2.44
高度(H)/m	2.01
重量(W)/t	3.37

含拉板
Include pendant



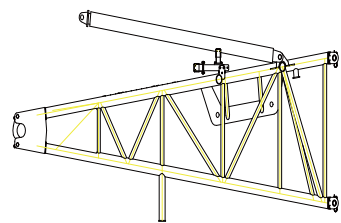
塔臂顶节臂 Tower jib top	×1
长度(L)/m	8.51
宽度(W)/m	2.44
高度(H)/m	3.35
重量(W)/t	4.86

含拉板
Include pendant



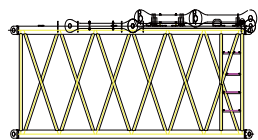
塔臂前后支架 Tower jib front/rear struts	×1
长度(L)/m	16.25
宽度(W)/m	2.61
高度(H)/m	2.06
重量(W)/t	9.73

含拉板
Include pendant



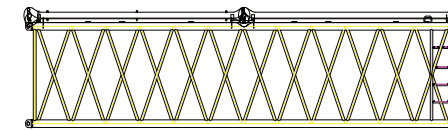
超起桅杆底节臂 Superlift mast butt	×1
长度(L)/m	6.236
宽度(W)/m	2.9
高度(H)/m	2.27
重量(W)/t	7.56

含超起变幅机构及钢丝绳、超起左右防后倾油缸总成
Include superlift luffing gear and wire rope, superlift left/right backstop cylinders



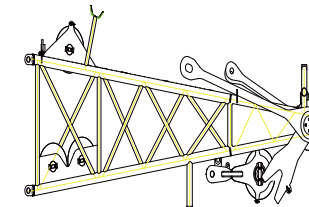
超起桅杆6米节 6m superlift mast insert	×1
长度(L)/m	6.26
宽度(W)/m	2.9
高度(H)/m	2.035
重量(W)/t	2.1

含拉板
Include pendant



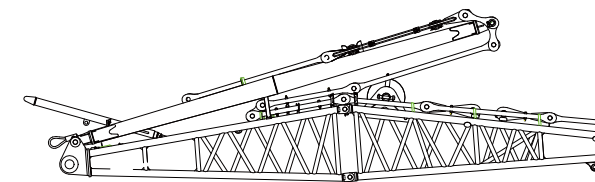
超起桅杆12米节 12m superlift mast insert	×1
长度(L)/m	12.23
宽度(W)/m	2.9
高度(H)/m	2.035
重量(W)/t	4.2

含拉板
Include pendant



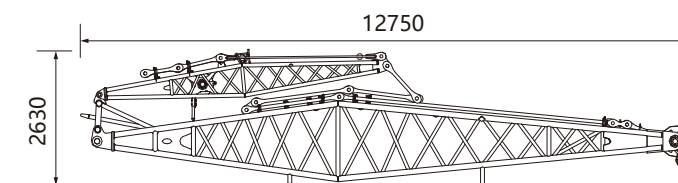
超起桅杆顶节臂 Superlift mast top	×1
长度(L)/m	6.435
宽度(W)/m	2.9
高度(H)/m	2.68
重量(W)/t	4.82

含拉板及滑轮组
Include pendant and pulley block



副臂顶节臂 Jib top	×1
长度(L)/m	10.12
宽度(W)/m	3
高度(H)/m	2.78
重量(W)/t	5.36

含副臂顶底节、支架、前后拉板、防后倾杆等。
Include jib top, strut, front/rear pendants, backstop rod and etc., optional configuration



风电副臂 Wind power jib	×1
长(L)	12750mm
宽(W)	2540mm
高(H)	2630mm
重量(W)	4.5t

整机(全部件)重量约为725吨,未列入部分包括一些卡子、部分小尺寸销轴、部分螺栓、个别小拉板或索具接头等,总重不超过3t。
由于产品的制造过程中难免有细微差别,加之产品的不断改进,部分零部件规格及重量上会有些许不同,望用户理解。
The whole vehicle (all the parts) weighs approx. 725t. The parts weight which are not listed above include some clips, small size pin shafts, bolts, several small pendants or sling connectors, and etc., total weight is not more than 3t.
Slight difference is ineluctable during product manufacture, and dimension and weight of some parts are variable due to continuous improvement in products.

随机工具
Supplied Tools

随机备件
Supplied spare parts

序号 No.	代号 Code	名称 Name	数量 Qty.	备注 Remark
1	819942294	S-DX25-1 3/4 卸扣 Shackle	2	
2	819954753	工具箱 (徐州宏健) Tool kit (Xuzhou Hongjian)	1	
3	175002540	WBW10-25000 压制钢丝绳 Compressed wire rope	1	
4	859932653	S-BW12-1 1/4 卸扣 Shackle	4	
5	170101720	QUY50.98.2 钢丝绳存放周转箱 Wire rope storage box	1	
6	801500806	CQJ-16 充气工具 Inflation tool	1	
7	175002541	WBW10-58000 压制钢丝绳 Compressed wire rope	1	
8	859981804	压制钢丝绳 ZS0202φ40×13.6M Compressed wire rope	2	
9	176700618	动力小车总成 Power trolley	1	
10	819900607	资料配送拉杆包 Lever type information bag	1	
11	819900454	AK-120 急救包国产 First-aid kit Domestic	1	
12	819948519	ORC-III 铝合金人字梯 Aluminum alloy ladder	1	
13	819910776	T-DX2-3/8 卸扣 Shackle	4	
14	801970835	干粉灭火器-6Kg Dry powder fire extinguisher -6Kg	1	
15	803743517	主起升卷扬钢丝绳配套用应力释放器 Stress releaser for main hoist rope	2	

序号 No.	代号 Code	名称 Name	数量 Qty.	备注 Remark
1	175000295	XGC500K.90.2-13 销轴 pin shaft	1	
2	174002875	XGC400K.99.1 O型圈密封包 O-ring seal bag	1	
3	803603008	HFV4/024-1Z-1-S-G-D1 继电器 Relay	5	
4	174002876	XGC400K.99.2 ED密封包 ED seal bag	1	
5	174002877	XGC400K.99.3 法兰密封包 Flange seal bag	1	
6	803079383	YLXA-152 新乡东风回油滤油器滤芯 Oil return filter element (Xinxiang Dongfeng)	2	
7	803678226	W2P (Deutsch) 二芯插头锁片 2-core plug locking plate	10	
8	803678227	W2S (Deutsch) 二芯插座锁片 2-core socket locking plate	10	
9	800141040	油水分离器滤芯奔驰OM460LA.E3A/1 Oil-water separator element Benz	1	
10	800141041	燃油滤芯奔驰OM460LA.E3A/1 Fuel filter element Benz	1	
11	800141042	机油滤芯奔驰OM460LA.E3A/1 Engine oil filter element Benz	2	
12	803678214	DT04-2P (Deutsch) 二芯插头 2-core plug	10	
13	803400188	41390-4 手压式充脂器 Hand pressed grease filling device	1	
14	803678215	DT06-2S (Deutsch) 二芯插座 2-core socket	10	
15	803161819	QXF-5 充气单向阀 Inflation check valve	2	
16	803161924	JX-800×80 吸油滤芯 Oil suction filter element	2	
17	803700641	30A MIDI FUSE	1	
18	803678218	DT04-4P 四芯插头 4-core plug	5	
19	803700642	40A MIDI FUSE	1	
20	803678219	DT06-4S 四芯插座 4-core socket	5	

随机备件
Supplied spare parts

装箱单
Packing list

序号 No.	代号 Code	名称 Name	数量 Qty.	备注 Remark
21	803700643	MIDI FUSE 50A	1	
22	800104060	C 27 1050 空气滤清器主滤芯 Main element for air filter	1	
23	803678230	W4P 四芯插头锁片 4-core plug locking plate	5	
24	803280017	803280017 OR61.6×2.62O型密封圈 O seal ring	1	
25	803678231	W4S 四芯插座锁片 4-core socket locking plate	5	
26	803689941	1616-21-10A 断路器 10A Fuse	5	
27	803689693	1616-21-20A 断路器 20A Fuse	5	
28	803689942	1616-21-15A 断路器 15A Fuse	5	
29	803689943	1616-21-25A 断路器 25A Fuse	5	
30	170000003	卡子5-50 Clip	2	
31	170000004	卡子6-70 Clip	8	
32	803678238	1060-16-0122 (Deutsch,13A,0.75-2mm2) 公插针 Male pin	40	
33	803678239	1062-16-0122 (Deutsch,13A,0.75-2mm2) 母插针 Female pin	40	
34	803600449	H1.5/14 管状预绝缘端子 Tubular pre-insulated terminals	50	

序号 No.	名称 Name	数量 Qty.	包装 Packing	备注 Remark
1	XGC500-I履带起重机 XGC500-I crawler crane	1	裸装 Nude packing	燃油箱注油20L Refill 20L fuel to the tank
2	XGC500-I产品合格证 XGC500-I Crawler Crane Product Certificate	1		
3	XGC500-I履带起重机操作手册 XGC500-I Crawler Crane Operation Manual	1		包括载荷表部分 Include load charts
4	XGC500-I履带起重机零部件图册 XGC500-I Crawler Crane Parts Catalogue	1		
5	XGC500-I履带起重机维修手册 XGC500-I Crawler Crane Maintenance Manual	1		
6	发动机说明书 Engine Operation Instructions	1		
7	XGC500-I起重能力矩限制器使用说明书 XGC500-I LMI Operation Instructions	1		
8	空调器使用说明书 Air Conditioner Operation Instructions	1		
9	随机工具清单 Supplied tools list	1		
10	随机工具 Supplied tools	1		
11	随机备件清单 Supplied spare parts list	1		
12	随机备件 Supplied spare parts	1		