

# SC360.8

Total Weight: 36T

Rated power: 212kw/2000rpm

Bucket capacity: 1.6-1.8m<sup>3</sup>

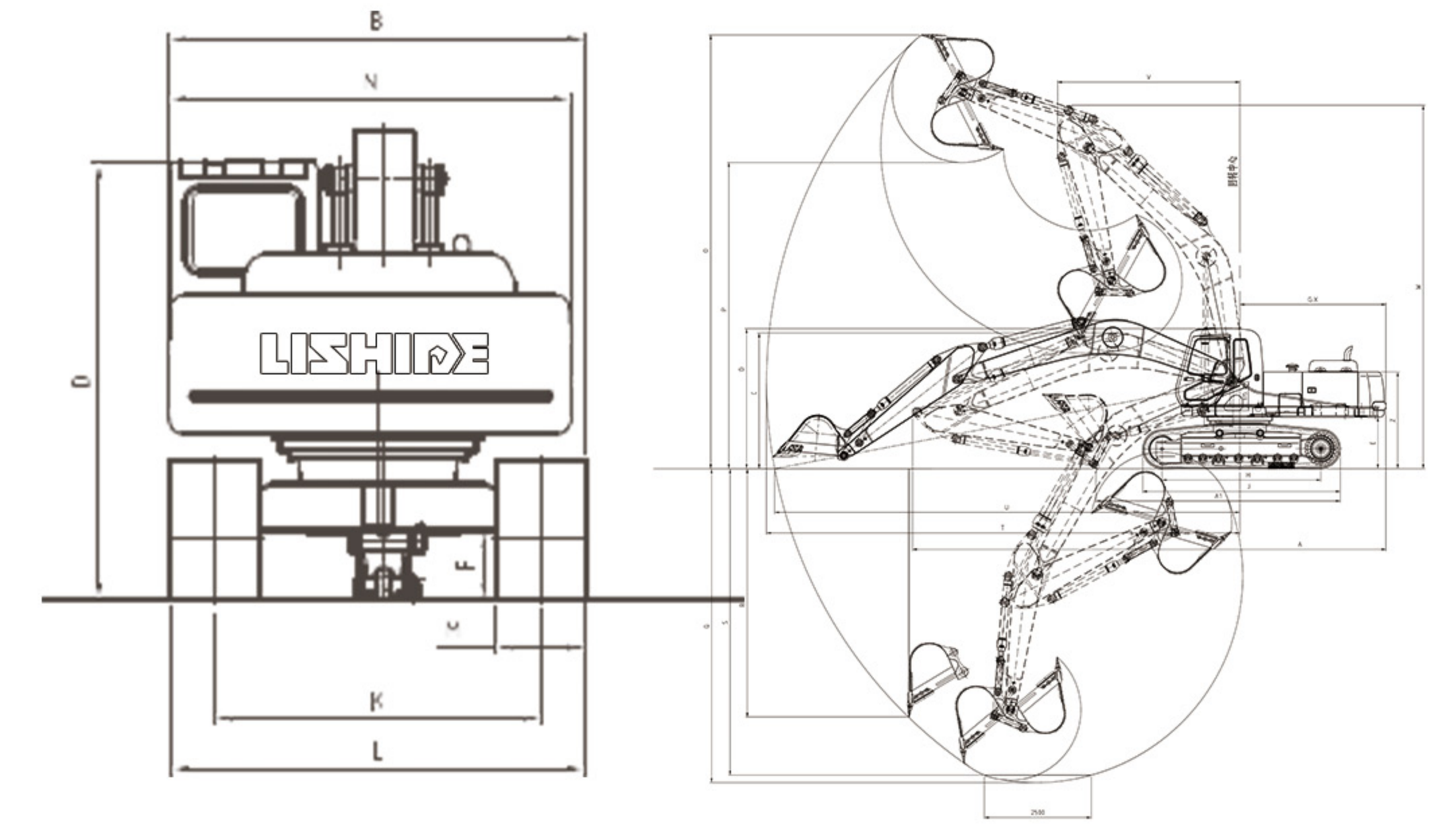


## Parameters

Specification	规格	SC360.8
Total Weight(T)	整机重量 (T)	36
Bucket capacity(M <sup>3</sup> )	铲斗容量 (M <sup>3</sup> )	1.6-1.8
Engine model	发动机型号	ISUZU 6HK1X
Rated power(Kw/r/min)	额定功率(Kw/r/min)	212/2000
fuel tank volume(L)	燃油箱容积(L)	650
walking speed(km/h)	行走速度(km/h)	6.2/4
Swing speed(r/min)	回转速度(r/min)	8.2
Climbing ability	爬坡能力(°)	35
Bucket digging force(KN)	铲斗挖掘力(KN)	245
Arm digging force(KN)	斗杆挖掘力(KN)	185
Ground pressure(KPa)	接地比压(KPa)	70.8
Traction(KN)	牵引力(KN)	247.8
Hydraulic pump model	液压泵型号	K5V160DT AP4VO180
Max flow rate(L/min)	最大流量 (L/min)	270*2+30 310*2
Work pressure(MPa)	工作压力(MPa)	37
Hydraulic tank volume(L)	液油箱容积(L)	310

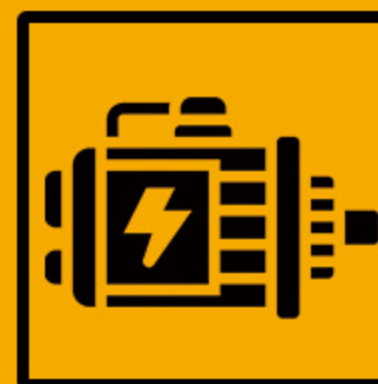
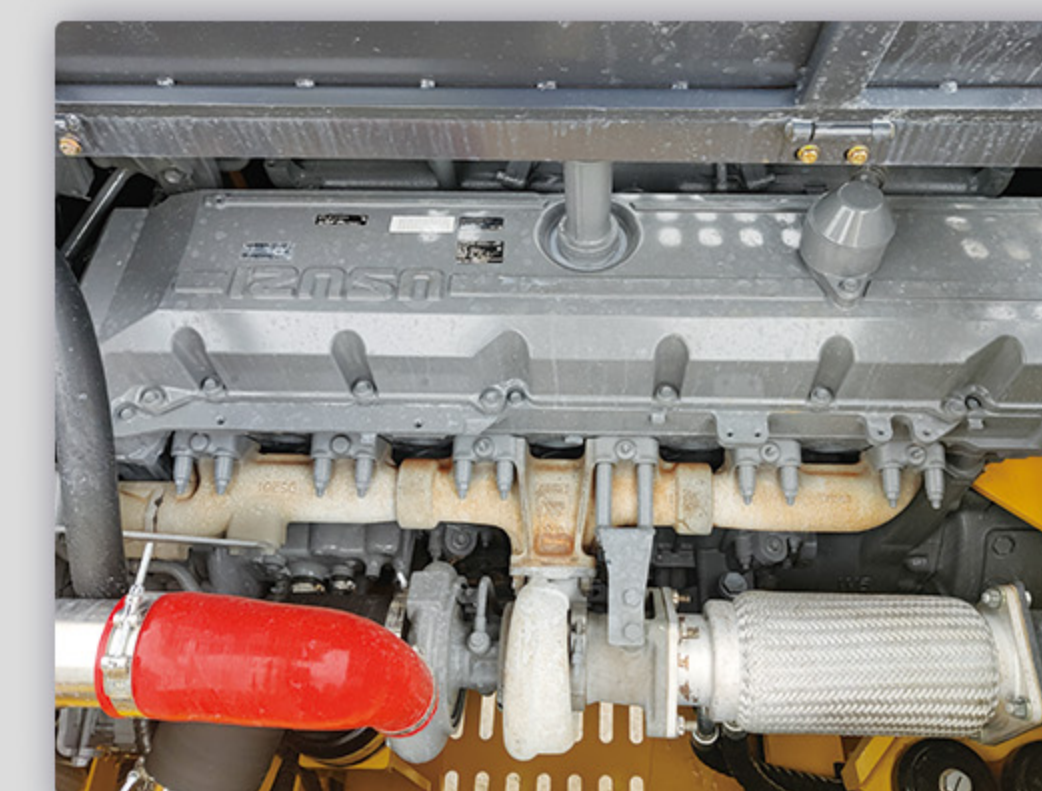
Scope of work(mm)	作业范围(mm)	SC360.8
O - Maximum excavation height	O-最大挖掘高度	10200
P-Maximum unloading height	P-最大卸载高度	7135
Q-Maximum digging depth	Q-最大挖掘深度	7370
R-Maximum vertical digging depth	R-最大垂直挖掘深度	6380
S - Maximum digging depth when digging out 2.5m level	S-挖出2.5m水平面时的最大挖掘深度	7190
T-Maximum digging distance	T-最大挖掘距离	11100
U - Maximum excavation distance on the ground	U-在地平面的最大挖掘距离	10910
V - Minimum turning radius	V-最小回转半径	4265
W - Maximum height at minimum turning radius	W-最小回转半径时最大高度	8500

Overall size(mm)	整机尺寸(mm)	SC360.8
A-Total length	A-总长	11187
B-Overall width	B-总宽	3190
C-Total height(boom top)	C-总高(至动臂顶部)	3180
D-Overall height (top of cab)	D-总高(驾驶室顶)	3165
E-counterweight ground clearance	E-配重离地间隙	1190
F - Minimum ground clearance	F-最小离地间隙	498
G-Tail turning radiu	G-尾部回转半径	3525
H - Track grounding length	H-履带接地长度	4030
J-Track length	J-履带长度	4945
K-Rail guage	K-轨距	2590
L-Track width	L-履带宽度	3190
M-track shoe width	M-履带板宽度	600
N-Turntable width	N-转台宽度	2995
X -Distance from the center of rotation to the rear end	X-回转中心至后端的距离	3525
Y-Track tooth thickness	Y-履带齿厚度	30
Z-Counterweight heigh	Z-配重高度	2627
A1- Grounding length (during transportation)	A1-接地长度(运输时)	5875
Arm length	斗杆长度	3185
Boom length	动臂长度	6470

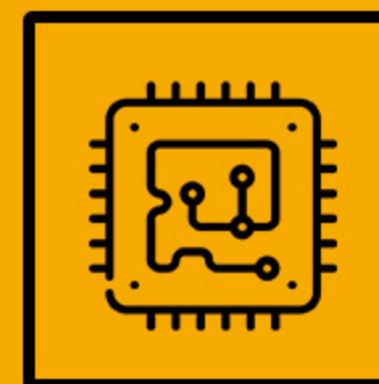


Note: LISHIDE products are constantly upgraded and updated, and product technical parameters, configuration and other information may be modified and adjusted at any time. If there is any modification, we will not notify you; therefore, this information is for reference only. Please refer to the product configuration, appearance, technical parameters, etc. The actual product shall prevail.

## partial configuration



SC360.8 adopts advanced technology and design, can be equipped with high-performance ISUZU engine, and is matched with a well-known brand hydraulic system to ensure strong power output and stable operating performance. Its low fuel consumption not only reduces operating costs, but also reduces the impact on the environment, in line with the development concept of green and environmental protection.



Adopting the world's most advanced electronic power optimization system, multiple operating modes can meet users' fuel-saving requirements to the greatest extent, and intelligent language switching can solve the language problems of customers from different countries.



It adopts engine direct-drive integrated radiator, large-diameter hydraulic main valve, small system pressure loss, large-torque swing motor, and fast swing start speed. This enables it to maintain efficient and stable operating conditions in harsh working environments, and can quickly complete large-scale mining and earthworks, greatly improving production efficiency.



The structural parts have been strengthened through finite element analysis, and the load-bearing capacity is 30% higher than that of models of the same tonnage in the industry. The SC360.8 is equipped with a standard rock bucket of 1.6m<sup>3</sup>, and optional 1.6m<sup>3</sup> and 1.8m<sup>3</sup> double arc buckets. According to customer needs, 15-meter, 18-meter, and 22-meter extension arms can be selected, and attachments such as breakers can be installed to meet the needs of various operating conditions.

Mini excavator  
微型挖掘机

Small excavator  
小型挖掘机

Medium excavator  
中型挖掘机

Large excavator  
大型挖掘机

Mining excavator  
矿山挖掘机